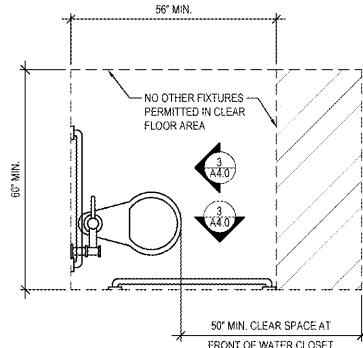
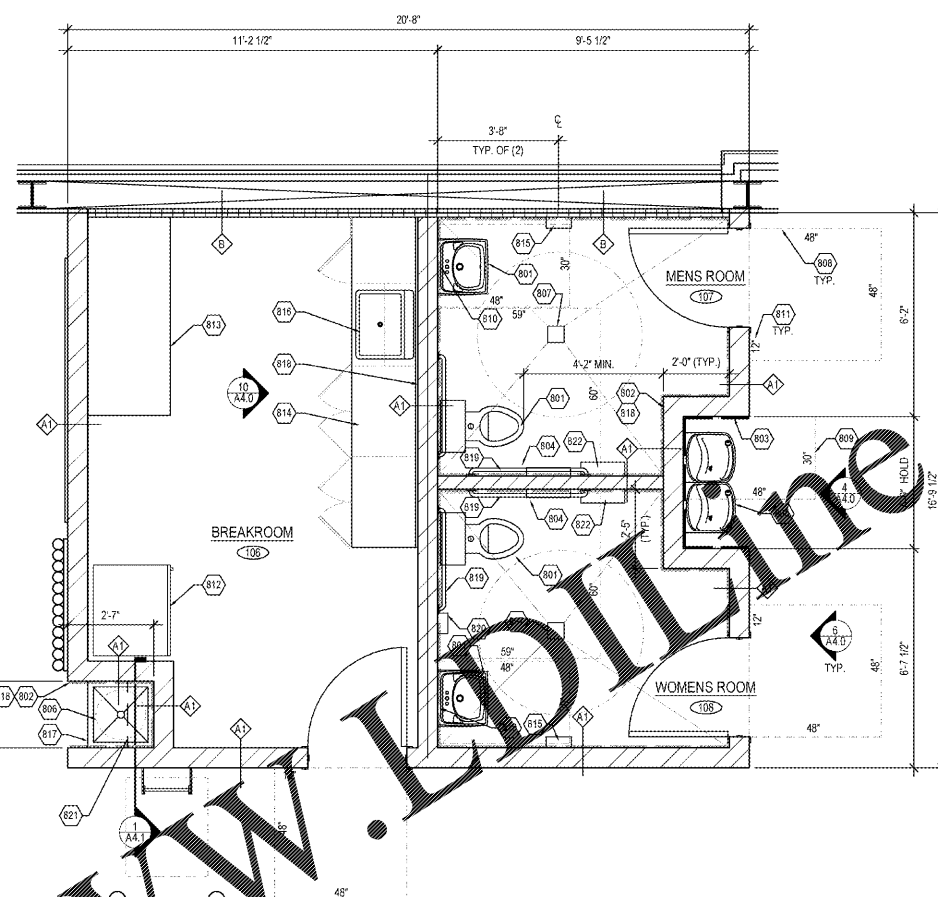


3 ACCESSIBLE WATER CLOSET ELEVATIONS
A4.0 SCALE: 1/2" = 1'-0"



2 ACCESSIBLE TOILET
A4.0 SCALE: 1/2" = 1'-0"



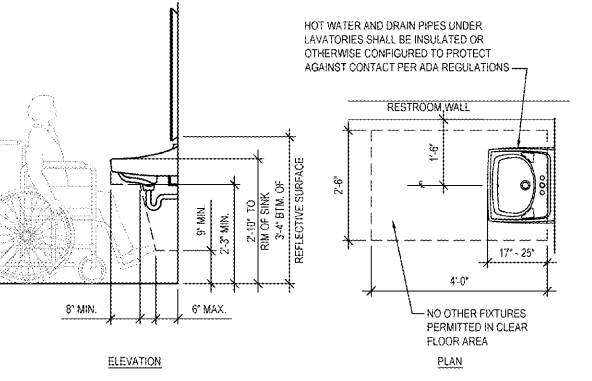
ENLARGED RESTROOM / BREAK ROOM PLAN
A4.0 SCALE: 3/8" = 1'-0"

GENERAL NOTES

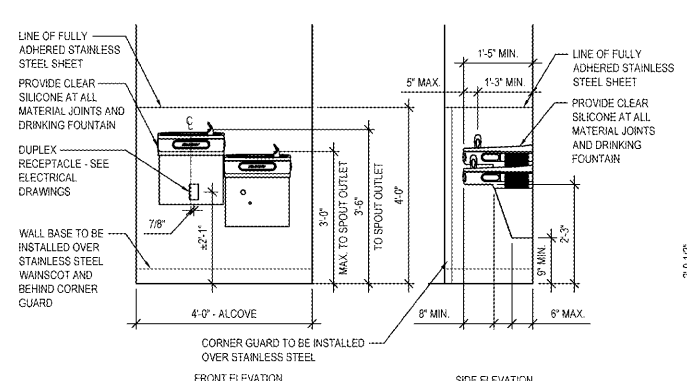
- SEE TYPICAL RESTROOM DETAILS THIS SHEET FOR ADDITIONAL INFORMATION.
- SEE A1.1, & 4.1 FOR KEY NOTE REFERENCES. WALL TYPE REFERENCES. AND ADDITIONAL INFORMATION.
- SEE PLUMBING SHEET FOR FIXTURE TYPES.
- FURNISH ALL HARDWARE AS REQUIRED. PROVIDE ADJUSTABLE SHELVES AND REQUIRED HARDWARE WHERE SHOWN. (NO VISIBLE HARDWARE)
- SEE ELECTRICAL & PLUMBING DRAWINGS FOR ADDITIONAL INFORMATION.

800 SERIES KEY NOTES

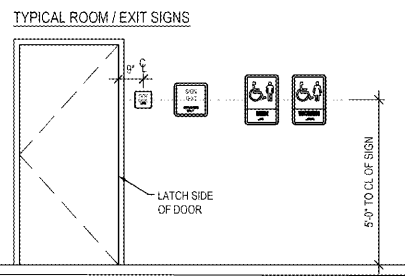
- RESTROOM FIXTURES. SEE DETAILS 2, 3 & 5 / A4.0 AND PLUMBING DRAWINGS FOR ADDITIONAL INFORMATION.
- DOTTED LINE INDICATES PROVIDE AND INSTALL WC-1 ON WALL AS SHOWN. SEE FINISH SCHEDULE A1.1 FOR ADDITIONAL INFO.
- GREEN BOARD AND 20 GA. STAINLESS STEEL SHEET TO EXTEND FROM FLOOR TO 4'-0" AFF. ALL DRINKING FOUNTAIN WALLS. SEE DETAIL A1A.0 FOR FINISH INFORMATION.
- TOILET PAPER DISPENSER BOBBICK MODEL #B-270.
- DRINKING FOUNTAIN REFER TO PLUMBING DRAWINGS FOR ADDITIONAL INFORMATION.
- WATER HEATER / WATER ABOVE CUP SINK ON SHELF. SHELF TO BE MOUNTED AT 4'-0" AFF. REFER TO PLUMBING DRAWINGS FOR MORE DETAILS.
- FLOOR FINISH. REFER TO PLUMBING DRAWINGS FOR MORE DETAILS. SLOPE FOR TO SLOPE FLOOR TOWARDS DRAIN. (SLOPE NOT TO EXCEED 2%).
- CLEAR LINE INDICATES MIN. CLEAR FLOOR SPACE (TYP.)
- CLEAR FLOOR SPACE CENTERED ON LOW DRINKING FOUNTAIN.
- MIRROR LOCATION. SEE DETAIL 7 THIS SHEET FOR MOUNTING HEIGHTS AND DIMENSIONS.
- NUMBERS INDICATE MINIMUM CLEAR AREA AT FLOOR SPACE DIAGRAMS (TYP.)
- REFRIGERATOR LOCATION
- APPROXIMATE LOCATION OF BREAKROOM TABLE BY HFT.
- BREAK ROOM CABINETS. SEE DETAILS 10&11 THIS SHEET
- THINAIR HAND DRYER (110V-120V, 7 AMP/5). MODEL #TA-ABS, WITH ANTI-MICROBIAL WALL GUARDS. ID #895. SEE ELECTRICAL DRAWINGS FOR ADDITIONAL INFO.
- BREAKROOM SINK SEE P1.0 PLUMBING FIXTURES SPECIFICATIONS.
- MOP SINK - REFER TO PLUMBING DRAWINGS FOR ADDITIONAL INFORMATION.
- USE 1/2" GREEN BOARD IN PLACE OF 5/8" GYP BOARD AS NOTED.
- GRAB BARS. SEE DETAILS 2, 3, & 8 / A4.0 FOR ADDITIONAL INFORMATION.
- SANITARY NAPKIN DISPOSAL BOBBICK MODEL #B-270.
- (2) 12" DEEP WHITE WIRE SHELVES FOR CLEANING SUPPLIES.
- TOILET SEAT COVER DISPENSER TORK MODEL #89A.



5 ACCESSIBLE LAVATORY PLAN & ELEVATION
A4.0 SCALE: 1/2" = 1'-0"



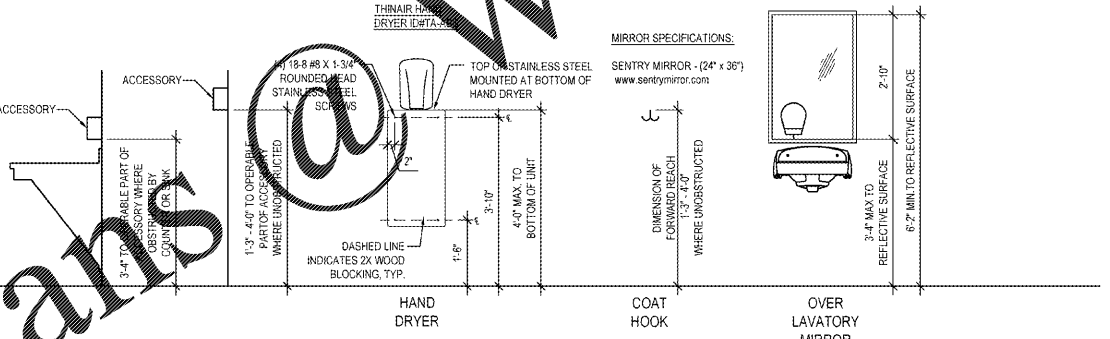
4 ACCESSIBLE DRINKING FOUNTAIN ELEVATIONS
A4.0 SCALE: 1/2" = 1'-0"



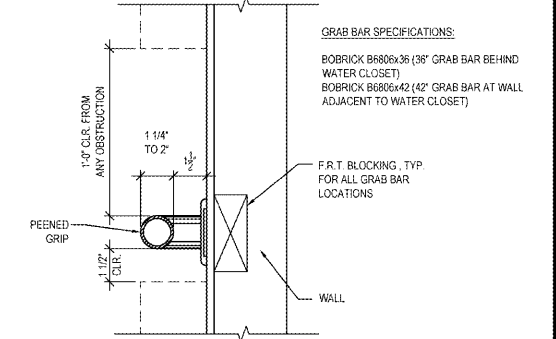
NOTES:

- CHARACTERS, SYMBOLS AND THEIR BACKGROUND SHALL HAVE A NON-GLARE FINISH. CHARACTERS AND SYMBOLS SHALL CONTRAST WITH THEIR BACKGROUND.
- CHARACTERS ON SIGNS SHALL BE RAISED 1/32" MINIMUM & SHALL BE SANS SERIF UPPERCASE CHARACTERS. CHARACTERS SHALL BE A MINIMUM OF 5/8" AND A MAXIMUM OF 2" HIGH.
- BRILLE SHALL BE GRADE 2 AND SHALL COMPLY SIZE AND SPACING REQUIREMENTS IN THE ACCESSIBILITY CODE. BRILLE CHARACTERS SHALL BE LOCATED BELOW THE SIGN TEXT, WITH A 3/8" MINIMUM SPACE BETWEEN BRILLE AND TEXT OR OTHER SIGNAGE ELEMENTS (BORDER, PICTOGRAM, ETC).
- PICTOGRAMS SHALL BE ACCOMPANIED BY THE VERBAL DESCRIPTION PLACED DIRECTLY BELOW THE PICTOGRAM. THE OUTSIDE DIMENSION OF THE PICTOGRAM FIELD SHALL BE A MINIMUM OF 6" IN HEIGHT.

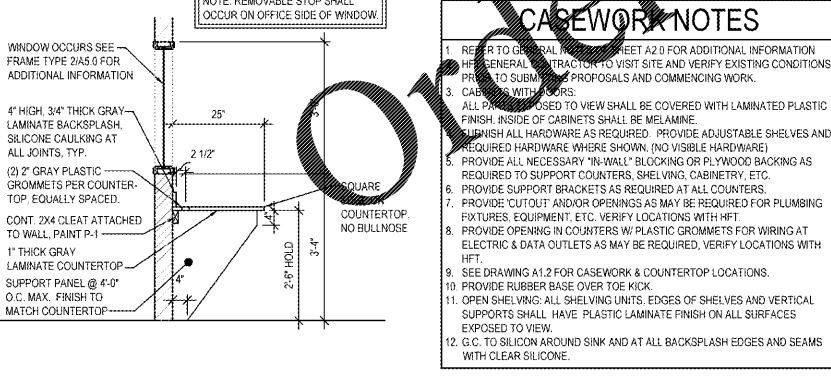
6 SIGN DETAILS
A4.0 SCALE: N.T.S.



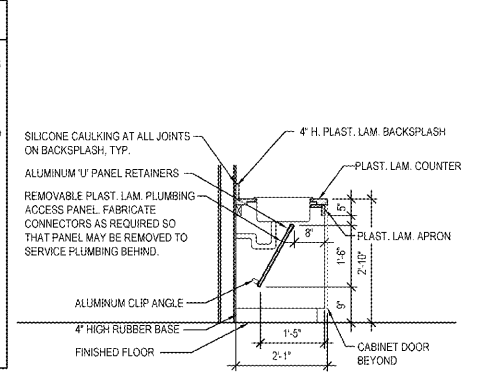
ACCESSORY MOUNTING HEIGHTS
A4.0 SCALE: 1/2" = 1'-0"



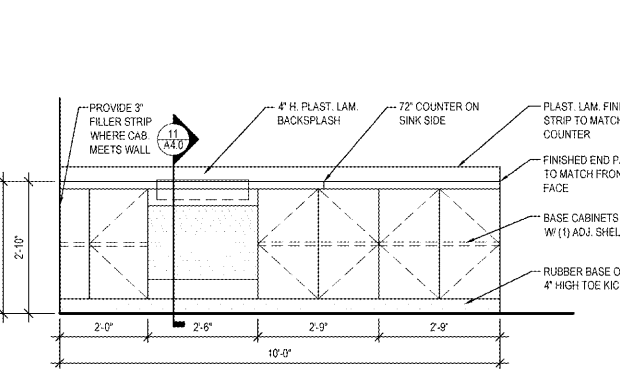
8 GRAB BAR SECTION
A4.0 SCALE: N.T.S.



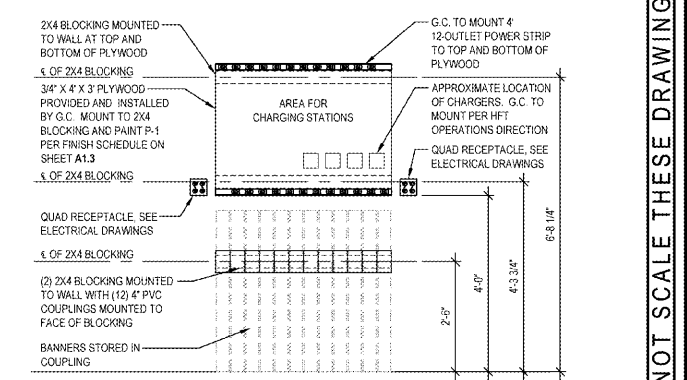
12 OFFICE COUNTERTOP SECTION
A4.0 SCALE: 1/2" = 1'-0"



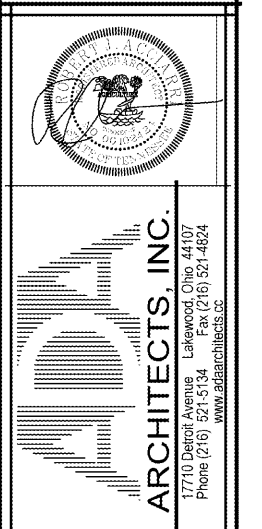
11 COUNTERTOP SECTION @ SINK
A4.0 SCALE: 1/2" = 1'-0"



10 BREAK ROOM CASEWORK ELEVATION
A4.0 SCALE: 1/2" = 1'-0"



9 BANNER AND CHARGING STATION
A4.0 SCALE: 1/2" = 1'-0"



HARBOR FREIGHT TOOLS
705 WYATT ROAD NORTHWEST
CLEVELAND, TN 37312

ARCHITECTS, INC.
17710 Detroit Avenue Lakewood, Ohio 44107
Phone (216) 521-5134 Fax (216) 521-14824
www.architects.com

REVISIONS

#	DATE	TYPE
1		
2		
3		
4		
5		
6		
7		
8		
9		
10		

RESTROOM & CASEWORK DETAILS

DATE 06/02/20
JOB NO. 19155
A4.0
SHEET NO.

CASEWORK NOTES

- REFER TO GENERAL CONTRACT SET A2.0 FOR ADDITIONAL INFORMATION.
- GENERAL CONTRACTOR TO VISIT SITE AND VERIFY EXISTING CONDITIONS PRIOR TO SUBMITTING PROPOSALS AND COMMENCING WORK.
- CABINETS WITH DOORS:
- ALL PARTS EXPOSED TO VIEW SHALL BE COVERED WITH LAMINATED PLASTIC FINISH. INSIDE OF CABINETS SHALL BE MELAMINE.
- FURNISH ALL HARDWARE AS REQUIRED. PROVIDE ADJUSTABLE SHELVES AND REQUIRED HARDWARE WHERE SHOWN. (NO VISIBLE HARDWARE)
- PROVIDE ALL NECESSARY "IN-WALL" BLOCKING OR PLYWOOD BACKING AS REQUIRED TO SUPPORT COUNTERS, SHELVING, CABINERY, ETC.
- PROVIDE SUPPORT BRACKETS AS REQUIRED AT ALL COUNTERS.
- PROVIDE CUTOFF AND/OR OPENINGS AS MAY BE REQUIRED FOR PLUMBING FIXTURES, EQUIPMENT, ETC. VERIFY LOCATIONS WITH HFT.
- PROVIDE OPENING IN COUNTERS W/ PLASTIC GROMMETS FOR WIRING AT ELECTRIC & DATA OUTLETS AS MAY BE REQUIRED. VERIFY LOCATIONS WITH HFT.
- SEE DRAWING A1.2 FOR CASEWORK & COUNTERTOP LOCATIONS.
- PROVIDE RUBBER BASE OVER TOE KICK.
- OPEN SHELVING: ALL SHELVING UNITS, EDGES OF SHELVES AND VERTICAL SUPPORTS SHALL HAVE PLASTIC LAMINATE FINISH ON ALL SURFACES EXPOSED TO VIEW.
- G.C. TO SILICONE AROUND SINK AND AT ALL BACKSPLASH EDGES AND SEAMS WITH CLEAR SILICONE.

ORDER Plans @ WWW.WYATTLINE.COM

SILICONE CAULKING AT ALL JOINTS ON BACKSPLASH, TYP.

ALUMINUM U PANEL RETAINERS

REMOVABLE PLAST. LAM. PLUMBING ACCESS PANEL. FABRICATE CONNECTORS AS REQUIRED SO THAT PANEL MAY BE REMOVED TO SERVICE PLUMBING BEHIND.

4" H. PLAST. LAM. BACKSPLASH

PLAST. LAM. COUNTER

PLAST. LAM. APRON

ALUMINUM CLIP ANGLE

4" HIGH RUBBER BASE

FINISHED FLOOR

CABINET DOOR BEYOND

PROVIDE 3" FILLER STRIP WHERE CAB MEETS WALL

4" H. PLAST. LAM. BACKSPLASH

72" COUNTER ON SINK SIDE

PLAST. LAM. FINISH STRIP TO MATCH COUNTER

FINISHED END PANELS TO MATCH FRONT FACE

BASE CABINETS W/ (1) ADJ. SHELF

RUBBER BASE OVER 4" HIGH TOE KICK

2X4 BLOCKING MOUNTED TO WALL AT TOP AND BOTTOM OF PLYWOOD

3/4" x 4" x 3" PLYWOOD PROVIDED AND INSTALLED BY G.C. MOUNT TO 2X4 BLOCKING AND PAINT P-1 PER FINISH SCHEDULE ON SHEET A1.3

AREA FOR CHARGING STATIONS

APPROXIMATE LOCATION OF CHARGERS. G.C. TO MOUNT PER HFT OPERATIONS DIRECTION

QUAD RECEPTACLE. SEE ELECTRICAL DRAWINGS

2X4 BLOCKING MOUNTED TO WALL WITH (2) 4" PVC COUPLINGS MOUNTED TO FACE OF BLOCKING

BANNERS STORED IN COUPLING

DO NOT SCALE THESE DRAWINGS