

MATERIAL LEGEND	
SYMBOL	DESCRIPTION
MTL-1	PRE-FINISHED INSULATED TEXTURED METAL PANELS COLOR: TUFF-CAST ANTIQUE BRONZE - TEXTURE COATING #MDD0152
MTL-2	PRE-FINISHED INSULATED TEXTURED METAL PANELS, COLOR: TUFF-CAST TEXTURED WHITE - TUFF COE FINISH SYSTEM COATING #MDD0151
MTL-3	PRE-FINISHED METAL TRIMCOPIING COLOR: TO MATCH MTL-1
MTL-4	PRE-FINISHED METAL TRIMCOPIING COLOR: TO MATCH MTL-2
MTL-5	STANDING SEAM METAL CANOPY BY PAC-CLAD COLOR: INTERSTATE BLUE
MTL-6	GUTTER COLOR: TO MATCH MTL-2
MTL-7	DOWNSPOUT COLOR: TO MATCH MTL-1
MAS-1	STONE FACADE - MANUFACTURER: CORONADO STONE PRODUCTS, TYPE: OLD COUNTRY LEDGE, COLOR: HURON
POLY-1	SPECTIS MOULDERS INC. POLYURETHANE MOULDING: MD 1045 - PAINT TO MATCH TUFF-CAST ANTIQUE BRONZE - TEXTURE COATING #MDD0152
POLY-2	SPECTIS MOULDERS INC. POLYURETHANE MOULDING: MD 1045 - PAINT TO MATCH TUFF-CAST TEXTURED WHITE - TEXTURE COATING #MDD0151
SILL-1	WATERTABLE SILL - MANUFACTURER: CORONADO STONE PRODUCTS, TYPE: 900 SERIES SILL, COLOR: #2 GREY

- GENERAL NOTES**
- REFER TO GENERAL NOTES ON SHEET A0.2 FOR ADDITIONAL INFORMATION.
 - SIGNAGE PERMIT DRAWINGS TO BE SUBMITTED SEPARATELY. HFT GENERAL CONTRACTOR TO VISIT SITE AND VERIFY EXISTING CONDITIONS PRIOR TO SUBMITTING PROPOSALS AND COMMENCING WORK.
 - SIGNAGE SHOWN FOR REFERENCE ONLY - ACTUAL SIGNAGE SIZE AND TYPE TO BE DETERMINED BY HFT AND LANDLORD.
 - ALL SIGNAGE TO COMPLY WITH LANDLORD TENANT CRITERIA AND STATE / LOCAL CODES.
 - COORDINATE WITH SIGNAGE VENDOR FOR ANY SPECIFIC CRITERIA TO BE USED.
 - ALL SIGNAGE TO BE UL RATED.
 - EXISTING STOREFRONT CONSTRUCTION AND FINISHES TO REMAIN U/I/O.
 - WHERE A SURFACE IS NOTED TO BE PAINTED, PAINTING SHALL INCLUDE SURFACE PREPARATION FOR PAINT ACCORDING TO PAINT MANUFACTURER RECOMMENDATIONS. ALL GLASS IS TEMPERED.

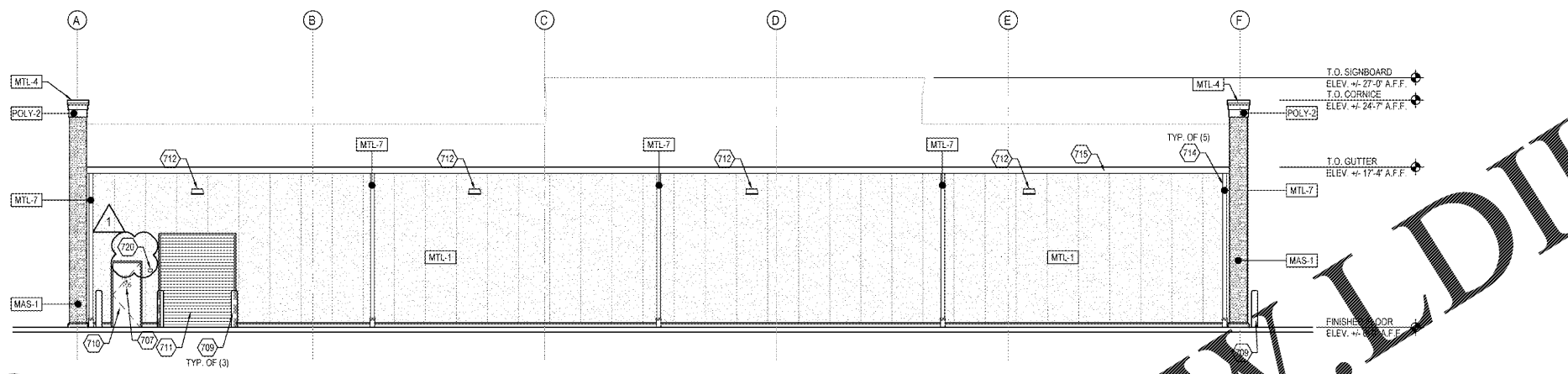
- 700 SERIES ELEVATION KEY NOTES**
- DORMA BI-PARTING DOOR SYSTEM. SEE SHEETS A5.0 AND A5.1 FOR ADDITIONAL INFORMATION.
 - SIGNAGE BANNER. PROVIDE 3/8" GALVANIZED EYELETS SPACED AS SHOWN ON DETAIL 1A3.1.
 - APPROXIMATE LOCATION OF HFT EXTERIOR BUILDING SIGN. BUILDING SIGNAGE PROVIDED AND INSTALLED BY HFT SIGN VENDOR. HFT GENERAL CONTRACTOR TO COORDINATE ACTUAL SIGNAGE LOCATION WITH FINAL APPROVED BRANDBOOK. LOCATION AND SIZE SHOWN ARE APPROXIMATE. ALL SIGNAGE IS BY SEPARATE PERMIT. G.C. TO PROVIDE AND INSTALL SIGNAGE BLOCKING AND POWER AS COORDINATED WITH SIGNAGE VENDOR. G.C. RESPONSIBLE FOR PATCH AND REPAIR OF WALL / ROOF WHERE AFFECTED BY SIGNAGE INSTALL.
 - G.O. TO INSTALL STANDING SEAM METAL ENTRY CANOPY BY PAC CLAD IN INTERSTATE BLUE.
 - ALUMINUM FRAME TRANSOM SYSTEM. SEE SHEET A5.1 FOR ADDITIONAL INFORMATION.
 - PROVIDE 8" HIGH WHITE VINYL NUMBERS STATING STREET ADDRESS IN HELVETICA FONT STYLE ON TRANSOM. SEE DOOR SCHEDULE NOTES ON SHEETS A5.0 AND A5.1 FOR ADDITIONAL INFORMATION.
 - PROVIDE 8" HIGH VINYL LETTERING STATING "HFT" AND STREET ADDRESS IN HELVETICA FONT. COLOR TO CONTRAST WITH DOOR.
 - 8" PIPE BOLLARD. SEE SHEET A1.1 AND DETAIL 3A4.1 FOR ADDITIONAL INFORMATION.
 - 8" PIPE BOLLARD. SEE SHEET A1.1 AND DETAIL 3A4.1 FOR ADDITIONAL INFORMATION.
 - HOLLOW METAL DOOR AND FRAME TO BE PAINTED TO MATCH ADJACENT WALL FINISH. SEE SHEETS A1.3 AND A5.0 FOR ADDITIONAL INFORMATION.
 - OVERHEAD DOOR. SEE DOOR SCHEDULE ON SHEET A5.0 FOR ADDITIONAL INFORMATION.
 - WALL MOUNTED LIGHT FIXTURE. SEE SHEET A2.0 AND ELECTRICAL DRAWINGS FOR ADDITIONAL INFORMATION.
 - ADA ACCESSIBLE CURB RAMP. SEE SITE PLAN ON SHEET A5.1 AND CIVIL DRAWINGS FOR ADDITIONAL INFORMATION.
 - DOWNSPOUT. SEE P.E.M.B. DRAWINGS FOR ADDITIONAL INFORMATION.
 - GUTTER. SEE P.E.M.B. DRAWINGS FOR ADDITIONAL INFORMATION.
 - APPROXIMATE LOCATION OF GAS METER. SEE CIVIL AND MECHANICAL DRAWINGS FOR ADDITIONAL INFORMATION.
 - APPROXIMATE LOCATION OF ELECTRICAL EQUIPMENT AND TELEPHONE SERVICE. SEE CIVIL AND ELECTRICAL DRAWINGS FOR ADDITIONAL INFORMATION.
 - CLEAR ANODIZED ALUMINUM STOREFRONT SYSTEM. SEE SHEET A5.1 FOR ADDITIONAL INFORMATION.
 - APPROXIMATE LOCATION OF EDC. SEE PLUMBING AND CIVIL DRAWINGS.
 - PROPOSED KNOX BOX LOCATION. FINAL LOCATION TO BE COORDINATED AND APPROVED BY THE A.H.J.

- BANNER PULLEY INSTALLATION INSTRUCTION**
- REFER TO DETAIL 1A3.1 FOR EYELET/SCREW/EYE SPACING AND 1A3.1 FOR FULL PLACEMENT DETAIL.
 - INSTALL TWO EYELETS AT THE HIGHEST ELEVATION AND THREE SCREW HOOKS AT LOWEST ELEVATION. SEE DETAIL 2A3.1 FOR ADDITIONAL INFORMATION.
 - ATTACH PULLEY AND SNAP CLIP TO TOP EYELETS. SEE DETAIL 3A3.1.
 - REFER TO CHART 1A3.1, CUT PROPER TETHER LENGTHS USING PROVIDED 6" DIAGONAL CUTTER TOOL.
 - AT ONE END OF EACH TETHER, SECURE FERRULES, USING PROVIDED 9.5" CRIMPING/CUTTING TOOL. ACCORDING TO DETAIL 4A3.1. ENSURE THE LAST FERRULE COVERS THE EXCESS TETHER TO AVOID STORE ASSOCIATE INJURIES.
 - TAKING THE OPEN END OF THE TETHER, FEED IT THROUGH THE PULLEY UNTIL IT IS ACCESSIBLE FROM THE GROUND.
 - FEED THE OPEN END THROUGH THE OPEN TETHER AND BACK CREATING A LOOP. DO NOT CRIMP THIS FERRULE YET. SEE DETAIL 5A3.1.
 - REPEAT STEPS 5-8 FOR THE OTHER TETHER.
 - CLIP THE CLASPS TO THE TOP AND BOTTOM GROMMETS OF BANNER AND HOIST TO ITS HIGHEST POINT.
 - PULL THE TETHERS THROUGH THE BOTTOM EYE HOOKS, ADJUSTING THE UNCRIMPED FERREL AS NEEDED TO MAINTAIN THE LOOP PREVIOUSLY CREATED. SEE DETAIL 6A3.1.
 - USING THE BUNGEE CORDS HOOK ONE END INTO THE TETHER'S LOOP AND STRETCH IT AROUND THE CENTER SCREW HOOK AND HOOK THE OTHER END INTO THE TETHER'S LOOP. DO NOT WRAP EXCESS BUNGEE AROUND CENTER SCREW HOOK, USE A SMALLER BUNGEE CORD IF NEEDED.
 - CRIMP THE FERRULE USED TO CREATE THE LOOP TO SECURE THE LOOP IN PLACE.
 - FOR MORE INFORMATION REFER TO THE INSTRUCTION GUIDE INCLUDED WITH BANNER PULLEY KIT.

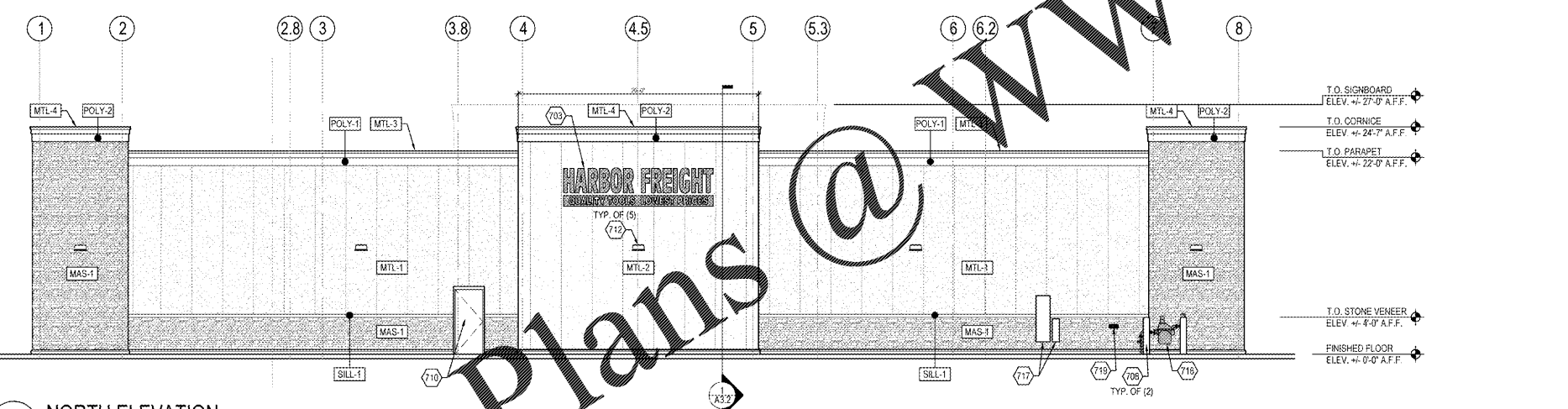
NOTE: SIGNAGE DEPICTED IS FOR REFERENCE ONLY AND IS TO BE REVIEWED AND PERMITTED UNDER SEPARATE SUBMISSION BY HARBOR FREIGHT TOOLS' VENDOR.

NOTE: ALL CAULK SHALL BE PROFESSIONAL BEAD COLOR MATCHED TO ADJACENT METAL PANELING.

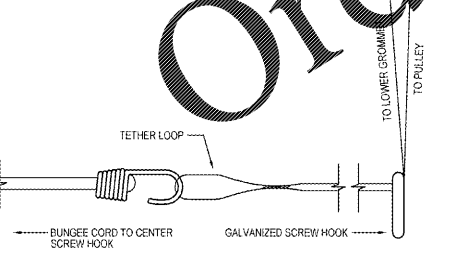
NOTE: ALL FLASHING AND TRIM TO BE MINIMUM OF 6"-0" IN LENGTH, WHERE JOINTS OCCUR, PROVIDE MINIMUM 3" OVERLAP SET IN FULL BED OF SEALANT.



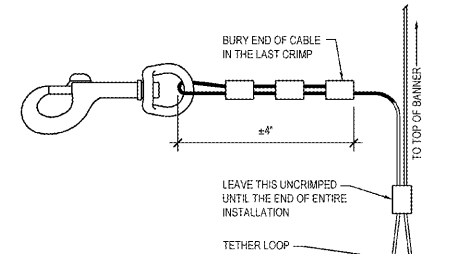
3 WEST ELEVATION
SCALE: 1/8" = 1'-0"



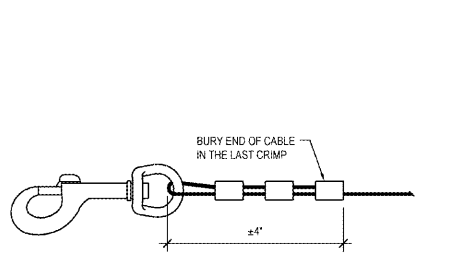
4 NORTH ELEVATION
SCALE: 1/8" = 1'-0"



6 HOISTING DETAIL
SCALE: 6" = 1'-0"



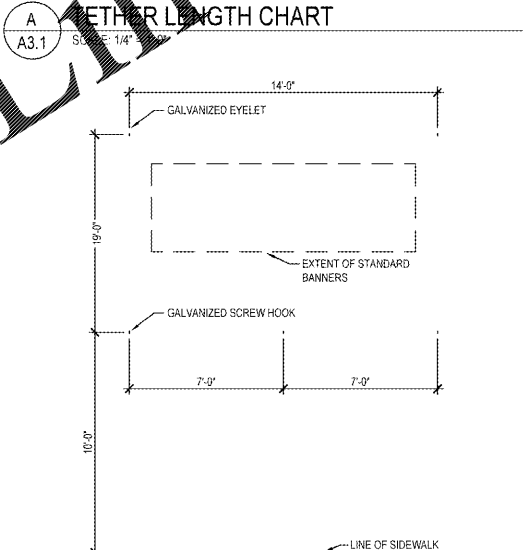
5 TETHER FERRULES "BOTTOM" DETAIL
SCALE: 6" = 1'-0"



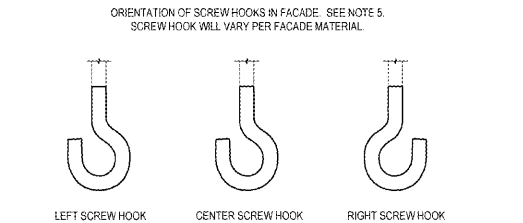
4 TETHER FERRULES "TOP" DETAIL
SCALE: 6" = 1'-0"

TETHER LENGTHS FOR THIS LOCATION

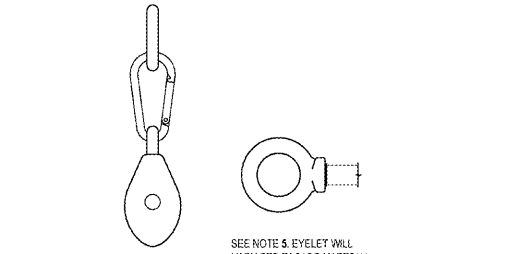
TOP EYELET HEIGHT	BOTTOM SCREW HOOK HEIGHT	RIGHT/LEFT TETHER LENGTH
10'-0"	10'-0"	25'-0"



1 EYELET AND SCREW HOOK SPACING DETAIL
SCALE: 1/4" = 1'-0"



2 SCREW HOOK ORIENTATION DETAIL
SCALE: 6" = 1'-0"



3 PULLEY AND EYELET DETAIL
SCALE: 6" = 1'-0"

ARCHITECTS, INC.
17710 Detroit Avenue, Lakewood, Ohio 44107
Phone (216) 521-5134 Fax (216) 521-4824
www.adaarchitects.com

HARBOR FREIGHT TOOLS
705 WYATT ROAD NORTHWEST
CLEVELAND, TN 37312

This document ("Instrument of Service") was prepared by ADA Architects, Inc. ("ADA") specifically for the referenced project and is not intended for any other use. ADA makes no warranty, express or implied, regarding the accuracy, completeness, or timeliness of the information contained herein. The Instrument of Service shall not be used on other projects. In addition to the project for which it was prepared, this Instrument of Service shall not be used for any other purpose without the prior written consent of ADA. ADA makes no warranty, express or implied, of merchantability or of fitness for a particular purpose. Unauthorized use of this Instrument of Service shall be at the user's sole risk and without liability to ADA. ADA makes no warranty, express or implied, of merchantability or of fitness for a particular purpose.

REVISIONS

#	DATE	TYPE	BY/DATE
1	06/02/20	BUILDING #1	
2			
3			
4			
5			
6			
7			
8			
9			
10			

EXTERIOR ELEVATIONS AND BANNER DETAILS

DATE: 06/02/20
JOB NO.: 19155

A3.1
SHEET NO.