

500 SERIES CEILING PLAN KEY NOTES

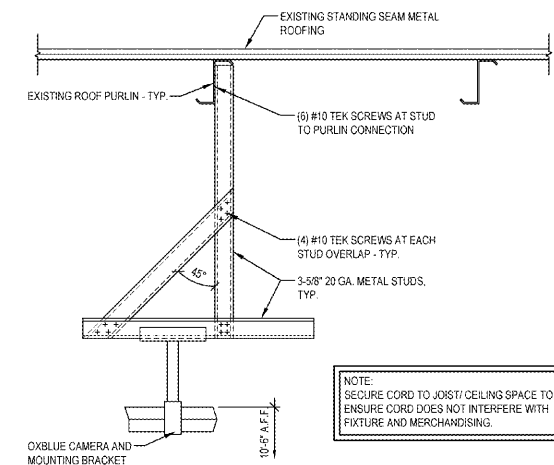
- 501 2 x 4 SUSPENDED CEILING SYSTEM. INSTALLED PER MANUFACTURERS SPECIFICATIONS. SEE FINISH SCHEDULE ON A1.3 FOR ADDITIONAL INFORMATION. CEILING TO BE CENTERED IN ROOM U.N.O.
- 502 APPROXIMATE LOCATION OF HVAC ROOFTOP UNIT ABOVE. REFER TO SHEET A2.1, P.E.M.B. AND MECHANICAL DRAWINGS FOR ADDITIONAL INFORMATION.
- 503 EXPOSED INSULATED ROOF PANELS. SEE P.E.M.B. DRAWINGS FOR ADDITIONAL INFORMATION. DO NOT PAINT LIGHT FIXTURES THROUGHOUT HFT SPACE. SEE ELECTRICAL DRAWINGS FOR ADDITIONAL INFORMATION.
- 504 SUPPLY AND RETURN AIR DIFFUSERS OCCUR AT ROOM LOCATIONS. SEE MECHANICAL DRAWINGS FOR ADDITIONAL INFORMATION.
- 505 MOUNT OX-BLUE CAMERA PER DETAIL 1 THIS SHEET, 12'-0" FROM CORNER OF THE SPACE AT 45° ACROSS THE SALES AREA.
- 506 WALL MOUNTED EXTERIOR LIGHT FIXTURE. SEE ELECTRICAL DRAWINGS FOR ADDITIONAL INFORMATION.
- 507 STANDING SEAM METAL ENTRY CANOPY. SEE SHEET A3.0 FOR ADDITIONAL INFORMATION.
- 508 OVERHEAD COIL-UP DOOR HOUSING. SEE SHEET A5.0 FOR ADDITIONAL INFORMATION.
- 509 ROOF HATCH. HATCH TO BE BILCO TYPE 30" x 30" GALVANIZED STEEL ROOF HATCH & METAL CURB WITH INTEGRAL CAP FLASHING AND INSULATION. SEE P.E.M.B. DRAWINGS FOR ADDITIONAL INFORMATION.
- 510 GYPSUM BOARD SHELF AT 6'-0" A.F.F. TO BE PAINTED. SEE SHEET A1.3 AND DETAIL 144.1 FOR ADDITIONAL INFORMATION.
- 511 STEEL STRUCTURE TO REMAIN EXPOSED. PRIMED GRAY.
- 512 ELECTRIC UNIT HEATER CABINET (AS REQUIRED - SITES OCCURRING ABOVE 36TH PARALLEL.) SEE MECHANICAL DRAWINGS FOR ADDITIONAL INFORMATION.
- 513 APPROXIMATE LOCATION OF SKYLIGHT. PROVIDE BURGLAR BARS AT 5' ON-PAN AT 45° SKYLIGHTS TO BE PAINTED WHITE. SEE SHEET A2.1 AND P.E.M.B. DRAWINGS FOR ADDITIONAL INFORMATION.
- 514 APPROXIMATE LOCATION OF STRUCTURAL CROSS BRACING. SEE P.E.M.B. DRAWINGS FOR ADDITIONAL INFORMATION.
- 515 APPROXIMATE LOCATION OF GAS UNIT HEATER. (AS REQUIRED - SITES OCCURRING ABOVE 36TH PARALLEL.) SEE MECHANICAL DRAWINGS FOR ADDITIONAL INFORMATION.
- 516 SPRINKLER SYSTEM THROUGHOUT. SEE FP1.0 FOR ADDITIONAL INFORMATION.
- 517 DUCTWORK. SEE MECHANICAL DRAWINGS FOR ADDITIONAL INFORMATION.

CEILING PLAN LEGEND

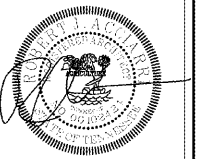
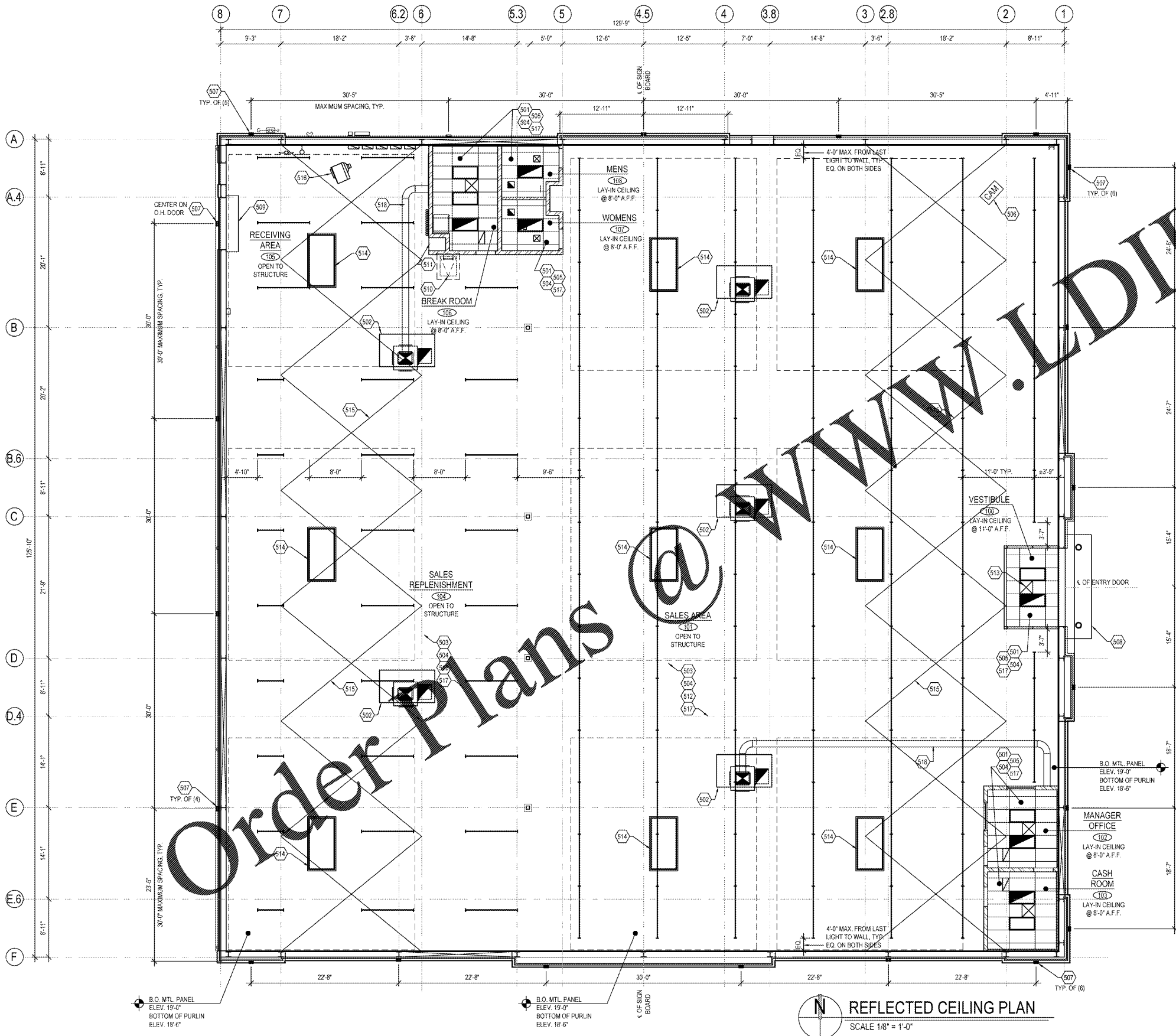
2 X 4 RECESSED LIGHT FIXTURE. SEE ELECTRICAL DRAWINGS FOR ADDITIONAL INFORMATION.	SUPPLY AIR DIFFUSER. SEE MECHANICAL PLANS FOR ADDITIONAL INFORMATION.		
8' SURFACE MOUNTED LIGHT FIXTURE. SEE ELECTRICAL DRAWINGS FOR ADDITIONAL INFORMATION.	RETURN AIR DIFFUSER. SEE MECHANICAL PLANS FOR ADDITIONAL INFORMATION.		
4' SURFACE MOUNTED LIGHT FIXTURE. SEE ELECTRICAL DRAWINGS FOR ADDITIONAL INFORMATION.	EXHAUST FAN. SEE MECHANICAL PLANS FOR ADDITIONAL INFORMATION.		
EXTERIOR WALL MOUNTED LIGHT FIXTURE. SEE ELECTRICAL DRAWINGS FOR ADDITIONAL INFORMATION.	ELECTRIC UNIT HEATER. SEE MECHANICAL PLANS FOR ADDITIONAL INFORMATION.		

CEILING PLAN GENERAL NOTES

1. REFER TO GENERAL NOTES OF SHEET A0.2 FOR ADDITIONAL INFORMATION.
2. HFT G.C. TO VISIT SITE AND VERIFY EXISTING CONDITIONS PRIOR TO SUBMITTING PROPOSALS AND COMMENCING WORK.
3. HFT G.C. TO NOTIFY HFT PROJECT MANAGER IMMEDIATELY AFTER DEMOLITION OR START OF CONSTRUCTION. IF PROPOSED CEILING HEIGHTS & MECHANICAL REQUIREMENTS CAN NOT BE ACHIEVED FOR ANY REASON.
4. HFT G.C. IS RESPONSIBLE FOR PATCHING & REPAIRING ALL FIREPROOFING AS REQUIRED DUE TO PRIOR TENANT CONSTRUCTION AND DUE TO ANY NEW DEMOLITION OR NEW CONSTRUCTION TO MEET BOTH LANDLORD AND BUILDING DEPARTMENT REQUIREMENTS.
5. HFT G.C. TO PROVIDE CEILING ACCESS PANELS AS REQUIRED TO ACCOMMODATE ELECTRICAL, PLUMBING, SPRINKLER AND/OR MECHANICAL SERVICES THAT PASS THROUGH THE LEASED PREMISES. IE. J-BOXES, DUCT SMOKE DETECTORS, FIRE DAMPERS, FLOW SWITCHES, UTILITY CONNECTION POINTS, ETC.
6. SUSPENSION WIRES SHALL BE INSTALLED WITH A MAXIMUM SPACING OF 48" O.C.
7. ALL LAY-IN CEILING GRIDS SHALL BE CENTERED IN ROOM U.N.O.
8. SEE FP1.0 FOR SPRINKLER INFORMATION.



1 OXBLUE MOUNTING DETAIL
SCALE: 3/4" = 1'-0"



HARBOR FREIGHT TOOLS ARCHITECTS, INC.
17710 Detroit Avenue Lakewood, Ohio 44107
Phone (216) 521-5134 Fax (216) 521-14824
www.a2architects.com

HARBOR FREIGHT TOOLS
705 WYATT ROAD NORTHWEST
CLEVELAND, TN 37312

DO NOT SCALE THESE DRAWINGS

#	DATE	TYPE
1		
2		
3		
4		
5		
6		
7		
8		
9		
10		

REFLECTED CEILING PLAN
DATE 06/02/20
JOB NO. 19155
A2.0
SHEET NO.