

### ASSEMBLY PROCEDURE...

- 11) Install all kickplates. Kickplates snap directly in from front.
- 12) Pull both end uprights forward to bring the kickplates to the chalkline, then plumb using a level against face of upright and adjusting the base shoe levelers.
- 13) Attach the nylon line to end upright as shown. Attach line at corresponding slot on opposite end upright, draw taut and secure.
- 14) Examine all uprights at nylon line to determine the highest upright in run, excluding end uprights. Pull this highest upright forward until kickplate is on the chalkline. If run is a gondola, plumb at base shoe levelers... if run is a wall, plumb at upright and base shoe levelers.

**IMPORTANT!**  
There must be enough clearance between the bottom of the upright and the head of the level leg to allow installation of anchors!

**NOTE:**  
IF IT BECOMES NECESSARY TO EXTEND THE LEVELING LEGS BEYOND 1-1/2" SHIMS MUST BE USED TO RAISE THE FLOOR LEVEL.

**STEP 11 KICKPLATES**

SFA-RD REGULAR DUTY FLOOR ANCHOR, REQUIRES ONE (1) FASTENER TO FLOOR

SFA-HD REGULAR DUTY FLOOR ANCHOR, REQUIRES TWO (2) FASTENERS TO FLOOR

15) Working with the remaining uprights in succession, bring kickplates up to chalkline, then adjust for height at upright leveler and plumb at base shoes.

16) Raise or lower end uprights until slots on ends and highest upright correspond relative to the nylon line. THEN REPLUMB BOTH END UPRIGHTS!

**WARNING! NEVER EXCEED LEVEL LEGS OVER 1 1/2"!**

**madix**  
STORE FIXTURES  
100 BAY 724 FERRIS, TEXAS 75102  
714-212-5999 FAX 714-212-5998  
ASY-046 PAGE 11 OF 15 REV 06  
10/18/06 AJB ECR45000000102840

### ASSEMBLY PROCEDURE...

UC - STEP 20  
STL (HW) - STEP 19

**IMPORTANT!**  
CHECK ALIGNMENT AND LEVEL OF RUN BEFORE ANCHORING!

17) On gondola uprights only: Run level legs up off the floor approximately 1/4". THIS APPLIES TO ALL GONDOLA UPRIGHTS REGARDLESS OF ANCHORING. ONLY BASE SHOE LEVELERS ARE ANCHORED ON GONDOLAS, NOT UPRIGHT LEVELERS.

18) Remove the nylon string used in leveling and install remaining back panels in the run.

19) Install top spanners. Make sure that back panel first lance is properly installed upright end covers. UEC is plastic, VC is metal. THESE MUST BE IN PLACE BEFORE UIC (UPRIGHT CAPS) ARE INSTALLED.

20) If VCs (metal upright covers) are installed, install upright caps so that the short plastic extrusion is captured in the slot atop of the VC and tabs snap behind top lance.

21) To install the BECs (Base End Covers), simply slide them over the BS (Base Shoes). The BECs are held in place by the base shoes.

22) VERIFY ALIGNMENT AND LEVEL OF RUN. If floor anchors are required, install them now. SEE ASY-35 FOR PROPER ANCHORING PROCEDURES.

**WARNING!**  
DO NOT HANG SHELVING, PEG HOOKS OR OTHER ACCESSORIES THAT EXCEED THE DEPTH OF THE BASE ON A GONDOLA OR WALL.

**madix**  
STORE FIXTURES  
100 BAY 724 FERRIS, TEXAS 75102  
714-212-5999 FAX 714-212-5998  
ASY-046 PAGE 12 OF 15 REV 06  
10/18/06 AJB ECR45000000102840

### WALL RUN INSTALLATION AND WALL RUN ANCHORING...

Uprights will be anchored to a single run of 2 x 4 furring strips secured at approximately 8" below the top of the uprights, subject to leveling.

\*Determine run length and location... then strike a chalkline on the wall at upright height, minus 8", to align the top edge of the furring strips.

\*Start with a 16' long 2 x 4, finishing the rest of run with 8' long 2 x 4's, this insures that uprights will not be on a joint.

**ONE 2X4 FOR UPRIGHTS UP TO 96"**  
**TWO 2X4s FOR UPRIGHTS OVER 96"**  
**ONE 2X4 FOR EXTENSION (EU) UP TO 36"**  
**TWO 2X4s FOR EXTENSIONS (EU) OVER 36"**

Installation of wall fixture follows same procedure as the gondola instructions, steps 1 through 11, EXCEPT:

\*No chalkline is necessary... set back of uprights approximately 1" away from furring strips.

\*If using basic upright wall mount support, BUWMS, install in rear side of upright in 10th slot from top.

Push fixture back against furring strips and proceed with plumb and level steps 12 through 16, visually sighting kickplate alignment.

\*If using BUWMS wall mount support, secure to furring strips with appropriate hardware, shimming behind the BUWMS as necessary.

\*If not using BUWMS, secure upright to furring strips with appropriate fasteners into 10th slot from top.

Complete steps 17 through 21.

\*If base shaves have a wedge shaped gap, it will be necessary to push in at the gap and/or pull out at adjustment joints... readjustment of the base shaves may be necessary.

**WARNING!**  
FAILURE TO PROPERLY ANCHOR WALL FIXTURE SYSTEMS AT EXTENSIONS MAY RESULT IN INJURY OR DEATH.  
ANCHORING HARDWARE THAT RESISTS A MINIMUM OF 800 lbs PULL OUT FORCE.  
MANY TYPES OF WALL CONSTRUCTION WILL BE ENCOUNTERED. USE FASTENERS APPROPRIATE FOR BOTH WALL TYPE AND LOAD SITUATION.  
CONTACT A LOCAL STRUCTURAL ENGINEER FAMILIAR WITH CODES IN YOUR AREA. MADIX CAN PROVIDE THE CONTACT FOR A STRUCTURAL ENGINEER IF REQUIRED.

**madix**  
STORE FIXTURES  
100 BAY 724 FERRIS, TEXAS 75102  
714-212-5999 FAX 714-212-5998  
ASY-046 PAGE 13 OF 15 REV 06  
10/18/06 AJB ECR45000000102840

### FIXTURE LOADING AND PRODUCT SAFETY...

**GENERAL**

- 1) Contact the local building department prior to starting installation to check on any restrictions.
- 2) Only parts and accessories produced or supplied by Madix are covered by Madix warranty.
- 3) Installation sequence must be followed exactly for assembly and leveling.
- 4) Under no circumstances should damaged parts be used.
- 5) Do not use shelving parts or accessories for any purpose other than originally intended.
- 6) Installation instructions with product load ratings are included with each order and must be followed carefully.
- 7) Employees must be made aware of possible overloading as specified in load ratings. If you do not receive these, please contact your sales or customer service representative.
- 8) Initial installation or relocation of Madix gondola or wall fixtures should be supervised exclusively by qualified personnel.

**GONDOLA /WALL SHELVING**

- 9) Never install shelves or accessories into the side of an upright that has no base shoes on that side.
- 10) Be sure all shelving parts or accessories are completely seated in slotting or perforations.
- 11) Do not permit climbing or standing on shelving at any time... including base shelves.
- 12) Do not attempt to relocate merchandised shelves or accessories.
- 13) Never try to move completed fixtures, especially if merchandised.
- 14) No shelves or accessories should project past the front of the base shelf.
- 15) Base end covers and upright end covers must always be installed at the end of a run.
- 16) To avoid collisions with upper shelves or accessories, all displays used on gondola ends should have a base shelf, metal end flat, or other base end treatment.

**WARNING!**  
ALL CAPACITIES ARE FOR EVENLY DISTRIBUTED LOAD.

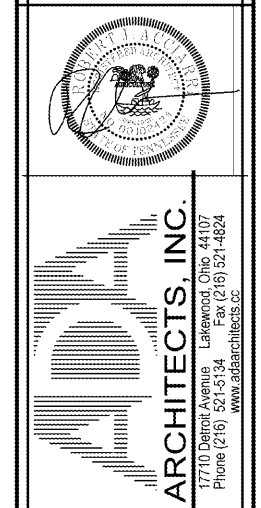
**IMPORTANT!**  
CAPACITIES ARE REDUCED BY 30% WHEN ONLY THE FRONT HALF OF THE SHELF IS LOADED!

**IMPORTANT!**  
CAPACITIES LISTED ARE FOR SHELVES INSTALLED IN MADIX MAXI SHELVING SYSTEM ONLY!

Shelf Type	Shelf Depth	FLAT		16" Down	30" Down
		Evenly Loaded	Front Loaded		
SUSPENDED	4" - 8"	300#	310#	125#	100#
	8" - 16"	500#	300#	125#	100#
STANDARD	4" - 8"	500#	310#	250#	100#
	8" - 16"	400#	300#	200#	100#
STIFF-GRID	4" - 8"	800#	300#	200#	100#
	8" - 16"	700#	300#	200#	100#
RISER GRID	4" - 8"	800#	300#	200#	100#
	8" - 16"	800#	300#	150#	100#
SUSPENDED	4" - 8"	800#	300#	150#	100#
	8" - 16"	800#	300#	150#	100#

\* Based on evenly distributed static loading.  
- 30% type shelves are "straight", horizontal shelves are "upright" shelving.

**madix**  
STORE FIXTURES  
100 BAY 724 FERRIS, TEXAS 75102  
714-212-5999 FAX 714-212-5998  
ASY-046 PAGE 14 OF 15 REV 06  
10/18/06 AJB ECR45000000102840



**HARBOR FREIGHT TOOLS**

ARCHITECTS, INC.

17710 Detroit Avenue Lakewood, Ohio 44107  
Phone (216) 521-5134 Fax (216) 521-4824  
www.adaarchitects.com

CLEVELAND, TN 37312

705 WYATT ROAD NORTHWEST

DO NOT SCALE THESE DRAWINGS

#	DATE	TYPE
1		
2		
3		
4		
5		
6		
7		
8		
9		
10		

REVISIONS

FIXTURE SPECIFICATIONS AND DETAILS

DATE 06/02/20

JOB NO. 19155

**A1.6**

SHEET NO.