

400 SERIES FIXTURE PLAN KEY NOTES

- 401. ABC CLASS 2A-208C (MIN.) WALL MOUNTED FIRE EXTINGUISHER PER CODE. FIRE EXTINGUISHERS LOCATED TO PROVIDE MAXIMUM FLOOR AREA PER UNIT OF 3,000 S.F. AND A MAXIMUM TRAVEL DISTANCE OF 75' AS SHOWN. CONTRACTOR TO VERIFY FINAL LOCATIONS WITH FIRE MARSHAL.
- 402. FRONT/BACK OF HOUSE FIXTURES ANCHORED TO SLAB PER MANF. INSTRUCTIONS. VERIFY ADDITIONAL REQUIREMENTS WITH THE HARBOR FREIGHT TOOLS CONSTRUCTION MANAGER. SEE A4.4, 1.5, 1.8, 1.7, 1.8, 1.9 AND 1.10 FOR ADDITIONAL INFORMATION.
- 403. CASH WRAP. HFT GENERAL CONTRACTOR TO VERIFY EXACT LOCATIONS WITH THE HARBOR FREIGHT TOOLS CONSTRUCTION MANAGER. REFER TO THE ELECTRICAL DRAWINGS FOR ELECTRICAL REQUIREMENTS. INSTALL ALL CASH WRAPS WITH A MAXIMUM COUNTER HEIGHT OF 34" A.F.F. FOR A MINIMUM COUNTER LENGTH OF 36" PER ACCESSIBILITY CODES. SEE DETAIL 12A4.0 FOR ADDITIONAL INFORMATION.
- 404. APPROXIMATE POWER POLE LOCATION. APPROXIMATE DECK AT POWER POLE IS 419'-2" IN HEIGHT. HFT GENERAL CONTRACTOR TO CONFIRM CASH WRAP IS IN PROPER LOCATION PRIOR TO POWER POLE INSTALLATION AND FINAL HOOK UP. E.C. TO PROVIDE AND INSTALL UNI-STRUT ATTACHED TO STRUCTURE FOR SECURING POWER POLE IN PLACE. PAINT UNI-STRUT TO MATCH.
- 405. EXPOSED STRUCTURE. CASH REGISTER (1) 6'-0" AND (1) 7'-0" FACTORY GRAY COUNTER TOP FOR THE MANAGERS OFFICE DESK AND (2) 6'-0" FACTORY GRAY COUNTER TOP FOR THE CASH ROOM DESK. SEE DETAIL 12A4.0 FOR ADDITIONAL INFORMATION.
- 407. GRAY GROMMET IN COUNTER BY HFT GENERAL CONTRACTOR. VERIFY EXACT LOCATION W/HFT.
- 408. APPROXIMATE LOCATION OF SAFE BY HFT. APPROXIMATE LOCATION OF IT CABINET BY HFT.
- 410. PRINTER.
- 411. "KRONOS SERIES 4000" TIME CLOCK. MOUNT CENTERED BETWEEN MANAGER OFFICE DOOR
- 412. WINDOW @ 44" A.F.F. LOCATION OF HFT FORKLIIFT BATTERY CHARGER. SEE ELECTRICAL DRAWINGS & DETAIL 2A1.2 FOR ADDITIONAL INFORMATION.
- 413. LOCATION OF HFT FORKLIIFT WATER TANK. SEE DETAIL 2A1.2.
- 414. LOCATION OF HFT EYE-WASH STATION. SEE DETAIL 2A1.2.
- 415. BANNER STORAGE AND CHARGING STATION. SEE DETAIL 9A4.0.

GENERAL NOTES

- 1. REFER TO GENERAL NOTES ON SHEET A0.2 FOR ADDITIONAL INFORMATION.
- 2. HFT GENERAL CONTRACTOR TO VISIT SITE AND VERIFY EXISTING CONDITIONS PRIOR TO SUBMITTING PROPOSALS AND COMMENCING WORK.
- 3. HFT GENERAL CONTRACTOR TO PROVIDE NON-COMBUSTIBLE CEILING AND WALL BLOCKING AS NECESSARY.
- 4. HFT GENERAL CONTRACTOR TO INSTALL POWER POLES FOR CASH WRAPS. LOCATIONS APPROXIMATE. COORDINATE WITH FIXTURE DESIGNER AND FOLLOW ALL GOVERNING CODES FOR FINAL LOCATIONS AND PLACEMENT.
- 5. HFT GENERAL CONTRACTOR TO FIELD SURVEY AND COORDINATE ACCESS OF ALL MILLWORK WITH HARBOR FREIGHT TOOLS OPERATIONS / STORE DESIGN.
- 6. HFT GENERAL CONTRACTOR AND FIXTURE FABRICATOR TO COORDINATE WITH APPROVED FIXTURE DRAWINGS.
- 7. HFT GENERAL CONTRACTOR TO COORDINATE WITH THE HARBOR FREIGHT TOOLS CONSTRUCTION MANAGER FOR NEW FIXTURE DROP LOCATIONS, TYPES, AND QUANTITIES.
- 8. ONLY GRAPHIC REPRESENTATIONS OF FIXTURES ARE SHOWN. ALL DIMENSIONS ARE APPROXIMATE. COORDINATE WITH FIXTURE DESIGNER AND FOLLOW ALL GOVERNING CODES FOR FINAL LOCATIONS AND PLACEMENT.
- 9. FIXTURE INSTALLER TO ADJUST FIXTURE LAYOUT AS REQUIRED TO PROVIDE 44" CLEAR PAST ANY COLUMN U.N.O.

SQUARE FOOTAGE BREAKDOWN

SALES AREA SQUARE FOOTAGE	16,520 S.F.
SALES REPLENISHMENT SQUARE FOOTAGE	6,096 S.F.
OFFICE AREA SQUARE FOOTAGE	887 S.F.
TOTAL OVERALL LEASE SQUARE FOOTAGE	16,520 S.F.

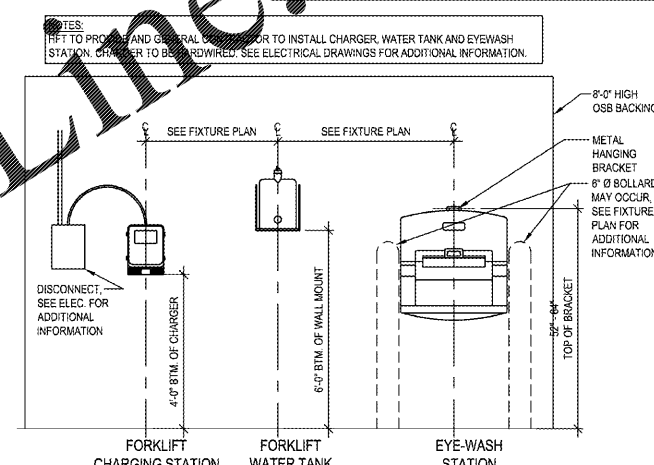
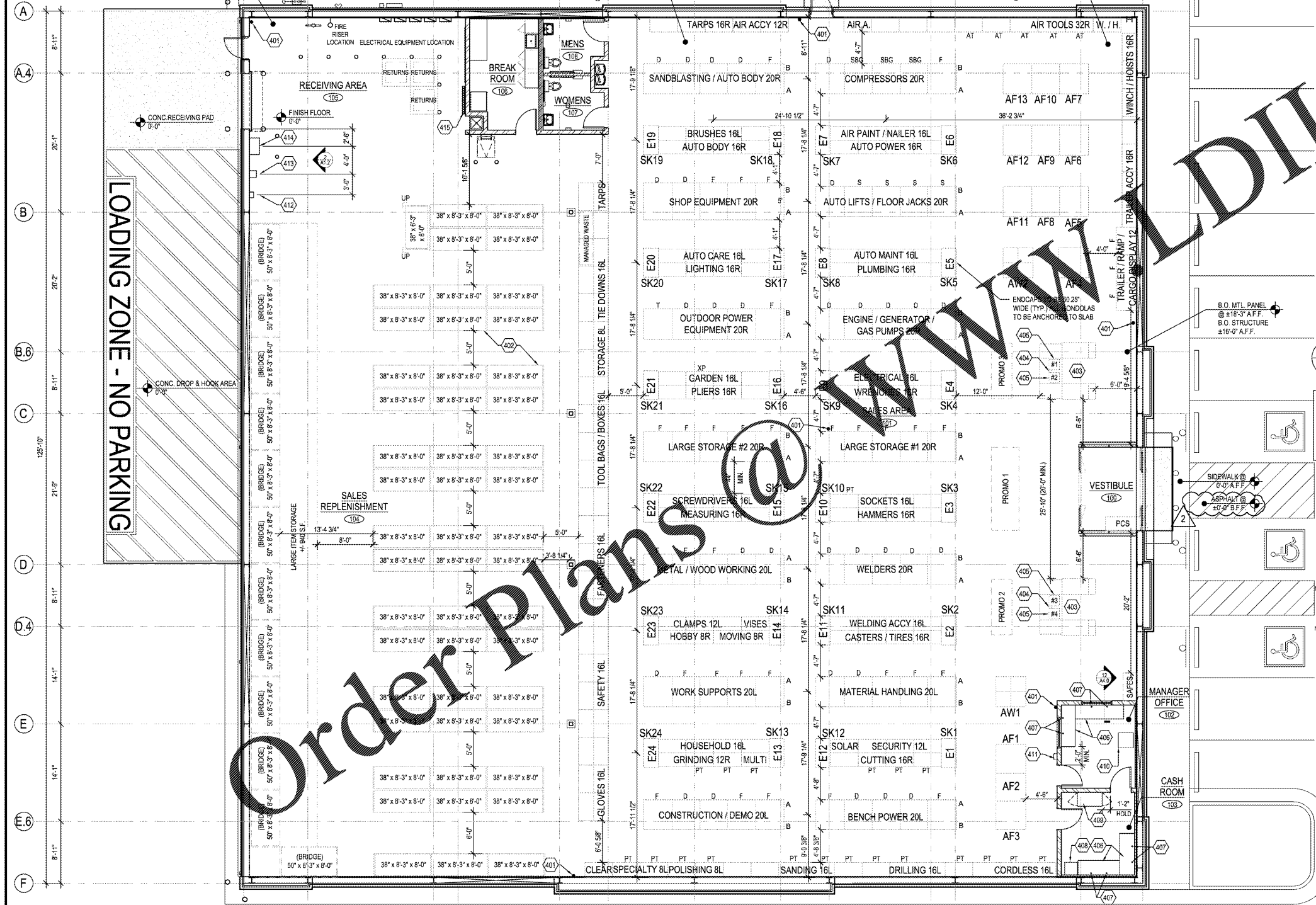
CLEARANCE HEIGHTS CHART

NOTE TO DESIGNER: BOLD HEIGHTS ARE CRITICAL. MINIMUM CLEARANCES

AREA	CLEARANCE	HIGH POINT	LOW POINT
SALES	BOTTOM OF DECK	±19'-5 1/2" A.F.F.	±17'-10" A.F.F.
	BOTTOM OF STRUCTURE	±19'-11 7/8" A.F.F.	±14'-9 1/4" A.F.F.
REPLENISHMENT	BOTTOM OF DECK	±17'-10" A.F.F.	±16'-9 1/2" A.F.F.
	BOTTOM OF STRUCTURE	±14'-9 1/4" A.F.F.	±14'-0" A.F.F.
RECEIVING AREA	CLEARANCE @ O.H. DOOR	±14'-0" A.F.F.	

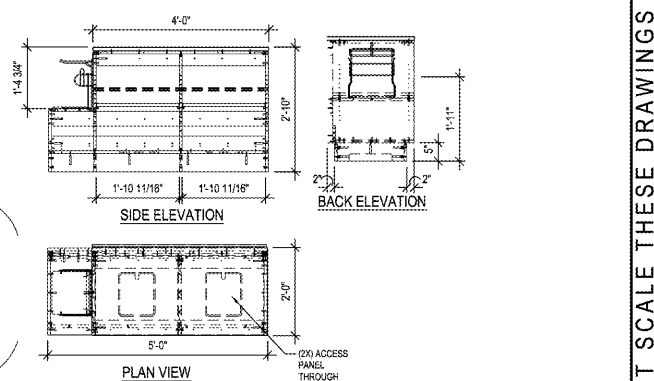
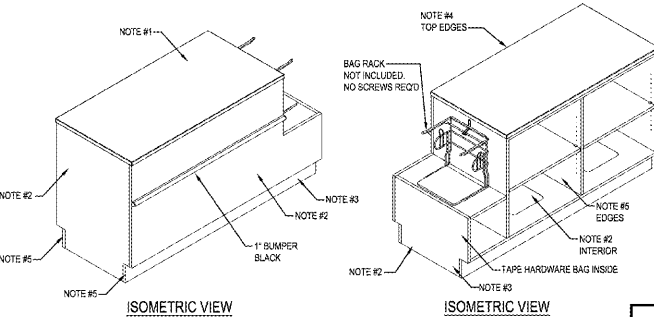
FIXTURE PLAN KEY

SYMBOL	DESCRIPTION	HEIGHT
AW	ADVERTISING 4 WAY	4'-0" A.F.F.
AF	ADVERTISING FLAT	0'-0" A.F.F.
G	GONDOLA	7'-0" A.F.F. (Consider all unmarked fixtures to be Gondola's)
D	DOUBLE TABLE	1'-8" A.F.F. - 3'-6" A.F.F.
S	SINGLE TABLE	8" A.F.F.
F	FIXTURE AT CASH WRAP	0'-0" A.F.F.
EP	EXTENDED POWER MAT	7'-0" A.F.F.
PA	POWER TO DISPLAY	7'-0" A.F.F.
AP	AIR LOCAL DISPLAY	7'-0" A.F.F.
M	MOTOR PUMP RACK	7'-0" A.F.F.
B	BATTERY LOCK ON DISPLAY FLAT	---
UP	UPRIGHT PROTECTOR	---



2 A1.2 FORKLIIFT CHARGER AND EYEWASH STATION ELEV.
SCALE: 1/2" = 1'-0"

- NOTES:
- MATERIAL: 27.0mm [1"] LAID UP PARTICLE BOARD COLOR TO MATCH PIONITE IVORY KID LG 110 1 SIDE; BACKER 1 SIDE (10-930-1400).
 - MATERIAL: 19.2mm [3/4"] MELAMINE PARTICLE BOARD COLOR TO MATCH FINDER ALMOND 2 SIDES (10-910-0381).
 - MATERIAL: 19.2mm [3/4"] MELAMINE PARTICLE BOARD COLOR TO MATCH BLACK 2 SIDES (10-910-0001).
 - MATERIAL: 3.2mm x 1.5" [1/8" x 1 1/2"] IVORY KID LG 110 PVC (90-100-0625).
 - MATERIAL: 0.5mm x 15/16" ALMOND PVC (90-100-0022).



1 A1.2 ACCESSIBLE TRANSACTION COUNTER
SCALE: 1/2" = 1'-0"

Order Plans @ www.dillme.com

ARCHITECTS, INC.
17710 Detroit Avenue, Lakewood, Ohio 44107
Phone (216) 521-5134 Fax (216) 521-14824
www.architectsinc.com

HARBOR FREIGHT TOOLS

705 WYATT ROAD NORTHWEST
CLEVELAND, TN 37312

DO NOT SCALE THESE DRAWINGS

#	DATE	TYPE	BULLETIN #
1	07/22/20		
2			
3			
4			
5			
6			
7			
8			
9			
10			

FIXTURE PLAN

DATE: 06/02/20
JOB NO.: 19155

A1.2

SHEET NO.

FIXTURE PLAN
SCALE 1/8" = 1'-0"