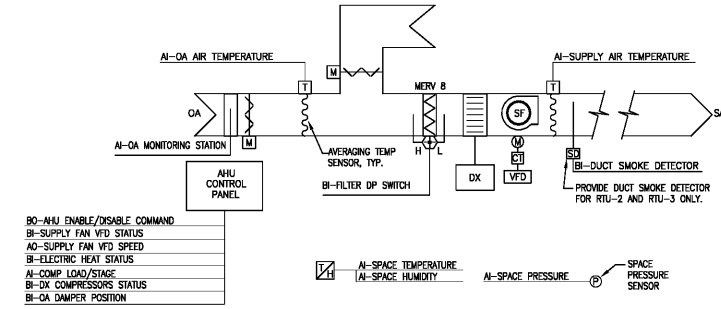


ROOF TOP UNIT CONTROLS (RTU-1 TO RTU-3)

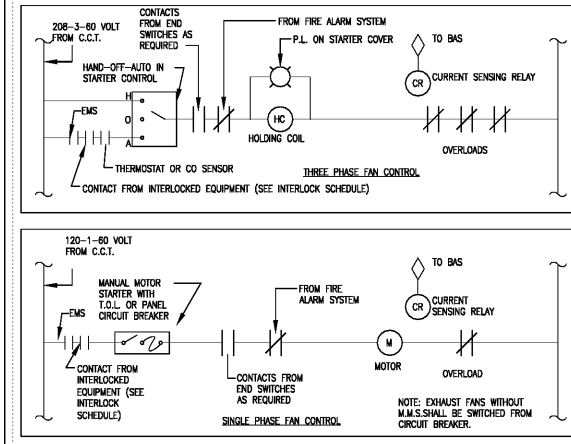


POINTS LIST - RTU table with columns for Point Description, Physical Points (Analog/Binary Input/Output), and Virtual Points (Alarm/Display). Includes notes and sequence of operation.

SEQUENCE OF OPERATION
THE SYSTEM SHALL BE MONITORED, ENABLED/DISABLED THROUGH THE BUILDING AUTOMATION SYSTEM (BAS) AS DESCRIBED HEREIN.

Notes:
1. CONTROL DAMPERS ARE NORMALLY CLOSED (NC) WHEN SYSTEM IS DISABLED.

CONTROLS - 1 & 3 PHASE MOTOR STARTERS



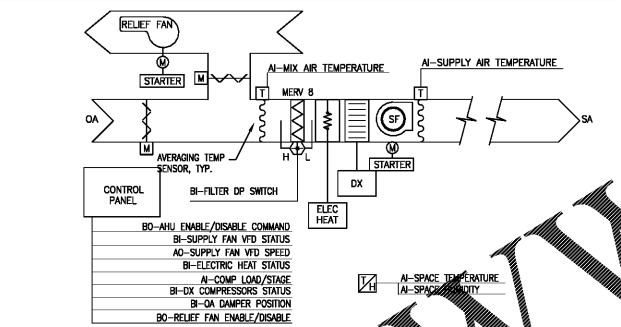
INTERLOCK SCHEDULE

Table mapping units (EF-1,2,3,4,5; UH-1; DSS-1; AC-1 to AC-17; RTU-1, RTU-2, RTU-3) to interlocks with occupancy schedule, thermostat, and humidity/temperature setpoints.

CONTROL SYSTEM NOTES

- 1. CONTROLS CONTRACTOR TO PROVIDE COMPLETE STAND-ALONE DIRECT DIGITAL CONTROL (DDC) BUILDING AUTOMATION SYSTEM (BAS)...
2. THE CONTROLS SYSTEM SHALL INCLUDE ALL HARDWARE, SOFTWARE, AND PROGRAMS AS REQUIRED TO ACHIEVE HVAC SEQUENCE OF OPERATION...

CLASSROOM AC UNIT CONTROLS (AC-1 TO AC-17)



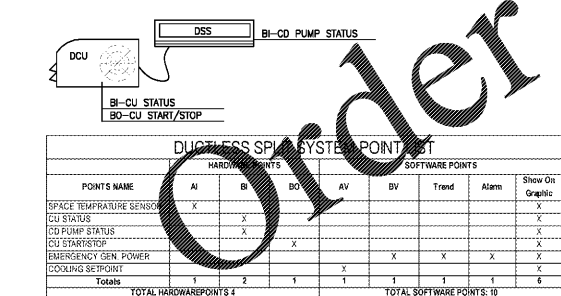
POINTS LIST - AC table with columns for Point Description, Physical Points (Analog/Binary Input/Output), and Virtual Points (Alarm/Display). Includes notes and sequence of operation.

Notes:
1. CONTROL DAMPERS ARE NORMALLY CLOSED (NC) WHEN SYSTEM IS DISABLED.

SEQUENCE OF OPERATION
THE SYSTEM SHALL BE MONITORED, ENABLED/DISABLED THROUGH THE BUILDING AUTOMATION SYSTEM (BAS) AS DESCRIBED HEREIN.

COOLING MODE
THE AHU SHALL ENERGIZE / DE-ENERGIZE AND LOAD/STAGE THE COMPRESSOR(S) TO MAINTAIN A SUPPLY AIR TEMPERATURE OF 53°F (ADJUSTABLE).

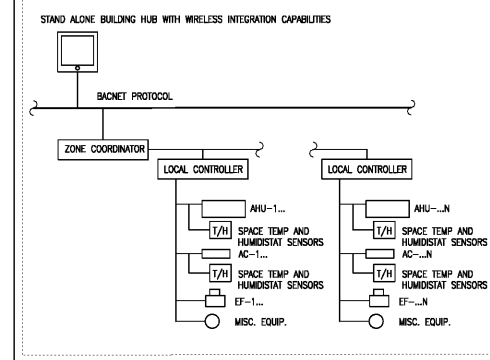
DUCT LESS SPLIT CONTROLS



POINTS LIST for ductless split system with columns for Point Name, Hardware Points (AI, BI, DO, AV, BV, Trend, Alarm), and Software Points (Show On, Graphic).

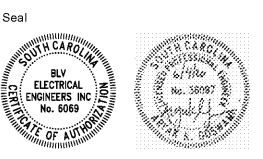
DUCTLESS SPLIT SYSTEM - SEQUENCE OF OPERATIONS
THE DUCTLESS SPLIT SYSTEM SHALL RUN TO SATISFY THE SPACE TEMPERATURE SENSOR SET-POINT OF 72°F (ADJ.).

CONTROLS SYSTEMS ARCHITECTURE



Brownstone logo and address: 1310 LADY STREET, SUITE 204, COLUMBIA, SOUTH CAROLINA 29207

All rights reserved. This drawing and the design shown thereon are copyright as prescribed by the laws of the United States and are the property of Brownstone Design.



Client: ALLENDALE-FAIRFAX COUNTY SCHOOL DISTRICT
Project: ALLENDALE PRIMARY SCHOOL

Issued For: 90% PRICING SET MARCH 16, 2020

Key Plan table with columns: No., Item, Date



MECHANICAL CONTROLS

M-701

Drawn By: AKG
Checked By: Checker