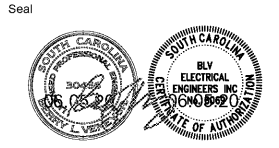


All rights reserved. This drawing and the design shown thereon are copyright as prescribed by the laws of the United States and are the property of Brownstone Design. Anyone duplicating, reproducing or causing to be reproduced the whole or part of these drawings or the design thereon without written permission of the Architect and/or Brownstone Design will be subject to legal action.



Client
ALLENDALE-FAIRFAX COUNTY SCHOOL DISTRICT

Project
ALLENDALE PRIMARY SCHOOL

Issued For
 90% PRICING SET
 MARCH 16, 2020

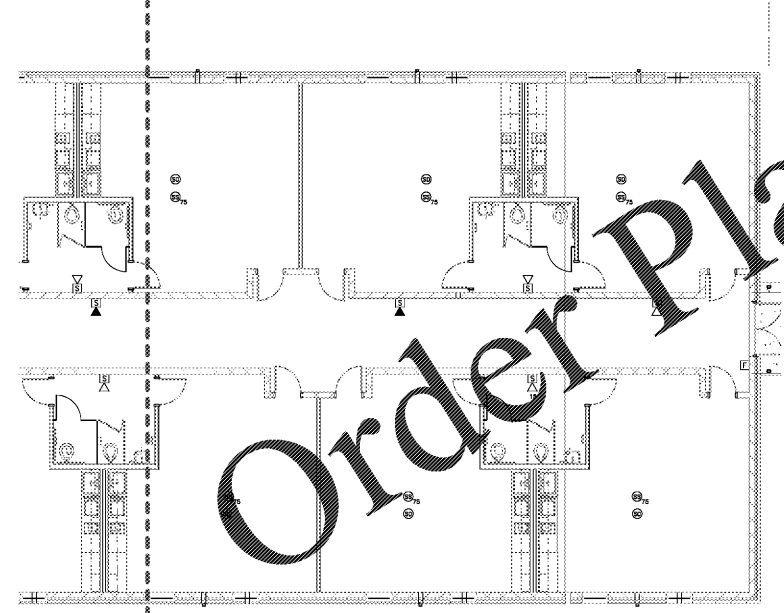
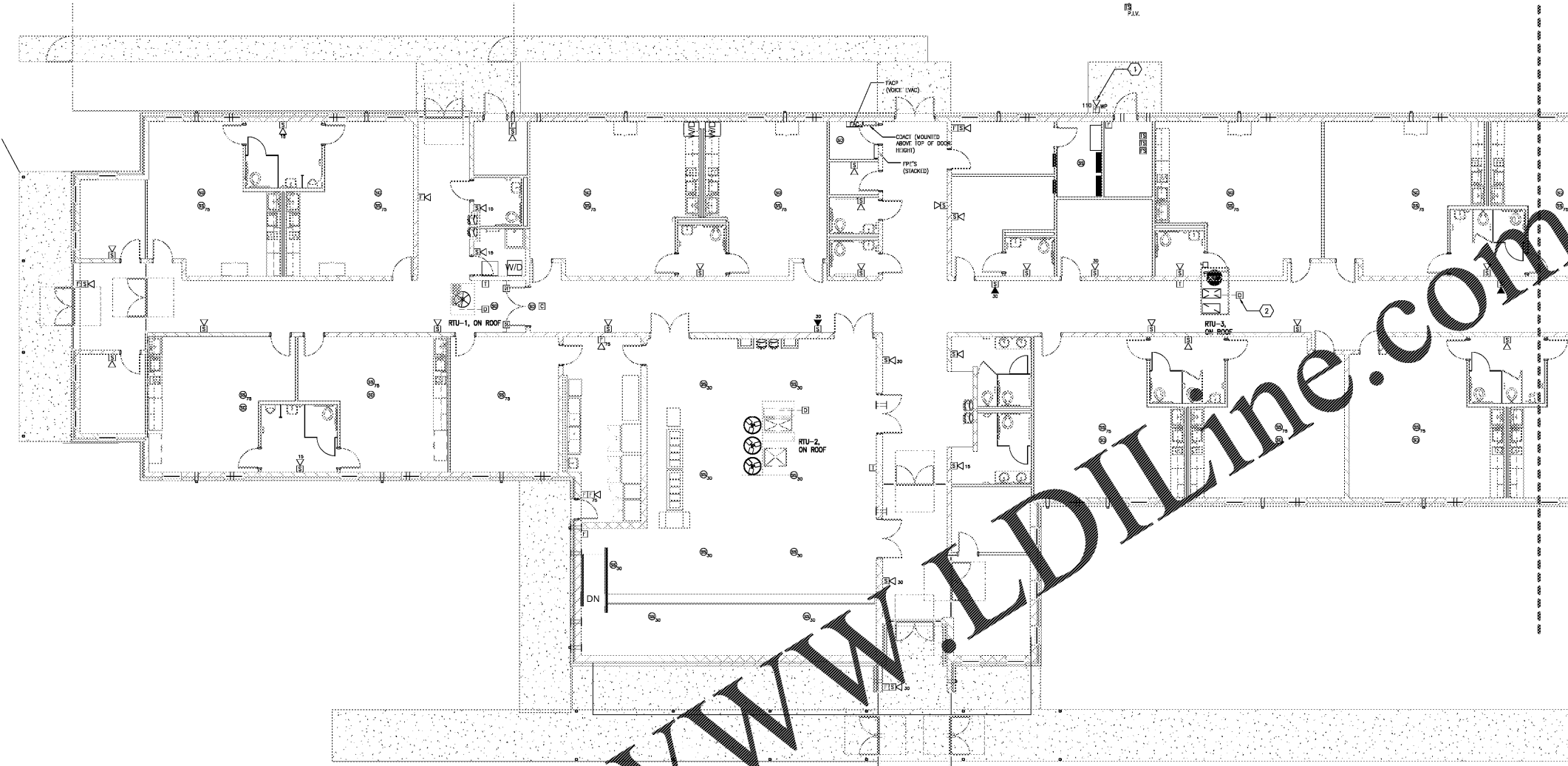
No.	Item	Date

Key Plan

Sheet Title
FIRE ALARM PLAN AND RISER DIAGRAM

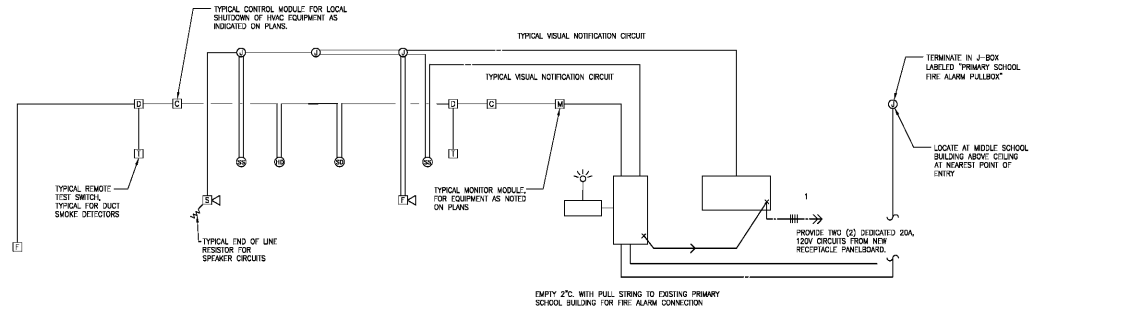
E-303

Drawn By: jlb
 Checked By: blv



- FIRE ALARM GENERAL NOTES**
- THE INTENT OF THIS FIRE ALARM PLAN IS TO SHOW THE LOCATION OF ALL FIRE ALARM DEVICES AND EQUIPMENT LOCATIONS. SEE SPECIFICATION 28 (1117) FOR WIRING AND CONNECTIONS.
 - ALL FIRE ALARM DEVICES SHALL BE INSTALLED IN ACCORDANCE WITH DIVISION 28 SPECIFICATIONS.
 - ALL FIRE ALARM DEVICES SHALL BE COMPATIBLE WITH DEVICES TO BE INSTALLED AND SHALL COMPLY WITH THE MANUFACTURER'S PUBLISHED REQUIREMENTS.
 - STROBE LIGHTS SHALL BE 15CD UNLESS OTHERWISE INDICATED ON THE PLANS.
 - ADJUST ALL LOCATIONS OF NOTIFICATION APPLIANCES AS REQUIRED TO AVOID CONFLICTS WITH WINDOWS, PROJECTOR SCREENS, OR OTHER SCHOOL CASEWORK, ETC.
 - ALL FIRE ALARM DEVICES SHALL DISPLAY PER ACTUAL UNIT LABELS. FACT LABELING OF DUCT DETECTORS SHALL INCLUDE SUPPLY OR RETURN DESIGNATION.
 - INDIVIDUAL FIRE PANEL SYMBOLS SHOWN ON THE PLANS REPRESENT AS MANY FIRE PANELS AS ARE NECESSARY AT EACH PANEL LOCATION FOR SYSTEM POWER.
 - LOCATE SMOKE DETECTORS AT FIRE ALARM PANELS WITHIN 5'-0" OF PANEL.
 - SMOKE DETECTORS AT SMOKE DOORS SHALL BE LOCATED IN STRICT ACCORDANCE WITH 2010 NFPA-72, FIGURE 17.7.2.3.2.2(1)(A) SECTION. E-CONNECT ALL SMOKE DOORS THROUGH LOCAL CONTROL MODULE PROGRAM DOOR RELEASE BASED ON ALARM BY THE LOCAL SMOKE DETECTORS ON EITHER SIDE OF THE DOORWAY.
 - SMOKE DETECTOR LOCATIONS SHALL BE ADJUSTED AS REQUIRED SUCH THAT THEY ARE NOT LOCATED WITHIN 3'-0" OF ANY HVAC SUPPLY OR RETURN AIR ORIFICE.
 - INSTALL MANUAL PULL STATIONS WITHIN 5'-0" OF EXIST DOORWAYS.
 - PROVIDE DUCT SMOKE DETECTORS WHERE SHOWN ON THE HVAC DRAWINGS. PROVIDE A REMOTE ALARM INDICATOR WITH TEST SWITCH FOR ALL DUCT DETECTORS THAT ARE CONCEALED ABOVE FINISHED CEILING. CEILING MOUNT ALARM INDICATORS DIRECTLY BELOW CONCEALED DETECTOR LOCATIONS, EXCEPT IN AREAS WITH CEILING HEIGHTS ABOVE 12', SHALL MOUNT TEST STATIONS 54" HAT TO TOP OF BOX. PROVIDE ENGRAVED LABELS ON ALL ALARM INDICATORS WITH HVAC UNIT DESIGNATIONS. PROVIDE A CONTROL MODULE WITHIN 18" OF EACH HVAC UNIT'S CONTROLLER, UNLESS OTHERWISE NOTED ON THE PLANS. PROGRAM AIR HANDLER SHUTDOWN FUNCTIONS FOR EACH AIR HANDLER BASED ON ALARM BY IT'S RESPECTIVE DUCT DETECTOR(S).
 - OUTDOOR NOTIFICATION APPLIANCES UNITS SHALL BE U.L. LISTED AND INSTALLED FOR WEATHERPROOF APPLICATION.
 - LOCATE C-MODULES AND M-MODULES WITHIN 18" OF THE EQUIPMENT BEING CONTROLLED OR MONITORED.

- FIRE ALARM PLAN KEY NOTES**
- WIRE AND CONFIGURE A/V DEVICE DIRECTLY THROUGH FLOW SWITCH CONTACTS TO ALARM ONLY UPON ANY SPRINKLER WATER FLOW ALARM ASSOCIATED WITH LOCAL RISER ROOM. PROVIDE SUPPLEMENTARY SIGNAL FROM THE ALARM SYSTEM.
 - PROGRAM HVAC SHUTDOWN UPON ALARM BY DUCT DETECTOR ASSOCIATED WITH HVAC UNIT.



- FIRE ALARM RISER GENERAL NOTES**
- PANELS SHALL BE LOCATED WHERE SHOWN ON THE FLOOR PLAN.
 - THE CONTROLLER SHALL PROVIDE AS MANY FIRE PANELS AS REQUIRED AT EACH LOCATION FOR ACTUAL STROBE CIRCUIT LOADS.
 - ALL CONDUITS SHALL BE 3/4" MINIMUM OR LARGER AS REQUIRED FOR OBTAINING OF SYSTEM.
 - DUCT DETECTORS SHALL BE FURNISHED AND CONNECTED TO THE ALARM SYSTEM BY DIVISION 28. INSTALLATION INTO DUCT WORK SHALL BE BY DIVISION 23.

- FIRE ALARM RISER KEY NOTES**
- CIRCUIT BREAKERS SHALL BE PAINTED RED AND FURNISHED WITH LOCK-OUT HASP.

5/14/2020 8:55:07 PM