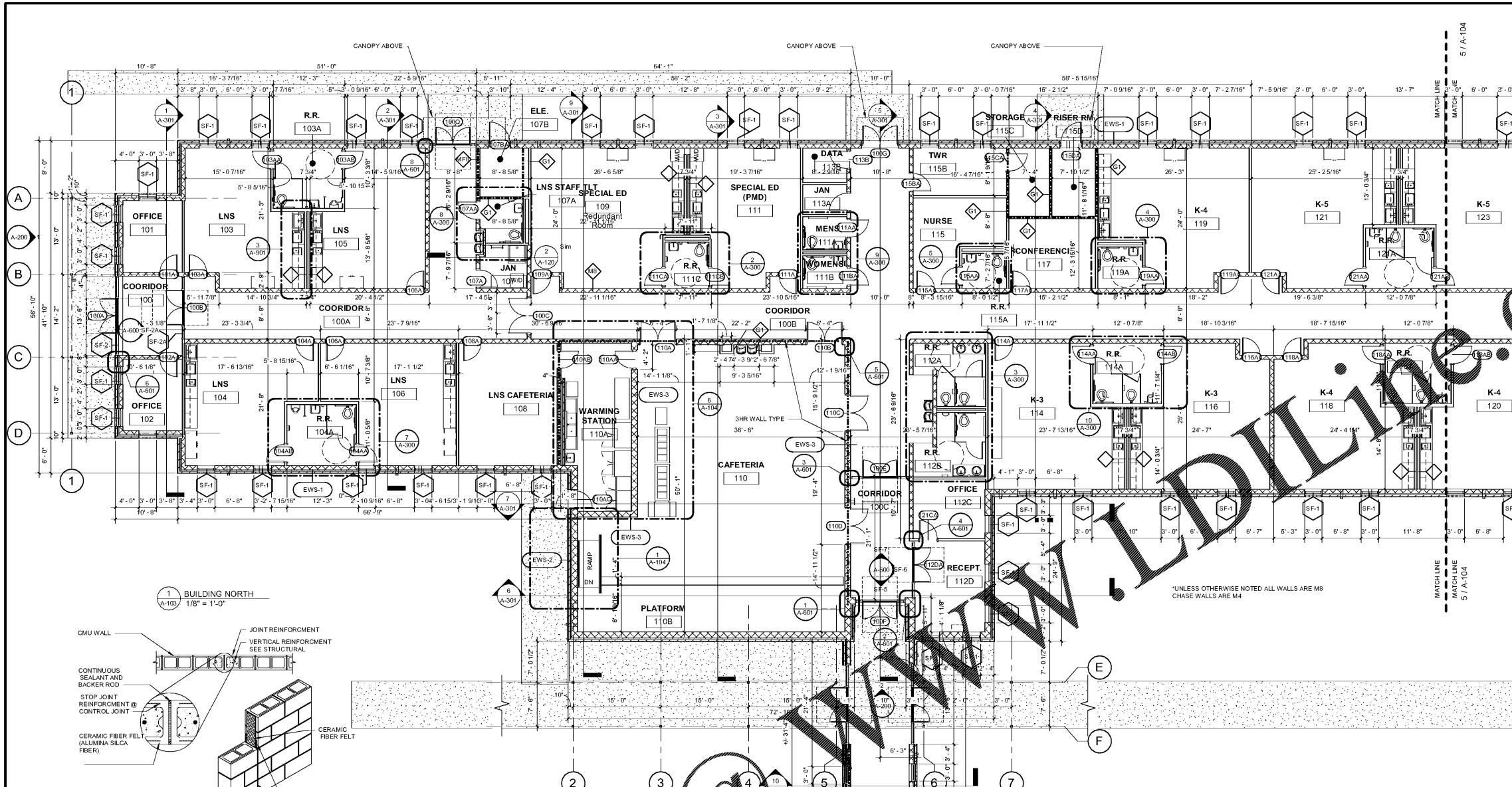
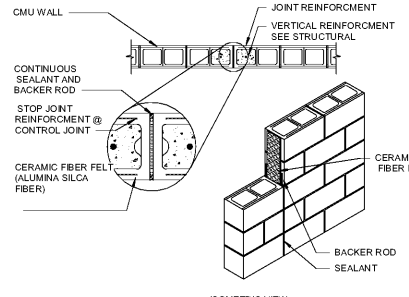


GENERAL NOTES

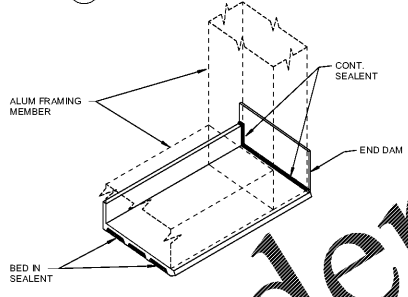
- 1. THESE DOCUMENTS INDICATE MATERIALS AND METHODS OF CONSTRUCTION TO SET THE STANDARD QUALITY AND PERFORMANCE. OTHER MATERIALS MAY BE CONSIDERED FOR ACCEPTANCE BY THE ARCHITECT/OWNER. ...



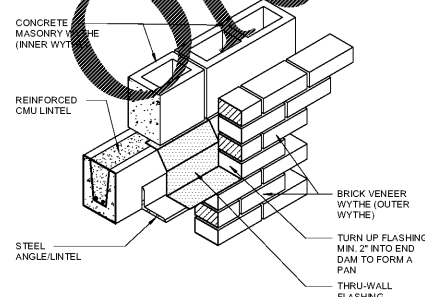
1 BUILDING NORTH 1/8" = 1'-0"



3 CONTROL JOINT DETAIL 1/2" = 1'-0"



5 TYPICAL END DAM 1 1/2" = 1'-0"



6 FLASHING AT LINTELS 1 1/2" = 1'-0"

BROWNSTONE
1310 LADY STREET SUITE 204 COLUMBIA, SOUTH CAROLINA 29201

ALL RIGHTS RESERVED. THIS DRAWING AND THE DESIGN SHOWN THEREON ARE COPYRIGHT AS DESCRIBED BY THE LAWS OF THE UNITED STATES AND ARE THE PROPERTY OF BROWNSTONE DESIGN. ANYONE DUPLICATING, REPRODUCING OR CAUSING TO BE REPRODUCED THE WHOLE OR PART OF THESE DRAWINGS OR THE DESIGN THEREON WITHOUT PERMISSION OF THE ARCHITECT AND/OR BROWNSTONE DESIGN WILL BE SUBJECT TO LEGAL ACTION.

Client
ALLENDALE-FAIRFAX
COUNTY SCHOOL
DISTRICT

Project
ALLENDALE PRIMARY
SCHOOL

Issued For
*OSF REVIEW SET

Table with 3 columns: No., Item, Date. The table is currently empty.

Key Plan

Sheet
ENLARGED FLOOR
PLAN

A-103

Drawn By Author
Checked By Checker