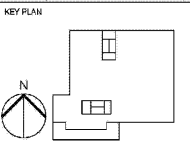


MARRIOTT SAWGRASS CABANA CLUB

DATE: 05/22/2020
Professional of Record
Andrew D. Newman, P.E.
License No. 65543
Howe Engineers, Inc.
101 Longwater Circle, Suite 203
Norwell, MA 02061
PHONE: 781.676.3500
Certificate of Authorization: 28289



This form has been electronically signed and sealed by the licensee professional named above, using a digital signature and seal. Printed copies of this document are not considered signed and sealed, and the signature must be verified on e-records copies.



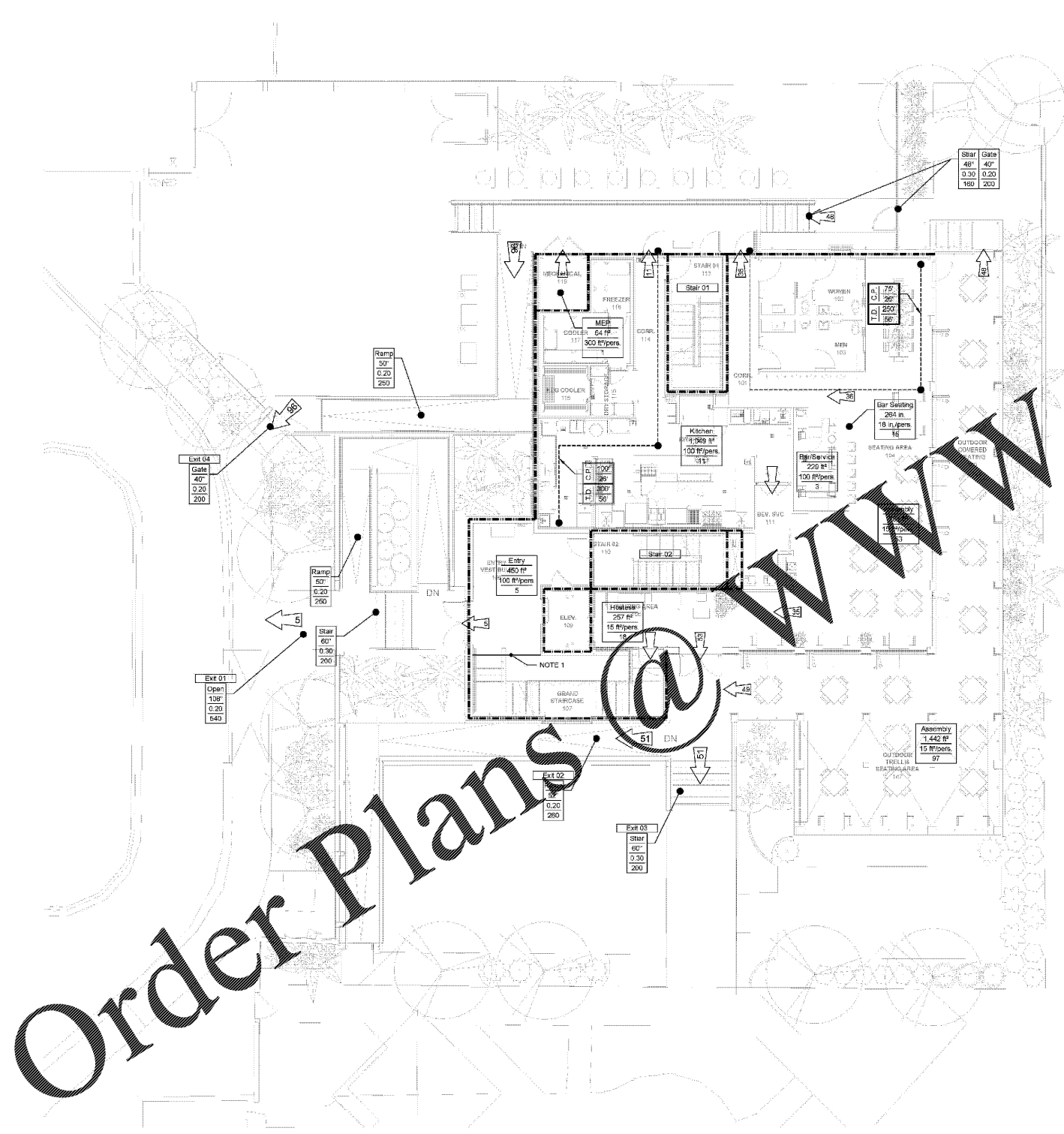
NO.	DESCRIPTION	DATE

HKS PROJECT NUMBER

DATE: 05/22/2020
SHEET: PERMIT SET

SHEET TITLE: LIFE SAFETY - LEVEL 01 PLAN

SHEET NO.: LS1.01



GRAPHIC LEGEND

- Abc - Egress Component
- # - Clear Width
- # - Egress Capacity Factor
- # - Egress Capacity
- Use
- Area (sqft)
- Occupant Load Factor
- Occupant Load
- Occupant Load (fixed Seats Or Accessible)
- Occupant Load (standing Room)
- Occupant Flow (downside)
- Occupant Flow (upside)
- Allowable Common Path of Travel
- Provided Common Path of Travel
- Total Allowable Travel Distance
- Total Provided Travel Distance (including common path of travel)
- Travel Distance
- Common Path
- 1-Hour Fire Bar
- 1-Hour Smoke Bar
- 1-Hour Smoke Partition
- 1-Hour Fire Partition
- 1-Hour Fire and Smoke Partition

Occupant Load Summary - Level 1

Location of Space	Factor	Occupant Load
Assembly (Un-Concentrated)	1/15 net	168
Assembly (Bar Seating)	18 in./1 occ.	15
Business / Office	1/100 gross	9
Kitchen	1/100 gross	11
MEP	1/800 gross	1
TOTAL		203

Exit Capacity - Level 1

Exit	Stair			Door/Ramp/Opening			Limiting Capacity	Actual Use
	Width*	Factor	Cap.	Width*	Factor	Cap.		
Exit 01	60"	0.30	200	50"	0.20	250	450	5
Exit 02	-	-	-	50"	0.20	250	250	51
Exit 03	60"	0.30	200	-	-	-	20	51
Exit 04	-	-	-	40"	0.20	200	200	96
							TOTAL	203

*Clear width as defined by the building code

Stair Discharge Summary Table

Stair	Maximum Occupant Load	Capacity Factor	Calculated Required Width	Minimum Required Width	Provided Width
Stair 01	93	0.20	18.6	32	34
Stair 02	99	0.20	19.8	32	34

01 LIFE SAFETY - LEVEL 01
1/8" = 1'-0"

