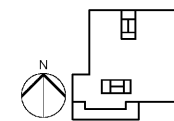


MARRIOTT SAWGRASS CABANA CLUB

KEY PLAN



REVISION

NO.	DESCRIPTION	DATE

HKS PROJECT NUMBER
Project Number
DATE
05/22/20
ISSUE
PERMIT SET

SHEET TITLE:
**LEVEL 1 -
FOODSERVICE
EQUIPMENT PLAN**
SHEET NO.

FS1.1

GENERAL NOTES

- THIS DRAWING SHALL BE USED AS AN INSTRUMENT OF SERVICE AND REFERENCE FOR ALL OTHER TRADES AND CONTRACTORS. ALL TRADES SHALL VERIFY THE INFORMATION AS SHOWN ON THESE PLANS. FOR SPECIFIC CONNECTION INFORMATION, REFER TO THE ARCHITECT AND/OR CONTRACTOR'S DRAWINGS.
- DIMENSIONS AND REQUIREMENTS FOR ALL EXISTING EQUIPMENT AND EQUIPMENT PROVIDED BY OTHERS MUST BE VERIFIED.
- ALL APPLICABLE NATIONAL, STATE, AND LOCAL CODES SHALL APPLY.
- ALL DIMENSIONS AND SYMBOLS ON THESE PLANS ARE BASED ON FINISHED WALL AND FLOOR DIMENSIONS. ANY DISCREPANCIES BETWEEN THESE DRAWINGS AND ACTUAL OR INTENDED CONDITIONS IN THE FIELD SHOULD BE REPORTED TO INNOVATIVE FOODSERVICE DESIGN TEAM IMMEDIATELY.
- ARCHITECT TO LOCATE, GENERAL CONTRACTOR TO PROVIDE ALL ROOF BUILDING PINE TRAKIONS STANDS (UNLESS SPECIFIED TO BE PROVIDED BY KECI) AND CURBS FOR EXHAUST/SUPPLY AIR SYSTEMS AND REMOVE COMPRESSORS.
- ARCHITECT TO LOCATE ALL REMOTE COMPRESSORS AND CONDENSERS IN ACCORDANCE WITH FACTORY INSTRUCTIONS.
- UNLESS OTHERWISE NOTED, ALL DIMENSIONS SHOWN ON THIS PLAN ARE FROM THE FINISHED FLOOR, UNLESS OTHERWISE NOTED TO BE FROM THE ROOF.
- ARCHITECT TO LOCATE GENERAL CONTRACTOR TO PROVIDE BUILDING ACCESS PANELS REQUIRED FOR THE EQUIPMENT.
- GENERAL CONTRACTOR TO PROVIDE ALL NECESSARY FIRE PROTECTIVE MEASURES AND PENETRATIONS PER LOCAL CODES.

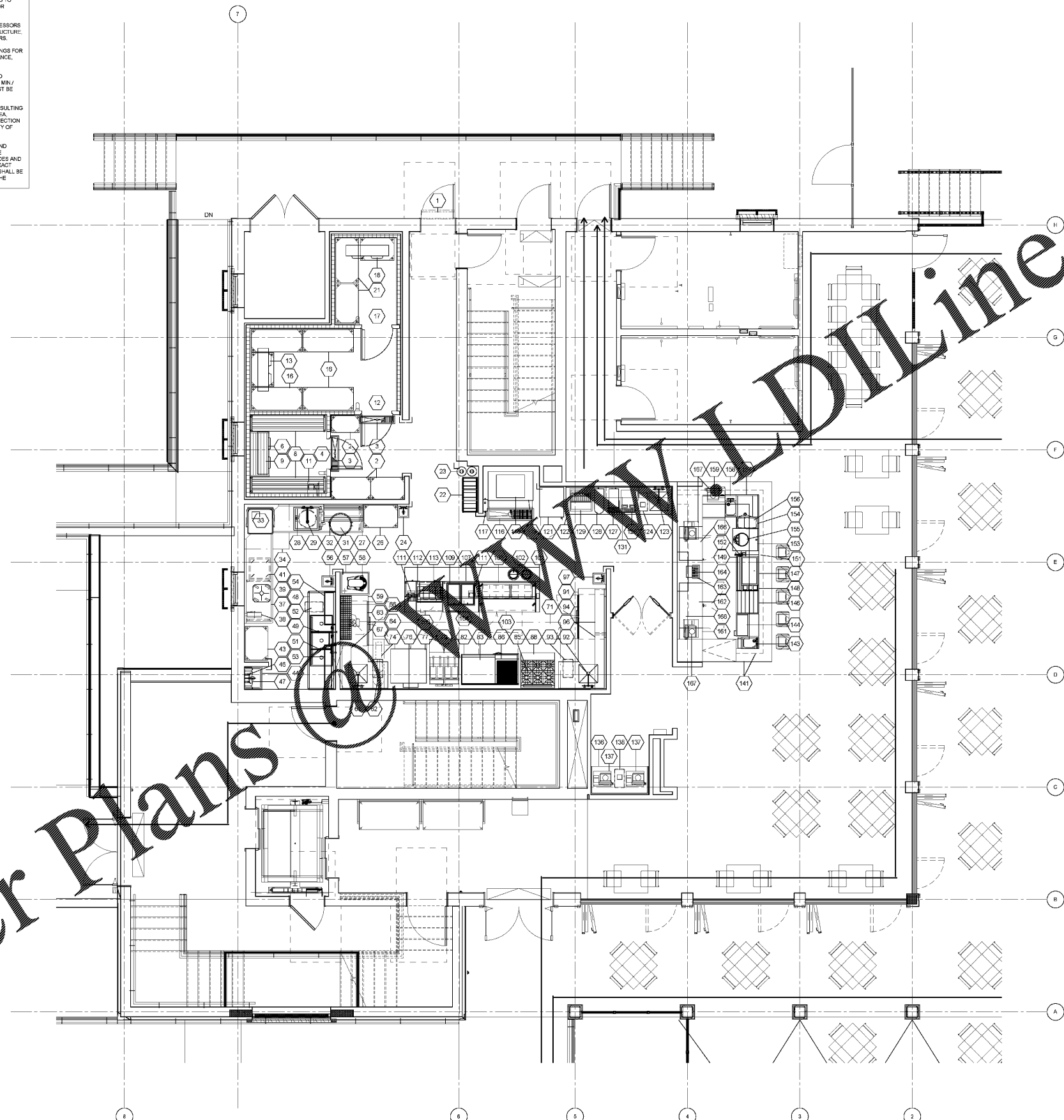
NOTE: REFER TO SHEETS FS1.2 AND FS1.3 FOR EQUIPMENT SCHEDULE

REMOTE COMPRESSORS AND EXHAUST/SUPPLY FANS

- THESE NOTES APPLY TO MULTI-SYSTEM COMPRESSOR PACKS AS WELL AS INDIVIDUAL COMPRESSORS AND CONDENSERS.
- EXACT/BEST LOCATION OF COMPRESSORS AND FANS ARE TO BE DETERMINED BY ARCHITECT/MECHANICAL ENGINEER. FREE & EASY ACCESS INTO AREA INSTALLATION AND MAINTENANCE MUST BE PROVIDED BY OTHERS. MINIMUM CLEARANCE REQUIREMENTS MUST BE MAINTAINED.
 - SUFFICIENT AIR CHANGES MUST BE PROVIDED AT COMPRESSOR LOCATIONS TO ALLOW ADEQUATE AIR CIRCULATION FOR WATER COOLED OR AIR COOLED UNITS.
 - STRUCTURAL SUPPORT FOR COMPRESSORS AND OR FANS ON ROOF OR REUSE STRUCTURE TO BE DESIGNED & PROVIDED BY OTHERS.
 - SEE MANUFACTURER'S SHOP DRAWINGS FOR DETAILED REQUIREMENTS FOR CLEARANCE, MECHANICAL, PLUMBING & ELECTRICAL REQUIREMENTS. FOR WATER COOLED COMPRESSORS, STRICT ADHERENCE TO MANUFACTURER'S REQUIREMENTS FOR MIN/ MAX WATER TEMP AND PRESSURE MUST BE MAINTAINED.
 - ASHRAE CALCULATIONS AND ANY RESULTING REQUIREMENTS FOR COMPRESSOR AREA, PIPING CHASES AND REFRIGERANT DETECTION SYSTEMS SHALL BE THE RESPONSIBILITY OF OTHERS.
 - ALL REFRIGERANT PIPING CHASES AND BUILDING PENETRATIONS SHALL BE THE RESPONSIBILITY OF THE BUILDING TRADES AND TO COMPLY WITH ALL LOCAL CODES. EXACT LINE RUNS OF REFRIGERANT PIPING SHALL BE DETERMINED IN COORDINATION WITH THE REFRIGERATION INSTALLER.

LEVEL 1 - COMPRESSORS AND FANS

SCALE: 1/4" = 1'-0"



LEVEL 1 - FOODSERVICE EQUIPMENT PLAN

SCALE: 1/4" = 1'-0"

Order Plans @ www.wildline.com

**INNOVATIVE
FOODSERVICE
DESIGN TEAM**

MAIN OFFICE:
11101 North 46th Street
Tampa, FL 33617
V: 813.985.8870 F: 813.985.6080

THIS DRAWING AND THE RELATED INFORMATION CONTAINED HEREIN IS THE PROPERTY OF INNOVATIVE FOODSERVICE DESIGN TEAM AND SHALL NOT BE USED ON ANY WORK, IN WHOLE OR IN PART, EXCEPT BY WRITTEN AGREEMENT WITH INNOVATIVE FOODSERVICE DESIGN TEAM. UNAUTHORIZED REPRODUCTION OR USE OF THIS DRAWING OR ANY PORTION OF THIS DRAWING IS STRICTLY PROHIBITED. ALL RIGHTS RESERVED UNDER INTERNATIONAL COPYRIGHT LAWS SHALL APPLY. THE DRAWINGS ARE INSTRUMENTS OF SERVICE AND REFERENCES FOR OTHER TRADES. ALL FIELD DIMENSIONS AND SITE CONDITIONS MUST BE VERIFIED. UNLESS OTHERWISE NOTED, ALL UTILITY REQUIREMENTS MUST BE VERIFIED WITH ACTUAL EQUIPMENT PROVIDED. REFER TO ARCHITECTURAL AND/OR ENGINEERING DRAWINGS FOR PANEL SIZES AND LOCATIONS OF FLOOR DRAINS, FLOOR SINKS, MECHANICAL EQUIPMENT, GREASE TRAPS, AND OTHER SIMILAR ITEMS ON REVISIONS. ALL DIMENSIONS AND LOCATIONS OF EQUIPMENT SHALL BE BY OTHERS AND THE SCHEDULE FROM THE FOODSERVICE DESIGN TEAM. CONTRACTORS SCOPE OF WORK, MECHANICAL EQUIPMENT AND CONTRACTOR SHALL BE BY OTHERS. UNLESS OTHERWISE NOTED ON DRAWINGS OR IN THE WRITTEN SPECIFICATIONS, THE SCALE OF THIS DRAWING TO ENSURE ACCURACY AS PLOTTED OR REPRODUCTION AT A DIFFERING SCALE THAN THE SCALE SHOWN ON IT LEAD TO DIMENSIONAL INACCURACY.

© COPYRIGHT 2018
INNOVATIVE FOODSERVICE DESIGN TEAM
ALL RIGHTS RESERVED