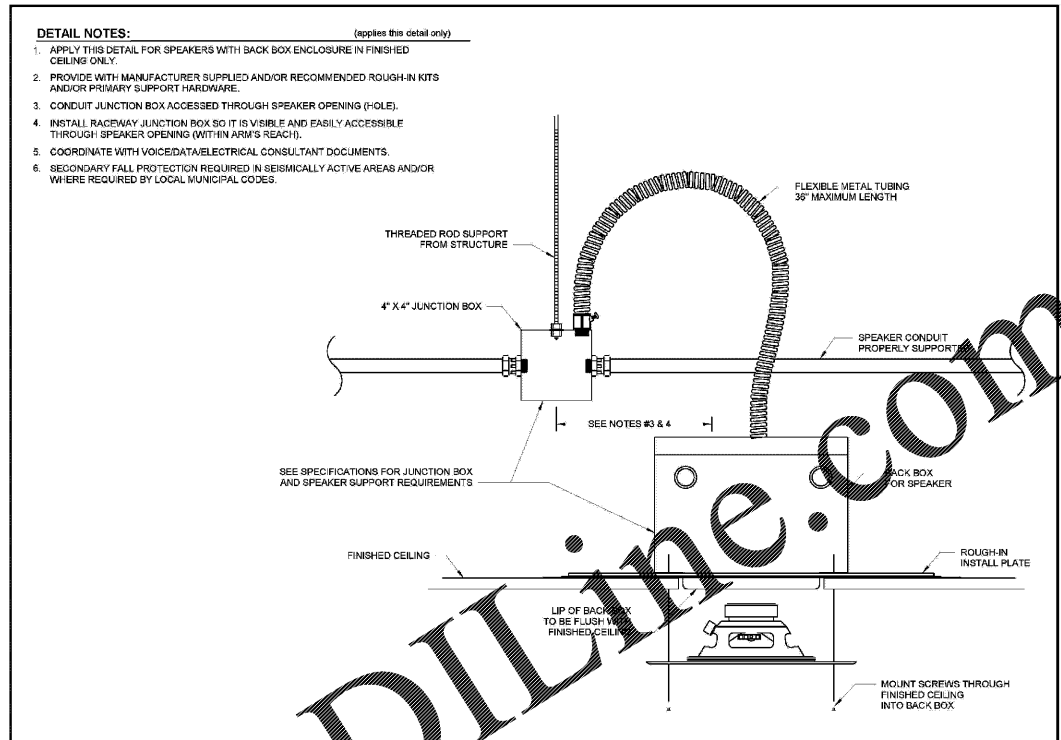
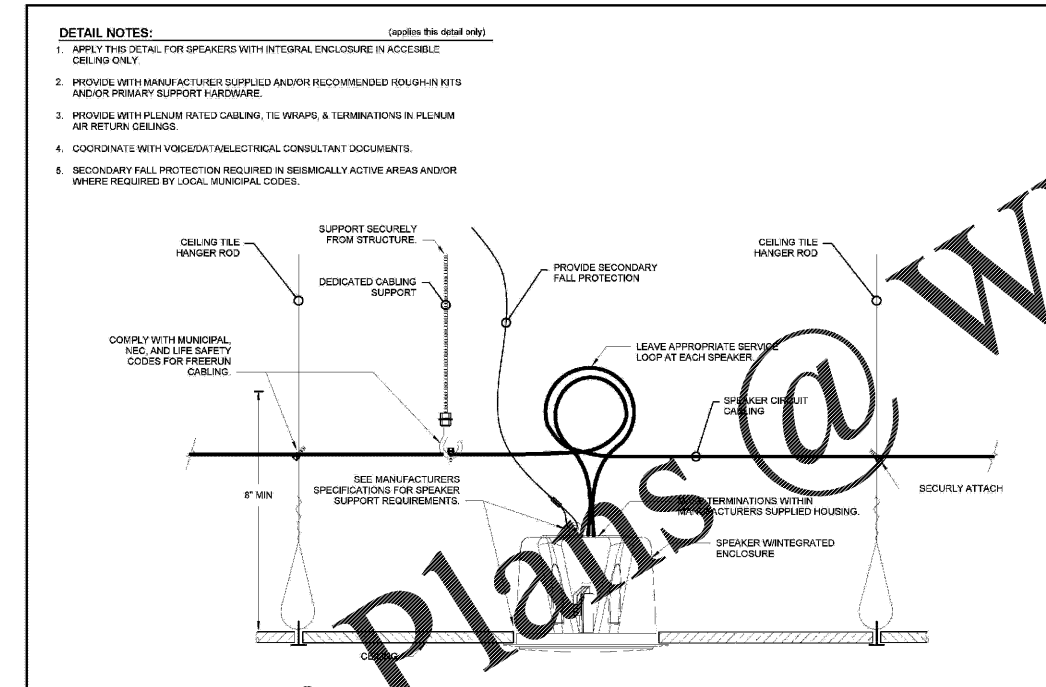


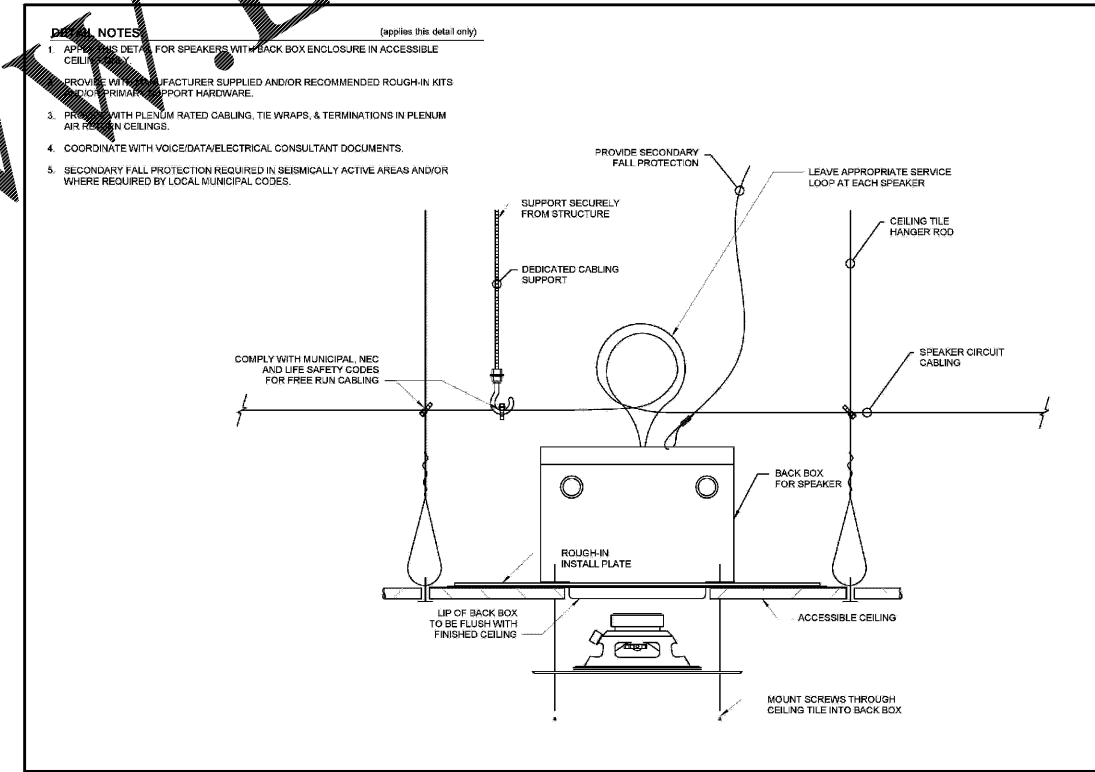
2 TYPICAL SPEAKER W/INTEGRAL ENCLOSURE
T3.02 12" = 1'-0"



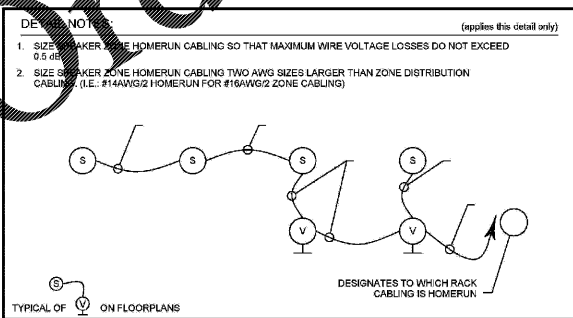
1 TYPICAL SPEAKER WITH BACKBOX
T3.02 12" = 1'-0"



4 SPEAKER W/INTEGRAL ENCLOSURE - FREERUN
T3.02 12" = 1'-0"



3 SPEAKER W/BACKBOX - FREERUN
T3.02 12" = 1'-0"



5 TYP LOCAL VOLUME CONTROL CIRCUIT
T3.02 12" = 1'-0"

ARCHITECT
HKS ARCHITECTS, INC.
444-103319
201 ALHAMBRA CIRCLE, SUITE 800
CORAL GABLES, FL 33134

CIVIL ENGINEER
KIMLEY-HORN
12740 GRAN BAY PARKWAY WEST
SUITE 2350
JACKSONVILLE, FL 32258

STRUCTURAL CONSULTANT
THORNTON TOMASETTI
101 NE 13TH AVE., SUITE 1170
FORT LAUDERDALE, FL 33301-1130

MEP CONSULTANT
THOMPSON FILE
53 TECHNOLOGY PARK & PEACHTREE CORNERS
GA 30028

KITCHEN CONSULTANT
INNOVATIVE FOOD SERVICE
11501 NORTH 45TH STREET, TAMPA, FL 33617

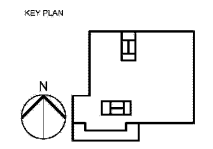
WATERPROOFING CONSULTANT
OCC USA
6070 Park Ln., Suite 400 Dallas, TX 75231

CODE & LIFE SAFETY CONSULTANT
HOWE ENGINEERS
101 LONGWATER CIR. NORWELL, MA 02061

**MARRIOTT SAWGRASS
CABANA CLUB**

OWNER
WATERMARK CAPITAL PARTNERS, L.L.C.
150 NORTH RIVERSIDE PLAZA SUITE 400
CHICAGO, IL 60606

OWNER'S CONSULTANT
THE JOHN HARTY GROUP INC.
6085 DANFIEL RD. SUITE 200
ATLANTA, GA 30328



REVISION NO.	DESCRIPTION	DATE

HKS PROJECT NUMBER
22808.001

DATE
05/22/2020

ISSUE
PERMIT SET

SHEET TITLE
DETAILS - TECH SYSTEMS

SHEET NO.
T3.02