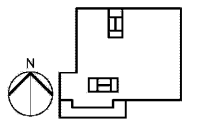


MARRIOTT SAWGRASS CABANA CLUB



REVISION NO.	DESCRIPTION	DATE

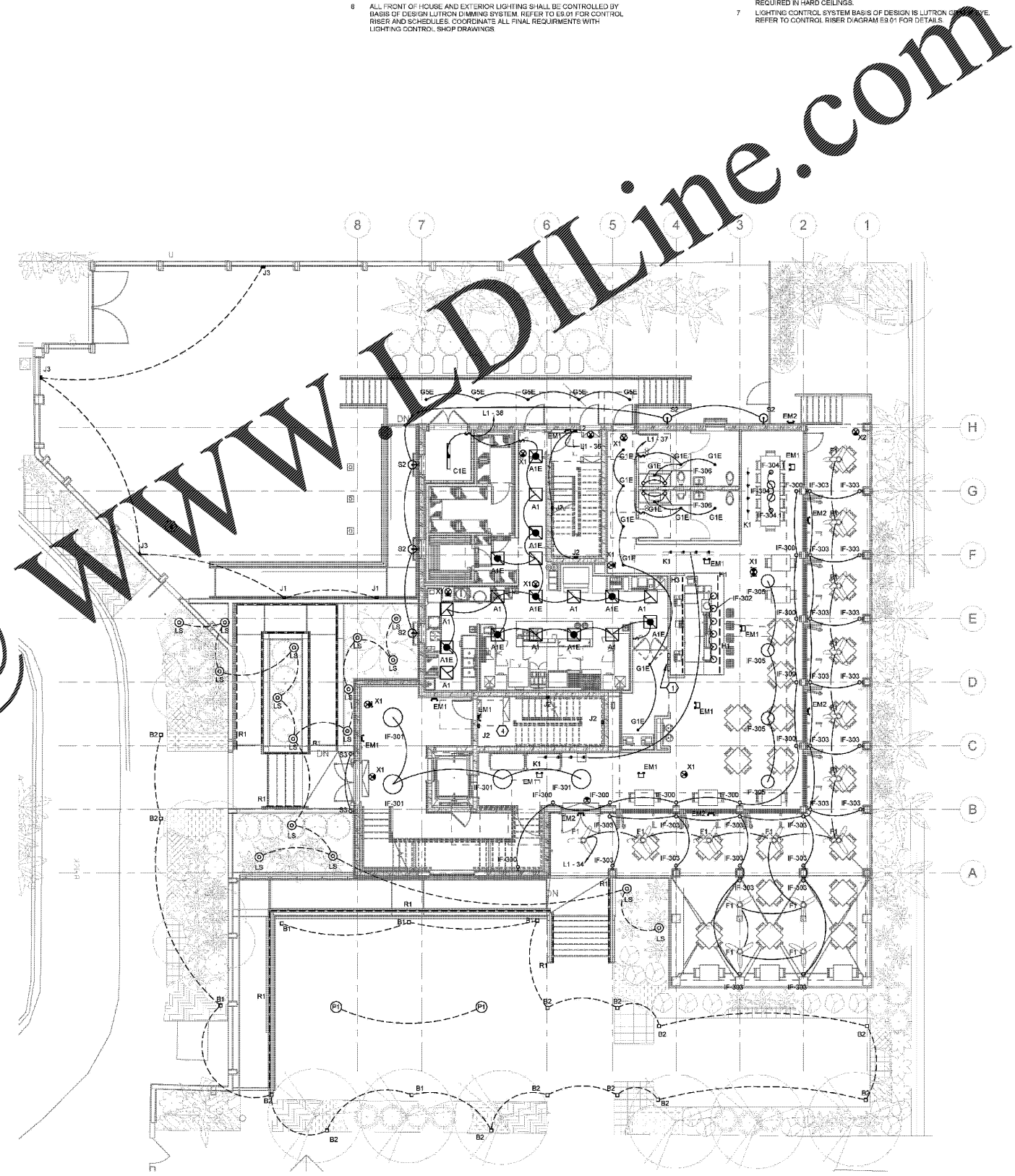
HKS PROJECT NUMBER
22808.001
DATE
05/22/2020
ISSUE
PERMIT SET
SHEET TITLE
FLOOR PLAN - LEVEL 01 & 02 - LIGHTING
SHEET NO.
E4.01

KEY NOTES:

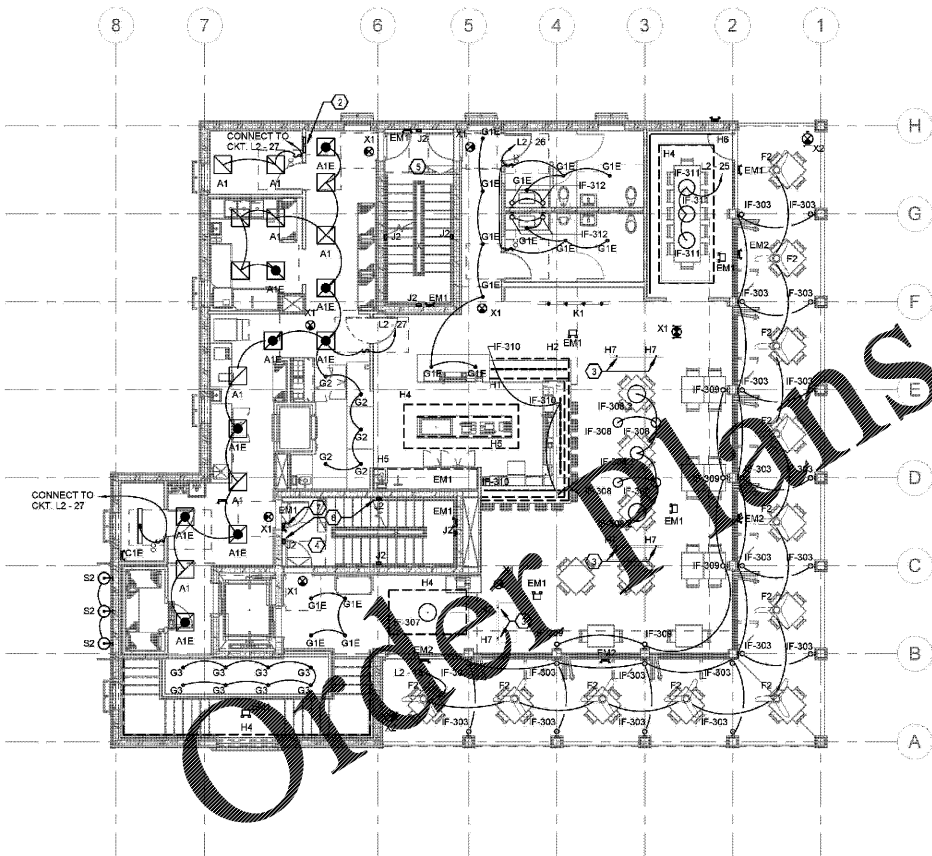
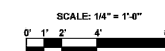
1. PROVIDE FIVE (5) 120V, 20A CIRCUITS FOR LEVEL 01 AND EXTERIOR LUTRON GRAFIK EYE LIGHTING CONTROLLERS. REFER TO CONTROL RISER E9 01 FOR FURTHER DETAILS. REFER TO PANEL SCHEDULE L1 SHEET E9 02 FOR CIRCUIT NUMBERS.
2. PROVIDE THREE (3) 120V, 20A CIRCUITS FOR LUTRON GRAFIK EYE LIGHTING CONTROLLERS. REFER TO CONTROL RISER E9 04 FOR FURTHER DETAILS. REFER TO PANEL SCHEDULE L2 SHEET E9 02 FOR CIRCUIT NUMBERS.
3. LED STRIP LIGHT MOUNTED VERTICALLY WITHIN SCREEN WALL. COORDINATE WITH INTERIORS FOR MOUNTING REQUIREMENTS.
4. STAIR LIGHTING CIRCUITED VERTICALLY UP TO DECK LEVEL ELECTRICAL ROOM PANEL L2-34.
5. STAIR LIGHTING CIRCUITED VERTICALLY DOWN TO LEVEL 01 ELECTRICAL PANEL L1-38.
6. STAIR J2 FIXTURES TO BE CENTERED ON WALL AND MOUNTED AT 7'6" A.F. OR AS HIGH AS POSSIBLE WHERE PROPOSED HEIGHT IS UNAVAILABLE TYPICAL OF BOTH STAIRS.
7. PROVIDE EMERGENCY EGRESS FIXTURE EM1 FOR EVERY STAIR LANDING MOUNTED ABOVE J2 FIXTURE AT 9' OR AS HIGH AS POSSIBLE ADJACENT TO J2 FIXTURE WHERE HEIGHT IS UNAVAILABLE TYPICAL OF BOTH STAIRS.
8. ALL FRONT OF HOUSE AND EXTERIOR LIGHTING SHALL BE CONTROLLED BY BASIS OF DESIGN LUTRON DIMMING SYSTEM. REFER TO E9 01 FOR CONTROL RISER AND SCHEDULES. COORDINATE ALL FINAL REQUIREMENTS WITH LIGHTING CONTROL, SHOP DRAWINGS.

SHEET NOTES:

1. ALL LIGHTING AND CONTROLS SHALL COMPLY WITH THE 2017 FLORIDA ELECTRICAL AND ENERGY CODES.
2. REFER TO SHEET E9 02 FOR LIGHTING FIXTURE SCHEDULE. COORDINATE ALL FINAL INTERIORS (IF ANY) FIXTURE SPECIFICATIONS WITH INTERIORS AND ARCHITECT.
3. COORDINATE EXACT FIXTURE TYPES, LOCATIONS AND MOUNTING REQUIREMENTS WITH INTERIORS AND ARCHITECTURAL RGS AND ELEVATIONS PRIOR TO ROUGH-IN.
4. ALL FIXTURE TYPES ENDING IN 'E' ARE DESIGNATED EMERGENCY FIXTURES WITH 90 MINUTE BATTERY BACKUP. CONNECT BATTERY CHARGING AND POWER SENSING CIRCUIT TO UN-SWITCHED PORTION OF THE CIRCUIT INDICATED.
5. ALL EXIT SIGNS SHALL HAVE A 90 MINUTE BATTERY BACKUP AND BE CONNECTED TO THE UN-SWITCHED PORTION OF THE LOCAL LIGHTING CIRCUIT PER NEC 700.12(F)(2).
6. COORDINATE ALL LOW VOLTAGE TRANSFORMER LOCATIONS WITH THE ARCHITECT, INTERIORS AND LANDSCAPE PRIOR TO ROUGH-IN. INSTALL LOW VOLTAGE TRANSFORMERS ABOVE ACCESSIBLE CEILINGS WHERE POSSIBLE. ALL CARE SHALL BE TAKEN TO LIMIT THE NUMBER OF ACCESS PANELS REQUIRED IN HARD CEILINGS.
7. LIGHTING CONTROL SYSTEM BASIS OF DESIGN IS LUTRON GRAFIK EYE. REFER TO CONTROL RISER DIAGRAM E9 01 FOR DETAILS.



1 FLOOR PLAN - LEVEL 01 - LIGHTING
E4.01 1/8" = 1'-0"



2 FLOOR PLAN - LEVEL 02 - LIGHTING
E4.01 1/8" = 1'-0"

Order Plans @