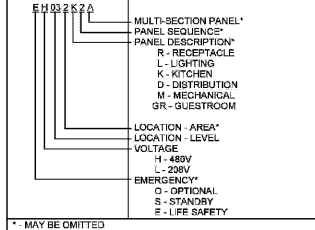


Order Plans @

ELECTRICAL ABBREVIATIONS

Table of electrical abbreviations including symbols and descriptions for items like AC, AFC, AFG, AL, etc.

PANEL NAMING CONVENTION



ELECTRICAL SYMBOL LEGEND

Table of electrical symbols and descriptions for items like single pole single throw toggle switch, double pole single throw toggle switch, etc.

Table of electrical symbols and descriptions for items like fire smoke damper power and fire alarm connection, motor operated damper power connection, etc.

ELECTRICAL SYMBOL LEGEND NOTES

- List of notes regarding equipment grounding conductors, mounting heights, flush and in-slab conduit homeruns, and dedicated circuits.

GENERAL NOTES

- List of general notes including symbol usage, diagrammatic nature of drawings, coordination with other disciplines, and specific equipment requirements.

COORDINATION NOTES

- List of coordination notes regarding electrical requirements, lighting design, special systems design, and fire alarm system components.

FLOOR BOX TAGS

Table of floor box tags with descriptions for P (Poke Thru - Floor Boxes), R (Raised Floor - Floor Boxes), S (In Slab Floor Boxes), and SB (Surface Under Carpet Raceway).



ARCHITECT
HKS ARCHITECTS, INC.
301 ALHAMBRA CIRCLE, SUITE 800
CORAL GABLES, FL 33134

CIVIL ENGINEER
KIMLEY-HORN
12740 GRAN BAY PARKWAY WEST
SUITE 2380
JACKSONVILLE, FL 32258

STRUCTURAL CONSULTANT
THORNTON TOMASETTI
101 NE 17TH AVE, SUITE 1170
FORT LAUDERDALE, FL 33301-1159

MEP CONSULTANT
THOMPSON E&E
53 TECHNOLOGY PARK, S. PEACHTREE CORNERS,
GA 30084

KITCHEN CONSULTANT
INNOVATIVE FOOD SERVICE
11501 NORTH 45TH STREET, TAMPA, FL 33617

WATERPROOFING CONSULTANT
OCCISSA
6070 Park Ln., Suite 400 Dallas, TX 75229

CODE & LIFE SAFETY CONSULTANT
HOVE ENGINEERS
101 LONGWATER CIR. NORWELL, MA 02061

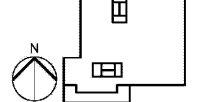
MARRIOTT SAWGRASS CABANA CLUB

OWNER
WATERMARK CAPITAL PARTNERS, L.L.C.
150 NORTH RIVERSIDE PLAZA, SUITE 400
CHICAGO, IL 60606

OWNER'S CONSULTANT
THE JOHN HARTY GROUP INC.
6085 SANDFIELD RD., SUITE 200
ATLANTA, GA 30328

DESIGNED: KNOWLTON, State of Florida, Professional Engineer, License No. 77823
This form has been electronically signed and sealed by Benjamin Knowlton, on the Date and/or Time Stamp with a digital signature.

Plotted copies of this document are not considered signed and sealed, and the signature must be verified on any electronic copy.



REVISION table with columns for NO., DESCRIPTION, and DATE.

HKS PROJECT NUMBER: 22808.001
DATE: 05/22/2020
ISSUE: PERMIT SET
SHEET TITLE: LEGEND, NOTES, & ABBREVIATIONS - ELECTRICAL
SHEET NO.:



© 2016 HKS ARCHITECTS, INC.