

Order Plans @ WWW.IDLINE.COM

VENTILATION CALCULATION

SPACE DATA		FLORIDA BUILDING CODE, MECHANICAL 2017, TABLE 403.3.1.1 - MINIMUM VENTILATION RATE DATA						VENTILATION CALCULATIONS				
ROOM #, NAME	AREA (SF)	OCCUPANCY CLASSIFICATION	OCCUPANT DENSITY #/1000SF	PEOPLE O/A RATE (CFM/PERSON)	AREA O/A RATE (CFM/SF)	ZONE AIR DISTRIBUTION EFFECTIVENESS	E/A RATE (CFM/SF)	MINIMUM O/A (CFM)	O/A PROVIDED (CFM)	MINIMUM E/A (CFM)	E/A PROVIDED (CFM)	AIR BALANCE (CFM)
LEVEL 01												
SEATING AREA	1104	DINING ROOMS	70	7.5	0.18	0.8	--	972.0	975	--	0	975
MENS	132	TOILET ROOMS - PUBLIC	--	--	--	--	NOTE 1	--	0	140	200	-200
WOMENS	137	TOILET ROOMS - PUBLIC	--	--	--	--	NOTE 1	--	0	140	200	-200
FOH CORR.	94	CORRIDOR	--	--	0.06	0.8	--	7.1	10	--	0	10
BOH CORR.	78	CORRIDOR	--	--	0.06	0.8	--	6.9	10	--	0	10
DRY STORAGE	64	STORAGE	--	--	0.12	0.8	--	9.6	10	--	0	10
KITCHEN	865	KITCHENS (COOKING)	--	--	--	--	0.7	--	3944	406	4350	-364
BEV. SVC	95	DINING ROOMS	10	7.5	0.18	0.8	--	257.3	260	--	0	260
WAITING ROOM	186	DINING ROOMS	70	7.5	0.18	0.8	--	151.8	155	140	15	5
GRAND STAIRCASE	268	RECEPTION AREA	30	5.0	0.06	0.8	--	80.5	85	--	0	15
ENTRY VESTIBULE	250	RECEPTION AREA	30	5.0	0.06	0.8	--	53.9	50	--	0	55
LEVEL 01 TOTAL	3073	--	--	--	--	--	--	1519	184	1558	26	26
LEVEL 02												
SEATING AREA	1078	DINING ROOMS	70	7.5	0.18	0.8	--	950.0	970	--	0	1070
MENS	132	TOILET ROOMS - PUBLIC	--	--	--	--	NOTE 1	--	0	140	200	-200
WOMENS	138	TOILET ROOMS - PUBLIC	--	--	--	--	NOTE 1	--	0	140	200	-200
FOH CORR.	75	CORRIDOR	--	--	0.06	0.8	--	6.6	10	--	0	10
BOH CORR.	199	CORRIDOR	--	--	0.06	0.8	--	14.9	10	--	0	10
STORAGE / FUTURE WARE WASH	107	STORAGE	--	--	0.12	0.8	--	16.1	20	--	0	20
BOH OFFICE	72	OFFICE SPACES	5	5	0.06	0.8	--	7.7	10	--	0	10
BAR / KITCHEN	727	KITCHENS (COOKING)	--	--	--	--	0.7	--	300	506	1334	-1034
STORAGE	250	STORAGE	--	--	0.12	0.8	--	37.5	40	--	0	40
WAITING AREA	191	DINING ROOMS	70	7.5	0.18	0.8	--	185.0	200	--	0	200
GRAND STAIRCASE	263	RECEPTION AREA	30	5.0	0.06	0.8	--	59.7	100	--	0	100
LEVEL 02 TOTAL	3232	--	--	--	--	--	--	1246	1760	789	1734	28
GRAND TOTAL	6305	--	--	--	--	--	--	2765	7244	1674	7192	52

1. 50 / 70 CFM E/A PER WATER CLOSET OR URINAL CONTINUOUSLY PERMITTENT

AIR DISTRIBUTION SCHEDULE

MARK	TYPE	SIZE - INCHES		FINISH	FIRE DAMPER	OBD	FUNCTION	BASIS OF DESIGN	REMARKS
		NECK	FACE						
(J)	SLOT DIFFUSER	NOTE 1	48 / 1	BLACK	NO	NOTE 3	SUPPLY	TITUS FL-10, 1 SLOT	JET THROW
(I)	SLOT DIFFUSER	NOTE 1	48 / 1	BLACK	NO	NOTE 3	SUPPLY	TITUS FL-10, 2 SLOT	HIGH THROW
(C)	RETURN GRILLE	AS NOTED ON PLAN		WHITE	NO	NO	RETURN	TITUS 355 FL	
(D)	SUPPLY GRILLE	AS NOTED ON PLAN		WHITE	NO	YES	SUPPLY	TITUS 300 FS	DIRECT HORIZONTAL BLADES DOWN
(E)	PERFORATED DIFFUSER	NOTE 1	24 / 24	WHITE	NO	NO	SUPPLY	TITUS PAS-AA	VERTICAL THROW
(F)	CONE FACED DIFFUSER	NOTE 1	24 / 24	WHITE	NO	NO	SUPPLY	TITUS TMS-AA	
(G)	RETURN GRILLE	AS NOTED ON PLAN		WHITE	NO	NO	RETURN	TITUS 50F	
(H)	EXHAUST GRILLE	NOTE 1	8 / 8	WHITE	NO	YES	EXHAUST	TITUS 50F	

- 5"Ø NECK 0 CFM TO 50 CFM; 6"Ø NECK 51 CFM TO 100 CFM; 8"Ø NECK 101 CFM TO 289 CFM; 10"Ø NECK 270 CFM TO 380 CFM; 12"Ø NECK 351 CFM AND GREATER.
- PROVIDE AN OBD WHERE DIFFUSER OR GRILLE IS INSTALLED IN HARD CEILING. DIFFUSERS OR GRILLES INSTALLED IN LAY-IN CEILINGS DO NOT REQUIRE AN OBD.
- PROVIDE A REMOTE OPERATOR ACCESSIBLE THROUGH THE FACE OF THE DIFFUSER. BASIS OF DESIGN IS YOUNG REGULATOR BOWDEN CABLE CONTROL.

MISCELLANEOUS EQUIPMENT SCHEDULE

MARK	DESCRIPTION	MARK	DESCRIPTION
(UAC) 101	UNHEATED AIR CURTAIN; MARS LPV236; LISTED FOR INSECT CONTROL AT 7'-0" MOUNTING HEIGHT; 36" LONG NOZZLE; 900 CFM; 1 MOTOR @ 1/8 HP; 115V/1PH; TOGGLE DISCONNECT; WALL MOUNTING BRACKET; DOOR LIMIT SWITCH; 316SS FINISH	(UAC) 102	UNHEATED AIR CURTAIN; MARS LPV272; LISTED FOR INSECT CONTROL AT 7'-0" MOUNTING HEIGHT; 72" LONG NOZZLE; 1800 CFM; 1 MOTOR @ 1/8 HP; 115V/1PH; TOGGLE DISCONNECT; WALL MOUNTING BRACKET; DOOR LIMIT SWITCH; 316SS FINISH
(UAC) 201	UNHEATED AIR CURTAIN; MARS LPV236; LISTED FOR INSECT CONTROL AT 7'-0" MOUNTING HEIGHT; 36" LONG NOZZLE; 900 CFM; 1 MOTOR @ 1/8 HP; 115V/1PH; TOGGLE DISCONNECT; WALL MOUNTING BRACKET; DOOR LIMIT SWITCH; 316SS FINISH	(EH) 301	ELECTRIC WALL HEATER; QMARK LFK151; 1500 WATTS; 100 CFM; 120V / 1 PH; RECESSED FRAMING; INTEGRAL T-STAT; TAMPER RESISTENT COVER



ARCHITECT
HKS ARCHITECTS, INC.
844 7003119
201 ALHAMBRA CIRCLE, SUITE 802
CORAL GABLES, FL 33134

CIVIL ENGINEER
KIMLEY-HORN
12740 GRAN BAY PARKWAY WEST
SUITE 2350
JACKSONVILLE, FL 32258

STRUCTURAL CONSULTANT
THORNTON TOMASETTI
101 NE THIRD AVE., SUITE 1170
FORT LAUDERDALE, FL 33301-1190

MEP CONSULTANT
THOMPSON E/HE
50 TECHNOLOGY PARKWAY S. PEACHTREE CORNERS,
GA 30062

KITCHEN CONSULTANT
INNOVATIVE FOOD SERVICE
11107 NORTH 40TH STREET, TAMPA, FL 33617

WATERPROOFING CONSULTANT
CQC USA
8079 Park Ln., Suite 400 Dallas, TX 75221

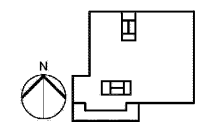
CODE & LIFE SAFETY CONSULTANT
HOWE ENGINEERS
101 LONGWATER CIR. NORWELL, MA 02061

MARRIOTT SAWGRASS CABANA CLUB

OWNER
WATERMARK CAPITAL PARTNERS, LLC
150 NORTH RIVERSIDE PLAZA, SUITE 4200
CHICAGO, IL 60606

OWNER'S CONSULTANT
THE JOHN HARDY GROUP INC.
6035 SAKFIELD RD., SUITE 200
ATLANTA, GA 30328

Allen Ellis, State of Florida, Professional Engineer,
License No. 77281
This sheet has been electronically signed and sealed by
Allen Ellis, on the Date and/or Time Stamp using a digital
signature.
Printed copies of this document are not considered signed
and sealed, and the signature must be verified on any
electronic copy.



REVISION NO.	DESCRIPTION	DATE

HKS PROJECT NUMBER
22808.001
DATE:
05/22/2020
ISSUE
PERMIT SET

8-SHEET TITLE
SCHEDULES - MECHANICAL

SHEET NO.
M0.03



Thompson E/HE Company
www.tehco.com
Tel: (713) 518-1426
TEC Project #219018
© 2018 HKS ARCHITECTS, INC.