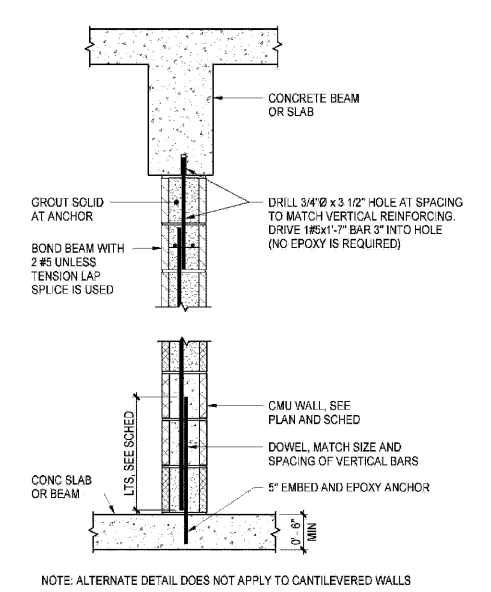


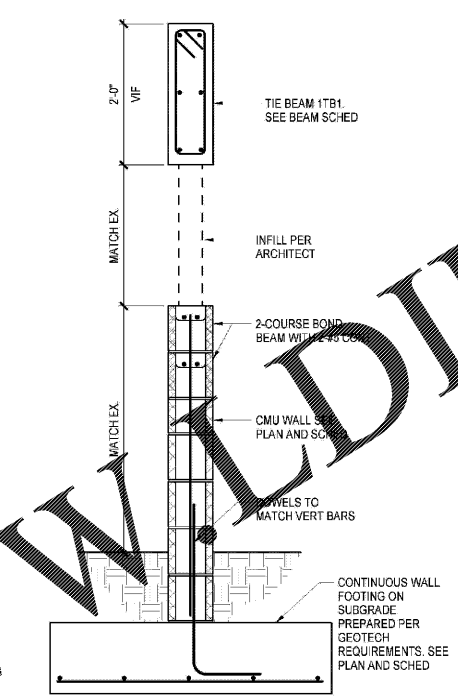
NOTE: APPLICATION METHOD SHOWN DOES NOT PROVIDE ENOUGH ACCESS FOR VIBRATION AND CONSOLIDATION OF THE MASONRY GROUT. SELF CONSOLIDATING GROUT MUST BE USED.

1 TYPICAL CMU WALL ANCHORAGE AT CIP FLOORS  
NOT TO SCALE



NOTE: ALTERNATE DETAIL DOES NOT APPLY TO CANTILEVERED WALLS

2 ALTERNATE CMU WALL ANCHORAGE AT CIP FLOORS  
(NON-POST-TENSIONED FLOORS ONLY)  
NOT TO SCALE



3 TYPICAL SITE FENCE WALL TO MATCH EXISTING  
SCALE: 1" = 1'-0"

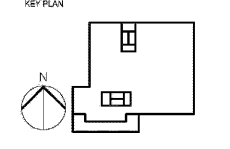
Order Plans @

WWW.WWLDILine.com

**MARRIOTT SAWGRASS CABANA CLUB**



SEAL NUMBER: STATE OF FLORIDA, LICENSE NUMBER: 55303  
THIS SEAL IS BEING USED IN FULL COMPLIANCE WITH THE REQUIREMENTS OF THE BOARD OF PROFESSIONAL ENGINEERS AND ARCHITECTS OF THE STATE OF FLORIDA.  
THIS SEAL IS BEING USED IN FULL COMPLIANCE WITH THE REQUIREMENTS OF THE BOARD OF PROFESSIONAL ENGINEERS AND ARCHITECTS OF THE STATE OF FLORIDA.



REVISION NO.	DESCRIPTION	DATE

HKS PROJECT NUMBER  
**22808.001**  
DATE:  
**05/22/2020**  
ISSUE:  
**PERMIT SET**

© SHEET TITLE  
**TYPICAL MASONRY DETAILS**

© THORNTON TOMASETTI, INC. 2020 PLOTTED ON: 5/21/2020 9:24:52 PM SHEET NUMBER: S6.02  
 B:\M\22808.001\_Marriott\_Sawgrass\_Cabana\_Club\_201905\_MAR01\TOMASETTI\_CABANA\_CLUB\_2019.rvt  
 5/21/2020 9:24:52 PM TEMPLATE VERSION: 3.0.0.2017023