

**ARCHITECT**  
HKS ARCHITECTS, INC.  
4441 DDB19  
301 ALAMARCA CIRCLE, SUITE 800  
CORAL GABLES, FL 33134

**CIVIL ENGINEER**  
KIMLEY-HORN  
12740 GRAN BAY PARKWAY WEST  
SUITE 2350  
JACKSONVILLE, FL 32258

**STRUCTURAL CONSULTANT**  
THORNTON TOMASETTI, INC.  
101 NE THIRD AVENUE, SUITE 1170  
FORT LAUDERDALE, FL 33301-1159  
www.ThorntonTomasetti.com • CO#47919

**MEP CONSULTANT**  
THOMPSON FILE  
50 TECHNOLOGY PARK & PEACHTREE CORNERS  
GA 30082

**KITCHEN CONSULTANT**  
INDUWAVE FOOD SERVICES  
11501 NORTH 45TH STREET, TAMPA, FL 33617

**WATERPROOFING CONSULTANT**  
OCC USA  
6070 Park Ln., Suite 400 Dallas, TX 75251

**CODE & LIFE SAFETY CONSULTANT**  
HOWE ENGINEERS  
101 LONGWATER CIR. NORWELL, MA 02061

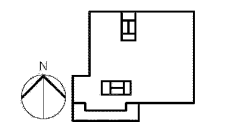
**MARRIOTT SAWGRASS CABANA CLUB**

**OWNER**  
WATERMARK CAPITAL PARTNERS, LLC  
150 NORTH RIVERSIDE PLAZA SUITE 400  
CHICAGO, IL 60606

**OWNER'S CONSULTANT**  
THE JOHN HARDY GROUP INC.  
6335 SHARFIELD RD. SUITE 300  
ATLANTA, GA 30328

**REGISTERED PROFESSIONAL ENGINEER**  
STATE OF FLORIDA  
No. 55303  
Professional Seal of J. W. WASHUK

SENDER WATERMARK CAPITAL PARTNERS, LLC HAS REVIEWED THIS DRAWING FOR CONFORMANCE WITH THE REQUIREMENTS OF THE FLORIDA PROFESSIONAL ENGINEERING ACT AND HAS FOUND IT TO BE IN ACCORDANCE WITH THE REQUIREMENTS OF THE ACT. THIS REVIEW IS LIMITED TO THE TECHNICAL ASPECTS OF THE DRAWING AND DOES NOT CONSTITUTE A GUARANTEE OF THE ACCURACY OF THE INFORMATION PROVIDED HEREON. THE ENGINEER'S LIABILITY IS LIMITED TO THE PROFESSIONAL SERVICES PROVIDED BY HIMSELF OR HIS FIRM.



REVISION

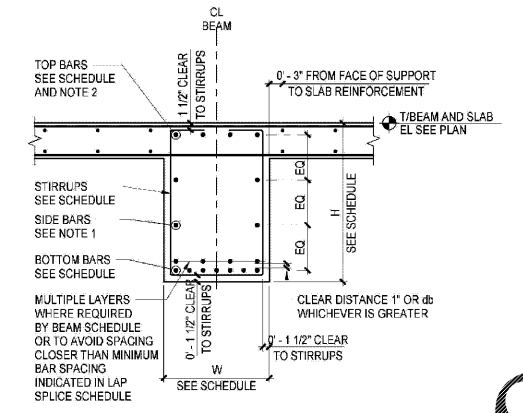
NO.	DESCRIPTION	DATE

HKS PROJECT NUMBER  
**22808.001**

DATE:  
**05/22/2020**

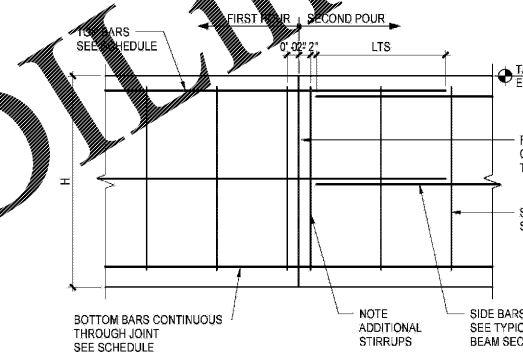
ISSUE:  
**PERMIT SET**

SHEET TITLE  
**TYPICAL CONCRETE BEAM DETAILS**



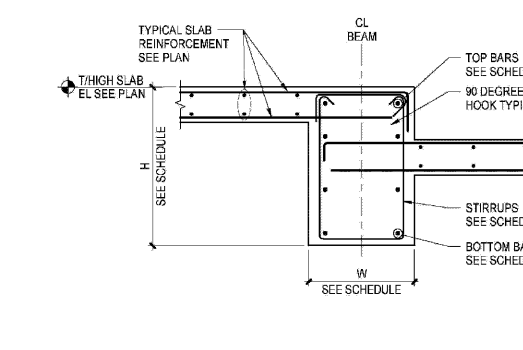
- NOTES:**
- IF H IS GREATER THAN 36\"/>
  - WHERE TWO LAYERS OF BARS ARE REQUIRED, TOP OF SECOND LAYER SHALL BE AT LEAST 1\"/>

**2 TYPICAL BEAM SECTION**  
NOT TO SCALE



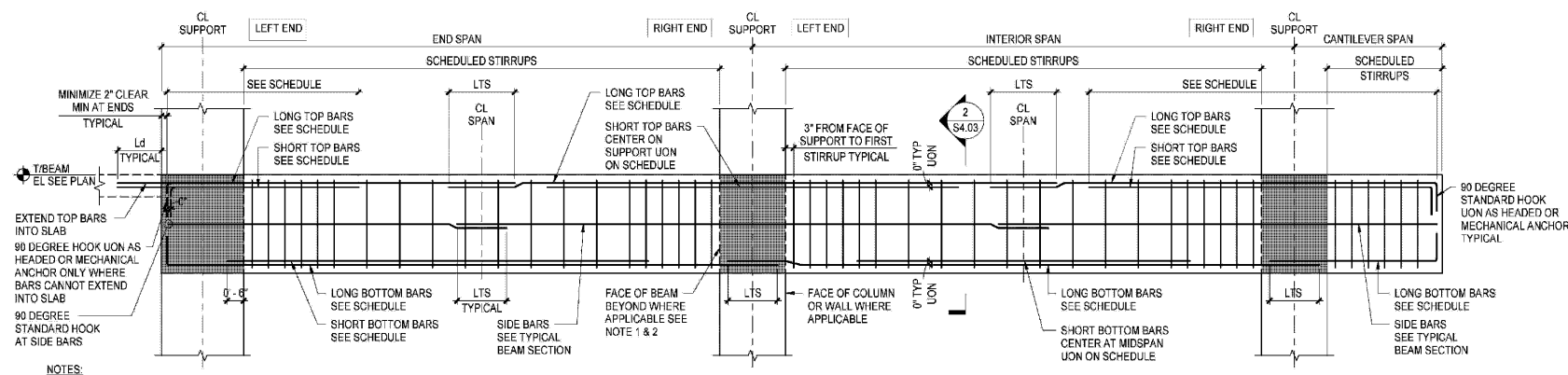
- NOTES:**
- CONTRACTOR SHALL SUBMIT CONCRETE CONSTRUCTION JOINT LAYOUT FOR REVIEW AND APPROVAL (REFER TO GENERAL NOTES AND SPECIFICATIONS) PRIOR TO REINFORCEMENT SUBMITTAL.
  - HORIZONTAL CONSTRUCTION JOINTS ARE NOT PERMITTED WITHOUT WRITTEN APPROVAL FROM SER.

**6 TYPICAL BEAM CONSTRUCTION JOINT - ELEVATION**  
NOT TO SCALE



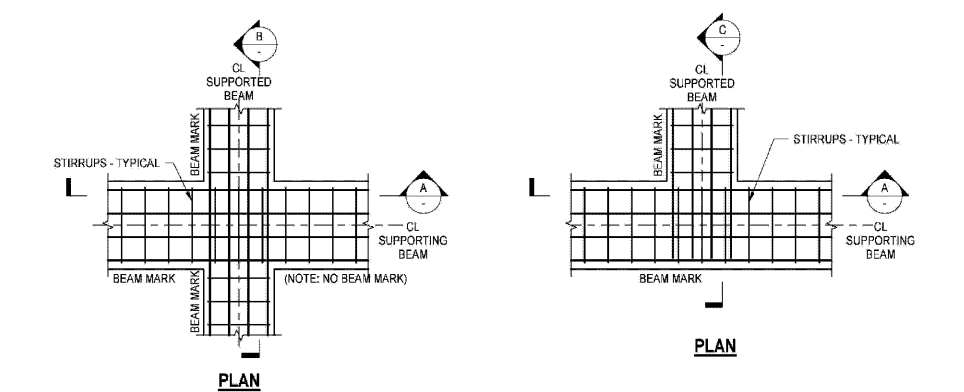
- NOTES:**
- SEE TYPICAL BEAM SECTION FOR INFORMATION NOT SHOWN

**7 TYPICAL SLAB / BEAM DETAIL AT CHANGE OF SLAB ELEVATION**  
NOT TO SCALE

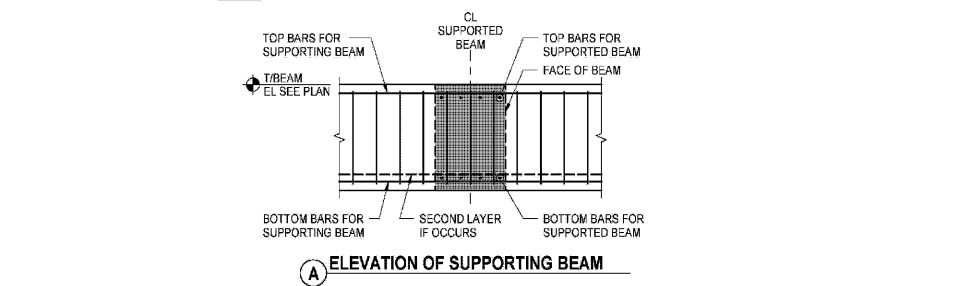


- NOTES:**
- ELEVATION AS SHOWN REPRESENTS STIRRUP ARRANGEMENT AT COLUMN SUPPORTS
  - FOR STIRRUP ARRANGEMENT AT BEAM SUPPORT SEE TYPICAL DETAILS AT BEAM JOINT SUPPORT
  - CONTRACTOR TO MINIMIZE NUMBER OF SPLICES
  - IF SPLICES ARE REQUIRED THE SPLICES SHALL BE LOCATED WHERE INDICATED ON THIS DETAIL

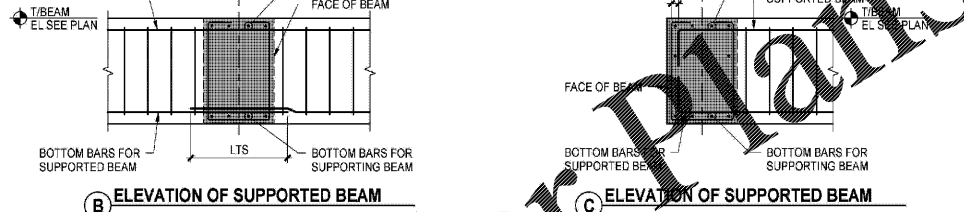
**1 TYPICAL BEAM ELEVATION**  
NOT TO SCALE



**3 BEAM ORIENTATION KEY PLAN**  
NOT TO SCALE



**A ELEVATION OF SUPPORTING BEAM**

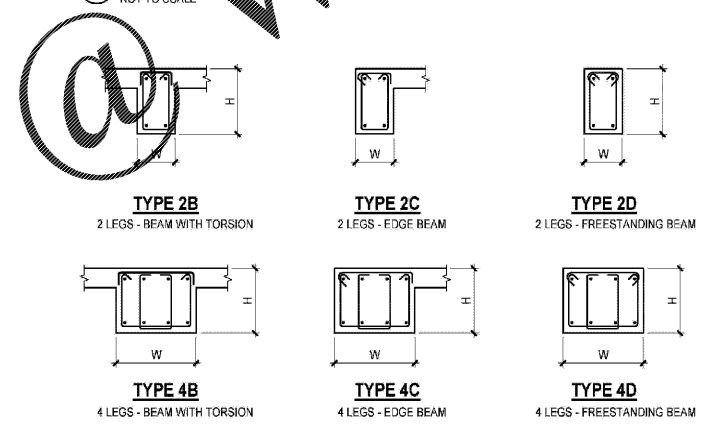


**B ELEVATION OF SUPPORTED BEAM**



**C ELEVATION OF SUPPORTED BEAM**

**4 TYPICAL DETAILS AT BEAM JOINT SUPPORT**  
NOT TO SCALE



**5 BEAM STIRRUP TYPES**  
NOT TO SCALE

Order Plans

WWW.LDLINE.COM

© THORNTON TOMASETTI, INC. 2020 PLOTTED ON: 05/22/2020 9:24:48 PM SHEET NUMBER: S4.03  
 BM: 302-22808-00 - Marriott Sawgrass Cabana Club\_201905\_MARRIOTT\_CABANA\_CLUB\_2019.rvt  
 5/21/2020 5:54:48 PM TEMPLATE VERSION: 3.0.0.20170223