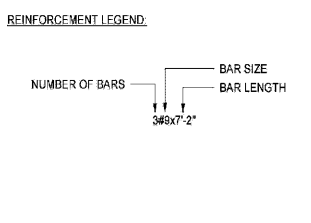


BM 300 22808.00_Marriott Sawgrass Cabana Club_201905_MAR010T_CABANA_CLUB_2019.rvt
 © THORNTON TOMASETTI, INC. 2020 PLOTTED ON: 05/22/2020 3:24:47 PM
 SHEET NUMBER: S4.02
 TEMPLATE VERSION: 3.00.0017023

CONCRETE BEAM SCHEDULE														F _c = SEE GENERAL NOTES
BEAM MARK	SIZE		REINFORCEMENT										REMARKS	
	W (IN)	H (IN)	LEFT END TOP BARS		RIGHT END TOP BARS		BOTTOM BARS		SIDE BARS EACH FACE SEE NOTE 4	STIRRUPS				
			LONG	SHORT	LONG	SHORT	LONG	SHORT		TYPE	SIZE	SPACING FROM EACH END		
2B1	8	46	2 #6	-	2 #6	-	2 #6	-	3#5 EF	2B	#3	ALL@12"		
2B2	10	15	2 #6	-	2 #6	-	2 #6	-	-	2C	#3	4@8", BAL@12"	T/BEAM VARIES, B/BEAM CONSTANT ELEV. SEE ARCH.	
2B3	8	26	2 #6	-	2 #6	-	2 #6	-	-	2C	#3	ALL@12"		
RB1	8	46	2 #5	-	2 #5	-	2 #5	-	3#5 EF	2C	#3	ALL@12"		
RB2	10	28	2 #6	-	2 #6	-	2 #6	-	1#5 EF	2D	#3	ALL@12"		
RB3	7 5/8	36	2 #6	-	2 #6	-	2 #6	-	2#5 EF	2C	#3	ALL@8"		
RB4	7 5/8	46	2 #5	-	2 #5	-	2 #5	-	3#5 EF	2D	#3	ALL@12"		
RB5	10	12	2 #5	-	2 #5	-	2 #5	-	-	2D	#3	ALL@4"		
RB6	8	45	2 #6	-	2 #6	-	2 #6	-	2#5 EF	2D	#3	ALL@12"		
RB7	7 5/8	28	2 #5	-	2 #5	-	2 #5	-	1#5 EF	2D	#3	ALL@24"		
RB8	7 5/8	24	2 #5	-	2 #5	-	2 #7	-	-	2C	#3	ALL@8"		
1TB1	8 (7 5/8)	24	2 #6	-	2 #6	-	2 #6	-	1#5 EF	2D	#3	ALL@12"	SEE SITE WALL DETAIL	
1TB2	8 (7 5/8)	24	2 #5	-	2 #5	-	2 #5	-	1#5 EF	2D	#3	ALL@24"	T/BEAM ELEV = 26'-4"	
2TB1	8 (7 5/8)	24	2 #6	-	2 #6	-	2 #6	-	-	2D	#3	ALL@24"		
RTB1	8 (7 5/8)	24	2 #5	-	2 #5	-	2 #5	-	1#5 EF	2D	#3	ALL@24"		
GB1	24	24	4 #6	-	4 #6	-	4 #6	-	-	4C	#3	ALL@8"		

- NOTES:**
- TOP OF BEAM IS ASSUMED TO BE TOP OF SLAB UON.
 - LEFT END AND RIGHT END OF BEAM ARE DEFINED ON BEAM ORIENTATION KEY PLAN.
 - WHERE REINFORCEMENT IS NOTED AS "SEE ADJ. BEAM", REINFORCEMENT IS TO BE CONTINUED FROM ADJACENT BEAM.
 - SEE TYPICAL BEAM SECTION DETAIL WHERE NO SIDE BARS ARE INDICATED.
 - CONTRACTOR SHALL COORDINATE ALL FINAL BEAM DIMENSIONS WITH ARCHITECT PRIOR TO BUILDING.



1 CONCRETE BEAM SCHEDULE
NOT TO SCALE

Order Plans @ www.LDILine.com



ARCHITECT
HKS ARCHITECTS, INC.
844-103019
201 ALHAMBRA CIRCLE, SUITE 800
CORAL GABLES, FL 33134

CIVIL ENGINEER
KIMBLE NORTH
12740 GRAN BAY PARKWAY WEST
SUITE 2850
JACKSONVILLE, FL 32258

STRUCTURAL CONSULTANT
THORNTON TOMASETTI, INC.
101 NE THIRD AVENUE, SUITE 1170
FORT LAUDERDALE, FL 33301-1159
www.ThorntonTomasetti.com • CO#47919

MEP CONSULTANT
THOMPSON FILE
50 TECHNOLOGY PARKWAY & PEACHTREE CORNERS
GA 30082

KITCHEN CONSULTANT
INNOVATIVE FOOD SERVICES
11501 NORTH 45TH STREET, TAMPA, FL 33617

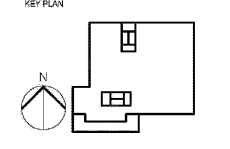
WATERPROOFING CONSULTANT
ODC USA
6070 Park Ln., Suite 400 Dallas, TX 75221

CODE & LIFE SAFETY CONSULTANT
HOWE ENGINEERS
101 LONGWATER CIR. NORWELL, MA 02061

**MARRIOTT SAWGRASS
CABANA CLUB**

OWNER
WATERMARK CAPITAL PARTNERS, LLC
150 NORTH RIVERIDE PLAZA SUITE 400
CHICAGO, IL 60606

OWNER'S CONSULTANT
THE JOHN HARDY GROUP INC.
6355 SAKFIELD RD., SUITE 200
ATLANTA, GA 30328



REVISION NO.	DESCRIPTION	DATE

HKS PROJECT NUMBER
22808.001

DATE:
05/22/2020

ISSUE:
PERMIT SET

SHEET TITLE:
CONCRETE BEAM SCHEDULE