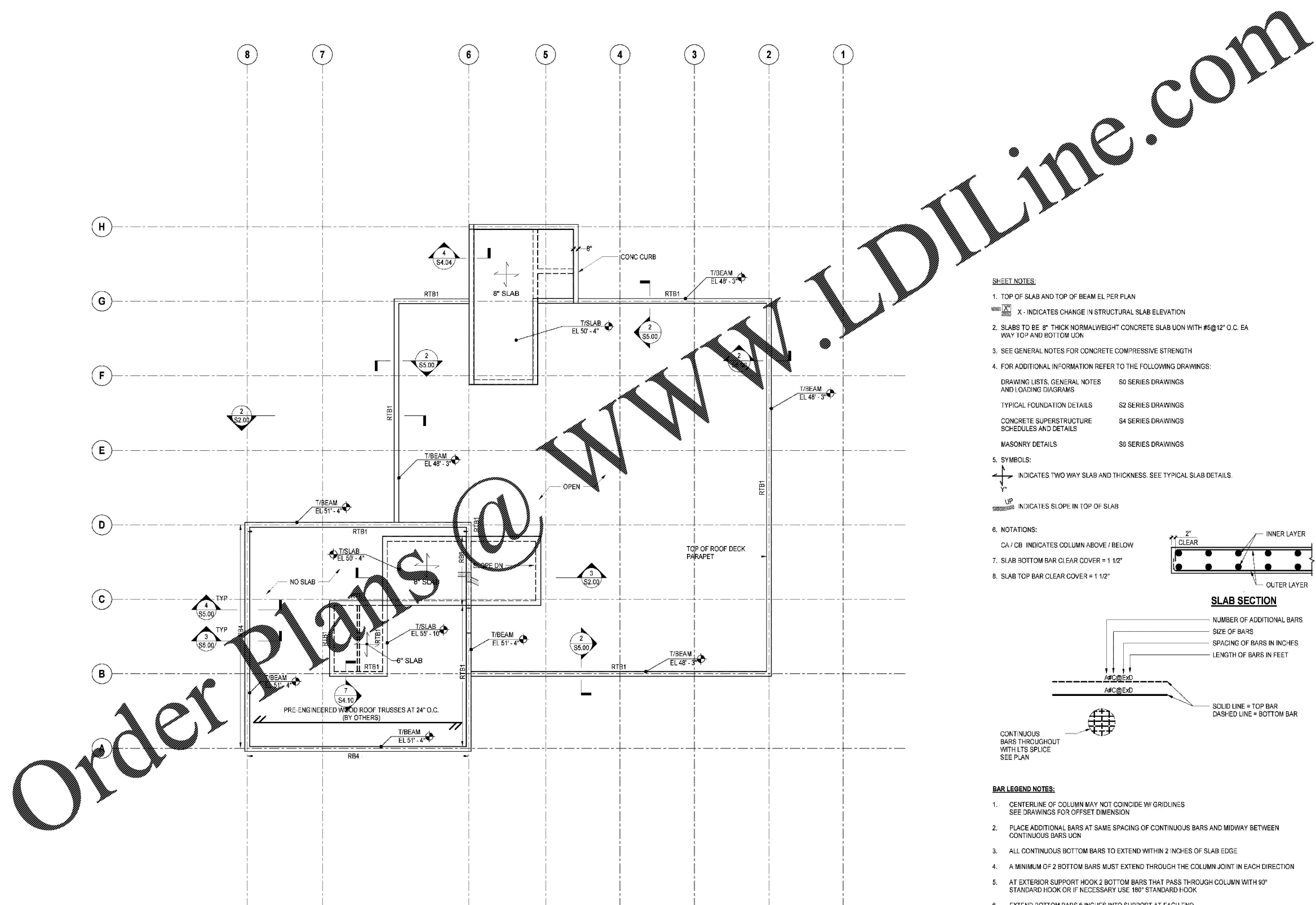


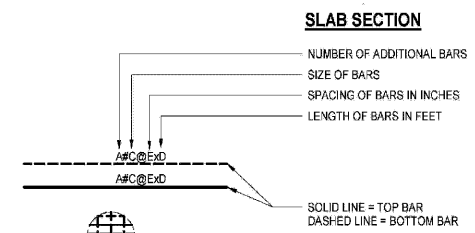
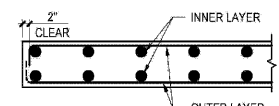
BM 100 22900.00 - Merrick Sawgrass Cabana Club 201905\_MARRIOTT\_CABANA CLUB 2019.rvt  
 BM 100 22900.00 - Merrick Sawgrass Cabana Club 201905\_MARRIOTT\_CABANA CLUB 2019.rvt  
 Sheet Number: S1.04  
 © THORNTON TOMASETTI, INC. 2020 PLOTTED ON: 05/22/2020 3:24:44 PM  
 TEMPLATE VERSION: 3.0 (02/07/2020)



**1 HIGH ROOF FRAMING PLAN**  
SCALE: 3/16" = 1'-0"

**SHEET NOTES:**

- TOP OF SLAB AND TOP OF BEAM EL PER PLAN  
 X - INDICATES CHANGE IN STRUCTURAL SLAB ELEVATION
- SLABS TO BE 8" THICK NORMALWEIGHT CONCRETE SLAB UNON WITH #5@12" O.C. EA WAY TOP AND BOTTOM UNON
- SEE GENERAL NOTES FOR CONCRETE COMPRESSIVE STRENGTH
- FOR ADDITIONAL INFORMATION REFER TO THE FOLLOWING DRAWINGS:  
 DRAWING LISTS, GENERAL NOTES S0 SERIES DRAWINGS  
 AND LOADING DIAGRAMS  
 TYPICAL FOUNDATION DETAILS S2 SERIES DRAWINGS  
 CONCRETE SUPERSTRUCTURE SCHEDULES AND DETAILS S4 SERIES DRAWINGS  
 MASONRY DETAILS S5 SERIES DRAWINGS
- SYMBOLS:**  
 INDICATES TWO WAY SLAB AND THICKNESS. SEE TYPICAL SLAB DETAILS.  
 INDICATES SLOPE IN TOP OF SLAB
- NOTATIONS:**  
 CA / CB INDICATES COLUMN ABOVE / BELOW
- SLAB BOTTOM BAR CLEAR COVER = 1 1/2"
- SLAB TOP BAR CLEAR COVER = 1 1/2"



**BAR LEGEND NOTES:**

- CENTERLINE OF COLUMN MAY NOT COINCIDE W/ GRIDLINES  
SEE DRAWINGS FOR OFFSET DIMENSION
- PLACE ADDITIONAL BARS AT SAME SPACING OF CONTINUOUS BARS AND MIDWAY BETWEEN CONTINUOUS BARS UNON
- ALL CONTINUOUS BOTTOM BARS TO EXTEND WITHIN 2 INCHES OF SLAB EDGE
- A MINIMUM OF 2 BOTTOM BARS MUST EXTEND THROUGH THE COLUMN JOINT IN EACH DIRECTION
- AT EXTERIOR SUPPORT HOOK 2 BOTTOM BARS THAT PASS THROUGH COLUMN WITH 90° STANDARD HOOK OR IF NECESSARY USE 180° STANDARD HOOK
- EXTEND BOTTOM BARS 6 INCHES INTO SUPPORT AT EACH END
- TERMINATE TOP BARS WITH STANDARD 90-DEG OR 180-DEG HOOK AT SLAB EDGES

**ARCHITECT**  
 HKS ARCHITECTS, INC.  
 444 FORD ST  
 201 ALABAMA CIRCLE, SUITE 800  
 CORAL GABLES, FL 33134

**CIVIL ENGINEER**  
 KIMBLE NORTH  
 12740 GRAN BAY PARKWAY WEST  
 SUITE 2350  
 JACKSONVILLE, FL 32258

**STRUCTURAL CONSULTANT**  
 THORNTON TOMASETTI, INC.  
 121 NE THIRD AVENUE, SUITE 1170  
 FORT LAUDERDALE, FL 33301-1159  
 www.ThorntonTomasetti.com • CO#47919

**MEP CONSULTANT**  
 THOMPSON FILE  
 52 TECHNOLOGY FRAY & PEACHTREE CORNERS  
 VA 30002

**KITCHEN CONSULTANT**  
 INNOVATIVE FOOD SERVICES  
 11501 NORTH 45TH STREET, TAMPA, FL 33617

**WATERPROOFING CONSULTANT**  
 CDC USA  
 6070 Park Ln., Suite 400 Dallas, TX 75221

**CODE & LIFE SAFETY CONSULTANT**  
 HOWE ENGINEERS  
 101 LONGWATER CIR. NORWELL, MA 02061

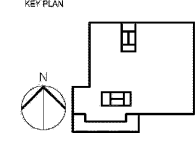
**MARRIOTT SAWGRASS CABANA CLUB**

**OWNER**  
 WATERMARK CAPITAL PARTNERS, LLC  
 150 NORTH RIVERBIDE PLAZA SUITE 420  
 CHICAGO, IL 60606

**OWNER'S CONSULTANT**  
 THE JOHN HARDY GROUP INC.  
 6355 SKYFIELD RD. SUITE 200  
 ATLANTA, GA 30328



SEAL NUMBER: 55303  
 STATE OF FLORIDA  
 PROFESSIONAL ENGINEER  
 LICENSE NO. 55303  
 EXPIRES: 12/31/2020  
 THE STATE OF FLORIDA PROFESSIONAL ENGINEER NO. 55303  
 HAS BEEN DULY REGISTERED AND IS IN GOOD STANDING  
 AS OF 05/22/2020. ANY CHANGES TO THIS INFORMATION ARE THE RESPONSIBILITY OF THE LICENSEE.  
 THE BOARD OF PROFESSIONAL ENGINEERING AND SURVEYING  
 HAS REVIEWED AND APPROVED THIS INFORMATION FOR PUBLICATION.



NO.	DESCRIPTION	DATE

HKS PROJECT NUMBER  
**22808.001**  
 DATE:  
**05/22/2020**  
 ISSUE:  
**PERMIT SET**

SHEET TITLE  
**FRAMING PLAN - ROOF ELEVATOR LEVEL**