

BM 30 22900.00\_MarrIott Sawgrass Cabana Club\_201905\_MARRIOTT\_CABANA\_CLUB\_2019.rvt  
 BM 30 22900.00\_MarrIott Sawgrass Cabana Club\_201905\_MARRIOTT\_CABANA\_CLUB\_2019.rvt  
 Sheet Number: S1.03  
 © THORNTON TOMASETTI, INC. 2020 PLOTTED ON: 05/22/2020 3:44:48 PM  
 TEMPLATE VERSION: 3.0.0.2017023

**ARCHITECT**  
 HKS ARCHITECTS, INC.  
 444 FORD ST  
 201 ALHAMBRA CIRCLE, SUITE 800  
 CORAL GABLES, FL 33134

**CIVIL ENGINEER**  
 KIMBLE HORN  
 12740 GRAN BAY PARKWAY WEST  
 SUITE 2350  
 JACKSONVILLE, FL 32258

**STRUCTURAL CONSULTANT**  
 THORNTON TOMASETTI, INC.  
 151 NE THIRD AVENUE, SUITE 1170  
 FORT LAUDERDALE, FL 33301-1159  
 www.ThorntonTomasetti.com • 561.975.9191

**MEP CONSULTANT**  
 THOMPSON FILE  
 55 TECHNOLOGY PARK & PEACHTREE CORNERS  
 SUITE 3000

**KITCHEN CONSULTANT**  
 INNOVATIVE FOOD SERVICES  
 11501 NORTH 45TH STREET, TAMPA, FL 33617

**WATERPROOFING CONSULTANT**  
 ODC USA  
 6070 Park Ln., Suite 400 Dallas, TX 75221

**CODE & LIFE SAFETY CONSULTANT**  
 HOWE ENGINEERS  
 101 LONGWATER CIR. NORWELL, MA 02061

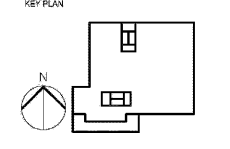
## MARRIOTT SAWGRASS CABANA CLUB

**OWNER**  
 WATERMARK CAPITAL PARTNERS, LLC  
 150 NORTH RIVERIDE PLAZA SUITE 400  
 CHICAGO, IL 60606

**OWNER'S CONSULTANT**  
 THE JOHN HARDY GROUP INC.  
 6355 SHARFIELD RD., SUITE 200  
 ATLANTA, GA 30328



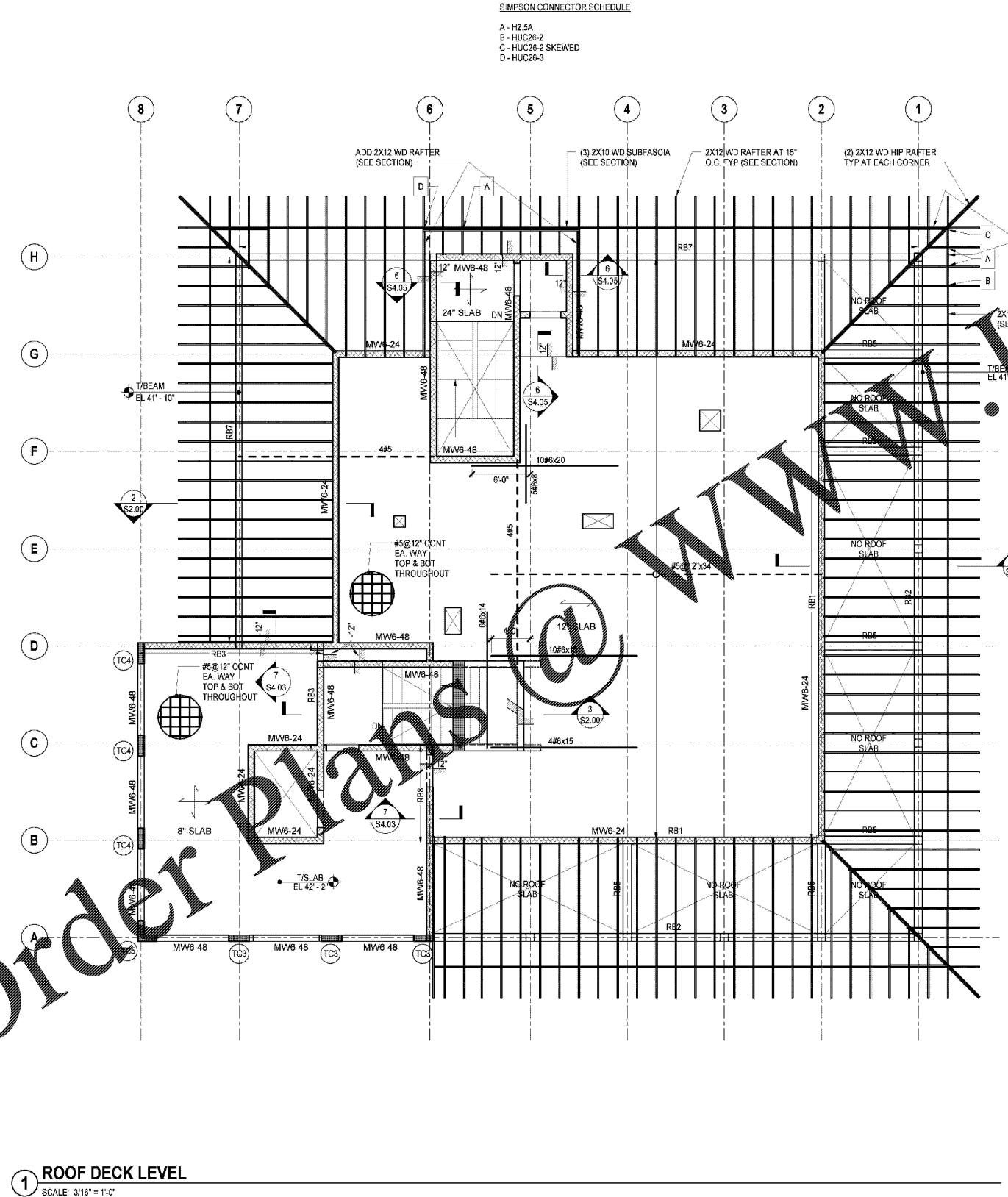
DESIGN WATERMARK PART OF FLORIDA REGISTERED ENGINEER NO. 55303  
 THE ENGINEER HAS REVIEWED THIS DRAWING AND HAS NO OBJECTION TO THE DESIGN.  
 DATE: 05/22/2020  
 SIGNATURE: [Signature]



REVISION NO.	DESCRIPTION	DATE

HKS PROJECT NUMBER  
**22808.001**  
 DATE:  
**05/22/2020**  
 ISSUE:  
**PERMIT SET**

SHEET TITLE  
**FRAMING PLAN - ROOF DECK LEVEL**

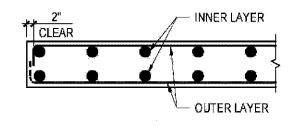


**SIMPSON CONNECTOR SCHEDULE**

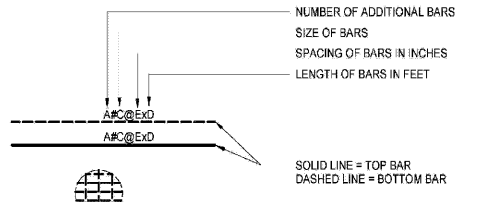
A	H2 5A
B	HUC26-2
C	HUC26-2 SKEWED
D	HUC26-3

**SHEET NOTES:**

- TOP OF SLAB AND TOP OF BEAM EL. 41'-2" UNLESS NOTED OTHERWISE.
- SLABS TO BE 12" THICK NORMALWEIGHT CONCRETE SLAB UNLESS NOTED OTHERWISE. SEE PLAN FOR TYPICAL AND ADDITIONAL SLAB REINFORCEMENT.
- SEE GENERAL NOTES FOR CONCRETE COMPRESSIVE STRENGTH.
- FOR ADDITIONAL INFORMATION REFER TO THE FOLLOWING DRAWINGS:  
 DRAWING LISTS, GENERAL NOTES S0 SERIES DRAWINGS  
 AND LOADING DIAGRAMS  
 TYPICAL FOUNDATION DETAILS S2 SERIES DRAWINGS  
 CONCRETE SUPERSTRUCTURE SCHEDULES AND DETAILS S4 SERIES DRAWINGS  
 MASONRY DETAILS S6 SERIES DRAWINGS
- SYMBOLS:  
 INDICATES TWO WAY SLAB AND THICKNESS. SEE TYPICAL SLAB DETAILS.  
 INDICATES SLOPE IN TOP OF SLAB
- NOTATIONS:  
 CA / CB INDICATES COLUMN ABOVE / BELOW
- SLAB BOTTOM BAR CLEAR COVER = 1 1/2"
- SLAB TOP BAR CLEAR COVER = 1 1/2"



**SLAB SECTION**



**BAR LEGEND NOTES:**

- CENTERLINE OF COLUMN MAY NOT COINCIDE WITH GRIDLINES. SEE DRAWINGS FOR OFFSET DIMENSION.
- PLACE ADDITIONAL BARS AT SAME SPACING OF CONTINUOUS BARS AND MIDWAY BETWEEN CONTINUOUS BARS UNLESS NOTED OTHERWISE.
- ALL CONTINUOUS BOTTOM BARS TO EXTEND WITHIN 2 INCHES OF SLAB EDGE.
- A MINIMUM OF 2 BOTTOM BARS MUST EXTEND THROUGH THE COLUMN JOINT IN EACH DIRECTION.
- AT EXTERIOR SUPPORT HOOK 2 BOTTOM BARS THAT PASS THROUGH COLUMN WITH 90° STANDARD HOOK OR IF NECESSARY USE 180° STANDARD HOOK.
- EXTEND BOTTOM BARS 6 INCHES INTO SUPPORT AT EACH END.
- TERMINATE TOP BARS WITH STANDARD 90-DEG OR 180-DEG HOOK AT SLAB EDGES.

**1 ROOF DECK LEVEL**  
 SCALE: 3/16" = 1'-0"