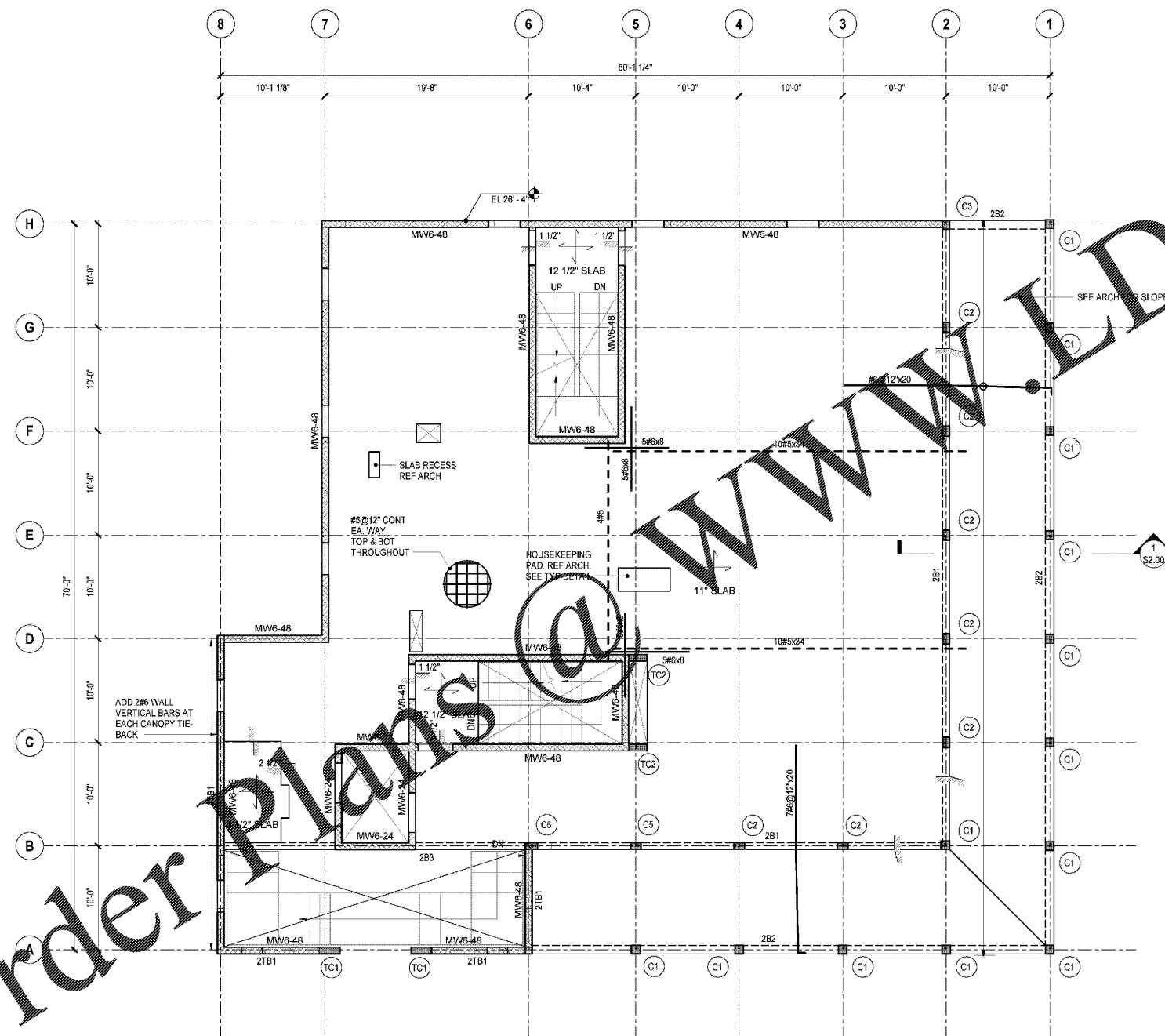


BM 30 22808.00 - Merritt Sawgrass Cabana Club_201905_MARRIOTT_CABANA_CLUB_2019.rvt
 BM 30 22808.00 - Merritt Sawgrass Cabana Club_201905_MARRIOTT_CABANA_CLUB_2019.rvt
 Sheet Number: S1.02
 © THORNTON TOMASETTI, INC. 2020 PLOTTED ON: 05/22/2020 3:24:42 PM
 TEMPLATE VERSION: 3.00 (20170223)
 05/22/2020 3:24:42 PM

WWW.EDILine.com

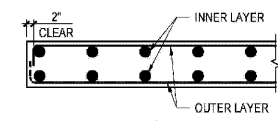
Order Plans

1 FRAMING PLAN - LEVEL 02
 SCALE: 3/16" = 1'-0"

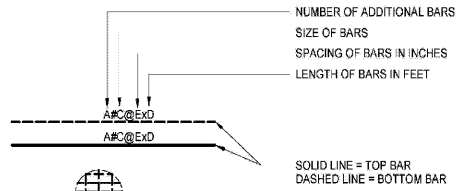


SHEET NOTES:

- TOP OF SLAB AND TOP OF BEAM EL. 26'-1 1/2" UNLESS NOTED OTHERWISE.
- SLABS TO BE 11" THICK NORMALWEIGHT CONCRETE SLAB UNLESS NOTED OTHERWISE. SEE PLAN FOR TYPICAL AND ADDITIONAL SLAB REINFORCEMENT.
- SEE GENERAL NOTES FOR CONCRETE COMPRESSIVE STRENGTH.
- FOR ADDITIONAL INFORMATION REFER TO THE FOLLOWING DRAWINGS:
 DRAWING LISTS, GENERAL NOTES AND LOADING DIAGRAMS S0 SERIES DRAWINGS
 TYPICAL FOUNDATION DETAILS S2 SERIES DRAWINGS
 CONCRETE SUPERSTRUCTURE SCHEDULES AND DETAILS S4 SERIES DRAWINGS
 MASONRY DETAILS S6 SERIES DRAWINGS
- SYMBOLS:
 [Symbol] INDICATES TWO WAY SLAB AND THICKNESS. SEE TYPICAL SLAB DETAILS.
 [Symbol] INDICATES SLOPE IN TOP OF SLAB
- NOTATIONS:
 CA / CB INDICATES COLUMN ABOVE / BELOW
- SLAB BOTTOM BAR CLEAR COVER = 1 1/2"
- SLAB TOP BAR CLEAR COVER = 1 1/2"



SLAB SECTION



- NUMBER OF ADDITIONAL BARS
 - SIZE OF BARS
 - SPACING OF BARS IN INCHES
 - LENGTH OF BARS IN FEET
- SOLID LINE = TOP BAR
 DASHED LINE = BOTTOM BAR

BAR LEGEND NOTES:

- CENTERLINE OF COLUMN MAY NOT COINCIDE W/ GRIDLINES. SEE DRAWINGS FOR OFFSET DIMENSION.
- PLACE ADDITIONAL BARS AT SAME SPACING OF CONTINUOUS BARS AND MIDWAY BETWEEN CONTINUOUS BARS UNLESS NOTED OTHERWISE.
- ALL CONTINUOUS BOTTOM BARS TO EXTEND WITHIN 2 INCHES OF SLAB EDGE.
- A MINIMUM OF 2 BOTTOM BARS MUST EXTEND THROUGH THE COLUMN JOINT IN EACH DIRECTION.
- AT EXTERIOR SUPPORT HOOK 2 BOTTOM BARS THAT PASS THROUGH COLUMN WITH 90° STANDARD HOOK OR IF NECESSARY USE 180° STANDARD HOOK.
- EXTEND BOTTOM BARS 6 INCHES INTO SUPPORT AT EACH END.
- TERMINATE TOP BARS WITH STANDARD 90-DEG OR 180-DEG HOOK AT SLAB EDGES.

ARCHITECT
 HKS ARCHITECTS, INC.
 444 FORD ST.
 201 ALHAMBRA CIRCLE, SUITE 800
 CORAL GABLES, FL 33134

CIVIL ENGINEER
 KIMBLE HORN
 12740 GRAN BAY PARKWAY WEST
 SUITE 2350
 JACKSONVILLE, FL 32258

STRUCTURAL CONSULTANT
 THORNTON TOMASETTI, INC.
 121 N. THIRD AVENUE, SUITE 1170
 FORT LAUDERDALE, FL 33301-1159
 www.ThorntonTomasetti.com • 561.975.9119

MEP CONSULTANT
 THOMPSON FILE
 52 TECHNOLOGY PARK S, PEACHTREE CORNERS,
 GA 30092

KITCHEN CONSULTANT
 INNOVATIVE FOOD SERVICES
 11501 NORTH 45TH STREET, TAMPA, FL 33617

WATERPROOFING CONSULTANT
 CDC USA
 6070 Park Ln., Suite 400 Dallas, TX 75221

CODE & LIFE SAFETY CONSULTANT
 HOWE ENGINEERS
 101 LONGWATER CIR. NORWELL, MA 02061

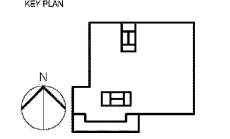
MARRIOTT SAWGRASS CABANA CLUB

OWNER
 WATERMARK CAPITAL PARTNERS, LLC
 150 NORTH RIVERSIDE PLAZA SUITE 400
 CHICAGO, IL 60606

OWNER'S CONSULTANT
 THE JOHN HARDY GROUP INC.
 6335 SHARFIELD RD., SUITE 200
 ATLANTA, GA 30328



DESIGN AND SEAL: STATE OF FLORIDA, LICENSED ENGINEER NO. 55303
 THE ENGINEER SHALL BE RESPONSIBLE FOR THE DESIGN AND SEALING OF THESE DRAWINGS.
 THIS SEAL IS VALID FOR THE DESIGN AND SEALING OF THESE DRAWINGS ONLY.
 THIS SEAL IS NOT VALID FOR ANY OTHER PROJECTS OR FOR ANY OTHER PURPOSES.
 THIS SEAL IS NOT VALID FOR ANY ELECTRICAL WORK.



REVISION NO.	DESCRIPTION	DATE

HKS PROJECT NUMBER
22808.001
 DATE:
05/22/2020
 ISSUE:
PERMIT SET

SHEET TITLE:
FRAMING PLAN - LEVEL 02