

ARCHITECT
HKS ARCHITECTS, INC.
AAA F000119
2030 SALZEDO ST. 4TH FLOOR
CORAL GABLES, FL 33134

STRUCTURAL CONSULTANT
THORNTON TOMASETTI
101 NE THIRD AVE., SUITE 1170
FORT LAUDERDALE, FL 33301-1192

MEP CONSULTANT
THORNTON DUELL
50 TECHNOLOGY PKWY S. PEACHTREE CORNERS, GA 30062

KITCHEN CONSULTANT
INNOVATIVE FOOD SERVICE
11131 NORTH 46TH STREET, TAMPA, FL 33617

WATERPROOFING CONSULTANT
CDC USA
8070 PARK LANE, SUITE 400 DALLAS, TX 75231

CODE & LIFE SAFETY CONSULTANT
HOWE ENGINEERS
101 LONGWATER CIR. NORWELL, MA 02061

**MARRIOTT SAWGRASS
CABANA CLUB**

619 PONTE VEDRA BLVD
PONTE VEDRA BEACH, FL 32082

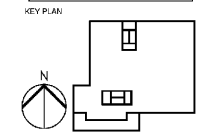
OWNER
WATERMARK CAPITAL PARTNERS, LLC
150 NORTH RIVERSIDE PLAZA SUITE 400
CHICAGO, IL 60606

OWNER'S CONSULTANT
THE JOHN HARDY GROUP INC.
6085 BARKFIELD RD. SUITE 200
ATLANTA, GA 30328

CIVIL ENGINEER AND LANDSCAPE CONSULTANT
VIMLEY HORN
12740 GRAN BAY PARKWAY WEST
SUITE 2050
JACKSONVILLE, FL 32256

INTERIOR DESIGN CONSULTANT
H&M DESIGN
3216 NEBRASKA AVENUE, SANTA MONICA,
CALIFORNIA 90404 U. S. A.

This drawing is for information only to be used by the contractor as a general arrangement of major conditions. It has been made from available information, however measurements are to be verified on project site. This drawing must be verified and approved prior to their detailing and fabrication.
This drawing is the property of HIRSCH/SEDNER AND ASSOCIATES and is not to be reproduced or copied in whole or in part. It is only to be used for the project and site specifically identified herein and is not to be used on any other project. It is to be returned upon request.



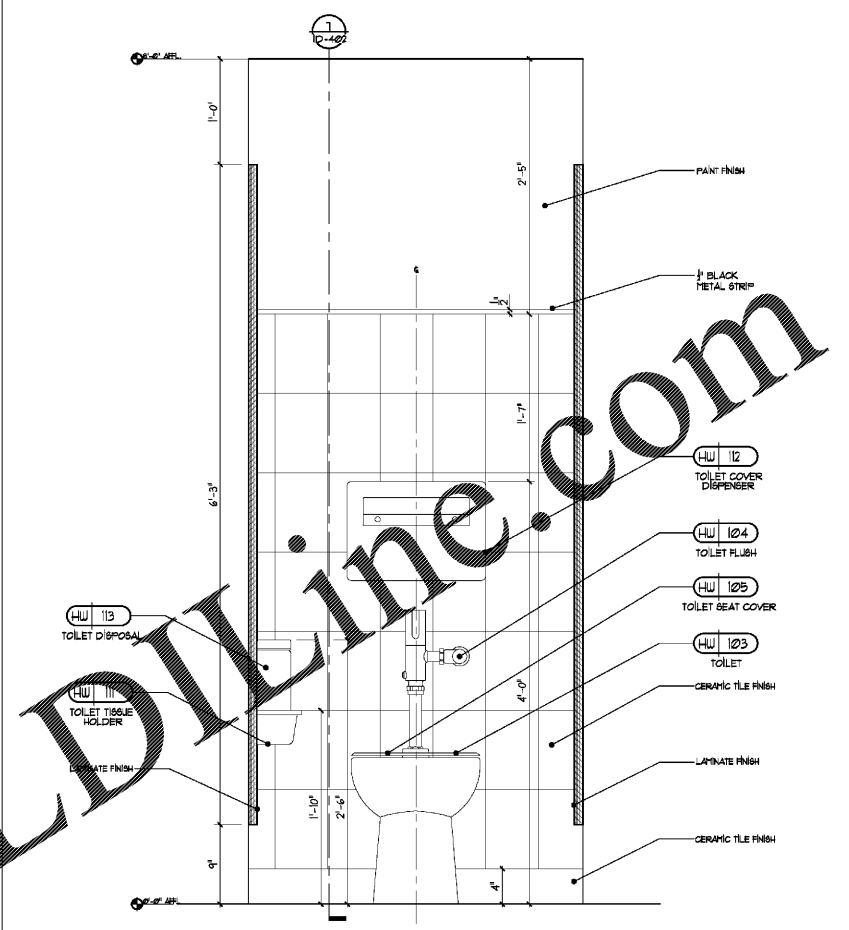
REVISION:

NO.	DESCRIPTION	DATE

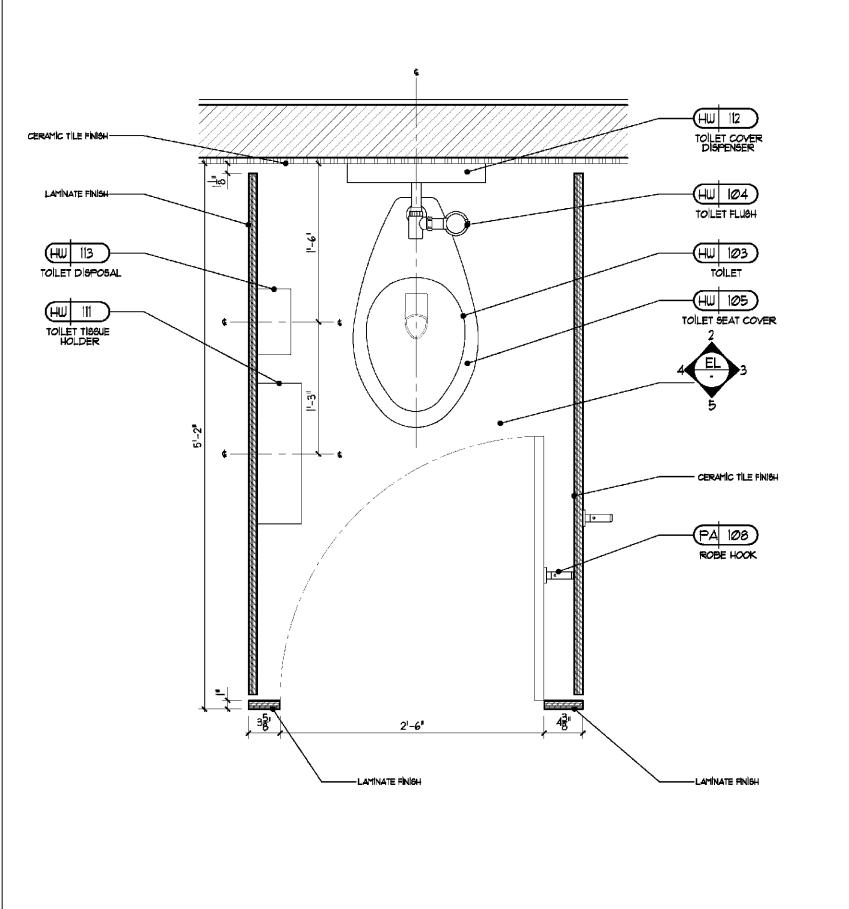
HKS PROJECT NUMBER
22808.001
DATE
05/22/2020
ISSUE
PERMIT SET

SHEET TITLE
**PUBLIC AREA - L1 & L2
WC CUBICAL DETAILS**

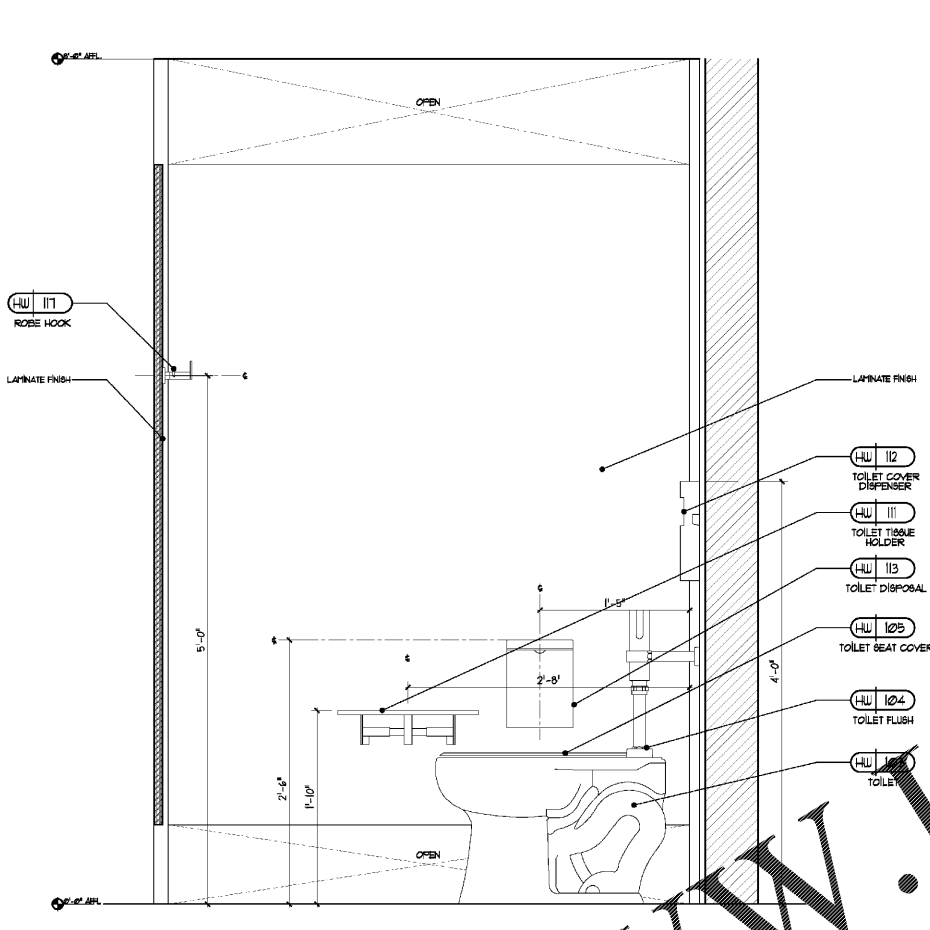
SHEET NO.
ID-901



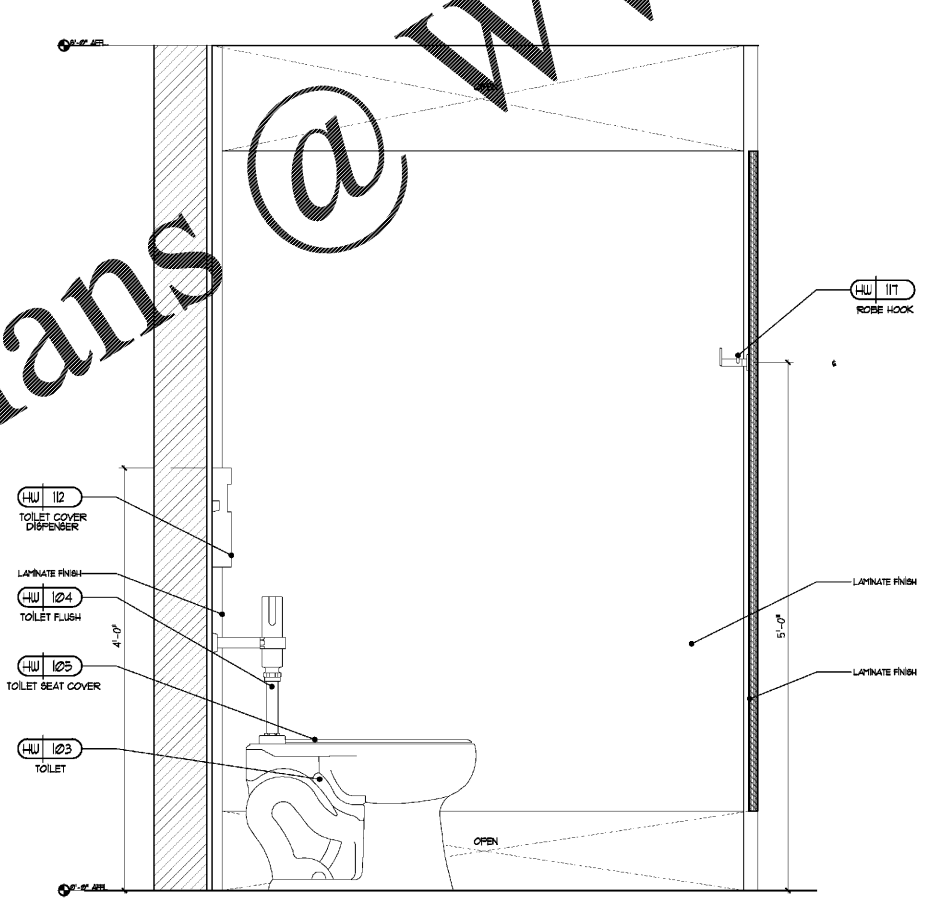
2 ELEVATION
Scale: 1 1/2" = 1'-0"



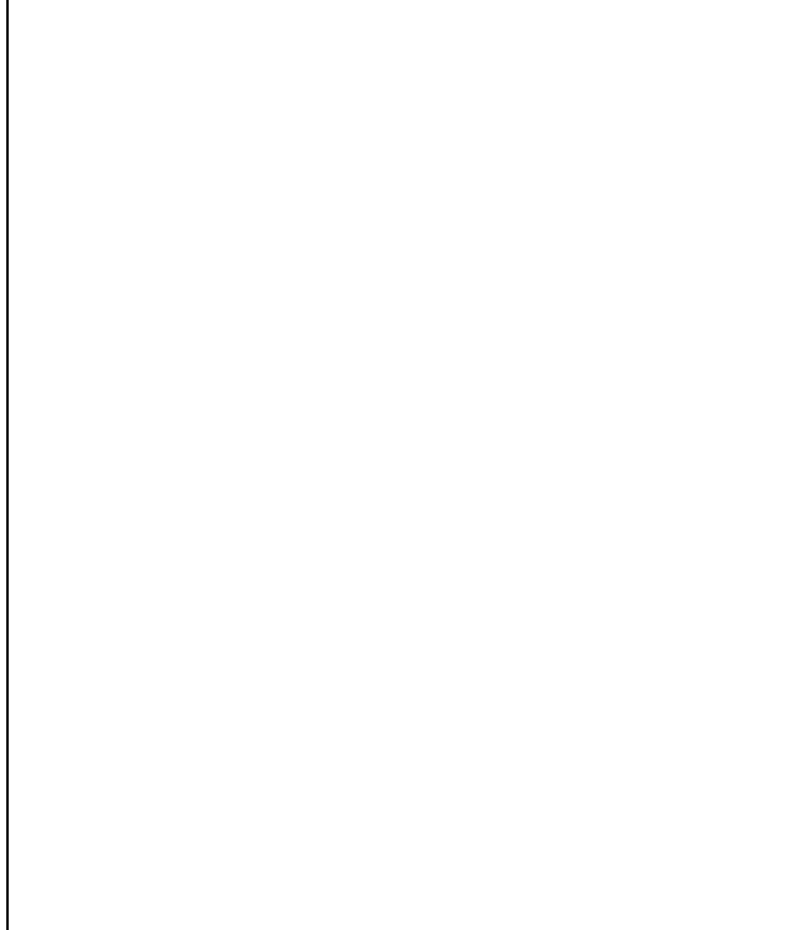
1 PLAN @ WC
Scale: 1 1/2" = 1'-0"



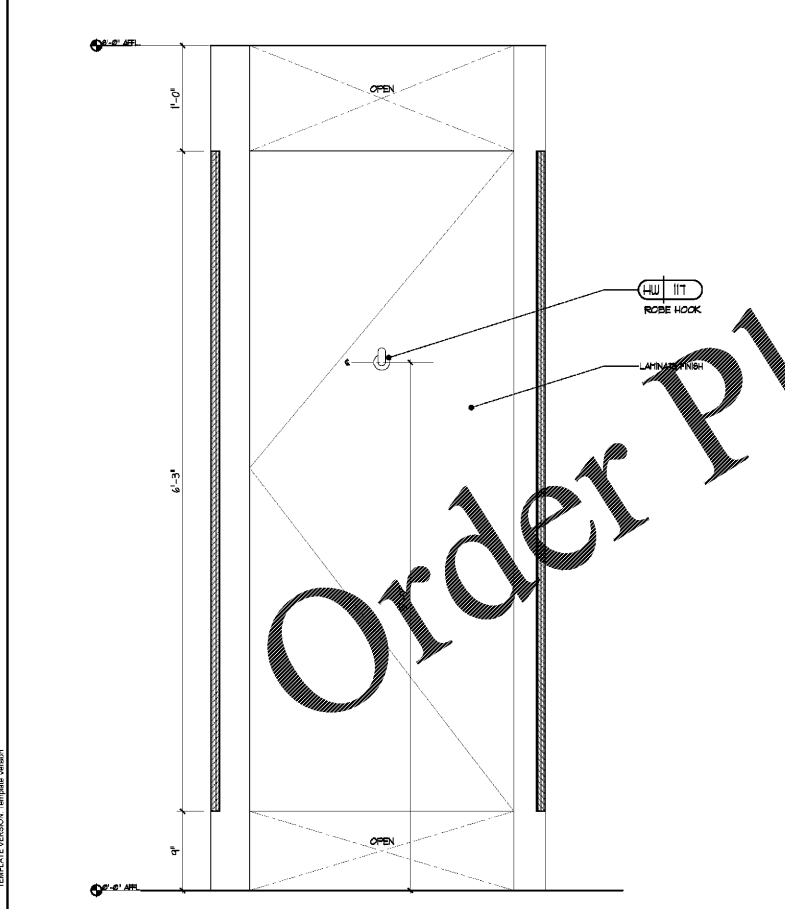
4 ELEVATION
Scale: 1 1/2" = 1'-0"



3 ELEVATION
Scale: 1 1/2" = 1'-0"



5 ELEVATION
Scale: 1 1/2" = 1'-0"



PL:CT DATE: 05/22/2020
TEMP:FILE VERSION: 05/22/2020