

ARCHITECT
HKS ARCHITECTS, INC.
AAA F500119
2020 BALZEDO ST. 4TH FLOOR
CORAL GABLES, FL 33134

STRUCTURAL CONSULTANT
THORNTON TOMASETTI
101 NE THIRD AVE., SUITE 1110
FORT LAUDERDALE, FL 33301-1129

MEP CONSULTANT
THORNTON TOMASETTI
50 TECHNOLOGY PKWY S. PEACHTREE CORNERS,
GA 30062

KITCHEN CONSULTANT
INNOVATIVE FOOD SERVICE
11131 NORTH 46TH STREET, TAMPA, FL 33617

WATERPROOFING CONSULTANT
CDC USA
8070 PARK LN., SUITE 400 DALLAS, TX 75221

CODE & LIFE SAFETY CONSULTANT
HOWE ENGINEERS
101 LONGWATER CIR, NORWELL, MA 02061

MARRIOTT SAWGRASS CABANA CLUB

619 PONTE VEDRA BLVD
PONTE VEDRA BEACH, FL 32082

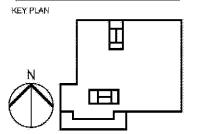
OWNER
WATERMARK CAPITAL PARTNERS, LLC
180 NORTH RIVERSIDE PLAZA SUITE 4000
CHICAGO, IL 60606

OWNER'S CONSULTANT
THE JOHN HARDY GROUP INC.
6995 BARKFIELD RD., SUITE 200
ATLANTA, GA 30328

CIVIL ENGINEER AND LANDSCAPE CONSULTANT
K&B EY & H2O
12740 GRAN BAY PARKWAY WEST
SUITE 2000
JACKSONVILLE, FL 32256

INTERIOR DESIGN CONSULTANT
H&B DESIGN
3218 NEBRASKA AVENUE, SANTA MONICA,
CALIFORNIA 90404 U. S. A.

This drawing is for information only to be used by the contractor as a general arrangement of major conditions. It has been made from available information, however measurements are to be verified on project site. This drawing must be verified and approved prior to their detailing and fabrication.
This drawing is the property of HENSOCH-BEDNER AND ASSOCIATES and is not to be reproduced or copied in whole or in part. It is only to be used for the project and site specifically identified herein and is not to be used on any other project. It is to be returned upon request.

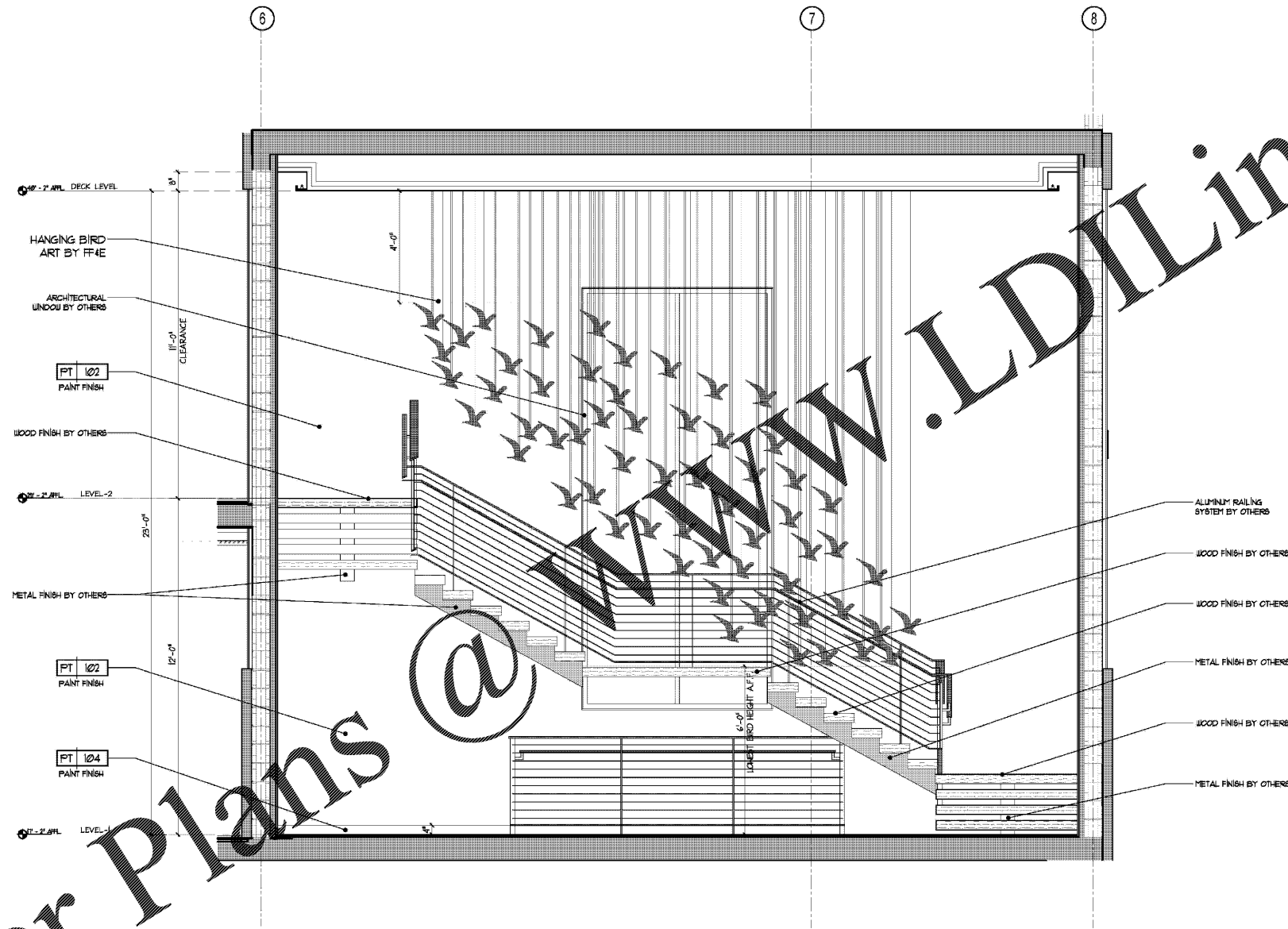


REVISION NO.	DESCRIPTION	DATE

HKS PROJECT NUMBER
22808.001
DATE:
05/23/2020
ISSUE
PERM DDCSBT

SHEET TITLE
**PUBLIC AREA - L1 & L2
GRAND STAIR DETAILS**

SHEET NO.
ID-802



Order Plans @

5 GRAND STAIR ELEVATION
Scale: 1/2" = 1'-0"