

**ARCHITECT**  
HKS ARCHITECTS, INC.  
AAA F500119  
2020 BALZEDO ST. 4TH FLOOR  
CORAL GABLES, FL 33134

**STRUCTURAL CONSULTANT**  
THORNTON TOMASETTI  
101 NE THIRD AVE., SUITE 1170  
FORT LAUDERDALE, FL 33301-1199

**MEP CONSULTANT**  
THORNTON TOMASETTI  
50 TECHNOLOGY PKWY S. PEACHTREE CORNERS,  
GA 30062

**KITCHEN CONSULTANT**  
INNOVATIVE FOOD SERVICE  
11131 NORTH 46TH STREET, TAMPA, FL 33617

**WATERPROOFING CONSULTANT**  
CDC USA  
8070 PARK LN., SUITE 400 DALLAS, TX 75231

**CODE & LIFE SAFETY CONSULTANT**  
HOWE ENGINEERS  
101 LONGWATER CIR, NORWELL, MA 02061

## MARRIOTT SAWGRASS CABANA CLUB

619 PONTE VEDRA BLVD  
PONTE VEDRA BEACH, FL 32082

**OWNER**  
WATERMARK CAPITAL PARTNERS, LLC  
180 NORTH RIVERSIDE PLAZA SUITE 400  
CHICAGO, IL 60608

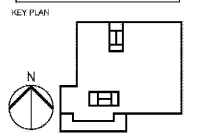
**OWNER'S CONSULTANT**  
THE JOHN HARTY GROUP INC.  
6005 BARKFIELD RD. SUITE 200  
ATLANTA, GA 30328

**CIVIL ENGINEER AND LANDSCAPE CONSULTANT**  
HKS EYKOTN  
12740 GRAN BAY PARKWAY WEST  
SUITE 2050  
JACKSONVILLE, FL 32256

**INTERIOR DESIGN CONSULTANT**  
HKS DESIGN  
3218 NEBRASKA AVENUE, SANTA MONICA,  
CALIFORNIA 90404 U.S.A.

This drawing is for information only to be used by the contractor as a general arrangement of major conditions. It has been made from available information, however measurements are to be verified on project site. This drawing must be verified and approved prior to their detailing and fabrication.

This drawing is the property of HKS/HKS DESIGN AND ASSOCIATES and is not to be reproduced or copied in whole or in part. It is only to be used for the project and site specifically identified herein and is not to be used on any other project. It is to be returned upon request.



REVISION NO.	DESCRIPTION	DATE

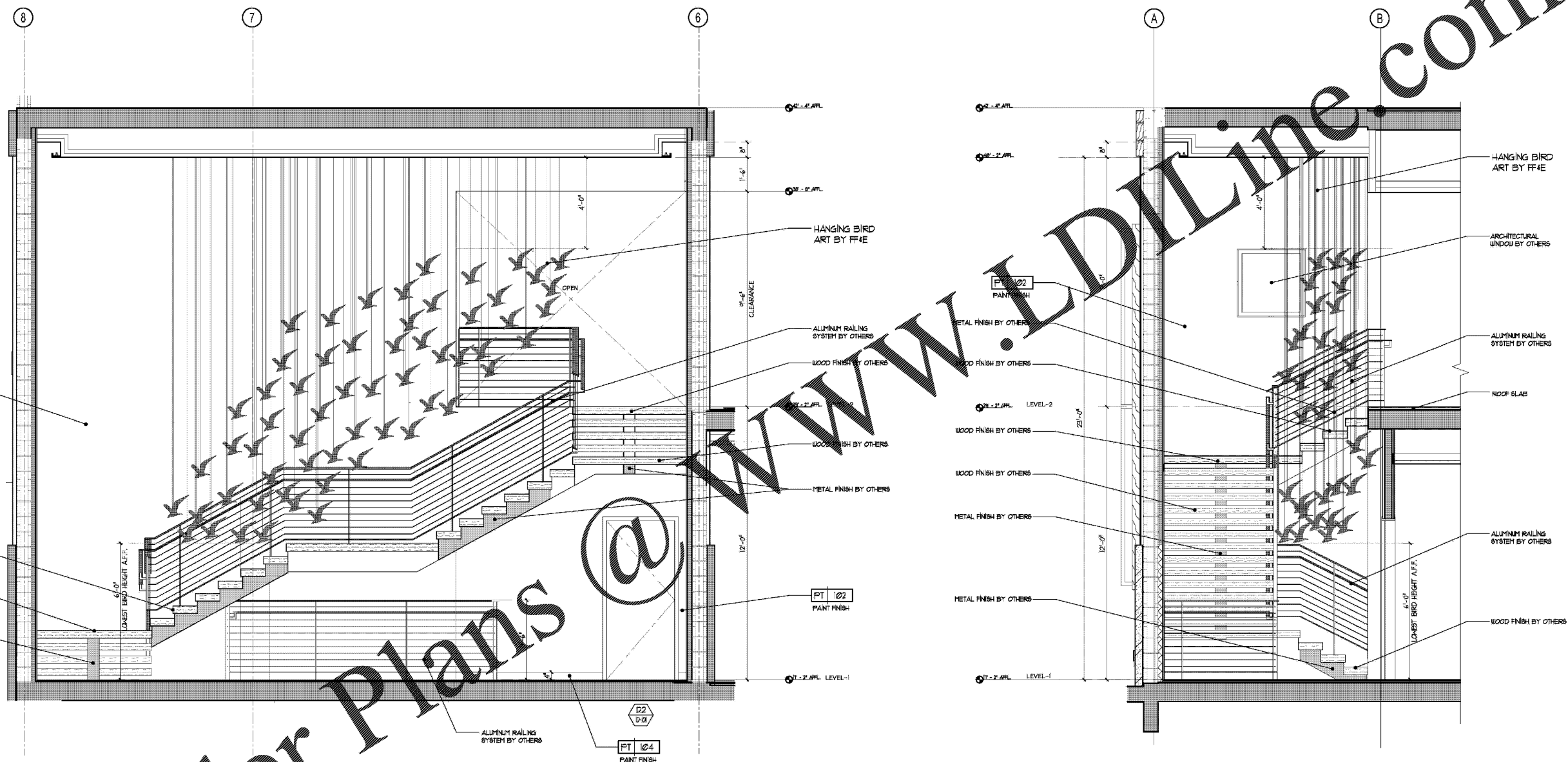
HKS PROJECT NUMBER  
**22808.001**

DATE:  
**05/23/2020**

ISSUE  
**PERMITS**

SHEET TITLE  
**PUBLIC AREA - L1 & L2  
GRAND STAIR DETAILS**

SHEET NO.  
**ID-801**



**3** GRAND STAIR ELEVATION  
Scale: 1/2" = 1'-0"

**4** GRAND STAIR ELEVATION  
Scale: 1/2" = 1'-0"

Order Plans

WWW.EDLINE.COM

PLANT DATE:  
17/2020 12:28:51 PM  
TEMP: PLANT VERSION: 1/2020 12:28:51 PM