

**MARRIOTT SAWGRASS
 CABANA CLUB**

619 PONTE VEDRA BLVD
 PONTE VEDRA BEACH, FL 32082

OWNER
 WATERMARK CAPITAL PARTNERS, LLC
 150 NORTH RIVERSIDE PLAZA SUITE 4000
 CHICAGO, IL 60606

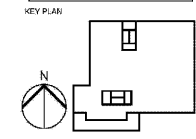
OWNER'S CONSULTANT
 THE JOHN HARDY GROUP, INC.
 6085 BARKFIELD RD. SUITE 300
 ATLANTA, GA 30328

CIVIL ENGINEER AND LANDSCAPE CONSULTANT
 HOLEYHORN
 12740 GRAN BAY PARKWAY WEST
 SUITE 2050
 JACKSONVILLE, FL 32256

INTERIOR DESIGN CONSULTANT
 H&A DESIGN
 3216 NEBRASKA AVENUE, SANTA MONICA,
 CALIFORNIA 90404 U. S. A.

This drawing is for information only to be used by the contractor as a general arrangement of error conditions. It has been made from available information, however measurements are to be verified on project site. This drawing must be verified and approved prior to their detailing and fabrication.

This drawing is the property of HIRSH-CEDNER AND ASSOCIATES and is not to be reproduced or copied in whole or in part. It is only to be used for the project and site specifically identified herein and is not to be used on any other project. It is to be returned upon request.



REVISION NO.	DESCRIPTION	DATE

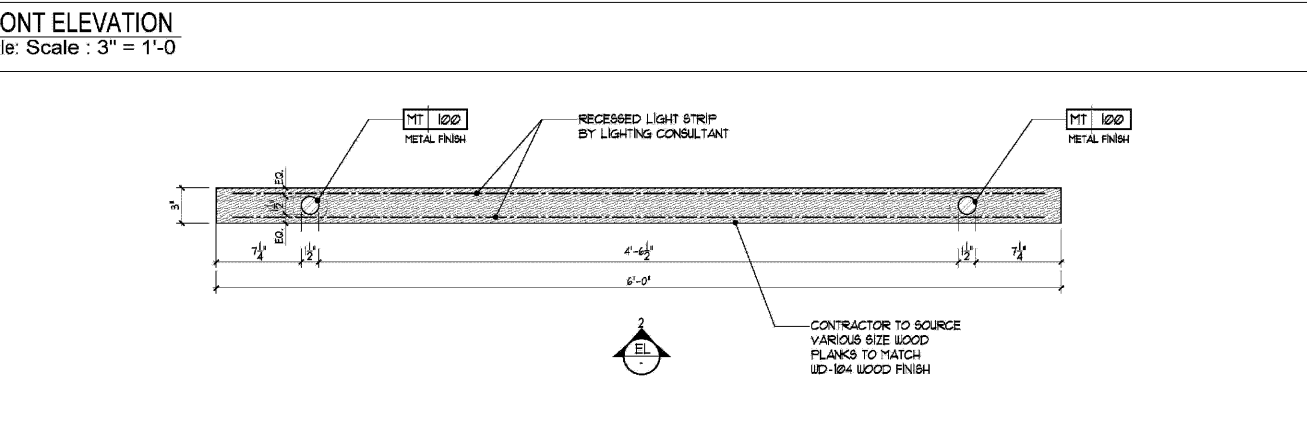
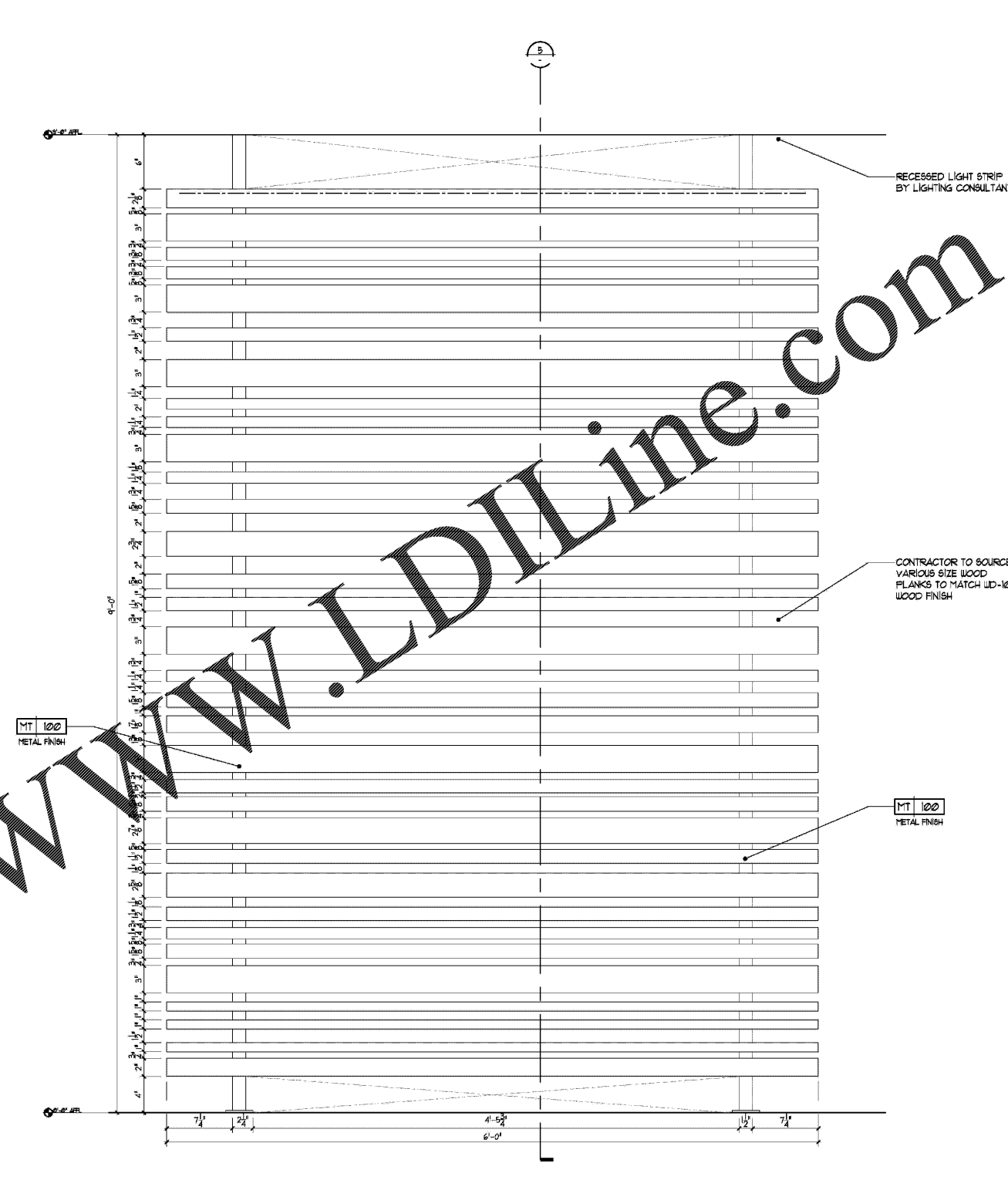
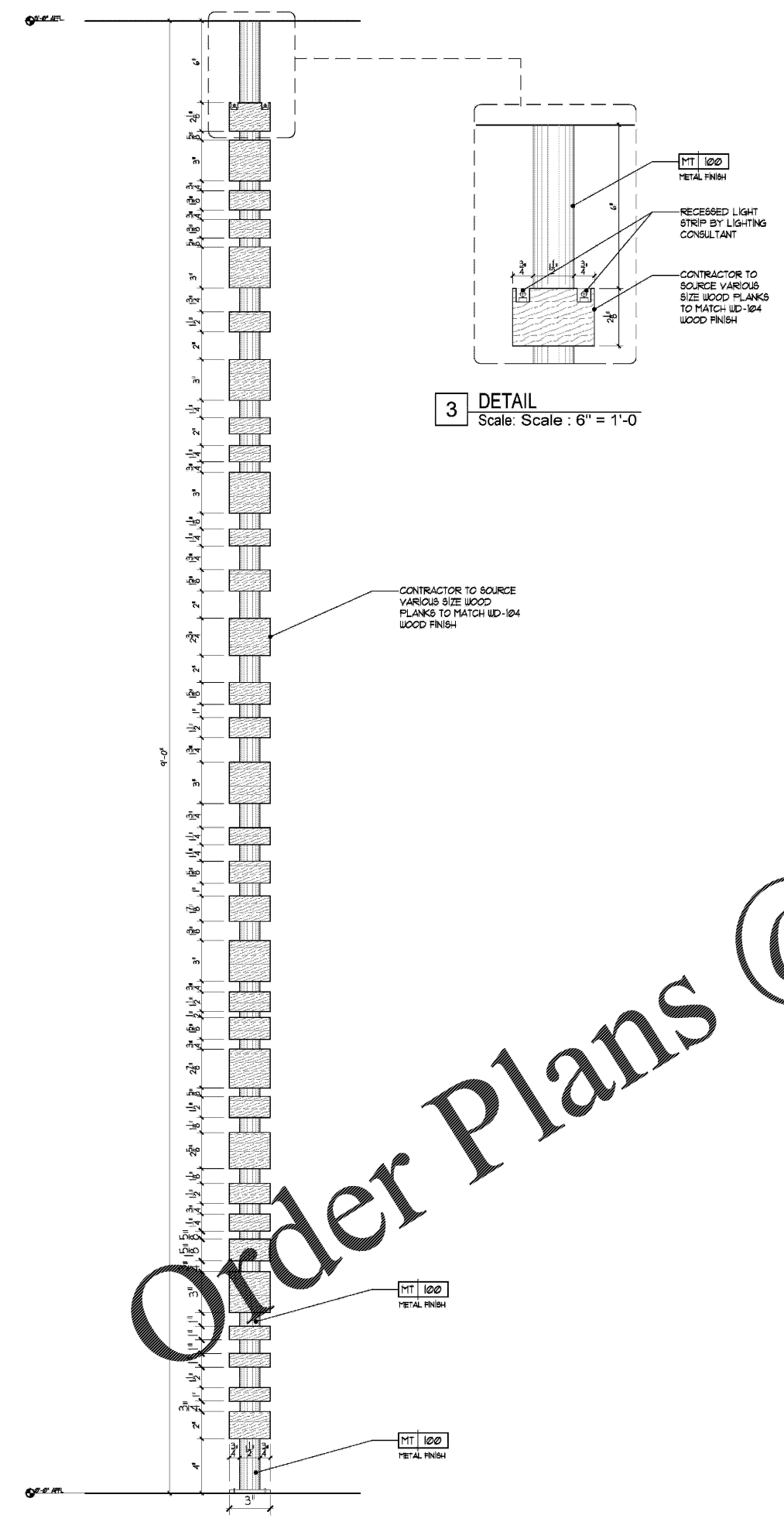
HKS PROJECT NUMBER
22808.001

DATE
05/22/2020

HKS PERMIT SET

SHEET TITLE
**PUBLIC AREA - L2
 SCREEN DETAILS**

SHEET NO.
ID-720



Order Plans @ WWW.LDIDLine.com