

ARCHITECT
HKS ARCHITECTS, INC.
AAA F500119
2030 BALZEDO ST, 4TH FLOOR
CORAL GABLES, FL 33134

STRUCTURAL CONSULTANT
THORNTON TOMASETTI
101 NE THIRD AVE, SUITE 1170
CORAL GABLES, FL 33131-1190

MEP CONSULTANT
THORNTON TOMASETTI
50 TECHNOLOGY PKWY S, PEACHTREE CORNERS, GA 30067

KITCHEN CONSULTANT
INNOVATIVE FOOD SERVICE
11131 NORTH 46TH STREET, TAMPA, FL 33617

WATERPROOFING CONSULTANT
CDC USA
6070 Park Ln., Suite 400 Dallas, TX 75231

CODE & LIFE SAFETY CONSULTANT
HOWE ENGINEERS
101 LONGWATER CIR, NORWELL, MA 02061

MARRIOTT SAWGRASS CABANA CLUB

619 PONTE VEDRA BLVD
PONTE VEDRA BEACH, FL 32082

OWNER
WATERMARK CAPITAL PARTNERS, LLC
160 NORTH RIVERSIDE PLAZA - SUITE 400
CHICAGO, IL 60606

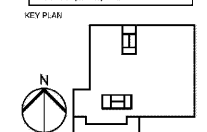
OWNER'S CONSULTANT
THE JOHN HARDY GROUP INC.
6005 BARKFIELD RD., SUITE 300
ATLANTA, GA 30328

CIVIL ENGINEER AND LANDSCAPE CONSULTANT
HOLEYHORNS
12740 GRAN BAY PARKWAY WEST
SUITE 2070
JACKSONVILLE, FL 32256

INTERIOR DESIGN CONSULTANT
H&M DESIGN
5215 NEBRASKA AVENUE, SANTA MONICA,
CALIFORNIA 90404 U. S. A.

This drawing is for information only to be used by the contractor as a general arrangement of major conditions. It has been made from available information. However, measurements are to be verified on project site. This drawing must be verified and approved prior to their detailing and fabrication.

This drawing is the property of HKS/HKS/BEDNER AND ASSOCIATES and is not to be reproduced or copied in whole or in part. It is only to be used for the project and site specifically identified herein and is not to be used on any other project. It is to be returned upon request.



REVISION NO.	DESCRIPTION	DATE

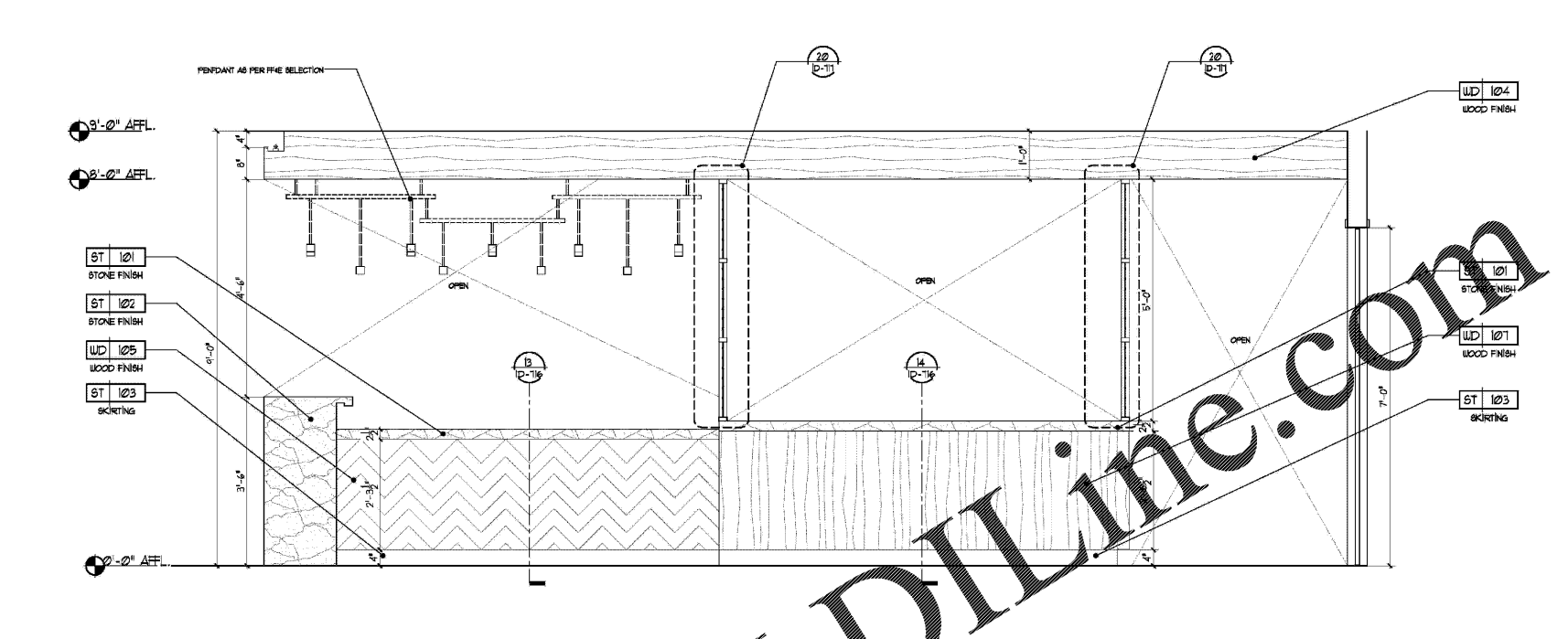
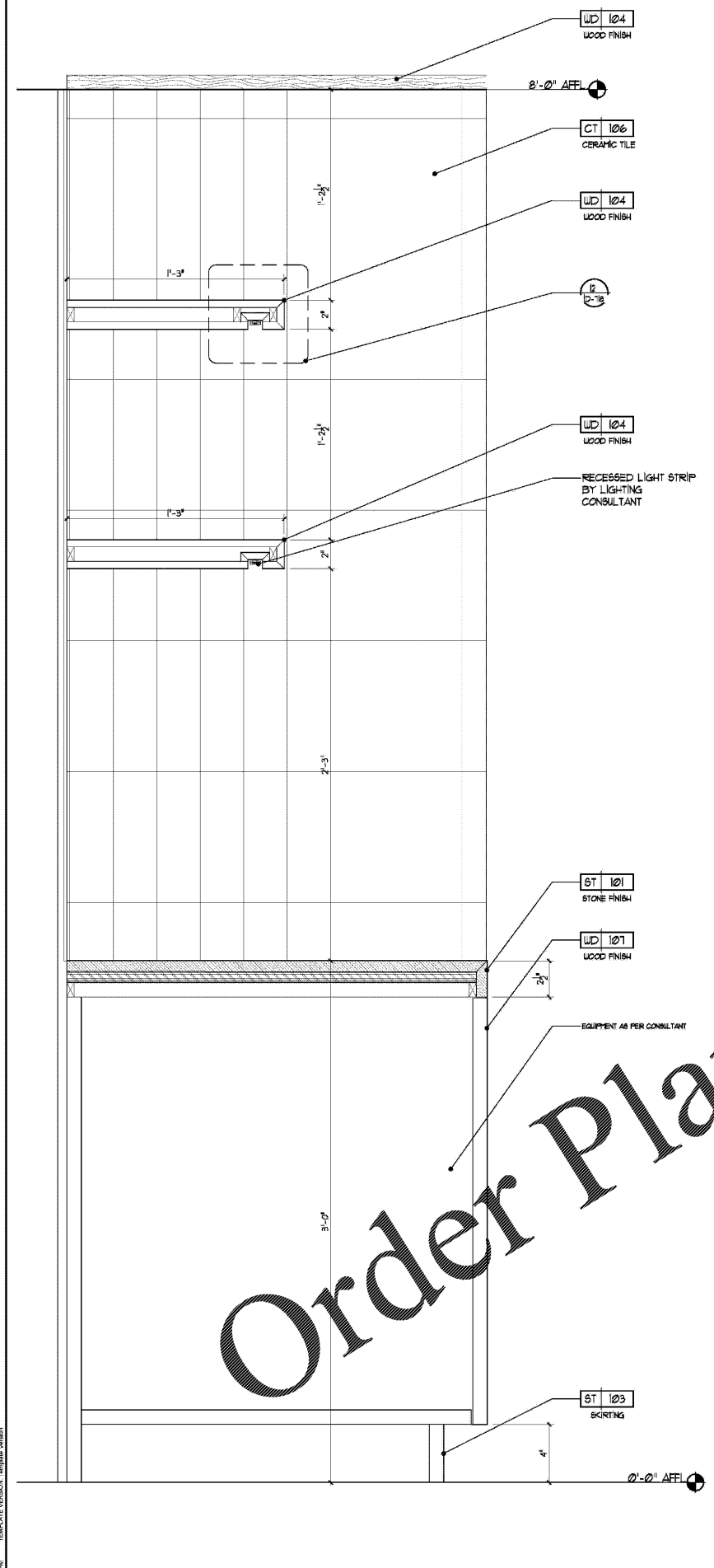
HKS PROJECT NUMBER
22808.001

DATE
05/22/2020

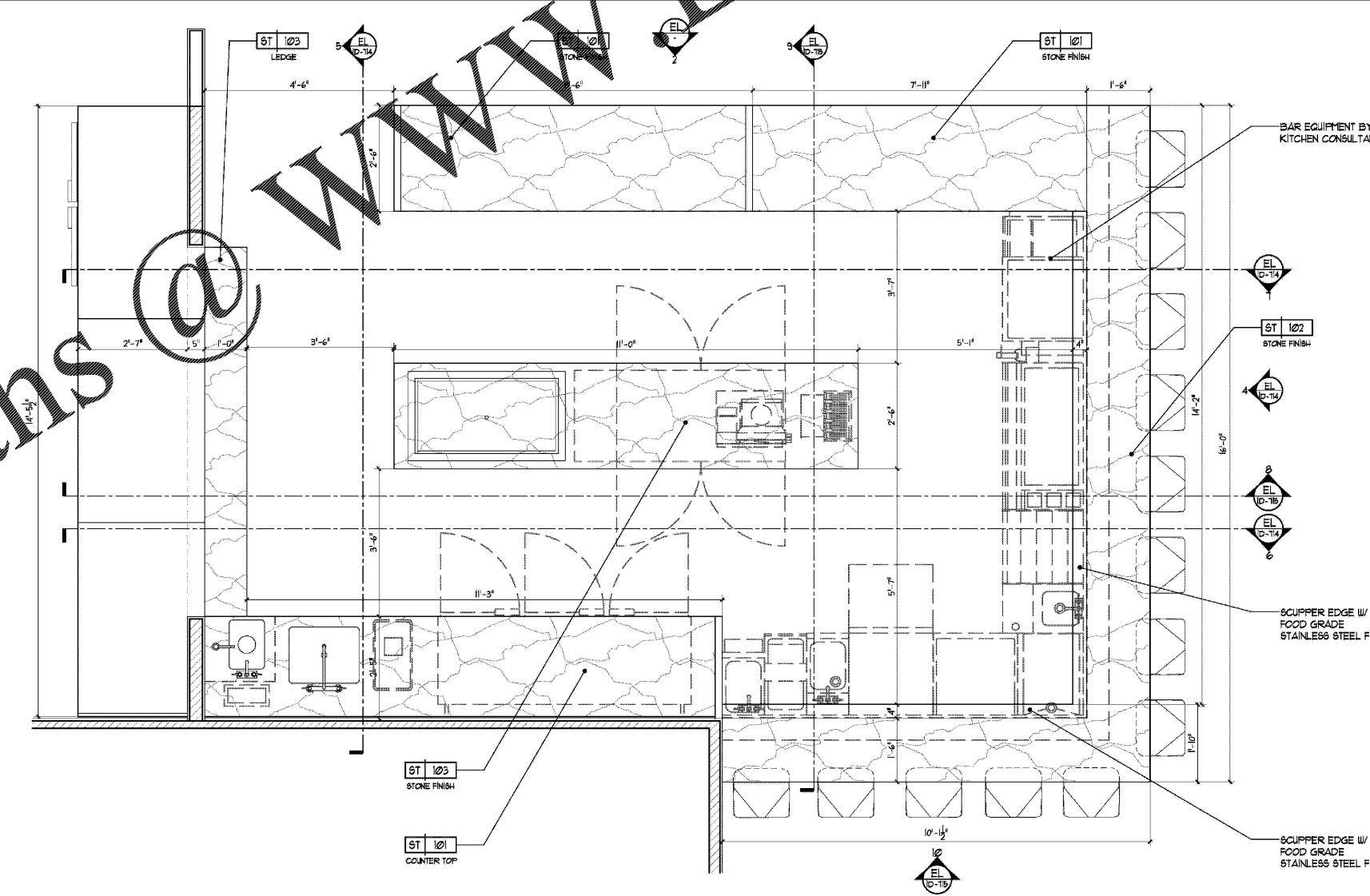
ISSUE
PERMIT SET

SHEET TITLE
**PUBLIC AREA - L2
BAR DETAILS**

SHEET NO.
ID-713



2 ELEVATION @ LEVEL 2 BAR
Scale: 3/4" = 1'-0"



1 PLAN @ LEVEL 2 BAR
Scale: 3/4" = 1'-0"

3 SECTION @ LEVEL 2 BAR
Scale: 3" = 1'-0"

Order Plans @ WWW.LDILINE.COM

WWW.LDILINE.COM