

ARCHITECT
 HKS ARCHITECTS, INC.
 AAA F500119
 2030 BALZEDO ST. 4TH FLOOR
 CORAL GABLES, FL 33134

STRUCTURAL CONSULTANT
 THORNTON TOMASETTI
 101 NE THIRD AVE., SUITE 1110
 FORT LAUDERDALE, FL 33301-1199

MEP CONSULTANT
 THORNTON TOMASETTI
 50 TECHNOLOGY PKWY S. PEACHTREE CORNERS,
 GA 30062

KITCHEN CONSULTANT
 INNOVATIVE FOOD SERVICE
 11131 NORTH 46TH STREET, TAMPA, FL 33617

WATERPROOFING CONSULTANT
 CDC USA
 0870 PARK LN., SUITE 400 DALLAS, TX 75221

CODE & LIFE SAFETY CONSULTANT
 HOWE ENGINEERS
 101 LONGWATER CIR, NORWELL, MA 02061

MARRIOTT SAWGRASS CABANA CLUB

619 PONTE VEDRA BLVD
 PONTE VEDRA BEACH, FL 32082

OWNER
 WATERMARK CAPITAL PARTNERS, LLC
 150 NORTH RIVERSIDE PLAZA SUITE 4000
 CHICAGO, IL 60606

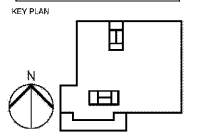
OWNER'S CONSULTANT
 THE JOHN HARBET GROUP INC.
 6085 BARKFIELD RD. SUITE 200
 ATLANTA, GA 30328

CIVIL ENGINEER AND LANDSCAPE CONSULTANT
 WALLEYHORN
 12740 GRAN BAY PARKWAY WEST
 SUITE 2050
 JACKSONVILLE, FL 32256

INTERIOR DESIGN CONSULTANT
 H&M DESIGN
 3216 NEBRASKA AVENUE, SANTA MONICA,
 CALIFORNIA 90404 U. S. A.

This drawing is for information only to be used by the contractor as a general arrangement of error conditions. It has been made from available information. However measurements are to be verified on project site. This drawing must be verified and approved prior to their detailing and fabrication.

This drawing is the property of HKS/HKS/BECHER AND ASSOCIATES and is not to be reproduced or copied in whole or in part. It is only to be used for the project and site specifically identified herein and is not to be used on any other project. It is to be returned upon request.



REVISION

NO.	DESCRIPTION	DATE

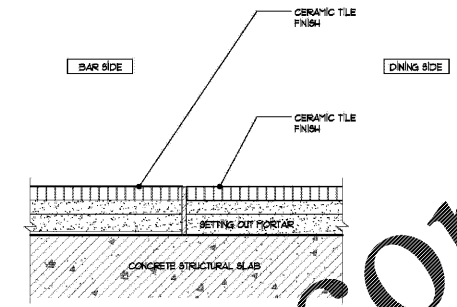
HKS PROJECT NUMBER
22808.001

DATE
05/22/2020

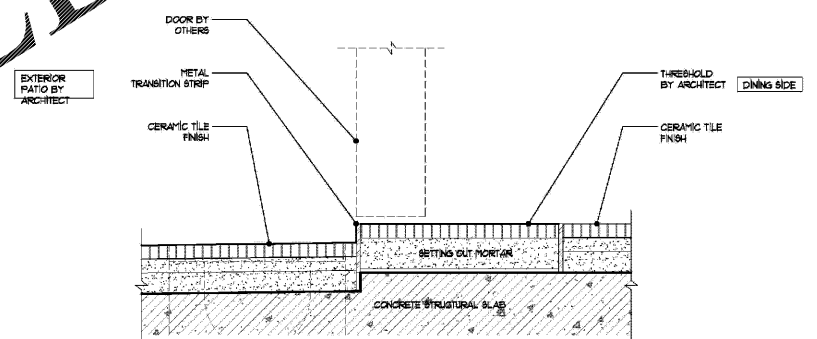
ISSUE
PERMIT SET

SHEET TITLE
**PUBLIC AREA - L1 & L2
 FLOORING DETAILS**

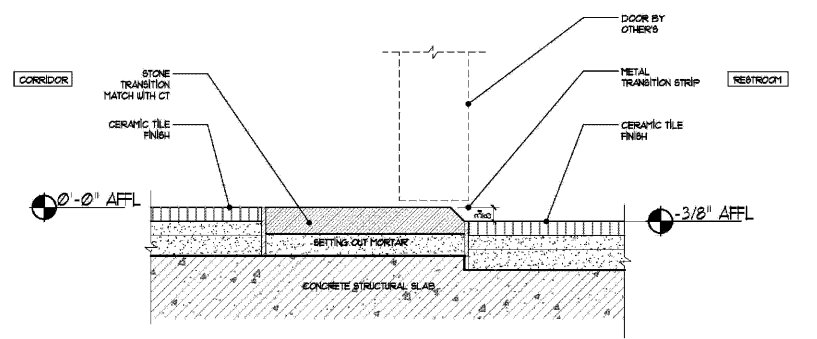
SHEET NO.
ID-501



3 FLOOR DETAIL
 Scale: 6"=1'-0"



2 TYPICAL FLOOR DETAIL
 Scale: 6"=1'-0"



1 TYP. FLOOR DETAIL @ RESTROOM
 Scale: 6"=1'-0"

Order Plans @ www.LDIDLine.com