

**MARRIOTT SAWGRASS
CABANA CLUB**

619 PONTE VEDRA BLVD
PONTE VEDRA BEACH, FL 32082

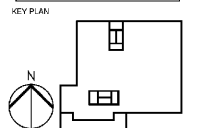
OWNER
WATERMARK CAPITAL PARTNERS, LLC
150 NORTH RIVERSIDE PLAZA SUITE 4000
CHICAGO, IL 60606

OWNER'S CONSULTANT
THE JOHN HARDY GROUP INC.
6085 BARKFIELD RD., SUITE 200
ATLANTA, GA 30328

CIVIL ENGINEER AND LANDSCAPE CONSULTANT
HOLEY-HORN
12740 GRAN BAY PARKWAY WEST
SUITE 2050
JACKSONVILLE, FL 32256

INTERIOR DESIGN CONSULTANT
H&M DESIGN
3216 NEBRASKA AVENUE, SANTA MONICA, CALIFORNIA 90404 U. S. A.

This drawing is for information only to be used by the contractor as a general arrangement of error conditions. It has been made from available information, however measurements are to be verified on project site. This drawing must be verified and approved prior to their detailing and fabrication.
This drawing is the property of HIRSCH-SEIDNER AND ASSOCIATES and is not to be reproduced or copied in whole or in part. It is only to be used for the project and site specifically identified herein and is not to be used on any other project. It is to be returned upon request.



REVISION NO.	DESCRIPTION	DATE

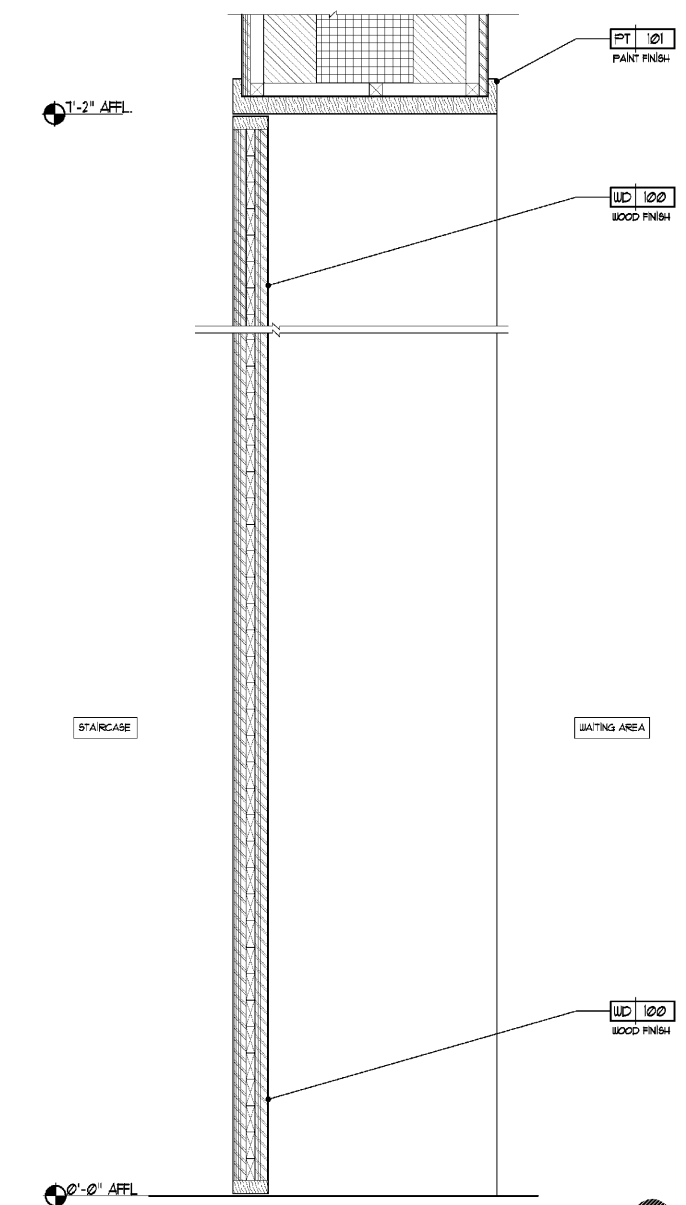
HKS PROJECT NUMBER
22808.001
DATE
05/22/2020
ISSUE
PERMIT SET

SHEET TITLE
**PUBLIC AREA - LEVEL 1&2
DOOR DETAILS**

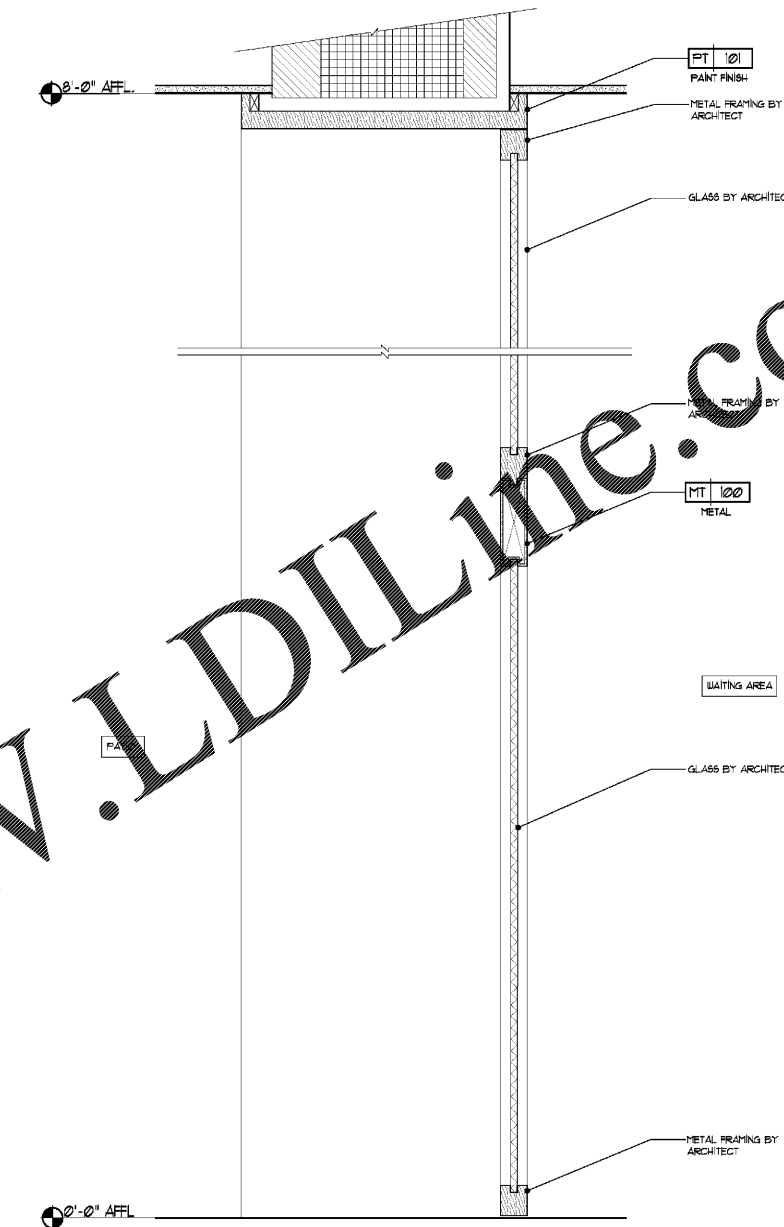
SHEET NO.
ID-201

www.LDILine.com

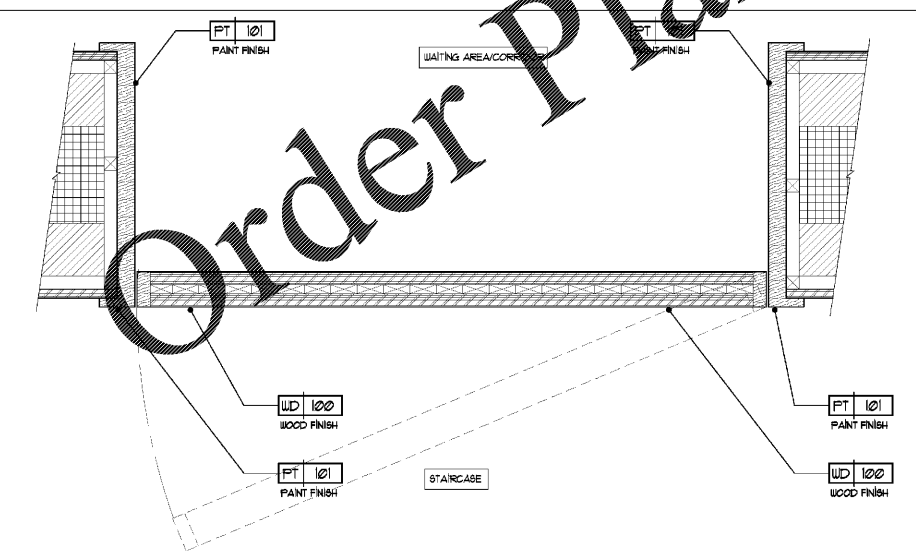
Order Plans @



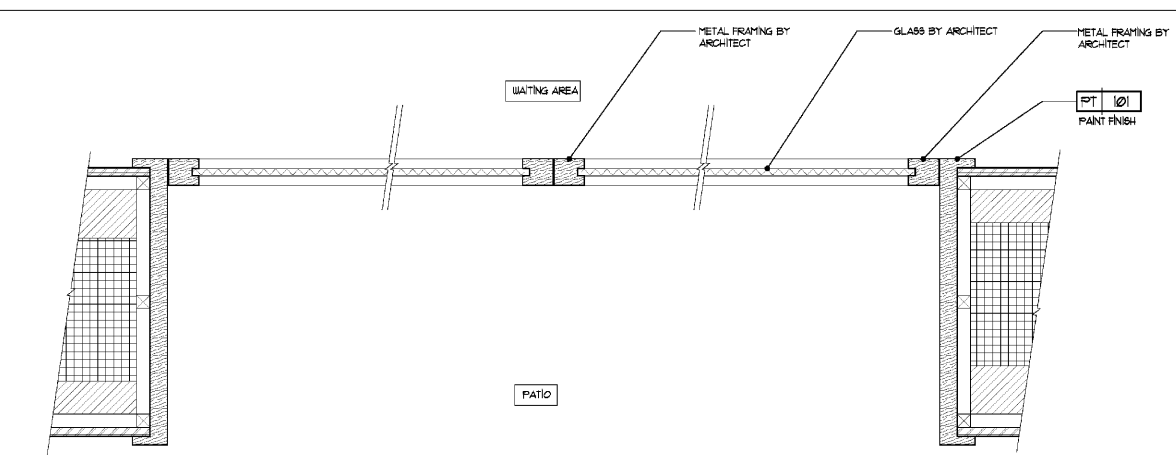
4 DETAIL (D2,D4)
Scale: 3"=1'-0"



2 DETAIL
Scale: 3"=1'-0"



3 DETAIL (D2,D4)
Scale: 3"=1'-0"



1 DETAIL
Scale: 3"=1'-0"