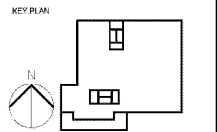


ARCHITECT
HKS ARCHITECTS, INC.
48A F002116
2020 SALZEDO ST, 4TH FLOOR
CORAL GABLES, FL 33134
STRUCTURAL CONSULTANT
THORNTON TOMASETTI
121 NE THIRD AVE., SUITE 1110
FORT LAUDERDALE, FL 33301-198
MEP CONSULTANT
THOMPSON FILE
50 TECHNOLOGY PKWY S, PEACHTREE CORNERS,
GA 30062
KITCHEN CONSULTANT
INNOVATIVE FOOD SERVICE
11101 NORTH 46TH STREET, TAMPA, FL 33617
WATERPROOFING
CONSULTANT
CDC USA
9070 Park Ln., Suite 400 Dallas, TX 75231
CODE & LIFE SAFETY
CONSULTANT
HOME ENGINEERS
121 LOWWATER CIR, NORWELL, MA 02061

MARRIOTT SAWGRASS
CABANA CLUB

819 PONTE VEDRA BLVD
PONTE VEDRA BEACH, FL 32082
OWNER
WATERMARK CAPITAL PARTNERS, LLC
120 NORTH RIVERSIDE PLAZA SUITE 4202
CHICAGO, IL 60655
OWNER'S CONSULTANT
THE JOHN HARRY GROUP INC.
8085 BARKFIELD RD. SUITE 200
ATLANTA, GA 30338
CIVIL ENGINEER AND
LANDSCAPE CONSULTANT
KIMLEY HORN
12740 GRAN BAY PARKWAY WEST
SUITE 2300
JACKSONVILLE, FL 32258
INTERIOR DESIGN CONSULTANT
HKS DESIGN
3215 NEBRASKA AVENUE, SANTA MONICA,
CALIFORNIA 90404 U. S. A.

This drawing is for information only to be used by the contractor as a general arrangement of interior conditions. It has been made from available information, however measurements are to be verified on project site. This drawing must be verified and approved prior to final detailing and fabrication.
This drawing is the property of HIRSCH BEIDER AND ASSOCIATES and is not to be reproduced or copied in whole or in part if as only to be used for the project and site specifically identified herein and is not to be used on any other project. It is to be returned upon request.

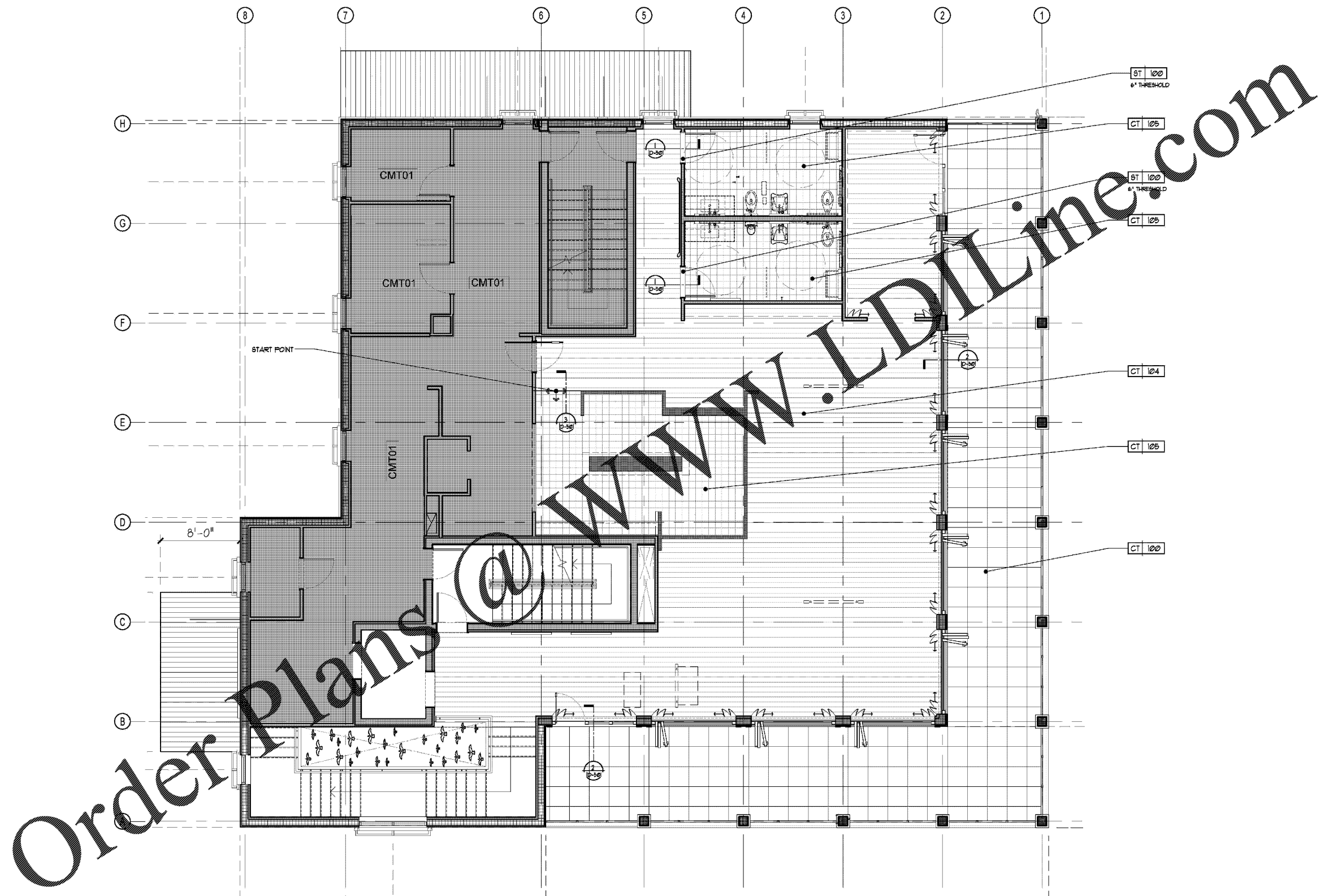


REVISION NO.	DESCRIPTION	DATE

HKS PROJECT NUMBER
22808.001
DATE
05/22/2020
ISSUE
PERMIT SET

SHEET TITLE
**PUBLIC AREA - LEVEL 2
FLOOR COVERING
PLAN**

SHEET NO.
FC2.00



FC FLOOR COVERING PLAN - LEVEL 2
SCALE : 1/4" = 1'-0"

Order Plans @

WWW.LDLINE.COM