

ARCHITECT
 HKS ARCHITECTS, INC.
 #AA F000119
 2020 SALZEDO ST., 4TH FLOOR
 CORAL GABLES, FL 33134

STRUCTURAL CONSULTANT
 HOBBS/TOMASETTI
 101 W. THIRD AVE., SUITE 1110
 FORT LAUDERDALE, FL 33301-1109

MEP CONSULTANT
 THOMPSON ENLE
 59 TECHNOLOGY PKWY S. PEACHTREE CORNERS,
 GA 30062

KITCHEN CONSULTANT
 INNOVATIVE FOOD SERVICE
 11121 NORTH 40TH STREET, TAMPA, FL 33617

WATERPROOFING CONSULTANT
 CDD USA
 2870 Park Ln., Suite 400 Dallas, TX 75231

CODE & LIFE SAFETY CONSULTANT
 HOWE ENGINEERS
 101 LONGWATER CIR. NORWELL, MA 02051

MARRIOTT SAWGRASS CABANA CLUB

#19 PONTE VEDRA BLVD
 PONTE VEDRA BEACH, FL 32082

OWNER
 WATERMARK CAPITAL PARTNERS, LLC
 150 NORTH RIVERSIDE PLAZA SUITE 4000
 CHICAGO, IL 60603

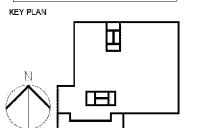
OWNER'S CONSULTANT
 THE JOHN HARVEY GROUP INC.
 6395 BARFIELD RD. SUITE 200
 ATLANTA, GA 30328

CIVIL ENGINEER AND LANDSCAPE CONSULTANT
 KIMLEY-HORN
 12740 GRAN BAY PARKWAY WEST
 SUITE 2303
 JACKSONVILLE, FL 32256

INTERIOR DESIGN CONSULTANT
 HBA DESIGN
 3218 NEBRASKA AVENUE, SANTA MONICA,
 CALIFORNIA 90404 U.S.A.

This drawing is for information only to be used by the contractor as a general arrangement of interior conditions. It has been made from available information, however measurements are to be verified on project site. This drawing must be verified and approved prior to final ordering and fabrication.

This drawing is the property of HERSHCO BLOOMER AND ASSOCIATES and is not to be reproduced or copied in whole or in part. It is to be used for the project and site specifically identified herein and is not to be used on any other project. It is to be returned upon request.



| REVISION NO. | DESCRIPTION | DATE |
|--------------|-------------|------|
| | | |
| | | |
| | | |
| | | |
| | | |
| | | |
| | | |
| | | |
| | | |
| | | |
| | | |

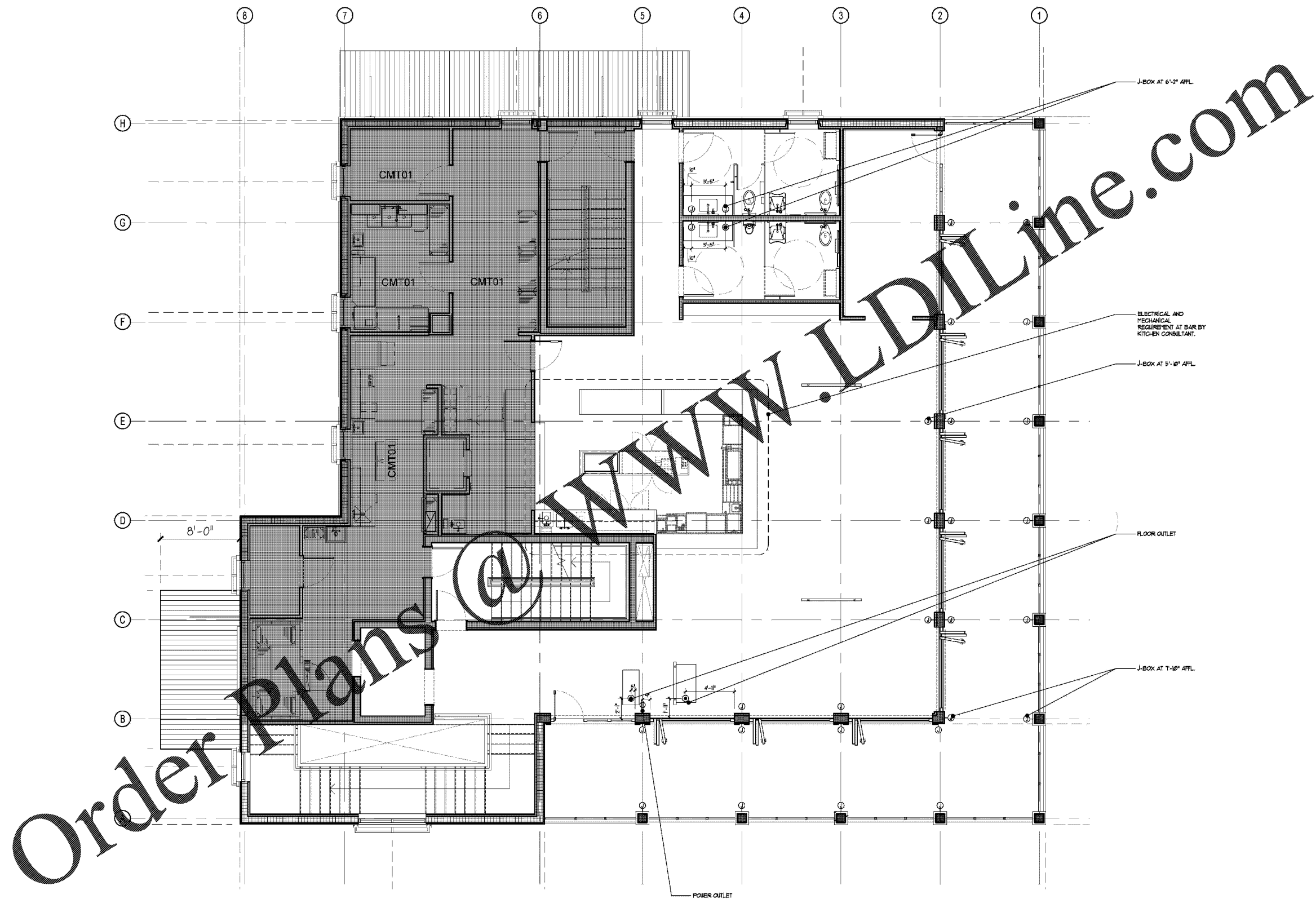
HKS PROJECT NUMBER
22808.001

DATE
05/22/2020

ISSUE
PERMIT SET

SHEET TITLE
**PUBLIC AREA - LEVEL 2
 ELECTRICAL / MECHANICAL
 PLAN**

SHEET NO.
EM2.00



EM ELECTRICAL / MECHANICAL PLAN - LEVEL 2
 SCALE : 1/4" = 1'-0"

Order Plans @

WWW.LDILine.com