

## MARRIOTT SAWGRASS CABANA CLUB

618 PONTE VEDRA BLVD  
PONTE VEDRA BEACH, FL 32082

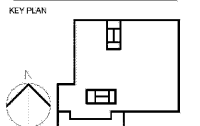
**OWNER**  
WATERMARK CAPITAL PARTNERS, LLC  
150 NORTH RIVERSIDE PLAZA SUITE 4000  
CHICAGO, IL 60609

**OWNER'S CONSULTANT**  
THE JOHN HARDY GROUP INC  
8388 BARKFIELD RD., SUITE 200  
ATLANTA, GA 30338

**CIVIL ENGINEER AND LANDSCAPE CONSULTANT**  
KIMLEY HORN  
12740 GRAN BAY PARKWAY WEST  
SUITE 200  
JACKSONVILLE, FL 32256

**INTERIOR DESIGN CONSULTANT**  
HKS DESIGN  
3216 NEBRASKA AVENUE, SANTA MONICA,  
CALIFORNIA 90404 U.S.A.

This drawing is for information only to be used by the contractor as a general arrangement of interior conditions. It has been made from available information, however measurements are to be verified on project site. This drawing must be verified and approved prior to final ordering and fabrication.  
This drawing is the property of HKS DESIGN AND ASSOCIATES and is not to be reproduced or copied in whole or in part. It is to be used for the project and is not to be used on any other project. It is to be returned upon request.

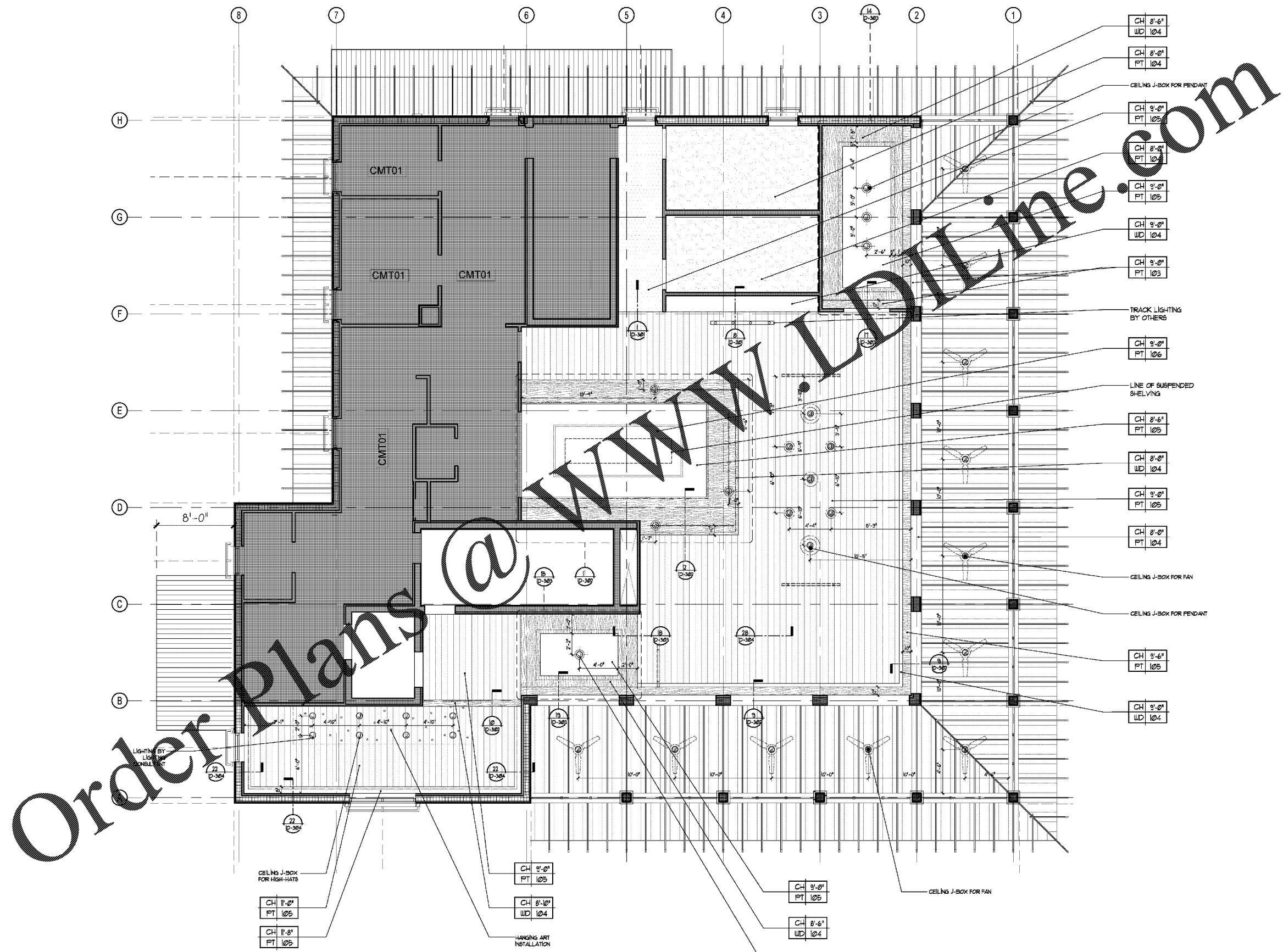


REVISION NO.	DESCRIPTION	DATE

HKS PROJECT NUMBER  
**22808.001**  
DATE  
**05/22/2020**  
ISSUE  
**PERMIT SET**

SHEET TITLE  
**PUBLIC AREA - LEVEL 2 REFLECTED CEILING PLAN**

SHEET NO.  
**RC2.00**



**RC REFLECTED CEILING PLAN - LEVEL 2**  
SCALE : 1/4" = 1'-0"

Order Plans @

WWW.DLINE.COM