

ARCHITECT
 HKS ARCHITECTS, INC.
 #AA F002119
 2020 SALZEDO ST., 4TH FLOOR
 CORAL GABLES, FL 33134

STRUCTURAL CONSULTANT
 THORNTON TOMASETTI
 101 NE THIRD AVE., SUITE 1170
 FORT LAUDERDALE, FL 33301-1190

MEP CONSULTANT
 THOMPSON DUE
 50 TECHNOLOGY PROMY B. PEACHTREE CORNERS,
 GA 30052

KITCHEN CONSULTANT
 INNOVATIVE FOOD SERVICE
 11101 NORTH 46TH STREET, TAMPA, FL 33617

WATERPROOFING CONSULTANT
 CDO USA
 8070 Park Ln., Suite 400 Dallas, TX 75231

CODE & LIFE SAFETY CONSULTANT
 HOWE ENGINEERS
 101 LONGWATER CIR, NORWELL, MA 02061

MARRIOTT SAWGRASS CABANA CLUB

619 PONTE VEDRA BLVD
 PONTE VEDRA BEACH, FL 30562

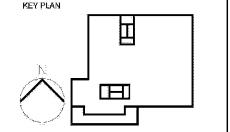
OWNER
 WATERMARK CAPITAL PARTNERS, LLC
 150 NORTH RIVERSIDE PLAZA SUITE 400
 CHICAGO, IL 60606

OWNER'S CONSULTANT
 THE JOHN HARDY GROUP INC.
 6000 BARKER DRIVE SUITE 200
 ATLANTA, GA 30338

CIVIL ENGINEER AND LANDSCAPE CONSULTANT
 VMSLEY NORTH
 12740 GRAN BAY PARKWAY WEST
 SUITE 200
 JACKSONVILLE, FL 32259

INTERIOR DESIGN CONSULTANT
 HKS DESIGN
 3215 NEBRASKA AVENUE, SANTA MONICA,
 CALIFORNIA 90404 U.S.A.

This drawing is for information only to be used by the contractor as a general statement of intent. It has been made from available information, however measurements are to be verified on project site. This drawing must be verified and approved prior to final ordering and fabrication. This drawing is the property of HKS/HKS DESIGN AND ASSOCIATES and is not to be reproduced or copied in whole or in part, it is to be used only for the project and one specifically identified herein and is not to be used on any other project. It is to be returned upon request.



REVISION NO.	DESCRIPTION	DATE

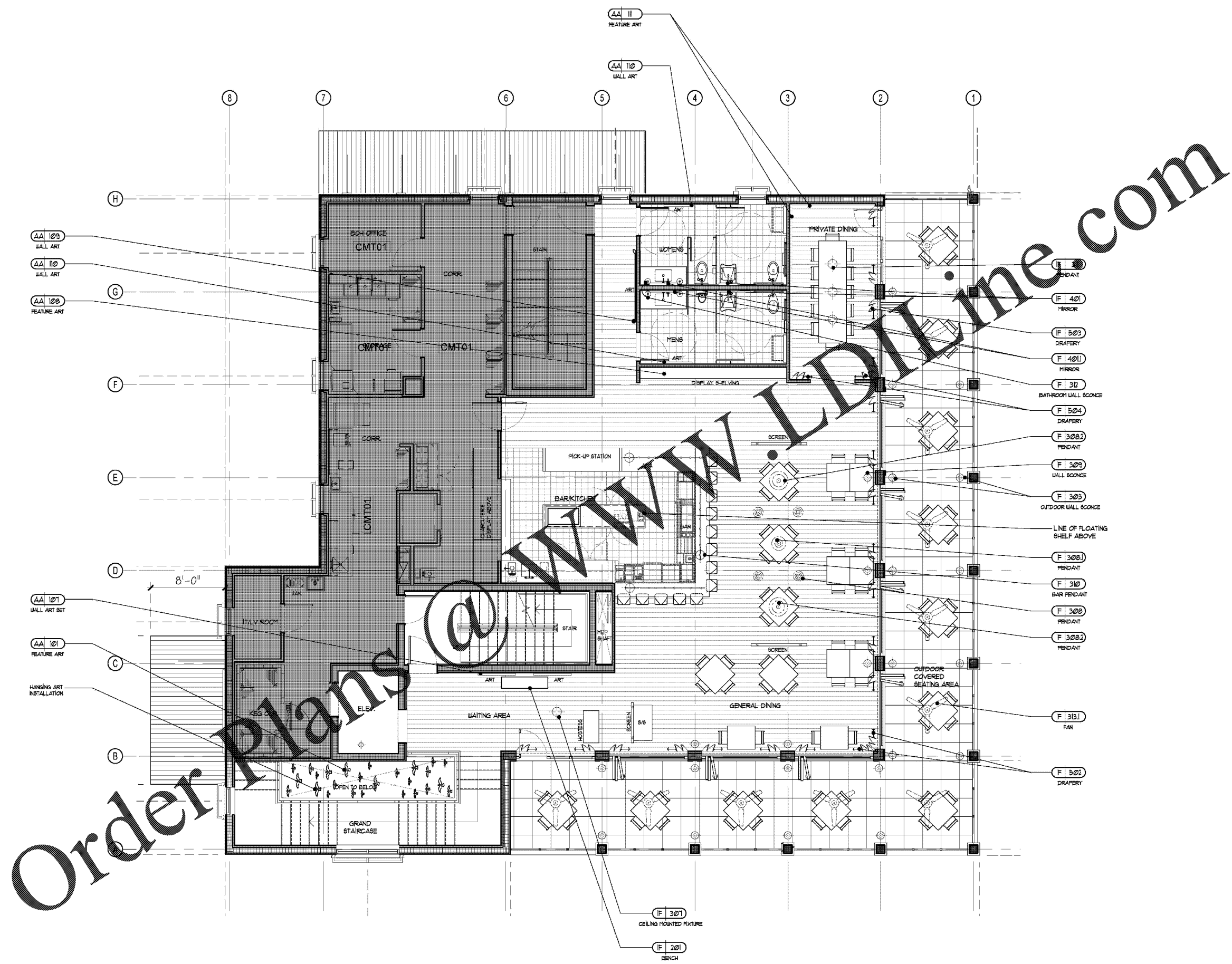
HKS PROJECT NUMBER
22808.001

DATE
05/22/2020

ISSUE
PERMIT SET

SHEET TITLE
**PUBLIC AREA - LEVEL 2
 FIXTURE / FURNISHING
 PLAN**

SHEET NO.



FF FIXTURE/FURNISHING PLAN - LEVEL 2 CLUB DINING
 SCALE : 1/4" = 1'-0"

SEAT COUNT.
 INDOOR = 61 PAX.
 OUTDOOR = 44 PAX.
 TOTAL = 105 PAX.