

**ARCHITECT**  
HKS ARCHITECTS, INC.  
AAA F500119  
2020 BALZEDO ST., 4TH FLOOR  
CORAL GABLES, FL 33134

**STRUCTURAL CONSULTANT**  
THORNTON TOMASETTI  
101 NE THIRD AVE., SUITE 1110  
FORT LAUDERDALE, FL 33301-1199

**MEP CONSULTANT**  
THORNTON TOMASETTI  
50 TECHNOLOGY PKWY S. PEACHTREE CORNERS,  
GA 30062

**KITCHEN CONSULTANT**  
INNOVATIVE FOOD SERVICE  
11131 NORTH 46TH STREET, TAMPA, FL 33617

**WATERPROOFING CONSULTANT**  
CDC USA  
8070 PARK LN., SUITE 400 DALLAS, TX 75221

**CODE & LIFE SAFETY CONSULTANT**  
HOWE ENGINEERS  
101 LONGWATER CIR. NORWELL, MA 02061

**MARRIOTT SAWGRASS  
CABANA CLUB**

619 PONTE VEDRA BLVD  
PONTE VEDRA BEACH, FL 32082

**OWNER**  
WATERMARK CAPITAL PARTNERS, LLC  
150 NORTH WINDSBOROUGH PLAZA - SUITE 4000  
CHICAGO, IL 60606

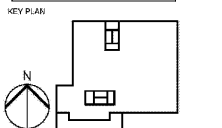
**OWNER'S CONSULTANT**  
THE JOHN HENRY GROUP INC.  
6080 BARKFIELD RD., SUITE 200  
ATLANTA, GA 30328

**CIVIL ENGINEER AND  
LANDSCAPE CONSULTANT**  
VOLUMEYARD  
12740 GRAN BAY PARKWAY WEST  
SUITE 2030  
JACKSONVILLE, FL 32256

**INTERIOR DESIGN CONSULTANT**  
H&M DESIGN  
3215 NEBRASKA AVENUE, SANTA MONICA,  
CALIFORNIA 90404 U. S. A.

This drawing is for information only to be used by the contractor as a general arrangement of error conditions. It has been made from available information, however measurements are to be verified on project site. This drawing must be verified and approved prior to their detailing and fabrication.

This drawing is the property of HIRSHCH-BEDNER AND ASSOCIATES and is not to be reproduced or used in whole or in part, it is only to be used for the project and site specifically identified herein and is not to be used on any other project. It is to be returned upon request.



REVISION NO.	DESCRIPTION	DATE

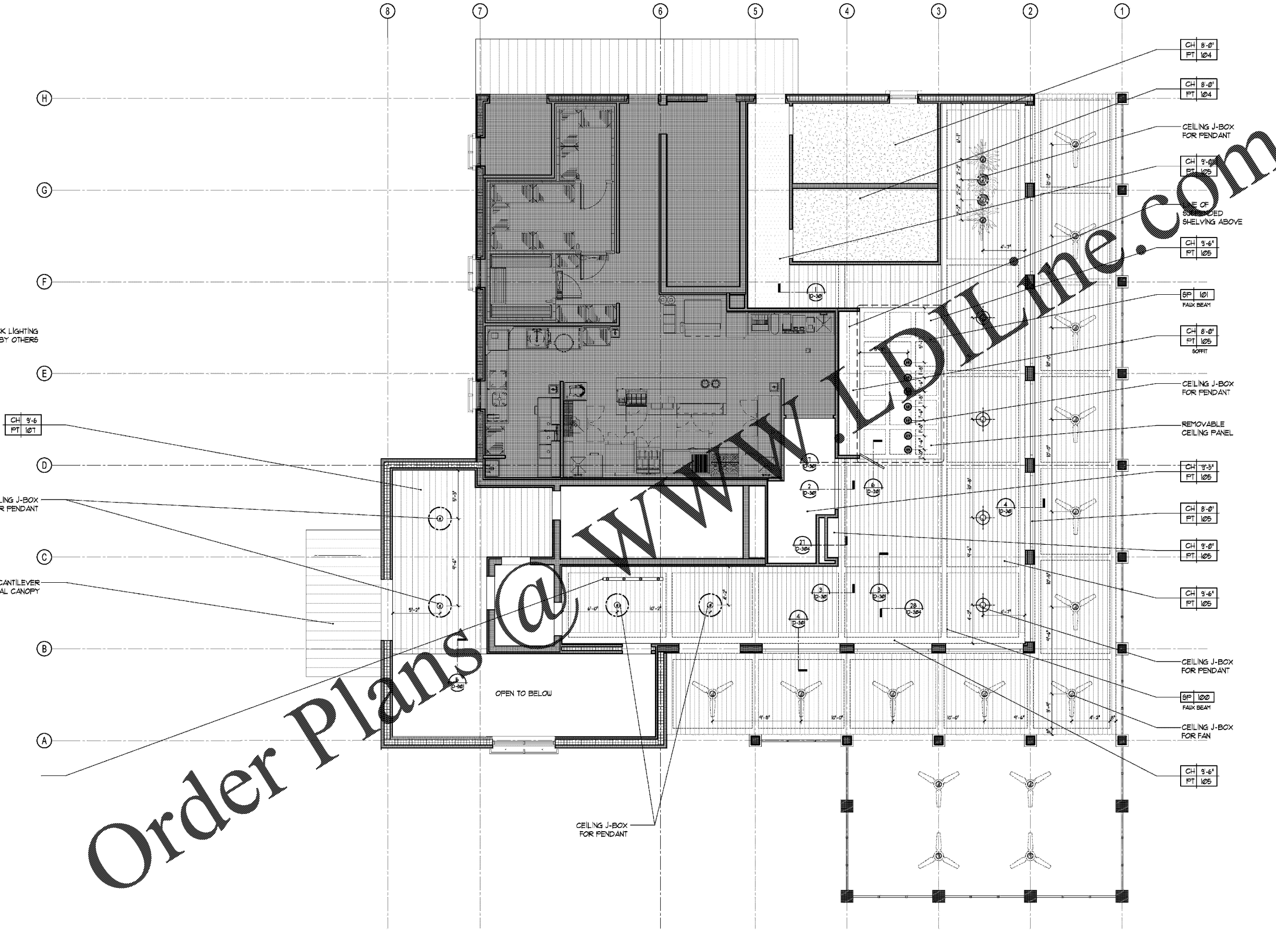
HKS PROJECT NUMBER  
**22808.001**

DATE  
**05/22/2020**

HKS PERMIT SET

SHEET TITLE  
**PUBLIC AREA - LEVEL 1  
REFLECTED CEILING PLAN**

SHEET NO.  
**RC1.00**



**RC REFLECTED CEILING PLAN - LEVEL 1**  
SCALE : 1/4" = 1'-0"

Order Plans @ WWW.ArchitecturalPlans.com

WWW.ArchitecturalPlans.com

PLOT DATE: 07/08/2020 12:50:34 PM