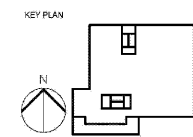


JOHN G. BORRELL, STATE OF FLORIDA,
REGISTERED PROFESSIONAL ENGINEER, LICENSE NO. AR99082,
HEREBY HAS BEEN LEGALLY BOUND AND SEALED BY
STATE OF FLORIDA BOARD OF PROFESSIONAL ENGINEERS
AND ARCHITECTS. THESE PRINTED COPIES OF THIS DOCUMENT ARE NOT
VALID UNLESS THEY BE BOUND BY ANY ELECTRONIC
COPIES.



REVISION NO.	DESCRIPTION	DATE

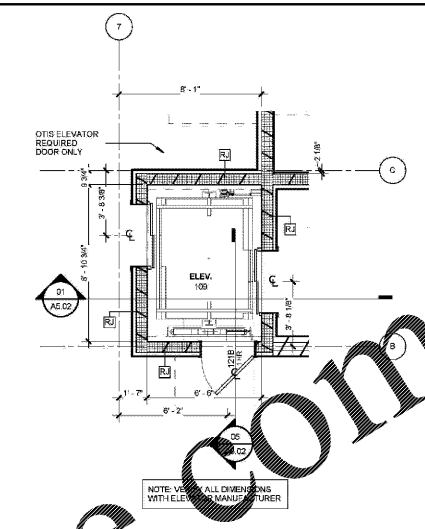
HKS PROJECT NUMBER
22808.001

DATE:
05/22/2020

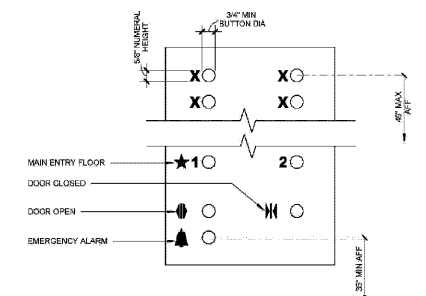
ISSUE:
PERMIT SET

SHEET TITLE:
**ELEVATOR
DETAILS**

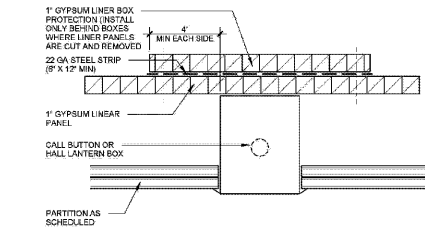
SHEET NO.
A8.20



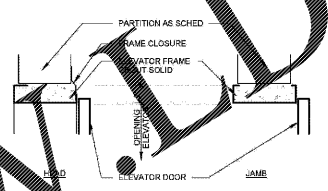
04 ENLARGED ELEVATOR
3" = 1'-0"



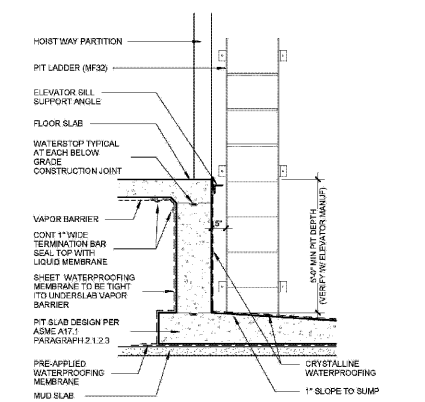
08 ELEVATOR PANEL DETAIL
3" = 1'-0"



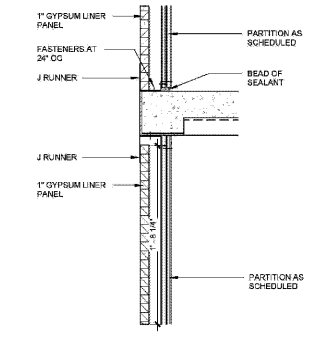
**03 SHAFTWALL PENETRATION DETAIL
AT CALL BOX AND OR HALL LANTERN**
3" = 1'-0"



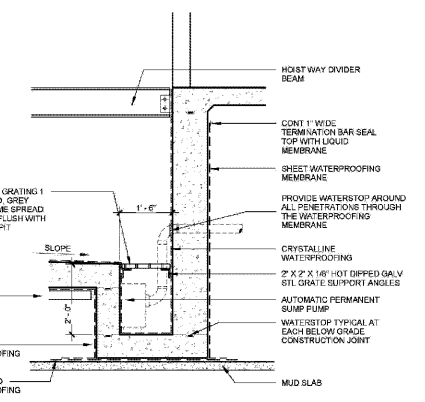
**07 ELEVATOR DOOR DETAIL
MASONRY/CONCRETE**
1 1/2" = 1'-0"



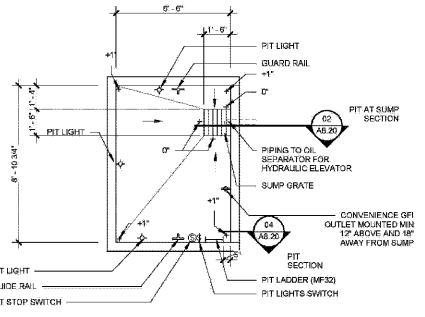
**02 PIT SECTION WITH
POSITIVE SIDE WATERPROOFING**
1/2" = 1'-0"



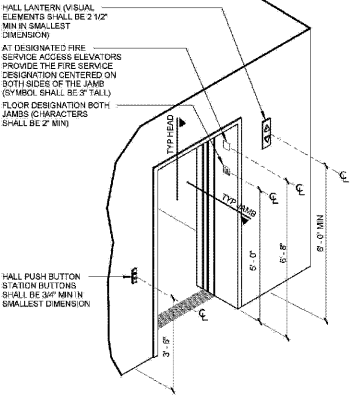
06 SHAFTWALL AT ELEVATOR
1 1/2" = 1'-0"



**05 PIT SECTION AT SUMP WITH
POSITIVE SIDE WATERPROOFING**
1/2" = 1'-0"



01 ELEVATOR PIT PLAN (TYPICAL 1 CAB)
1/4" = 1'-0"



**09 ELEVATOR ENTRY
AND MOUNTING HEIGHTS**
NTS

Order Plans @
www.DILine.com