

**ARCHITECT**  
HKS ARCHITECTS, INC.  
AAA F000119  
2030 SALZEDO ST., 4TH FLOOR  
CORAL GABLES, FL 33134

**STRUCTURAL CONSULTANT**  
THE RYAN TOMASETTI  
101 NE THIRD AVE., SUITE 1170  
FORT LAUDERDALE, FL 33301-1199

**MEP CONSULTANT**  
THOMPSON E-FILE  
50 TECHNOLOGY PKWY S. PEACHTREE CORNERS,  
GA 30062

**KITCHEN CONSULTANT**  
INNOVATIVE FOOD SERVICE  
11101 NORTH 40TH STREET, TAMPA, FL 33617

**WATERPROOFING CONSULTANT**  
CDC USA  
8070 Park Ln., Suite 400 Dallas, TX 75221

**CODE & LIFE SAFETY CONSULTANT**  
HOWE ENGINEERS  
101 LONGWATER CIR. NORWELL, MA 02061

## MARRIOTT SAWGRASS CABANA CLUB

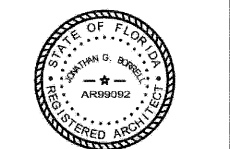
810 PONTE VEDRA BLVD  
PONTE VEDRA BEACH, FL 32082

**OWNER**  
WATERMARK CAPITAL PARTNERS, LLC  
100 NORTH RIVERSIDE PLAZA, SUITE 4000  
CHICAGO, IL 60606

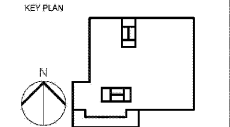
**OWNER'S CONSULTANT**  
THE JOHN HARDY GROUP INC.  
6085 SHELLEY RD., SUITE 200  
ATLANTA, GA 30328

**CIVIL ENGINEER AND LANDSCAPE CONSULTANT**  
KIMLEY-HORN  
12740 GRAN BAY PARKWAY WEST  
SUITE 2200  
JACKSONVILLE, FL 32256

**INTERIOR DESIGN CONSULTANT**  
H&A DESIGN  
3016 MERRILL AVENUE, SANTA MONICA,  
CALIFORNIA 90404 U.S.A.



JOHN H. G. SPIRELL, STATE OF FLORIDA,  
REGISTERED PROFESSIONAL ENGINEER, LICENSE NO. AR99082  
THIS FORM HAS BEEN ELECTRONICALLY SIGNED AND SEALED BY  
JOHN H. G. SPIRELL, LICENSE NO. AR99082  
PRINTED COPIES OF THIS DOCUMENT ARE NOT  
VALIDATED AND SHOULD NOT BE USED FOR ANY  
LEGAL PURPOSES WITHOUT THE ORIGINAL ELECTRONIC COPIES.



REVISION NO.	DESCRIPTION	DATE

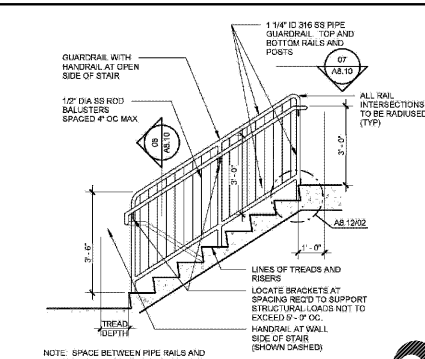
HKS PROJECT NUMBER  
**22808.001**

DATE  
**05/22/2020**

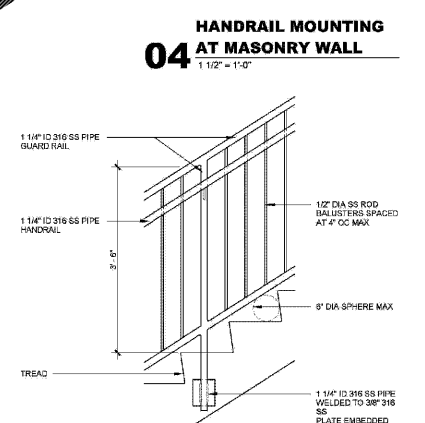
ISSUE  
**PERMIT SET**

SHEET TITLE  
**CONCRETE STAIR SECTION AND DETAIL**

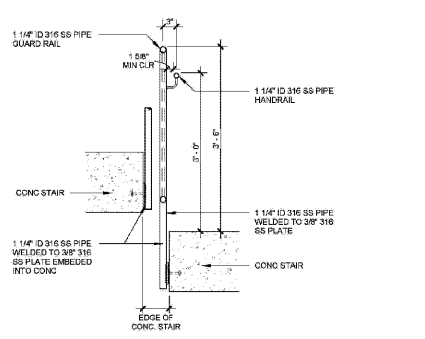
SHEET NO.  
**A8.10**



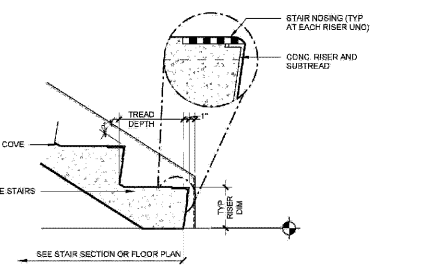
**05 STAIR RAILING ELEVATION**  
3/8" = 1'-0"



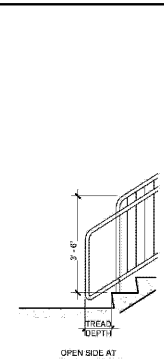
**04 HANDRAIL MOUNTING AT MASONRY WALL**  
1 1/2" = 1'-0"



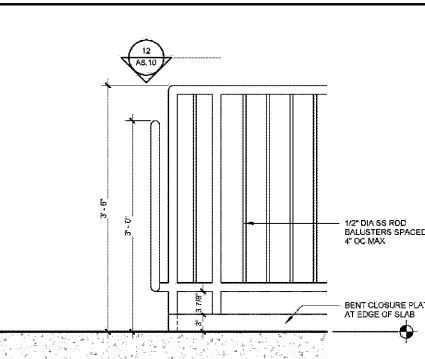
**03 CONCRETE STAIR RAILING ELEVATION**  
3/4" = 1'-0"



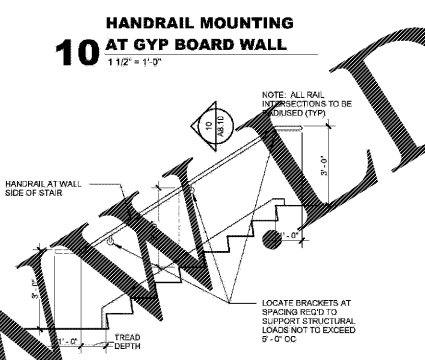
**02 CONCRETE STAIR AND GUARDRAIL SECTION**  
3/4" = 1'-0"



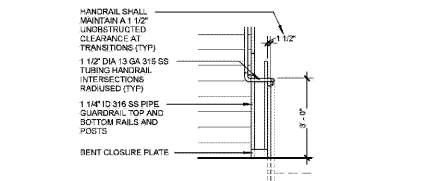
**01 CONCRETE STAIR SLAB CONNECTION**  
1" = 1'-0"



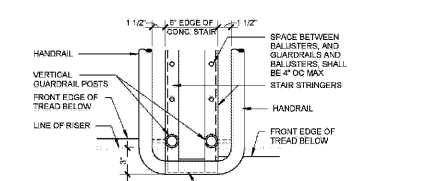
**11 RAILING AND GUARDRAIL AT TOP LANDING**  
1" = 1'-0"



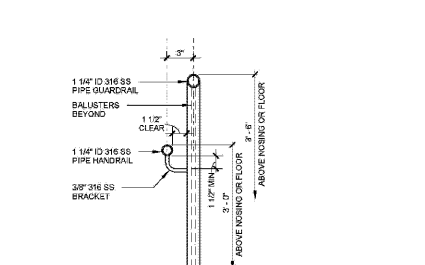
**10 HANDRAIL MOUNTING AT GYP BOARD WALL**  
1 1/2" = 1'-0"



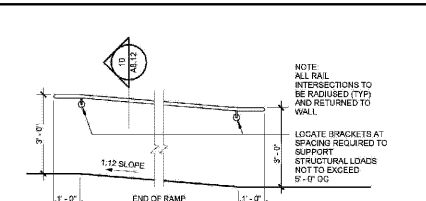
**09 STAIR RAILING AT WALL**  
3/8" = 1'-0"



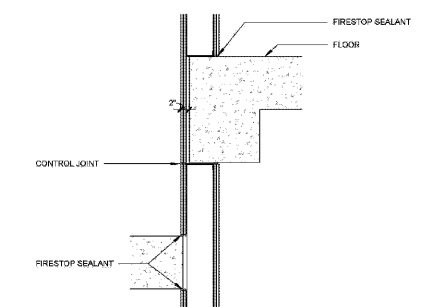
**08 STAIR RAILING AT TRANSITION**  
3/8" = 1'-0"



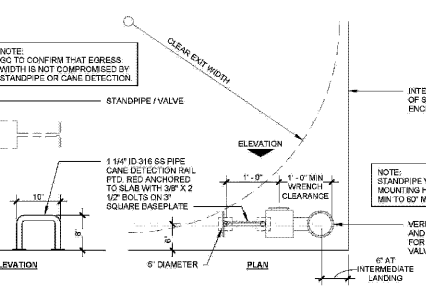
**07 HANDRAIL AND GUARDRAIL AT LANDING PLAN**  
1 1/2" = 1'-0"



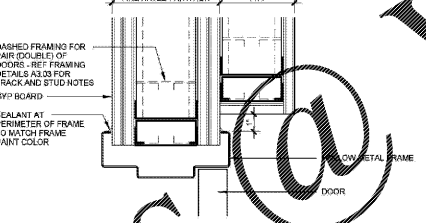
**17 RAMP RAILING AT WALL**  
3/8" = 1'-0"



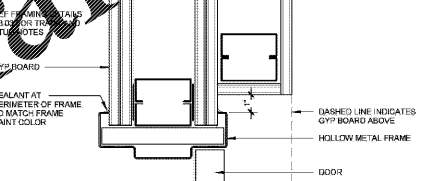
**16 STAIR ENCLOSURE AT CONCRETE RUN AND LANDING**  
3/4" = 1'-0"



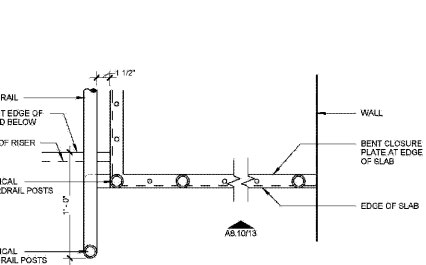
**15 TYPICAL STANDPIPE**  
3/4" = 1'-0"



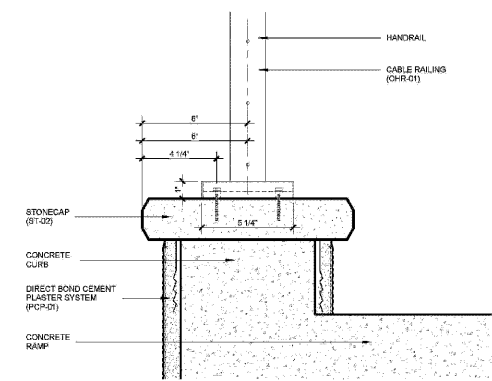
**14 HEAD DETAIL AT STAIR DOOR**  
3" = 1'-0"



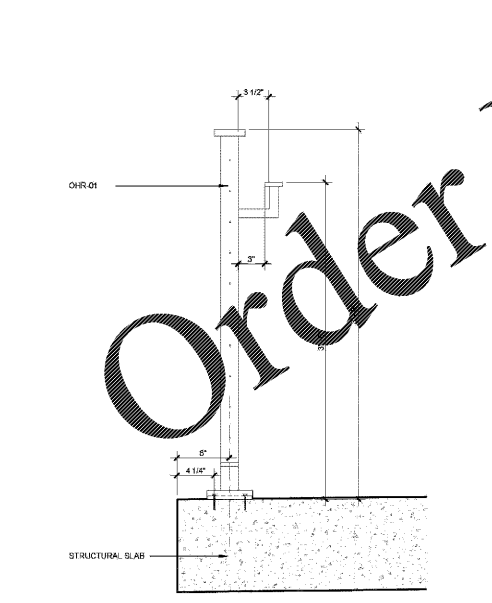
**13 JAMB DETAIL AT STAIR DOOR**  
3" = 1'-0"



**12 HANDRAIL AND GUARDRAIL AT TOP LANDING**  
1 1/2" = 1'-0"



**19 RAILING TOP MOUNTING DETAIL**  
3" = 1'-0"



**18 RAILING TOP MOUNTING DETAIL**  
1 1/2" = 1'-0"

Order Plans @ WWW.DILine.com