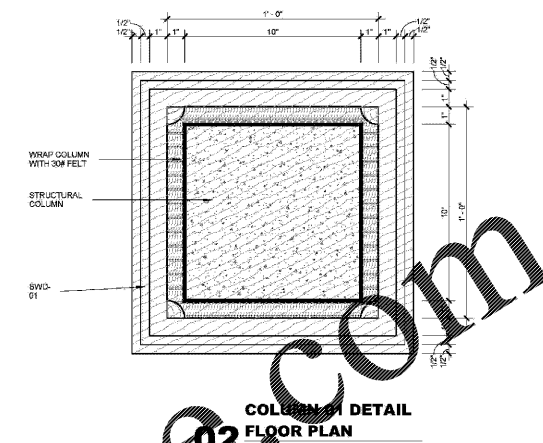
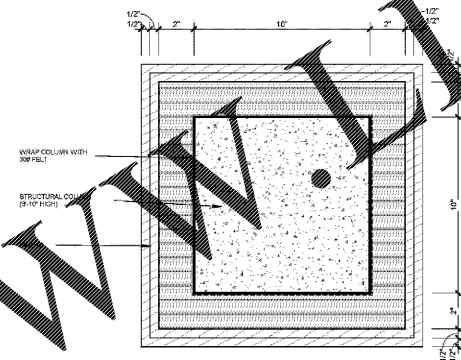


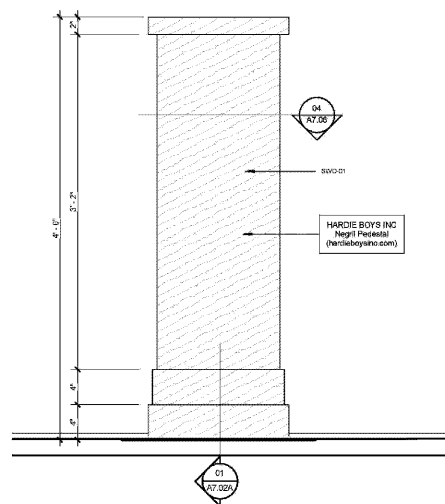
Order Plans @ WWW.DIline.com



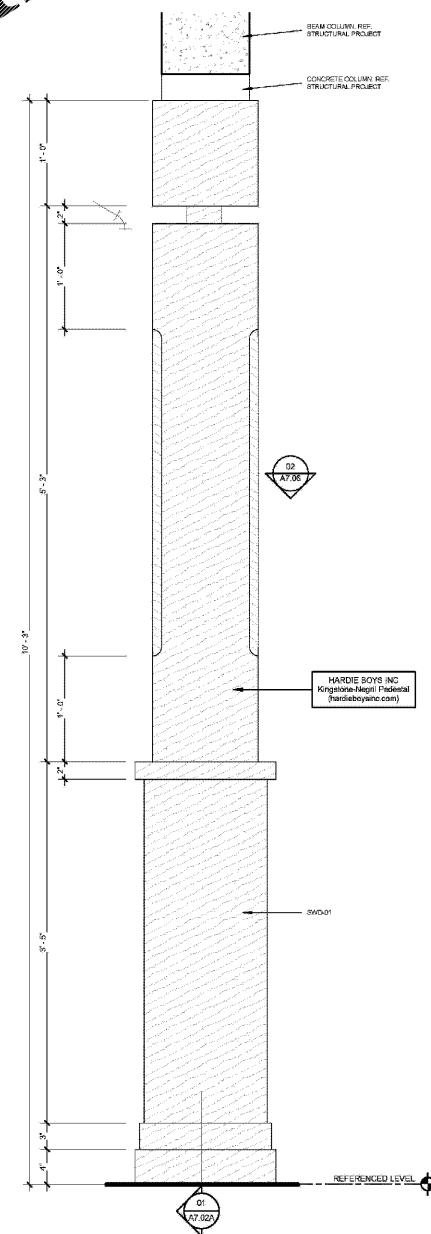
COLUMN 01 DETAIL FLOOR PLAN
3" = 1'-0"



COLUMN 02 DETAIL FLOOR PLAN
3" = 1'-0"



COLUMN 02 DETAIL ELEVATION
1 1/2" = 1'-0"



COLUMN 01 DETAIL ELEVATION
1 1/2" = 1'-0"

HKS

ARCHITECT
HKS ARCHITECTS, INC.
AAA F000119
2030 SAULEED ST, 4TH FLOOR
CORAL GABLES, FL 33134

STRUCTURAL CONSULTANT
THE RYAN TOMASETTI
101 NE THIRD AVE, SUITE 1170
FORT LAUDERDALE, FL 33301-1199

MEP CONSULTANT
THOMPSON E-FILE
53 TECHNOLOGY PKWY S, PEACHTREE CORNERS,
GA 30082

KITCHEN CONSULTANT
INNOVATIVE FOOD SERVICE
11101 NORTH 40TH STREET, TAMPA, FL 33617

WATERPROOFING CONSULTANT
CDC USA
8070 Park Ln., Suite 400 Dallas, TX 75221

CODE & LIFE SAFETY CONSULTANT
HOWE ENGINEERS
101 LONGWATER CIR. NORWELL, MA 02061

**MARRIOTT SAWGRASS
CABANA CLUB**

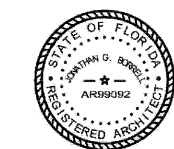
819 PONTE VEDRA BLVD
PONTE VEDRA BEACH, FL 32082

OWNER
WATERMARK CAPITAL PARTNERS, LLC
100 NORTH RIVERSIDE PLAZA SUITE 4000
CHICAGO, IL 60606

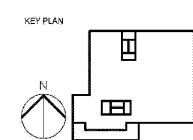
OWNER'S CONSULTANT
THE JOHN HARDY GROUP INC.
6085 DANFELD RD., SUITE 200
ATLANTA, GA 30328

CIVIL ENGINEER AND LANDSCAPE CONSULTANT
KIMLEY-HORN
12740 GRAN BAY PARKWAY WEST
SUITE 2200
JACKSONVILLE, FL 32256

INTERIOR DESIGN CONSULTANT
HBA DESIGN
3016 MERRILL AVENUE, SANTA MONICA,
CALIFORNIA 90404 U.S.A.



JOHN HANIG & SONNELL, STATE OF FLORIDA, REGISTERED PROFESSIONAL ENGINEER, LICENSE NO. AR39982. THESE PLANS HAVE BEEN EXAMINED AND APPROVED BY MATTHEW G. BURRELL, REGISTERED PROFESSIONAL ENGINEER, LICENSE NO. AR39982. PRINTED COPIES OF THIS DOCUMENT ARE NOT VALID UNLESS SIGNED AND SEALED AND THE SIGNATURE HAS BE VERIFIED BY AN ELECTRONIC COPY.



REVISION NO.	DESCRIPTION	DATE

HKS PROJECT NUMBER
22808.001
DATE:
05/22/2020
ISSUE:
PERMIT SET

SHEET TITLE
COLUMNS DETAILS

SHEET NO.
A7.06