

## MARRIOTT SAWGRASS CABANA CLUB

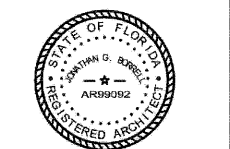
810 PONTE VEDRA BLVD  
PONTE VEDRA BEACH, FL 32082

**OWNER**  
WATERMARK CAPITAL PARTNERS, LLC  
100 NORTH RIVERSIDE PLAZA SUITE 4000  
CHICAGO, IL 60606

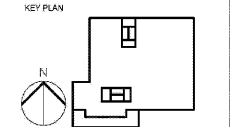
**OWNER'S CONSULTANT**  
THE JOHN HARDY GROUP INC.  
6085 SHELLEY RD., SUITE 200  
ATLANTA, GA 30328

**CIVIL ENGINEER AND LANDSCAPE CONSULTANT**  
KIMLEY-HORN  
12740 GRAY BAY PARKWAY WEST  
SUITE 2200  
JACKSONVILLE, FL 32256

**INTERIOR DESIGN CONSULTANT**  
H&A DESIGN  
3016 MERRILL AVENUE, SANTA MONICA,  
CALIFORNIA 90404 U.S.A.



JOHN THOMAS G. BURRELL, STATE OF FLORIDA, REGISTERED PROFESSIONAL ENGINEER, LICENSE NO. AR939082. THIS PLAN HAS BEEN DIGITALLY SIGNED AND SEALED BY JOHN THOMAS G. BURRELL, ON 05/22/2020. PRINTED COPIES OF THIS DOCUMENT ARE NOT VALIDATED FOR USE AND REALITY UNLESS THE SIGNATURE HAS BEEN VERIFIED BY ELECTRONIC COPIES.



REVISION NO.	DESCRIPTION	DATE

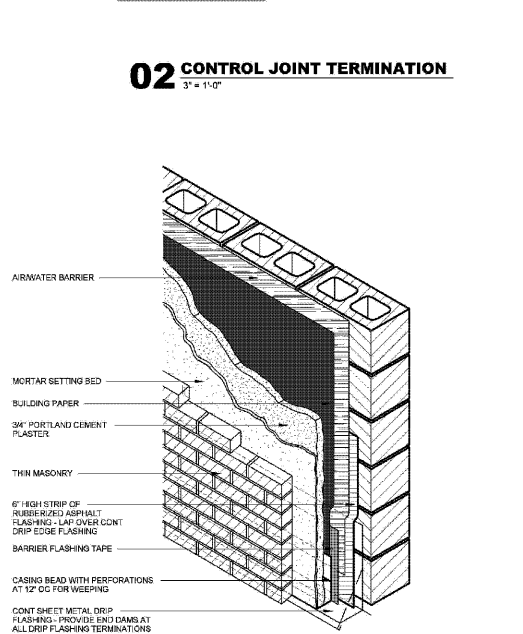
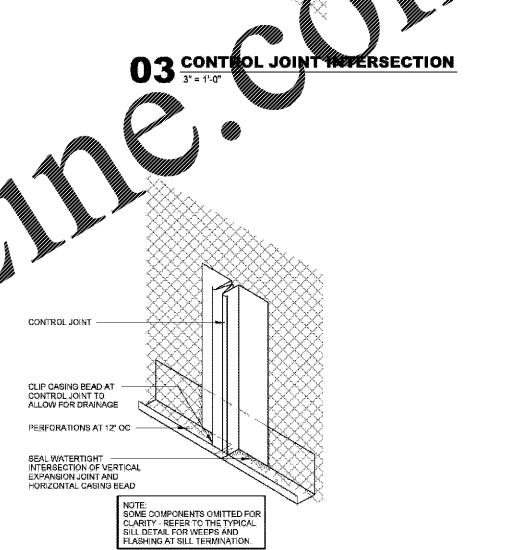
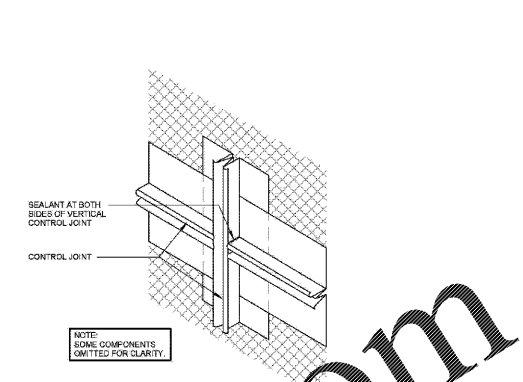
HKS PROJECT NUMBER  
**22808.001**

DATE:  
**05/22/2020**

ISSUE:  
**PERMIT SET**

SHEET TITLE  
**STONE DETAILS**

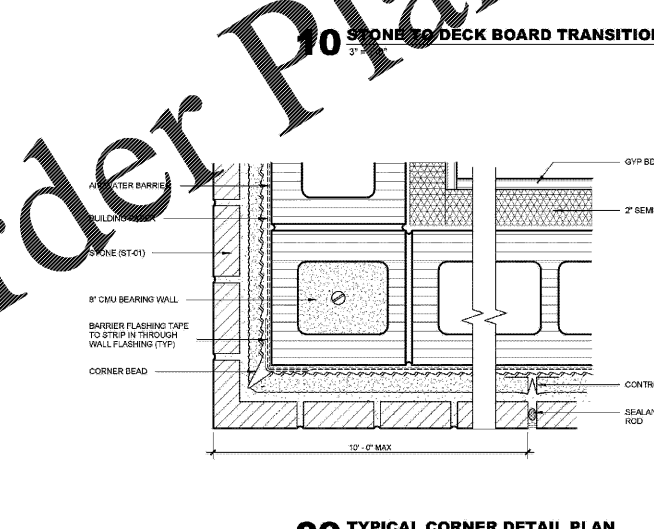
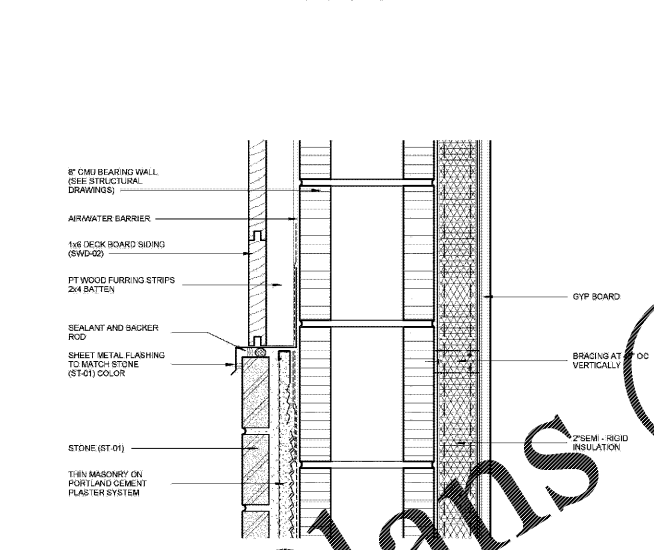
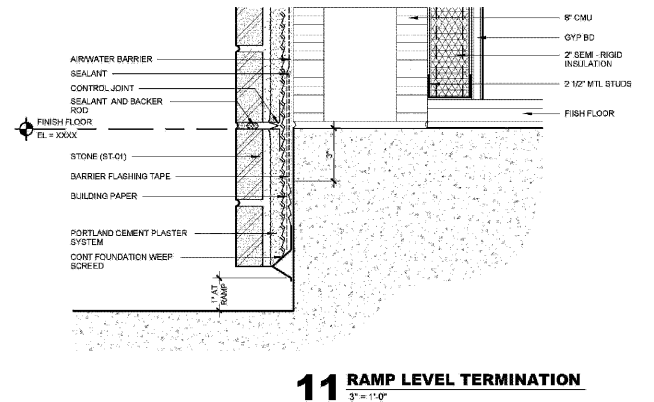
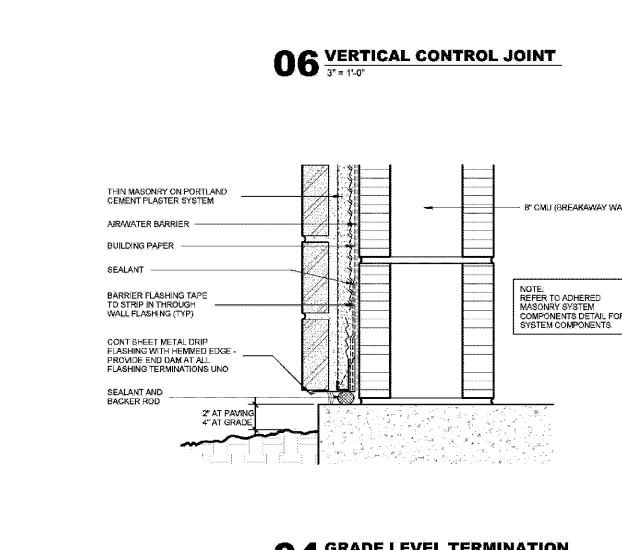
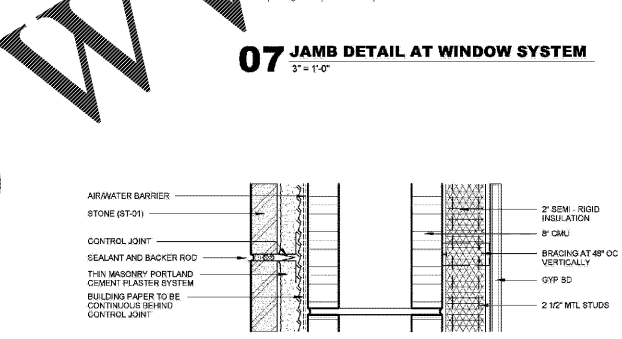
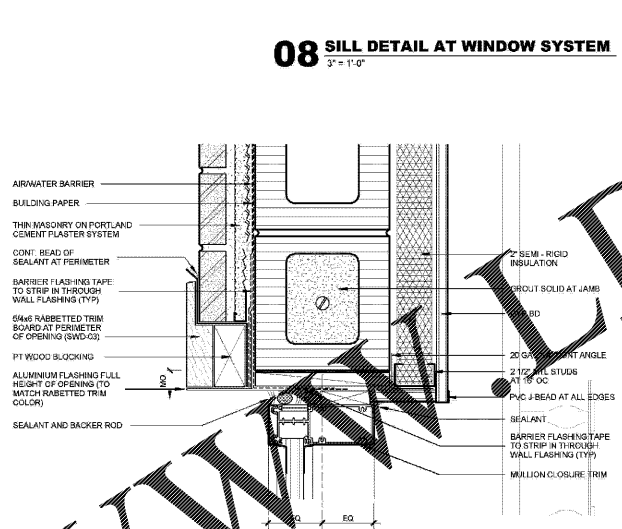
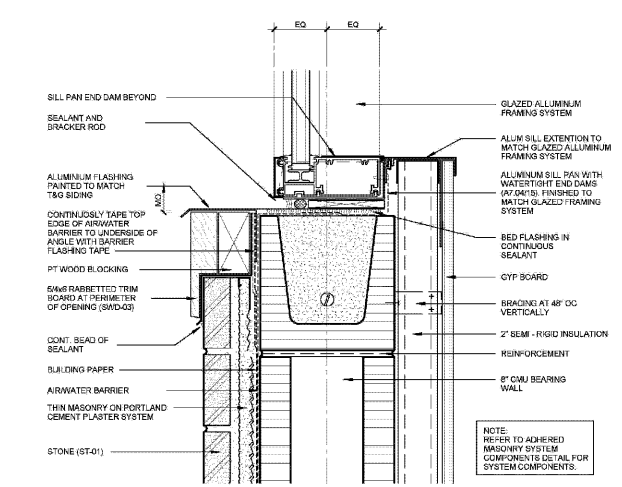
SHEET NO.  
**A7.05**



**GENERAL NOTES**

CONTROL JOINTS (CJ) AND EXPANSION JOINTS (EJ) TO BE PLACED AT:

- AS REQUIRED TO ALIGN WITH JOINTS IN SUBSTRATES.
- AS REQUIRED TO DIVIDE PLASTER INTO AREAS (PANELS) OF FOLLOWING MAXIMUM SIZES WITH LENGTH TO WIDTH RATIOS OF NOT GREATER THAN 2:1:
  - A. VERTICAL SURFACES: 144 SQ FT (12.0 X 12.0)
  - B. HORIZONTAL SURFACES: 100 SQ FT (10.0 X 10.0)
- AT DISTANCES BETWEEN CONTROL JOINTS OF NOT GREATER THAN 12 FT (3.66 M) ON CENTERS
- WHERE CONTROL JOINTS OCCUR IN SURFACE OF OTHER CONSTRUCTION DIRECTLY BEHIND PLASTER
- WHERE PLASTER AREAS CHANGE DIMENSIONS, TO DELINEATE RECTANGULAR-SHAPED WEEP PANELS AND TO RELIEVE STRESS THAT OCCURS AT CORNER FORMED BY DIMENSION CHANGE



Order Plans @

WWW.LDILine.com