

**MARRIOTT SAWGRASS
CABANA CLUB**

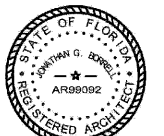
619 PONTE VEDRA BLVD
PONTE VEDRA BEACH, FL 32082

OWNER
WATERMARK CAPITAL PARTNERS, LLC
150 NORTH RIVERSIDE PLAZA, SUITE 4000
CHICAGO, IL 60605

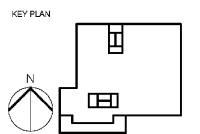
OWNER'S CONSULTANT
THE JOHN HARDY GROUP INC.
6205 SHARFIELD RD., SUITE 200
ATLANTA, GA 30328

CIVIL ENGINEER AND LANDSCAPE CONSULTANT
KIMLEY-HORN
12740 GRAN BAY PARKWAY WEST
SUITE 2050
JACKSONVILLE, FL 32258

INTERIOR DESIGN CONSULTANT
HEA DESIGN
3218 MERRICK AVENUE, SANTA MONICA,
CALIFORNIA 90404 U.S.A.



ANTHONY G. BORRELL, STATE OF FLORIDA
REGISTERED ARCHITECT LICENSE NO. AR99092
THIS PLAN HAS BEEN EXAMINED AND IS BEING SEALLED
BY ANTHONY G. BORRELL, ON 05/22/2020
ISSUED AT 12:00 PM. THE PRINTED COPIES OF THIS DOCUMENT ARE NOT
CONSIDERED VALID UNLESS THEY ARE VERIFIED ON ANY ELECTRONIC
COPIES.



REVISION NO.	DESCRIPTION	DATE

HKS PROJECT NUMBER
22808.001

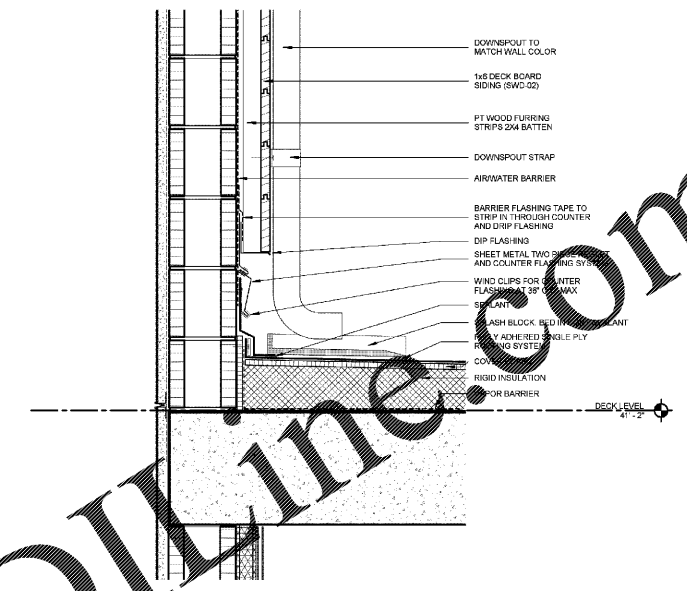
DATE
05/22/2020

ISSUE
PERMIT SET

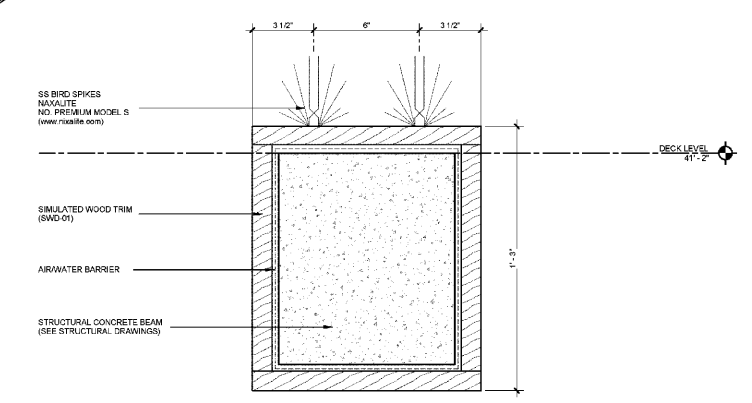
SHEET TITLE
DETAILS

SHEET NO.
A7.02A

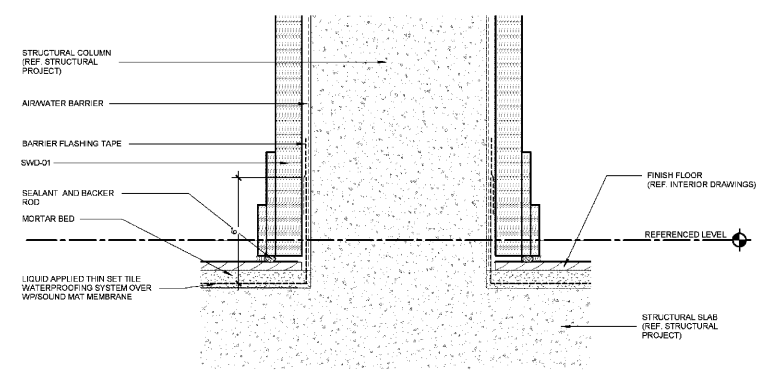
© 2020 HKS ARCHITECTS, INC.



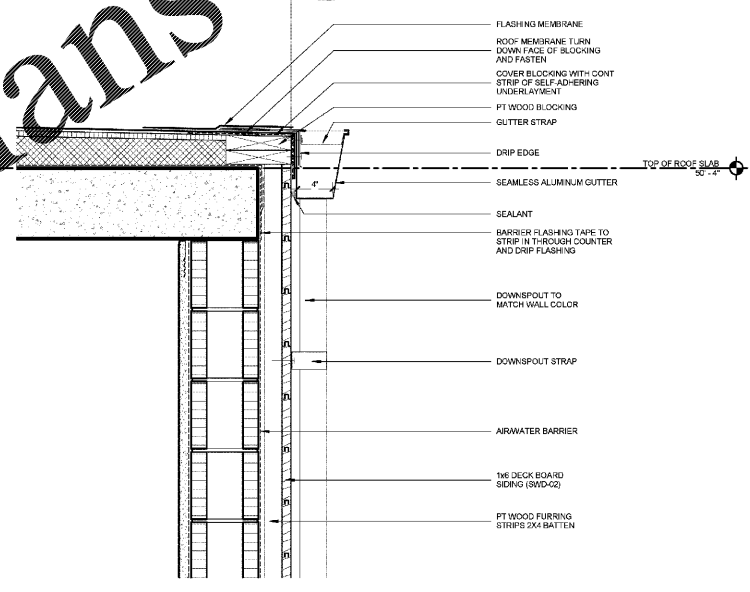
03 ROOF AND DOWNSPOT DETAIL
1 1/2" = 1'-0"



**02 SECTION DETAIL
TERRACE BEAM**
3\"/>



01 BASE OF COLUMN DETAIL
3\"/>



04 GUTTER DETAIL AT PARAPET
1 1/2" = 1'-0"

Order Plans @ www.LDOnline.com