

**MARRIOTT SAWGRASS
CABANA CLUB**

619 PONTE VEDRA BLVD
PONTE VEDRA BEACH, FL 32082

OWNER
WATERMARK CAPITAL PARTNERS, LLC
150 NORTH RIVERSIDE PLAZA SUITE 4000
CHICAGO, IL 60605

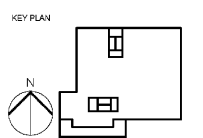
OWNER'S CONSULTANT
THE JOHN HARTY GROUP INC.
6205 SHERFIELD RD., SUITE 200
ATLANTA, GA 30328

CIVIL ENGINEER AND
LANDSCAPE CONSULTANT
KIMLEY-HORN
12740 GRAN BAY PARKWAY WEST
SUITE 2050
JACKSONVILLE, FL 32256

INTERIOR DESIGN CONSULTANT
HEA DESIGN
3218 VERNASKA AVENUE, SANTA MONICA,
CALIFORNIA 90404 U.S.A.



ANTHONY G. BORRELL, STATE OF FLORIDA
REGISTERED ARCHITECT LICENSE NO. AR99092
THIS PLAN HAS BEEN CHECKED BY ALL SIGNERS AND SEALED BY ANTHONY G. BORRELL, ON 05/22/2020.
PRINTED COPIES OF THIS DOCUMENT ARE NOT
CONSIDERED VALID UNLESS SIGNED BY THE
SIGNATURE MUST BE VERIFIED ON ANY ELECTRONIC
COPIES.



NO.	DESCRIPTION	DATE

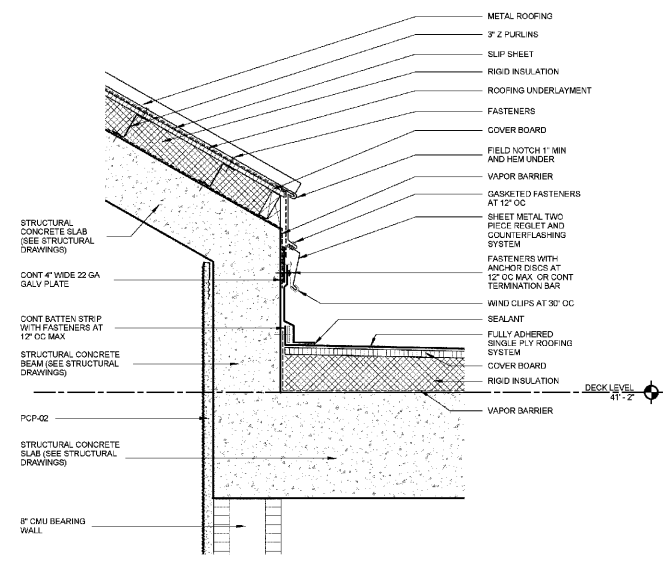
HKS PROJECT NUMBER
22808.001

DATE
05/22/2020

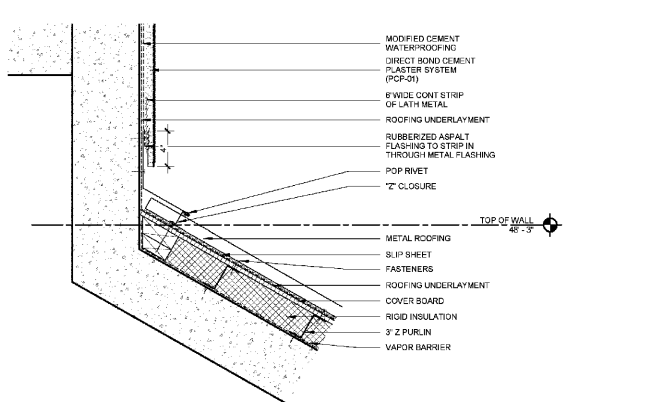
ISSUE
PERMIT SET

SHEET TITLE
DETAILS

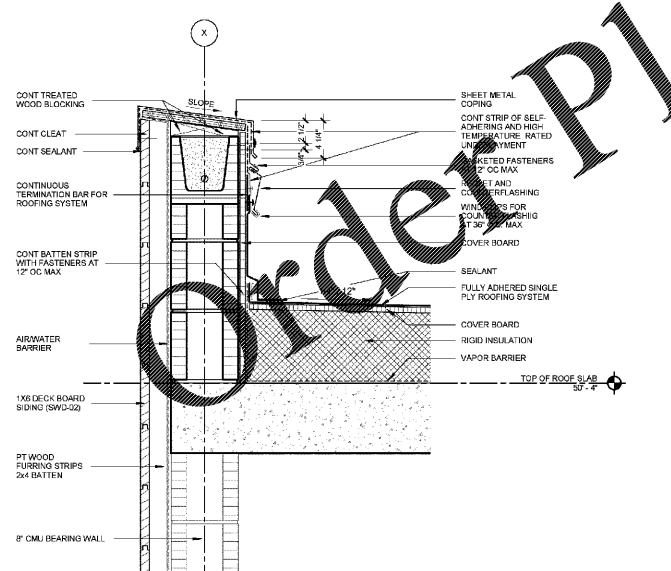
SHEET NO.
A7.02



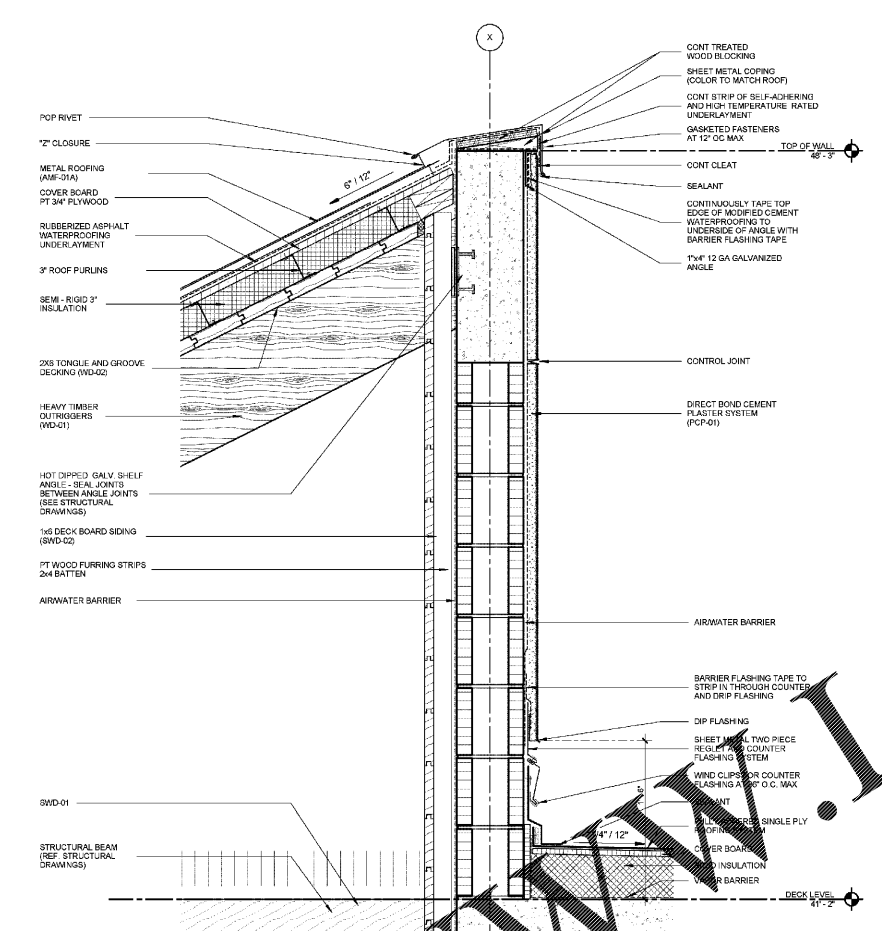
09 METAL ROOF ON STAIR
1 1/2" = 1'-0"



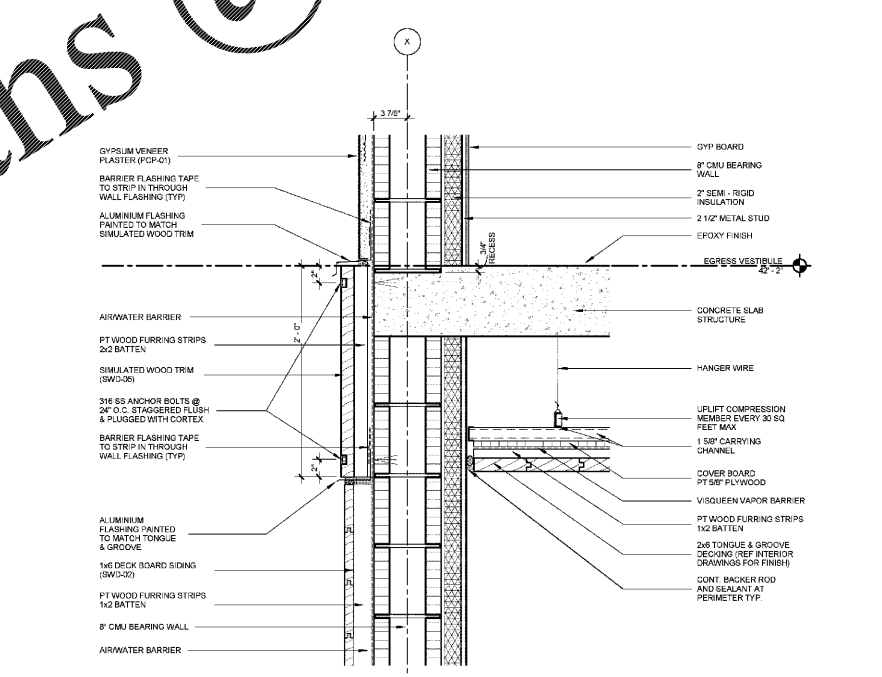
08 METAL PLASTER JOIN
1 1/2" = 1'-0"



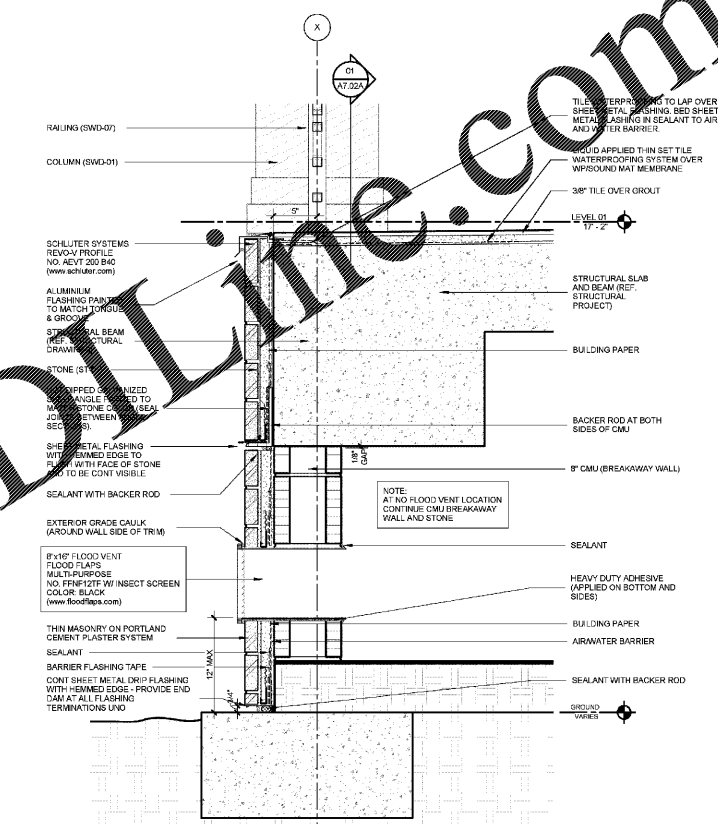
07 PARAPET SECTION
1 1/2" = 1'-0"



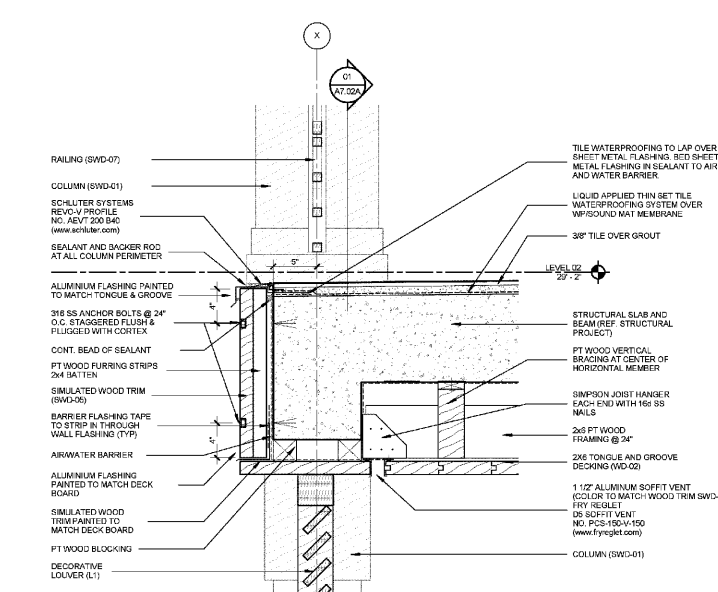
06 ROOF AND TOPPING
1 1/2" = 1'-0"



05 WOOD TRIM COVER SLAB AND WINDOW
1 1/2" = 1'-0"



03 STONE COVER ON TERRACE WITH FLOOD VENT AT BREAKWAY WALL
1 1/2" = 1'-0"



02 WOOD TRIM COVER ON TERRACE
1 1/2" = 1'-0"

Order Plans @

WWW.LDOnline.com