

ARCHITECT
HKS ARCHITECTS, INC.
AAA F000119
2030 SAULEWOOD ST, 4TH FLOOR
CORAL GABLES, FL 33134

STRUCTURAL CONSULTANT
THE RYAN TOMASETTI
101 NE THIRD AVE, SUITE 1170
FORT LAUDERDALE, FL 33301-1199

MEP CONSULTANT
THOMPSON E-FILE
53 TECHNOLOGY PKWY S, PEACHTREE CORNERS,
GA 30082

KITCHEN CONSULTANT
INNOVATIVE FOOD SERVICE
11101 NORTH 46TH STREET, TAMPA, FL 33617

WATERPROOFING CONSULTANT
CDC USA
8070 Park Ln., Suite 400 Dallas, TX 75221

CODE & LIFE SAFETY CONSULTANT
HOWE ENGINEERS
101 LONGWATER CIR, NORWELL, MA 02061

MARRIOTT SAWGRASS CABANA CLUB

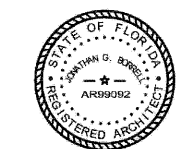
615 PONTE VEDRA BLVD
PONTE VEDRA BEACH, FL 32082

OWNER
WATERMARK CAPITAL PARTNERS, LLC
100 NORTH RIVERSIDE PLAZA, SUITE 4000
CHICAGO, IL 60606

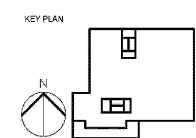
OWNER'S CONSULTANT
THE JOHN HARDY GROUP INC.
6085 SHARFIELD RD., SUITE 200
ATLANTA, GA 30328

CIVIL ENGINEER AND LANDSCAPE CONSULTANT
KIMLEY-HORN
12740 GRAN BAY PARKWAY WEST
SUITE 2000
JACKSONVILLE, FL 32256

INTERIOR DESIGN CONSULTANT
HBA DESIGN
3016 MERRILL AVENUE, SANTA MONICA,
CALIFORNIA 90404 U.S.A.



JOHN HANIG, GORRELL, STATE OF FLORIDA,
REGISTERED PROFESSIONAL ENGINEER, NO. AR99092.
THIS PLAN HAS BEEN EXAMINED AND APPROVED BY
JOHN HANIG, GORRELL, STATE OF FLORIDA,
REGISTERED PROFESSIONAL ENGINEER, NO. AR99092.
PRINTED COPIES OF THIS DOCUMENT ARE NOT
VALID UNLESS SIGNED AND SEALED BY THE
SIGNATURES AND NOT WITHIN THE VALIDITY OF ANY ELECTRONIC
COPIES.



REVISION NO.	DESCRIPTION	DATE

HKS PROJECT NUMBER
22808.001

DATE:
05/22/2020

ISSUE:
PERMIT SET

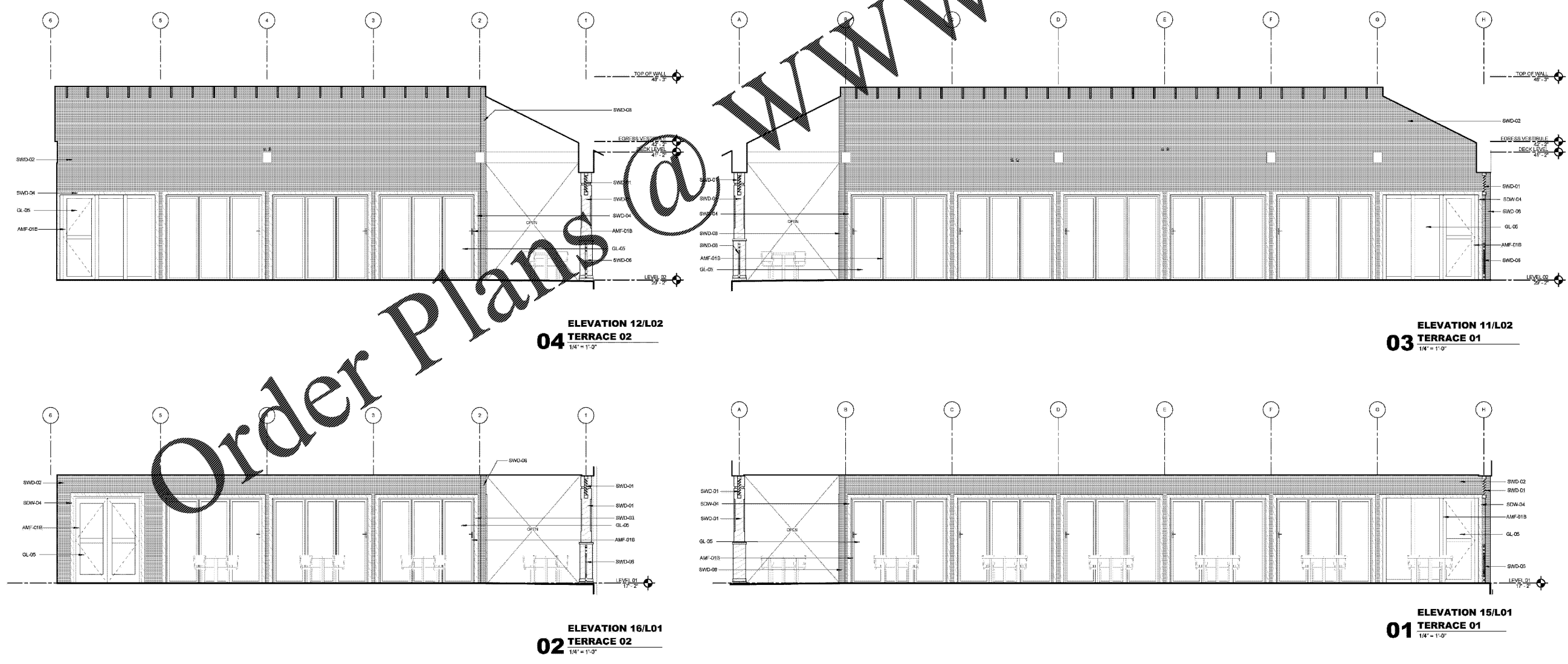
SHEET TITLE
INTERIOR ELEVATIONS TERRACES

SHEET NO.
A5.05

MATERIAL SELECTION

REFER TO DESIGN SELECTIONS SCHEDULE (A3.30) FOR FURTHER INFORMATION.

AMF-01A STAINLESS SEAM ROOF	SWD-01 WOOD CLADDING
AMF-01B ALUMINUM	SWD-02 1/2" DECK BOARD SIDING
AMF-05 PURCHED IRON WROUCH ORNAMENTATION	SWD-03 5/8" RABBETED TRIM BOARD
GL-05 CLEAR GLASS	SWD-04 5/4" RABBETED TRIM BOARD
GL-06F FROSTED GLASS	SWD-06 1 1/2" SIMULATED WOOD TRIM
CHR-01 CABLE RAILING STAINLESS STEEL	SWD-08 1 1/2" SIMULATED WOOD TRIM
PCR-01 SANTA BARBARA FINISH PLASTER	SWD-07 SIMULATED WOOD RAILING
PCR-02 SANTA BARBARA FINISH PLASTER	SWD-08 RABBETED TRIM BOARD
RCC-01 CUSTOM CANTILEVERED CANOPY	SWD-09 1/2" SIMULATED WOOD TRIM
ST-01 STONE PROFILE	SWD-10 1/2" SIMULATED WOOD TRIM
ST-02 STONE WALL CAP	SWD-11 1/2" SIMULATED WOOD TRIM



Order Plans @ WWW.LDILine.com