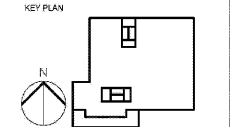


JOHN ANTHONY G. BURRELL, STATE OF FLORIDA, REGISTERED PROFESSIONAL ENGINEER, LICENSE NO. AR93902. THESE PLANS HAVE BEEN EXAMINED AND APPROVED BY THE ENGINEER. ANY CHANGES TO THESE PLANS MUST BE APPROVED BY THE ENGINEER. PRINTED COPIES OF THIS DOCUMENT ARE NOT VALID FOR CONSTRUCTION. ORIGINAL COPIES MUST BE KEPT ON HAND AT ALL TIMES.



| REVISION NO. | DESCRIPTION | DATE |
|--------------|-------------|------|
| | | |
| | | |
| | | |
| | | |
| | | |
| | | |
| | | |
| | | |
| | | |
| | | |

HKS PROJECT NUMBER
22808.001

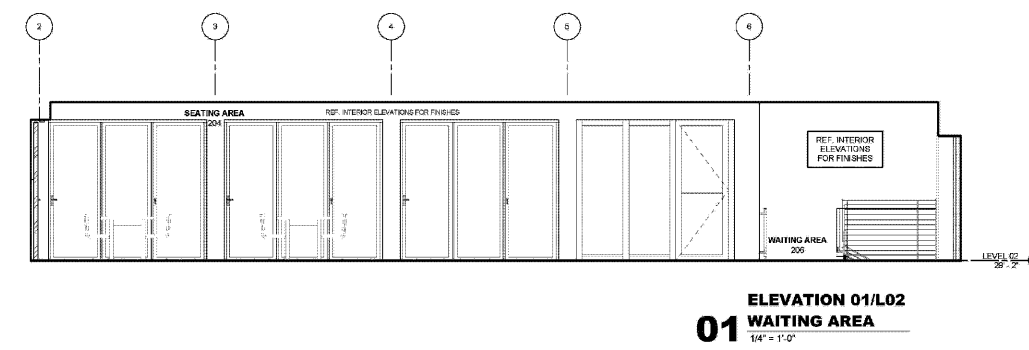
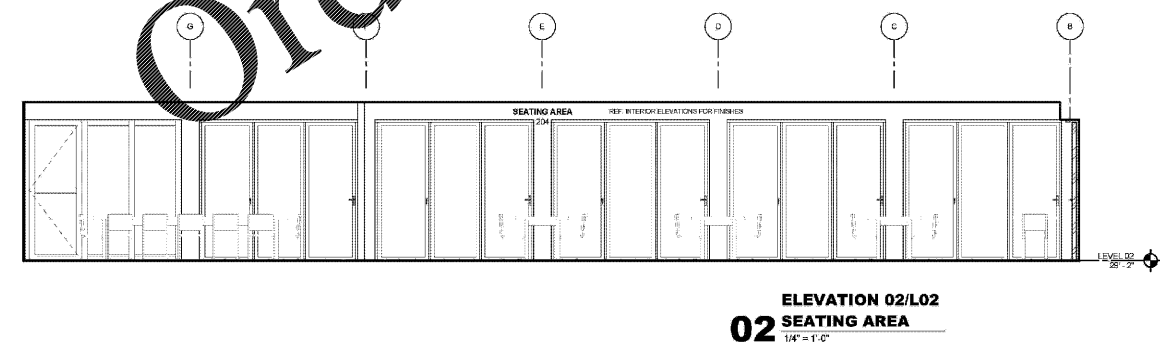
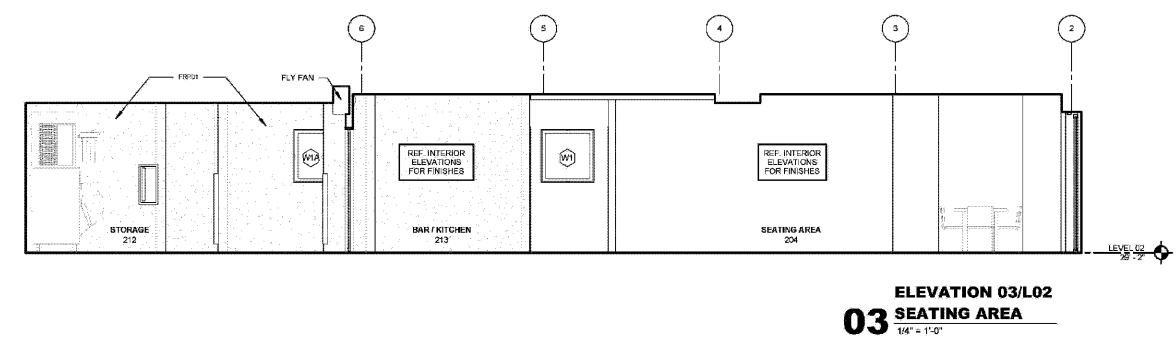
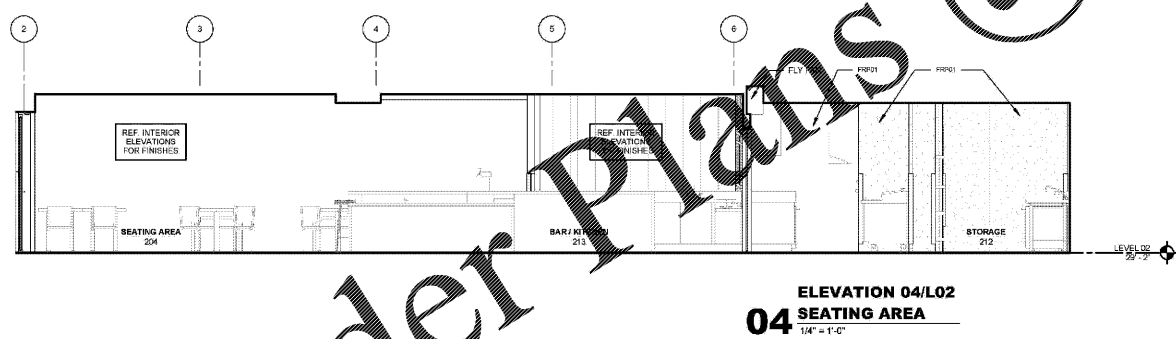
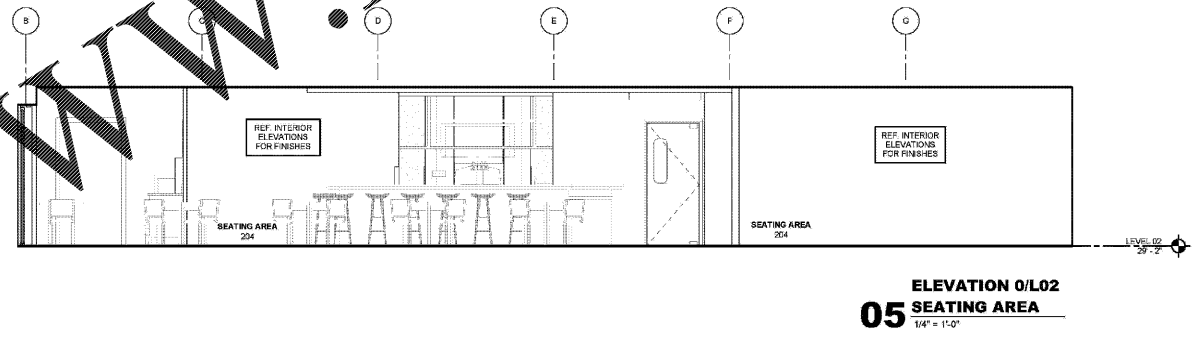
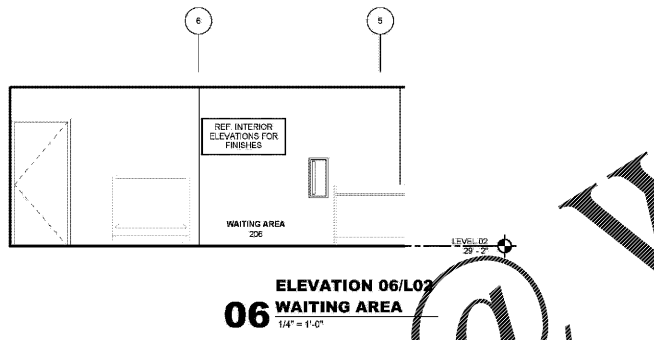
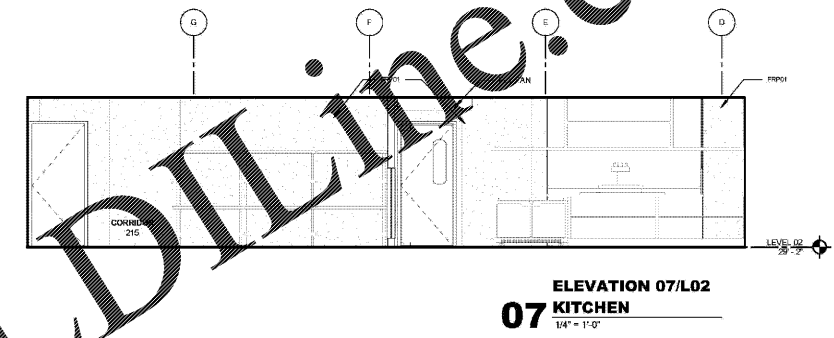
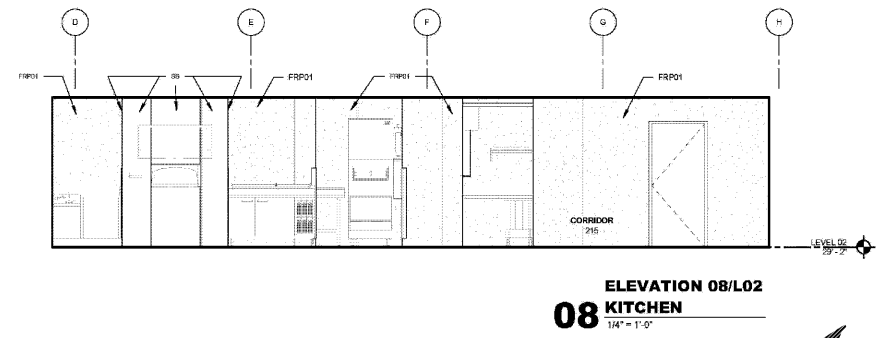
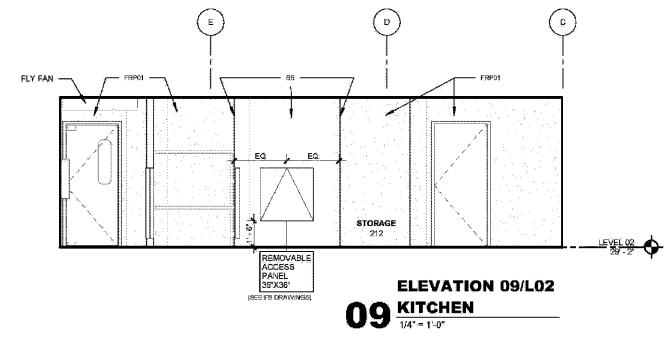
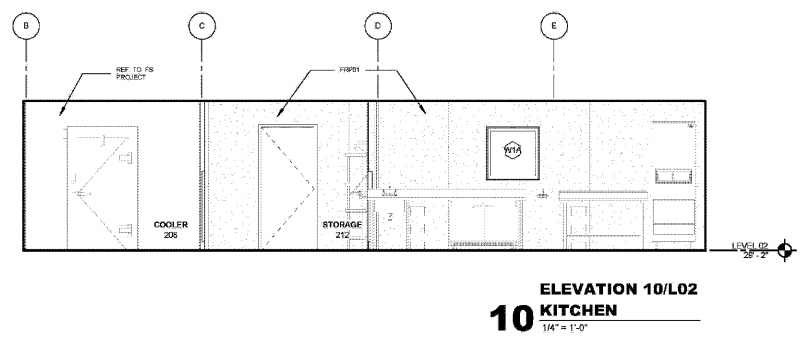
DATE
05/22/2020

ISSUE
PERMIT SET

SHEET TITLE
INTERIOR ELEVATIONS LEVEL 02

SHEET NO.
A5.04

| INTERIOR FINISHES BOH | GENERAL NOTES |
|-----------------------------------------------------|----------------------------------------------------------|
| FRP01 NUDD FIBERLITE (SMOOTH WHITE (10) CLASS A) | 1. REFER TO FOOD SERVICE DRAWINGS FOR KITCHEN EQUIPMENT. |
| SS STAINLESS STEEL | |



Order Plans @

WWW.LDLINE.COM