

ARCHITECT
HKS ARCHITECTS, INC.
AAA F000119
2030 SAUL ZIESS ST., 4TH FLOOR
CORAL GABLES, FL 33134

STRUCTURAL CONSULTANT
THE RYAN T. CASSETTI
101 NE THIRD AVE., SUITE 1170
FORT LAUDERDALE, FL 33301-1199

MEP CONSULTANT
THOMPSON E+L
53 TECHNOLOGY PKWY S. PEACHTREE CORNERS,
GA 30082

KITCHEN CONSULTANT
INDUSTRIVE FOOD SERVICE
11101 NORTH 40TH STREET, TAMPA, FL 33617

WATERPROOFING CONSULTANT
CDC USA
8070 Park Ln., Suite 400 Dallas, TX 75231

CODE & LIFE SAFETY CONSULTANT
HOWE ENGINEERS
101 LONGWATER CIR. NORWELL, MA 02061

MARRIOTT SAWGRASS CABANA CLUB

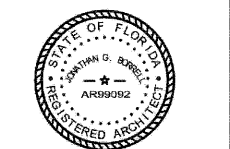
619 PONTE VEDRA BLVD
PONTE VEDRA BEACH, FL 32082

OWNER
WATERMARK CAPITAL PARTNERS, LLC
100 NORTH RIVERSIDE PLAZA SUITE 4000
CHICAGO, IL 60606

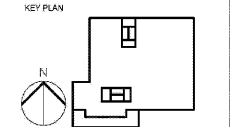
OWNER'S CONSULTANT
THE JOHN HARGY GROUP INC.
6085 SHELLEY RD., SUITE 200
ATLANTA, GA 30328

CIVIL ENGINEER AND LANDSCAPE CONSULTANT
KIMLEY-HORN
12740 GRAY PARKWAY WEST
SUITE 2000
JACKSONVILLE, FL 32256

INTERIOR DESIGN CONSULTANT
HBA DESIGN
3016 MERRILLA AVENUE, SANTA MONICA,
CALIFORNIA 90404 U.S.A.



JOHNATHAN G. BURRELL, STATE OF FLORIDA,
REGISTERED PROFESSIONAL ENGINEER, LICENSE NO. AR939082.
THIS PLAN HAS BEEN EXAMINED AND APPROVED BY
SAUL G. BURRELL, STATE OF FLORIDA,
REGISTERED PROFESSIONAL ARCHITECT, LICENSE NO. AR00000000.
PRINTED COPIES OF THIS DOCUMENT ARE NOT
VALID UNLESS SIGNED AND SEALED BY THE
SIGNATURE HAS BEEN VERIFIED BY ELECTRONIC
COPIES.



REVISION NO.	DESCRIPTION	DATE

HKS PROJECT NUMBER
22808.001

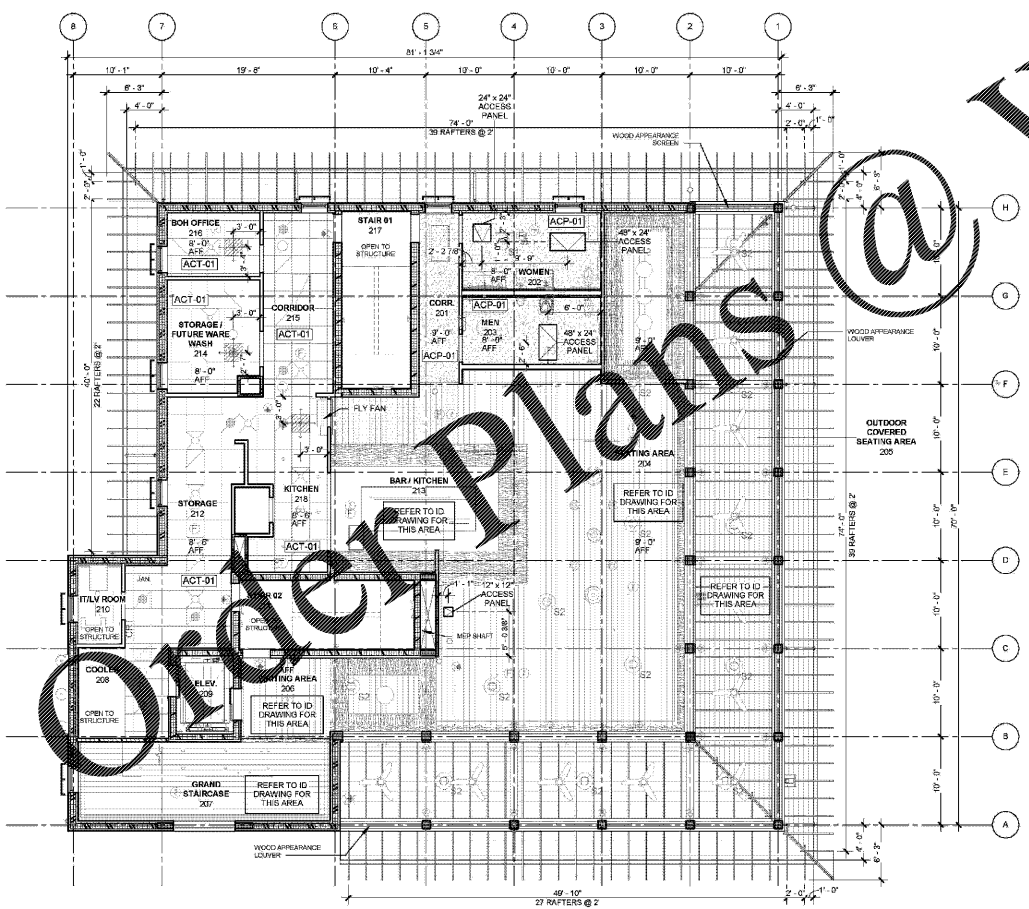
DATE
05/22/2020

ISSUE
PERMIT SET

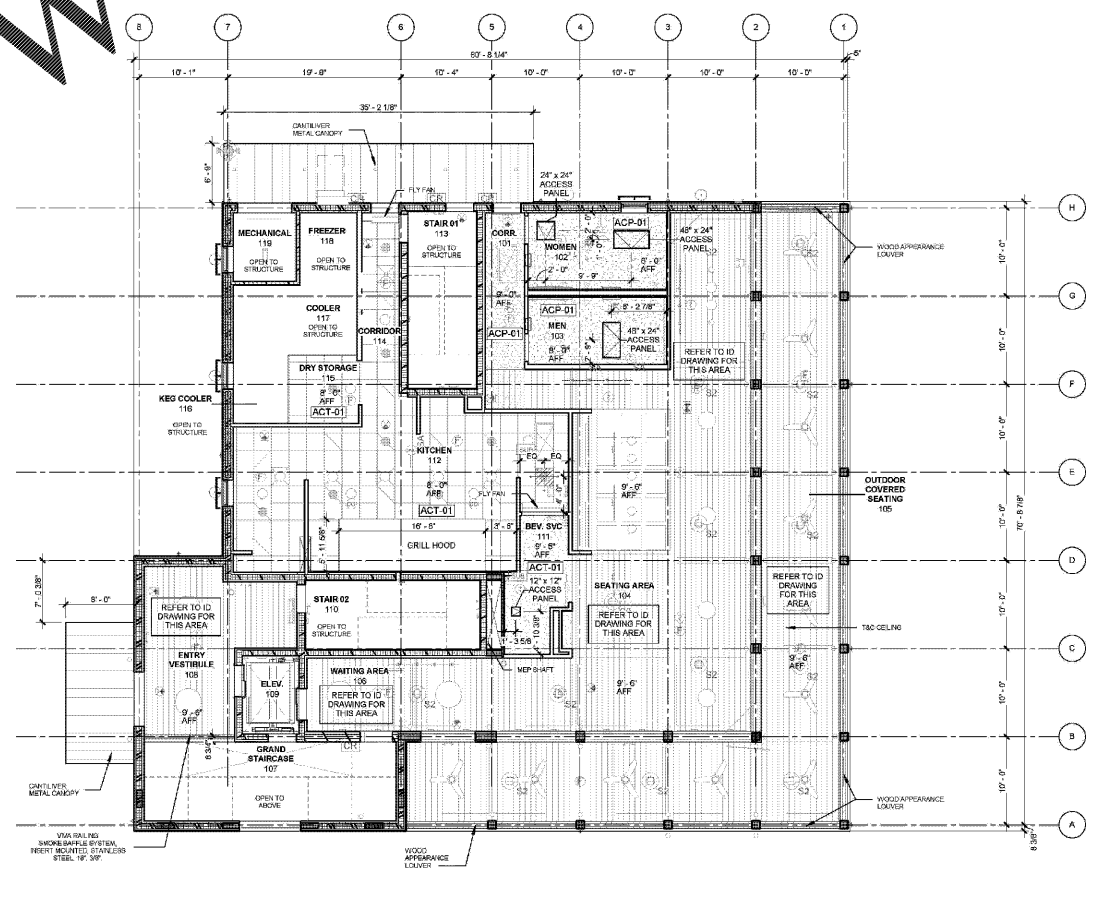
SHEET TITLE
RCP - LEVEL 01 & 02

SHEET NO.
A4.01

GENERAL NOTES - REFLECTED CEILING PLAN	CEILING SYMBOL LEGEND	INTERIOR FINISHES BOH
<p>1. ALL CEILINGS SHALL BE AS INDICATED ON THE RCP PLAN, UNLESS NOTED OTHERWISE. (COORDINATE WITH OWNER-FURNISHED VENDOR DRAWINGS AND EQUIPMENT.)</p> <p>2. IN THE CASE OF MINOR DISCREPANCIES BETWEEN MEP AND ARCHITECTURAL DOCUMENTS IN THE LOCATION OF CEILING MOUNTED COMPONENTS, THE ARCHITECTURAL REFLECTED CEILING PLAN SHALL GOVERN. IN THE CASE OF MAJOR DISCREPANCIES, THE ARCHITECT SHALL BE NOTIFIED AS SOON AS THE DISCREPANCY IS DISCOVERED PRIOR TO PROCEEDING WITH THE WORK.</p> <p>3. REFERENCE MECHANICAL AND ELECTRICAL DRAWINGS FOR MOUNTING LOCATIONS OF ITEMS WHERE NO CEILING IS REQUIRED OR INDICATED. LIGHTS, DIFFUSERS, EXIT SIGNS, SMOKE DETECTORS, SPEAKERS, STROBES AND MISCELLANEOUS DEVICES SHALL BE CENTERED IN THE CEILING TILE IN WHICH THEY OCCUR, UNLESS NOTED OTHERWISE.</p> <p>4. ALL CORRIDOR SPRINKLER HEADS SHALL BE ALIGNED IN THE SAME LOCATION PARALLEL TO THE WALL WITH EACH SPECIFIC CEILING CONSTRUCTION. ARCHITECTURALLY SIGNIFICANT SPRINKLER HEAD LOCATIONS MAY BE SHOWN ON REFLECTED CEILING PLAN FOR DESIGN INTENT ONLY.</p> <p>5. ACCESS DOOR LOCATIONS IN GYPSUM BOARD CEILINGS ARE INDICATED ON RCP'S ONLY WHERE ARCHITECTURALLY SIGNIFICANT. REFERENCE SPECIFICATIONS AND MEP DRAWINGS FOR OTHER ACCESS DOOR LOCATIONS.</p> <p>6. EXIT SIGNS ARE SHOWN ON REFLECTED CEILING PLAN ONLY WHERE LOCATION IS ARCHITECTURALLY SIGNIFICANT.</p>	<p>GYPSUM BOARD CEILING</p> <p>SUPPLY AIR</p> <p>RETURN AIR</p> <p>EXHAUST AIR</p> <p>ACCESS PANEL</p> <p>FLUORESCENT LIGHT</p> <p>SUSPENDED LIGHT</p> <p>SUSPENDED FLUORESCENT LIGHT</p> <p>WALL MOUNTED FIXTURE</p> <p>CHANDELIER</p> <p>CONTROL JOINTS</p> <p>EXIT SIGN - HATCH INDICATES EXIT TEXT & ARROW INDICATES DIRECTION</p> <p>SMOKE DETECTOR</p> <p>FIRE ALARM / STROBE</p> <p>SPEAKER</p> <p>PROJECTOR</p> <p>WALL WASHER</p> <p>PENDANT TYPE LIGHT FIXTURE</p> <p>WALL MOUNTED LIGHT FIXTURE</p> <p>DOWNLIGHT</p> <p>STRIP LIGHT</p>	<p>ACT01 DESCRIPTION: ARMSTRONG KITCHEN ZONE (24" x 24" PANEL) 5' AND PRELUDE XL 15" (6" SUSPENSION SYSTEM) FINISH: MATE, WHITE</p> <p>ACT01 DESCRIPTION: 58" DRYWALL ON GALV. METAL FRAMING SYSTEM FINISH: LEVEL 5 GRADE FINISH</p>



02 RCP - LEVEL 02
1/8" = 1'-0"



01 RCP - LEVEL 01
1/8" = 1'-0"

WWW.LDILine.com

Order Plans @