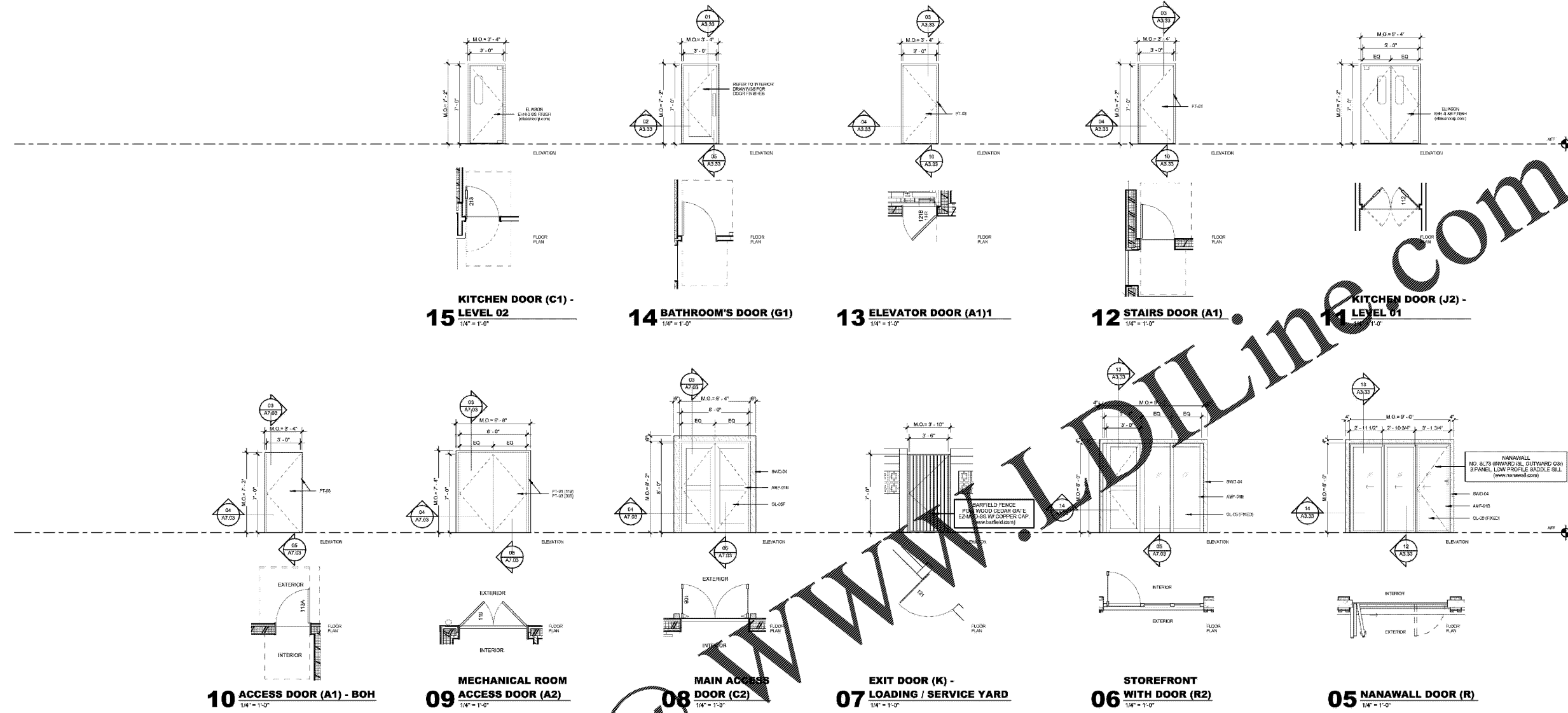
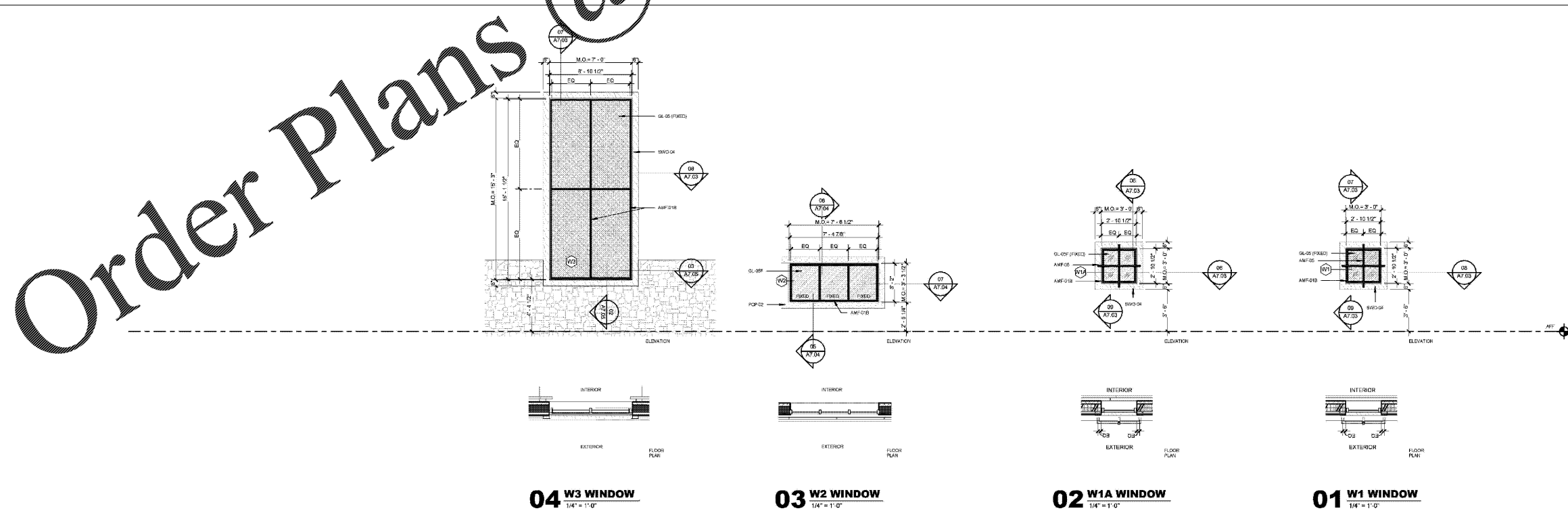


**DOOR TYPES**



**WINDOW TYPES**



**HKS**

ARCHITECT  
HKS ARCHITECTS, INC.  
AAA F002119  
2030 SALZEDO ST, 4TH FLOOR  
CORAL GABLES, FL 33134

STRUCTURAL CONSULTANT  
THE RYAN TOMASETTI  
101 NE THIRD AVE, SUITE 1170  
FORT LAUDERDALE, FL 33301-1199

MEP CONSULTANT  
THOMPSON E+H  
50 TECHNOLOGY PKWY S, PEACHTREE CORNERS,  
GA 30082

KITCHEN CONSULTANT  
INNOVATIVE FOOD SERVICE  
11101 NORTH 40TH STREET, TAMPA, FL 33617

WATERPROOFING CONSULTANT  
CDC USA  
8070 Park Ln., Suite 400 Dallas, TX 75231

CODE & LIFE SAFETY CONSULTANT  
HOWE ENGINEERS  
101 LONGWATER CIR. NORWELL, MA 02061

**MARRIOTT SAWGRASS  
CABANA CLUB**

819 PONTE VEDRA BLVD  
PONTE VEDRA BEACH, FL 32082

OWNER  
WATERMARK CAPITAL PARTNERS, LLC  
100 NORTH RIVERSIDE PLAZA, SUITE 4000  
CHICAGO, IL 60606

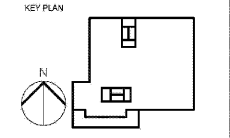
OWNER'S CONSULTANT  
THE JOHN HANCOY GROUP INC.  
6085 SHARFIELD RD., SUITE 200  
ATLANTA, GA 30328

CIVIL ENGINEER AND LANDSCAPE CONSULTANT  
KIMLEY-HORN  
12740 GRAN BAY PARKWAY WEST  
SUITE 2000  
JACKSONVILLE, FL 32256

INTERIOR DESIGN CONSULTANT  
H&A DESIGN  
3016 MERRILLA AVENUE, SANTA MONICA,  
CALIFORNIA 90404 U. S. A.



JOHN H. G. SORRELL, STATE OF FLORIDA,  
REGISTERED PROFESSIONAL ENGINEER, NO. AR99092.  
THIS FORM HAS BEEN OFFICIALLY REPRODUCED AND PRINTED BY  
STATE OF FLORIDA, ENGINEERING BOARD.  
PRINTED COPIES OF THIS DOCUMENT ARE NOT  
VALID UNLESS THEY ARE REPRODUCED AND PRINTED BY THE  
STATE OF FLORIDA, ENGINEERING BOARD.



REVISION NO.	DESCRIPTION	DATE

HKS PROJECT NUMBER  
**22808.001**

DATE  
**05/22/2020**

ISSUE  
**PERMIT SET**

SHEET TITLE  
**WINDOWS AND DOORS ELEVATIONS**

SHEET NO.  
**A3.34**

PLOT DATE: 05/22/2020 1:52:23 PM  
TEMPLATE VERSION: 3.0.0 (201702)