

MARRIOTT SAWGRASS
CABANA CLUB

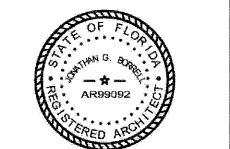
610 PONTE VEDRA BLVD
PONTE VEDRA BEACH, FL 32082

OWNER
WATERMARK CAPITAL PARTNERS, LLC
100 NORTH RIVERVIEW PLAZA SUITE 4000
CHICAGO, IL 60605

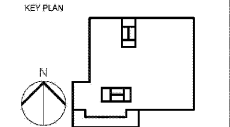
OWNER'S CONSULTANT
THE JOHN HARDY GROUP INC.
6085 SHARPLEY RD., SUITE 200
ATLANTA, GA 30328

CIVIL ENGINEER AND
LANDSCAPE CONSULTANT
KIMLEY-HORN
12740 GRAN BAY PARKWAY WEST
SUITE 2280
JACKSONVILLE, FL 32256

INTERIOR DESIGN
CONSULTANT
HBA DESIGN
3016 MERRILL AVENUE, SANTA MONICA,
CALIFORNIA 90404 U.S.A.



JOHN H. GORNELL, STATE OF FLORIDA,
REGISTERED PROFESSIONAL ENGINEER, LICENSE NO. AR99092.
THIS PLAN HAS BEEN ELECTRONICALLY SIGNED AND SEALED
BY JOHN H. GORNELL, STATE OF FLORIDA,
REGISTERED PROFESSIONAL ENGINEER, LICENSE NO. AR99092.
PRINTED COPIES OF THIS DOCUMENT ARE NOT
CONSIDERED VALID AND REALIZED UNLESS THE
SIGNATURE HAS BEEN VERIFIED BY ELECTRONIC
COPIES.

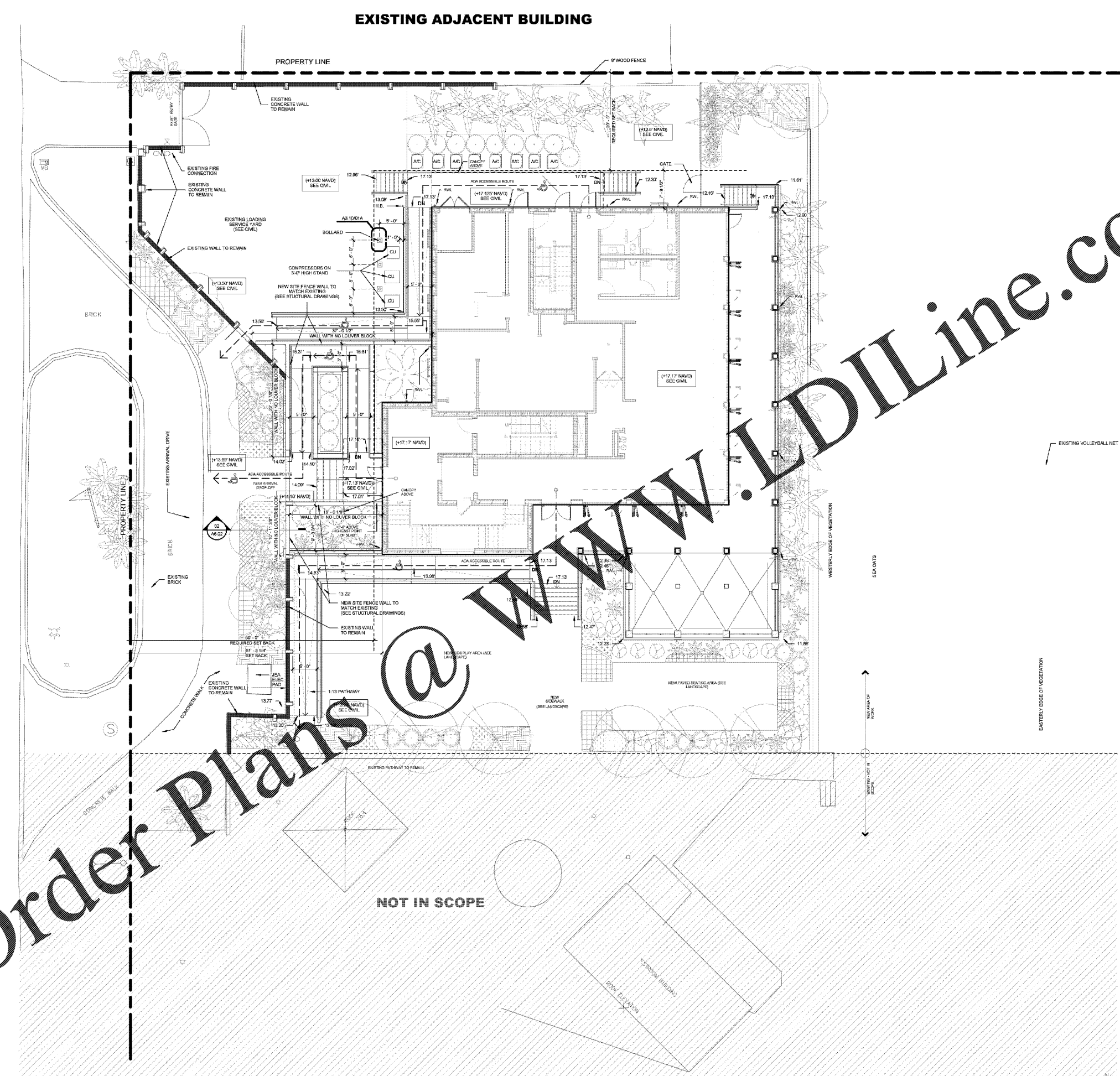


REVISION NO.	DESCRIPTION	DATE

HKS PROJECT NUMBER
22808.001
DATE:
05/22/2020
ISSUE:
PERMIT SET

SHEET TITLE
SITE PLAN

SHEET NO.
A1.01



Order Plans @ www.LDILine.com

NOT IN SCOPE