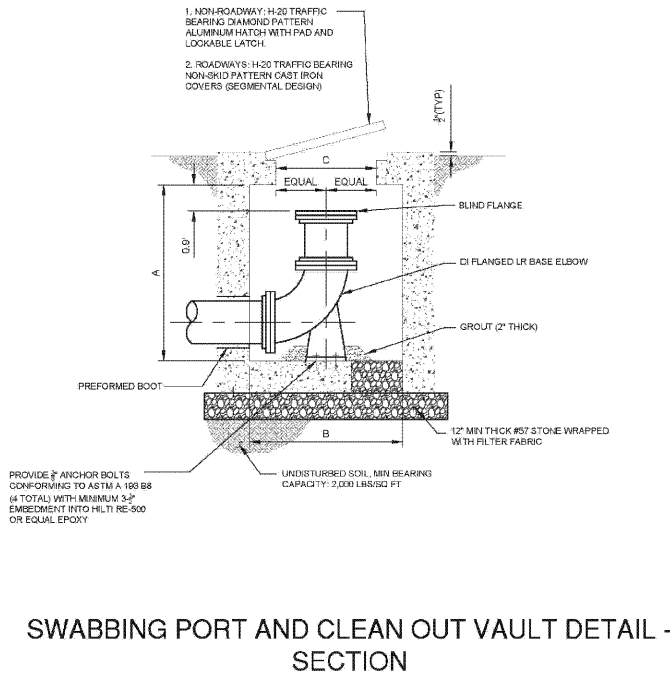
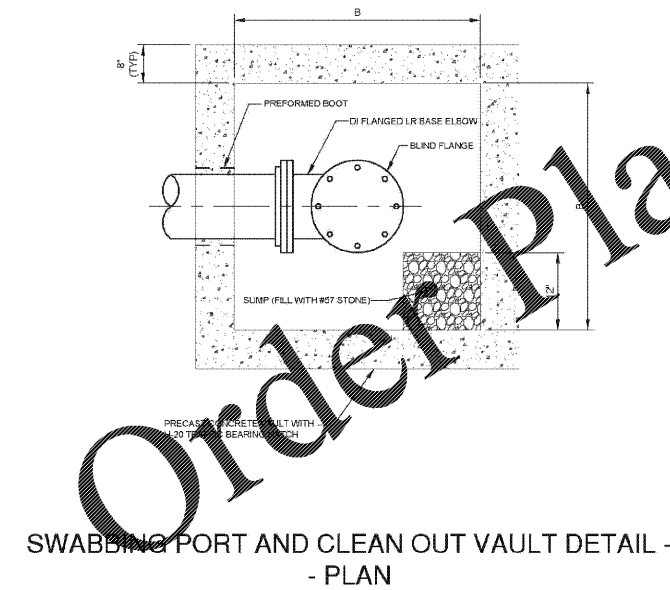


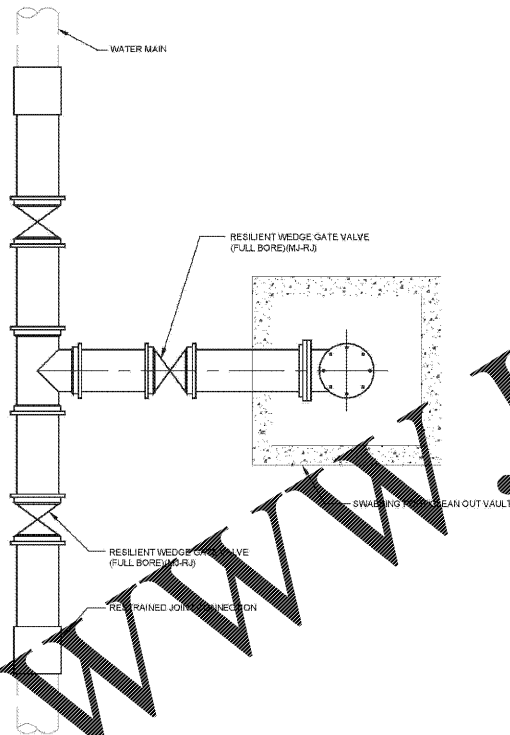
C:\JEA_Cad\435559603 - Water\04 - Detail\04 - JEA STANDARD WATER MAIN DETAILS.dwg
Current Layout Tab: 06
Wed Apr 16, 2020 - 08:30



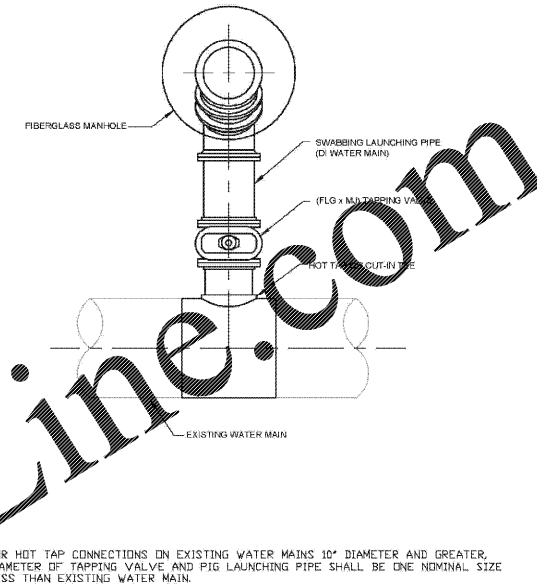
SWABBING PORT AND CLEAN OUT VAULT DETAIL - SECTION
JANUARY 2020 PLATE W-45



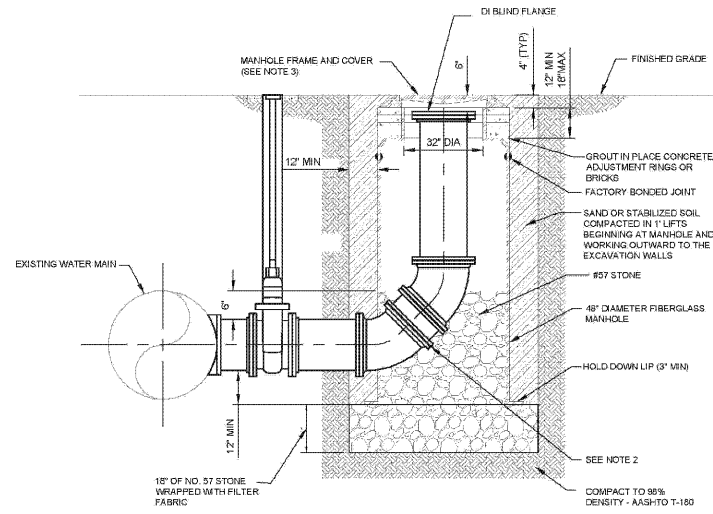
SWABBING PORT AND CLEAN OUT VAULT DETAIL - PLAN
JANUARY 2020 PLATE W-45A



SWABBING LAUNCHING STATION DETAIL FOR NEW WATER MAIN UP TO 24"
JANUARY 2020 PLATE W-45B



SWABBING PIG LAUNCHING STATION DETAIL FOR WATER MAINS UP TO 24" - PLAN
JANUARY 2020 PLATE W-45C



RETROFIT SWABBING LAUNCHING STATION DETAIL FOR WATER MAINS UP TO 24" - SECTION
JANUARY 2020 PLATE W-45D

- NOTES:
1. PROVIDE ALL MATERIALS IN ACCORDANCE TO JEA WATER AND WASTEWATER STANDARD SPECIFICATIONS.
 2. USE TWO VERTICAL 45 DEGREE MJ BENDS OR LONG RADIUS 90 DEGREE MJ BEND.
 3. PROVIDE STANDARD JEA FRAME AND COVER.
 4. RESTRAIN ALL JOINTS.

NO.	REVISIONS	BY	DATE	NO.	DATE	BY	DATE	DESIGN ENGINEER	FLORIDA REGISTRATION NO.
2				2					
3				3					
4				4					
5				5					
6				6					

DESIGNER	
DRAWN BY	
CHECKED BY	
DATE	

PROJ. NO.	
DATE	JANUARY 2020
SHEET NO.	AS NOTED
DRAWING NO.	S-STD-1



JEA STANDARD
WATER AND RECLAIM DETAILS