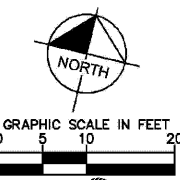
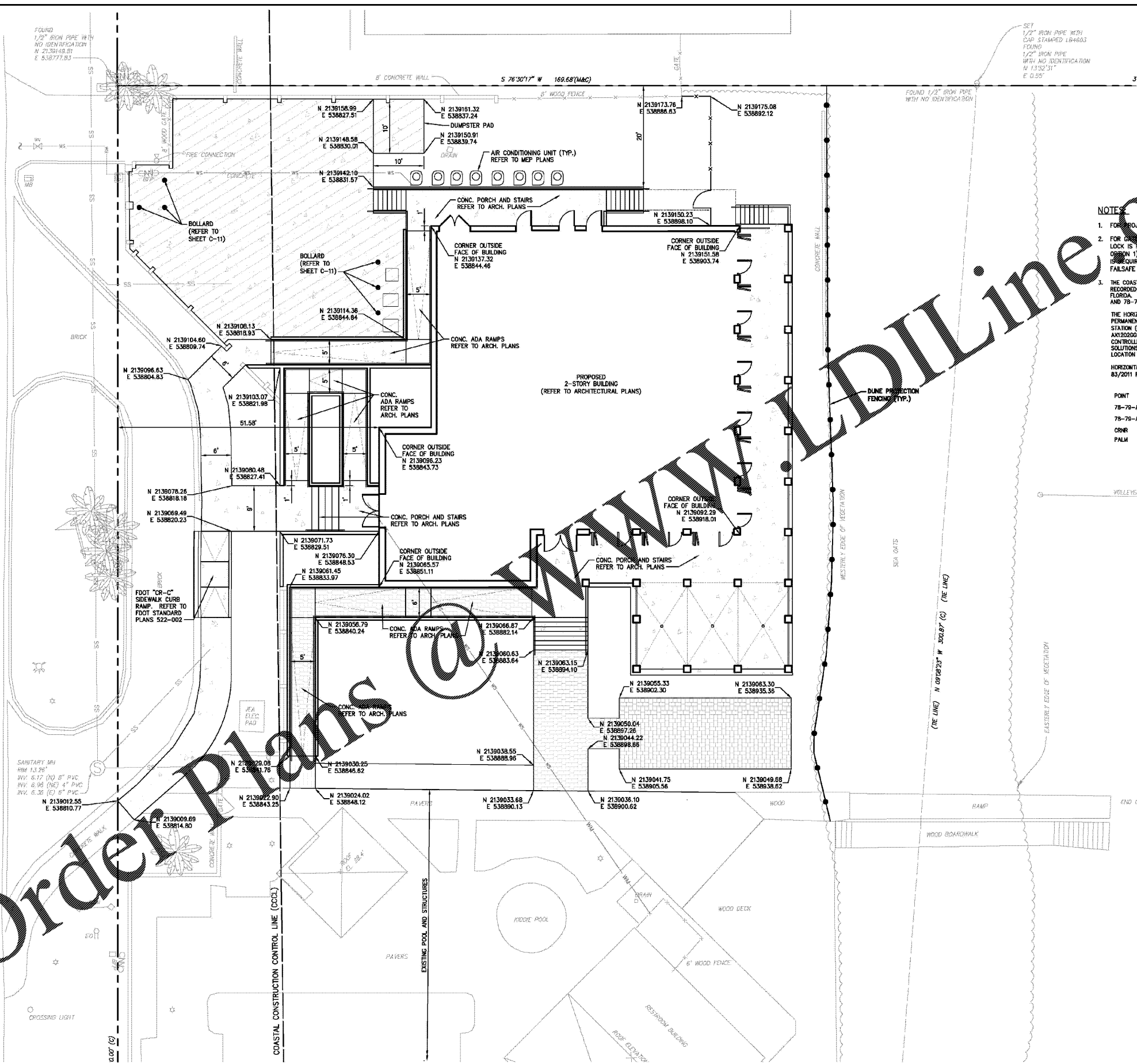


© 2020 KIMLEY-HORN AND ASSOCIATES, INC. ALL RIGHTS RESERVED. THIS DRAWING IS THE PROPERTY OF KIMLEY-HORN AND ASSOCIATES, INC. AND IS NOT TO BE REPRODUCED OR TRANSMITTED IN ANY FORM OR BY ANY MEANS, ELECTRONIC OR MECHANICAL, INCLUDING PHOTOCOPYING, RECORDING, OR BY ANY INFORMATION STORAGE AND RETRIEVAL SYSTEM. ANY UNAUTHORIZED REPRODUCTION OR TRANSMISSION OF THIS DRAWING IS STRICTLY PROHIBITED. THE USER OF THIS DRAWING AGREES TO HOLD KIMLEY-HORN AND ASSOCIATES, INC. HARMLESS FROM ANY AND ALL CLAIMS, DAMAGES, LOSSES AND EXPENSES, INCLUDING REASONABLE ATTORNEY'S FEES, THAT MAY BE ASSERTED AGAINST KIMLEY-HORN AND ASSOCIATES, INC. OR ITS CONSULTANTS, ENGINEERS OR ARCHITECTS IN CONNECTION WITH THE PERFORMANCE OF SERVICES UNDER THIS AGREEMENT. THE USER OF THIS DRAWING AGREES TO INDEMNIFY AND HOLD KIMLEY-HORN AND ASSOCIATES, INC. HARMLESS FROM ANY AND ALL CLAIMS, DAMAGES, LOSSES AND EXPENSES, INCLUDING REASONABLE ATTORNEY'S FEES, THAT MAY BE ASSERTED AGAINST KIMLEY-HORN AND ASSOCIATES, INC. OR ITS CONSULTANTS, ENGINEERS OR ARCHITECTS IN CONNECTION WITH THE PERFORMANCE OF SERVICES UNDER THIS AGREEMENT.

PONTE VEDRA BOULEVARD (C.R. 203)  
(or Right-of-Way)



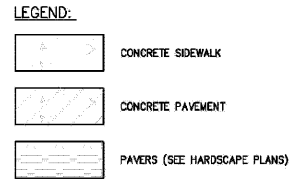
**NOTES**

- FOR PROJECT BENCHMARKS REFER TO SHEET C-06
- FOR GROUNDWATER MONITORING POINTS, IF A PADLOCK IS NEEDED, A SPECIAL LOCK IS REQUIRED. PLEASE CALL THE FIRE MARSHAL'S OFFICE (209-1740, OPTION 1) TO OBTAIN A KNOX FORM. FOR ACCESS TO BLDGS, A KEYPAD IS REQUIRED. PLEASE CALL THE FIRE MARSHAL'S OFFICE TO OBTAIN A FAILSAFE FORM. (NFPA 1.10.12)
- THE COASTAL CONSTRUCTION CONTROL LINE (CCCL) SHOWN HEREIN IS PER MAPS RECORDED JANUARY 28, 1988 IN CDCL BOOK 138, PAGES 1-15, ST. JOHNS COUNTY, FLORIDA. THE LOCATION IS BASED IN FIELD LOCATION OF MONUMENTS 78-79-A11 AND 78-79-A14.

THE HORIZONTAL POSITIONS SHOWN FOR THE COCL WERE DERIVED USING THE FLORIDA PERMANENT REFERENCE NETWORK (FPRN) CONTINUOUSLY OPERATING REFERENCE STATION (CORS) "CRNR" WITH A LEICA GTX120000 PRO REFERENCE RECEIVER WITH AX120200 ANTENNA. REAL TIME KINEMATIC (RTK) ROVER UNIT WAS TRIMBLE XXXX CONTROLLER AND RTK-4 ANTENNA AT THE PROJECT SITE. SINGLE BASELINE SOLUTIONS WERE USED FROM THE FPRN CORRS. THE POSITIONAL ACCURACY OF THIS LOCATION IS 0.10 FEET.

HORIZONTAL DATUM: STATE PLANE COORDINATES NORTH AMERICAN DATUM (NAD) 83/2011 FLORIDA EAST ZONE US SURVEY FEET.

POINT	RTK MEASURED		NGS PUBLISHED	
	NORTHING	EASTING	NORTHING	EASTING
78-79-A11	2143596.40	537896.73		
78-79-A14	2131444.27	54018.74		
CRNR	2121004.65	539502.62		
PALM	2135598.63	535911.42	2135598.72	535911.33



THE PRESENCE OF GROUNDWATER SHOULD BE ANTICIPATED ON THIS PROJECT. CONTRACTOR'S BID SHALL INCLUDE CONSIDERATION FOR ADDRESSING THIS ISSUE.

THE SITE CONSTRUCTION STAKEOUT SHALL BE PERFORMED UNDER THE DIRECTION OF A FLORIDA REGISTERED SURVEYOR. AUTOCAD FILES WILL BE FURNISHED TO AID IN THE SITE CONSTRUCTION STAKEOUT. ANY DISCREPANCIES FOUND BETWEEN AUTOCAD FILES AND SITE CONSTRUCTION PLANS SHALL BE BROUGHT TO THE ENGINEER'S ATTENTION FOR CLARIFICATION PRIOR TO THAT STAKEOUT.

**PROJECT DATUM: NAVD'88**

Always call 811 two full business days before you dig to have underground utilities located and marked.



 KIMLEY-HORN AND ASSOCIATES, INC. 2620 KIMLEY-HORN AND ASSOCIATES, INC. 12740 BRIAN BAY PARKWAY WEST, SUITE 2350 JACKSONVILLE, FLORIDA 32258 PHONE: 904-828-3900 WWW.KIMLEY-HORN.COM    REGISTRY #99	 JOSEPH P. MECCA, P.E. No. 53192 STATE OF FLORIDA PROFESSIONAL ENGINEER	LICENSED PROFESSIONAL JOSEPH P. MECCA, P.E. FLORIDA LICENSE NUMBER DATE: 5/31/2020 SCALE: AS SHOWN DESIGNED BY: WAJ DRAWN BY: CDC CHECKED BY: JPM	PAVING AND GEOMETRY PLAN MARIOTT SAWGRASS CABANA BEACH CLUB PREPARED FOR: CWI SAWGRASS HOTEL, LLC	ST. JOHNS COUNTY FLORIDA
			SHEET NUMBER <b>C-08</b>	REVISIONS No.    DATE    BY