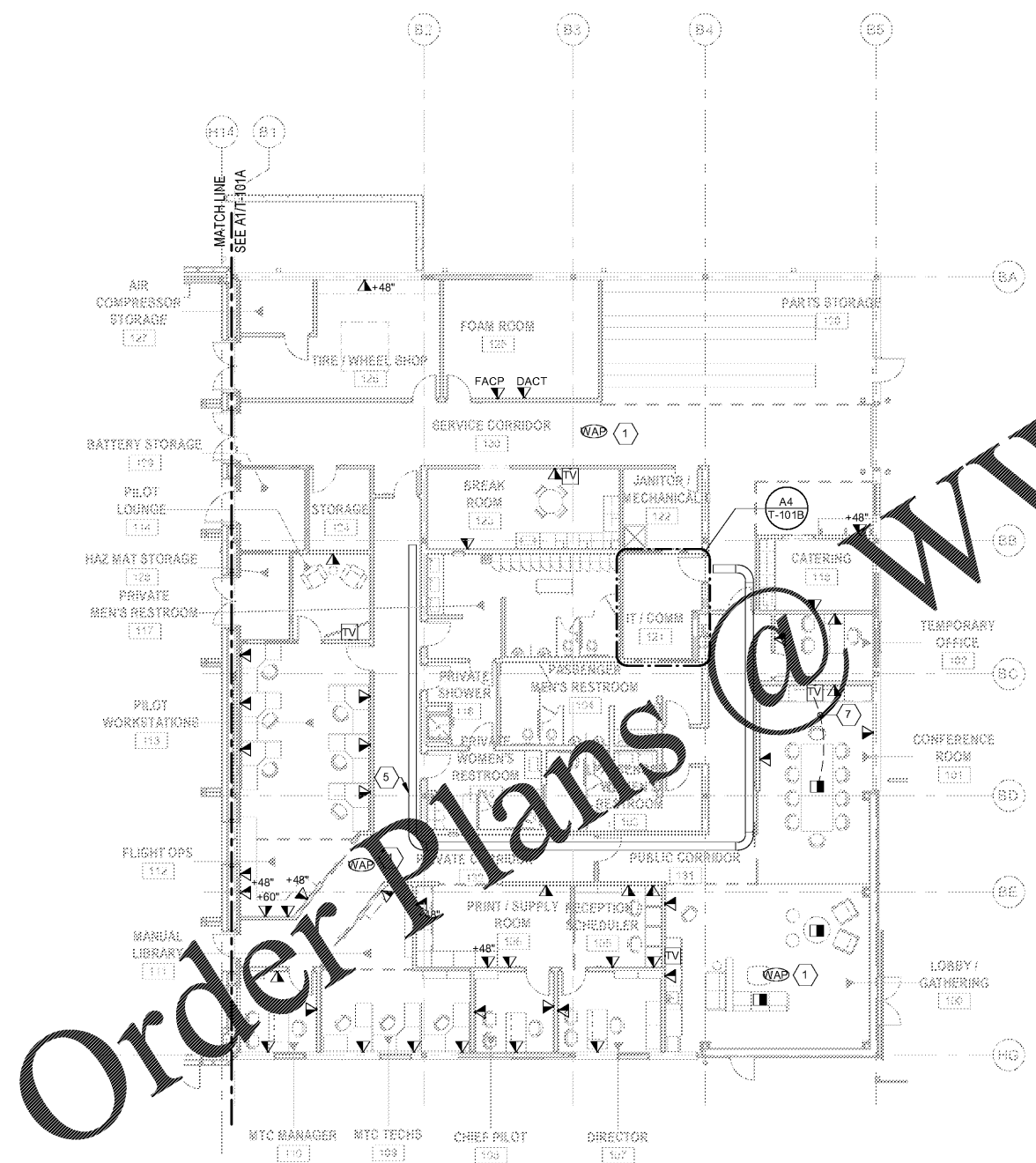
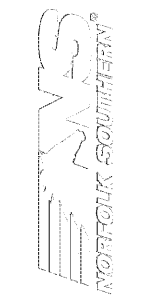
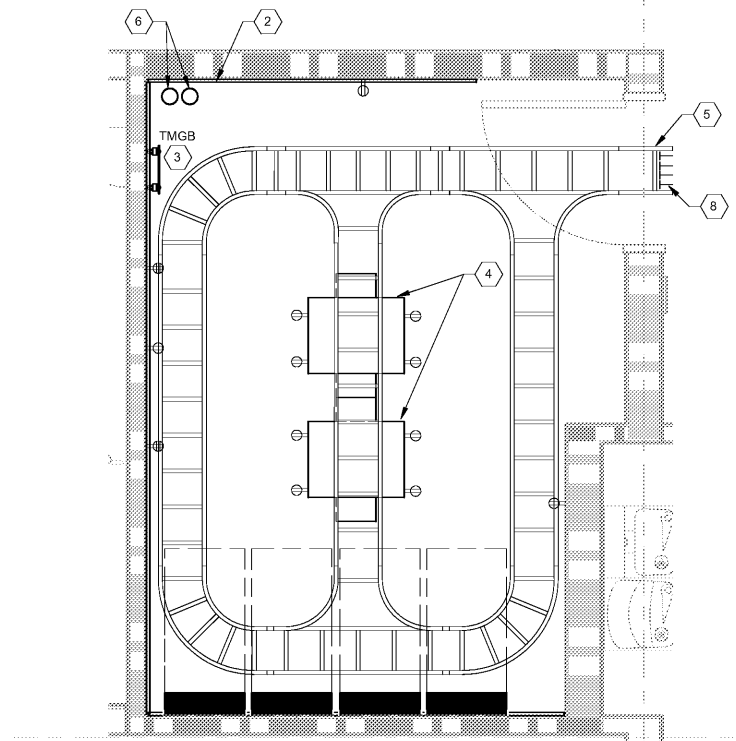


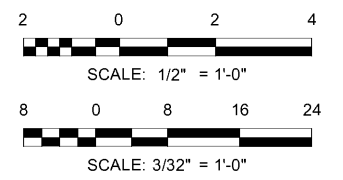
- SHEET NOTES:**
1. REFER TO T-001 FOR TELECOMMUNICATIONS GENERAL NOTES, ABBREVIATIONS & LEGEND.
 2. PROVIDE 1" C FOR EACH VOICE/DATA DROP TO CABLE TRAY. PROVIDE PULLSTRING IN ALL CONDUIT FOR FUTURE CABLING INSTALLATION BY OTHERS. SEE A2/T-502.
- KEYNOTES:**
1. WIRELESS ACCESS POINT. PROVIDE 4" SQUARE JUNCTION BOX MOUNTED TO BOTTOM OF ROOF STRUCTURE FOR MOUNTING OF OFOI WIRELESS ACCESS POINT. PROVIDE 1" C WITH PULLSTRING BACK TO NEAREST CABLE TRAY.
 2. 3/4" A/C GRADE FIRE RESISTANT TELECOMMUNICATIONS BACK BOARD. PROVIDE BACK BOARD COVERING ALL WALLS STARTING AT 1" AFF. EXTENDING VERTICALLY TO 8' - 6" AFF.
 3. TELECOMMUNICATIONS MAIN GROUND BAR. MOUNTED AT 12" AFF. REFER TO DETAIL A1/T-502.
 4. 19"W. ALUMINUM, TWO POST TELECOM EQUIPMENT RACK.
 5. 12"W X 4"H. ALUMINUM, BASKET STYLE CABLE TRAY. MOUNT CABLE TRAY 6" ABOVE CEILING. MAINTAIN 12" OF CLEARANCE ABOVE CABLE TRAY.
 6. (2) 4" C WITH PULLSTRING FOR TELECOM SERVICE. SEE ES-101 FOR CONTINUATION.
 7. PULLSTRING - 1 1/4" C.
 8. PROVIDE FOUR 4" CONDUIT SLEEVES BETWEEN TELECOMM ROOM CABLE TRAY AND CORRIDOR CABLE TRAY.



A1 TELECOMMUNICATIONS PLAN - OFFICE AREA
SCALE: 3/32" = 1'-0"



A4 ENLARGED TELECOMMUNICATIONS PLAN - IT/COMM ROOM 121
SCALE: 1/2" = 1'-0"



MARK	DESCRIPTION	DATE

DESIGNED BY: LCS	DRAWN BY: LCS	CHECKED BY: TEH	SUBMITTED BY: LCS	ISSUED FOR CONSTRUCTION: DC-MM-YY
---------------------	------------------	--------------------	----------------------	--------------------------------------

CORPORATE AIRCRAFT HANGAR FOR NORFOLK SOUTHERN CORPORATION
FULTON COUNTY AIRPORT - BROWN FIELD (FTY)
3822 AVIATION CIRCLE, SUITE 200
ATLANTA, GEORGIA 30336

TELECOMMUNICATIONS PLAN - OFFICE AREA

SHEET ID
T-101B