

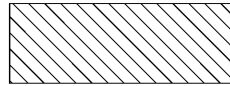
1

2

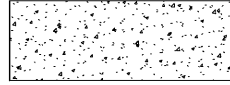
3

4

5



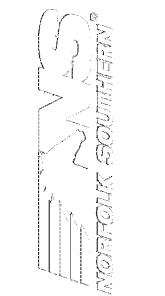
CLASS 1 DIVISION 2 AREA



CLASS 1 DIVISION 2 AREA, UP TO 18"

**SHEET NOTES:**

- 1. REFER TO E-001 & E-002 FOR ELECTRICAL GENERAL NOTES, ABBREVIATIONS & LEGEND.
- 2. ALL ELECTRICAL WORK IN HAZARDOUS AREAS SHALL BE IN ACCORDANCE WITH NATIONAL ELECTRICAL CODE ARTICLE 501 FOR CLASSIFICATION INDICATED.
- 3. BELOW FLOOR LEVEL: ANY PIT OR DEPRESSION BELOW THE LEVEL OF THE HANGAR FLOOR SHALL BE CLASSIFIED AS A CLASS 1, DIVISION 1 LOCATION THAT SHALL EXTEND UP TO SAID FLOOR LEVEL.
- 4. AREAS NOT CUT OFF OR VENTILATED: THE ENTIRE AREA OF THE HANGAR, INCLUDING ANY ADJACENT AND COMMUNICATING AREAS NOT SUITABLY CUT OFF FROM THE HANGAR, SHALL BE CLASSIFIED AS A CLASS 1 DIVISION 2 LOCATION UP TO A LEVEL OF 18" ABOVE FINISHED FLOOR.
- 5. VICINITY OF AIRCRAFT: THE AREA WITHIN 5 FEET HORIZONTALLY FROM AIRCRAFT POWER PLANT OR AIRCRAFT FUEL TANK SHALL BE CLASSIFIED AS A CLASS 1, DIVISION 2 LOCATION THAT SHALL EXTEND UPWARD FROM FLOOR TO A LEVEL 5 FEET ABOVE THE UPPER SURFACE OF THE WINGS AND OF ENGINE ENCLOSURES.
- 6. NON-CLASSIFIED METHODS OR DEVICES SHALL NOT BE LOCATED IN CLASS 1 DIVISION 1 OR CLASS 1 DIVISION 2 AREAS. NO OUTLET BOXES OR PACEWAY JOINTS EXCEPT THREADED AND SEALED TYPE MAY EXIST IN A CLASSIFIED LOCATION.



MARK	DESCRIPTION	DATE

DESIGNED BY:	DRAWN BY:	CHECKED BY:	SUBMITTED BY:	ISSUED FOR CONSTRUCTION:

DESIGNED BY: [ ]  
 DRAWN BY: [ ]  
 CHECKED BY: [ ]  
 SUBMITTED BY: [ ]  
 ISSUED FOR CONSTRUCTION: [ ]

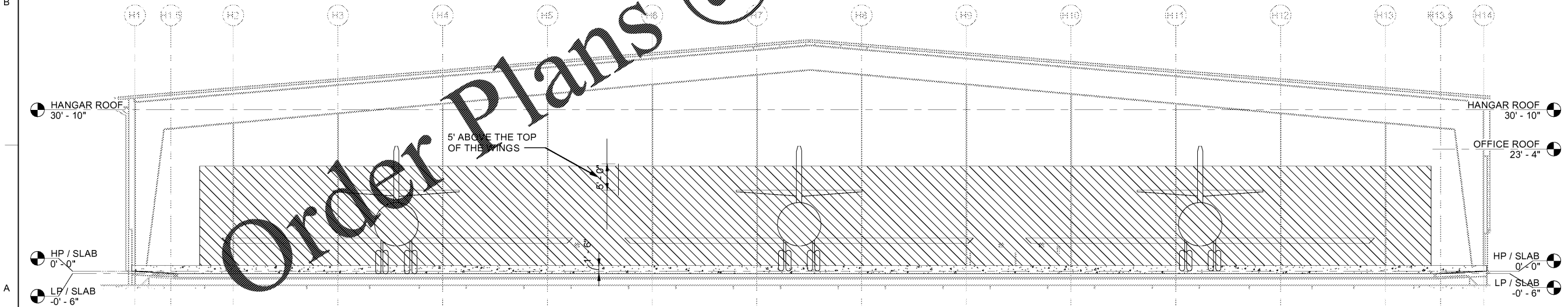
**POND**  
 3000 Peachtree Lane, Suite 200  
 Atlanta, Georgia 30309  
 Phone (770) 335-7740  
 Fax (770) 1195557

NORFOLK SOUTHERN CORP  
 1200 PEACHTREE STREET, NE  
 ATLANTA, GEORGIA 30309

CORPORATE AIRCRAFT HANGAR FOR NORFOLK SOUTHERN CORPORATION  
 FULTON COUNTY AIRPORT - BROWN FIELD (FTY)  
 3822 AVIATION CIRCLE, SUITE 200  
 ATLANTA, GEORGIA 30336

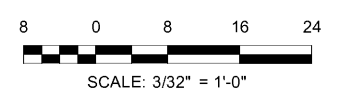
**HAZARDOUS CLASSIFICATION  
 ELEVATION PLAN**

SHEET ID  
**E-201**



Order Plans @ WWW.LDILine.com

**A1 HAZARDOUS CLASSIFICATION ELEVATION PLAN**  
 SCALE: 3/32" = 1'-0"



7/10/2020 11:56:02 AM BIM 360//1190557 - Pegasus/1190557\_Pegasus\_NS\_MEP\_FP\_v19.rvt