

1

2

3

4

5

SHEET NOTES:

- 1. REFER TO E-001 & E-002 FOR ELECTRICAL GENERAL NOTES, ABBREVIATIONS & LEGEND.

KEYNOTES:

- 1. ELECTRICAL MAIN GROUND BAR. SEE C3/E-502.



--	--

MARK	DESCRIPTION	DATE

DESIGNED BY: TCS	DRAWN BY: TCS
CHECKED BY: TEH	SUBMITTED BY: ERA
ISSUED FOR CONSTRUCTION: DC-MM-YYYY	

NORFOLK SOUTHERN
 1200 PEACHTREE STREET, NE
 ATLANTA, GEORGIA 30309
POND
 3000 Peachtree Lane, Suite 200
 Atlanta, Georgia 30328
 Phone: (770) 335-7740
 Job No. 1190557

CORPORATE AIRCRAFT HANGAR FOR NORFOLK SOUTHERN CORPORATION
 FULTON COUNTY AIRPORT - BROWN FIELD (F71)
 3627 AVIATION CIRCLE, SUITE 200
 ATLANTA, GEORGIA 30336
HANGAR BAY GROUNDING PLAN

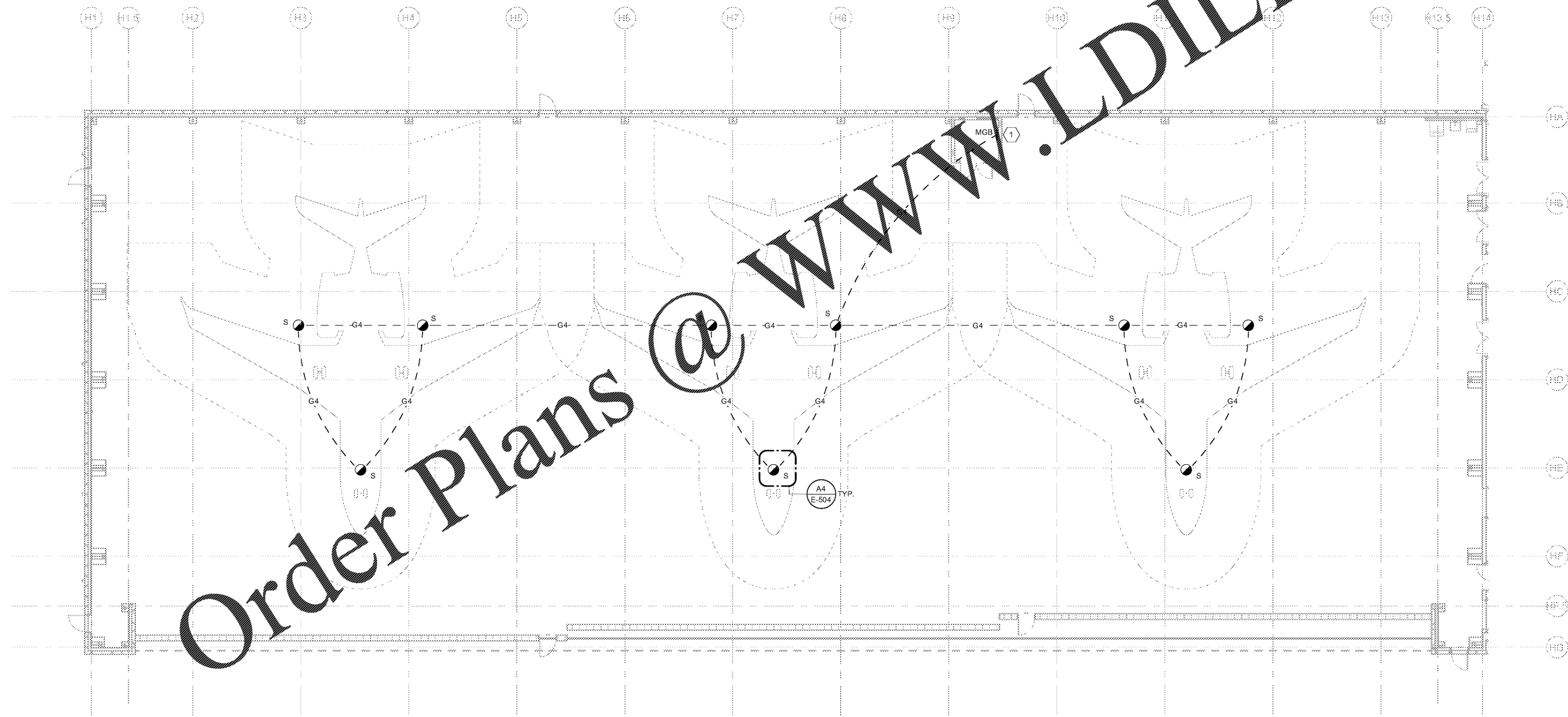
SHEET ID
E-141

D

C

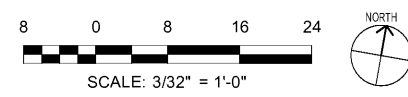
B

A



Order Plans @ WWW.LDILine.com

A1 HANGAR BAY GROUNDING PLAN
 SCALE: 3/32" = 1'-0"



7/10/2020 11:55:59 AM BIM 360//1190557 - Pegasus/1190557_Pegasus_NS_MEP_FP_v19.rvt