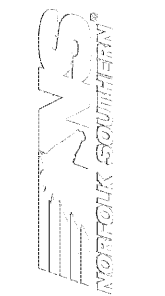
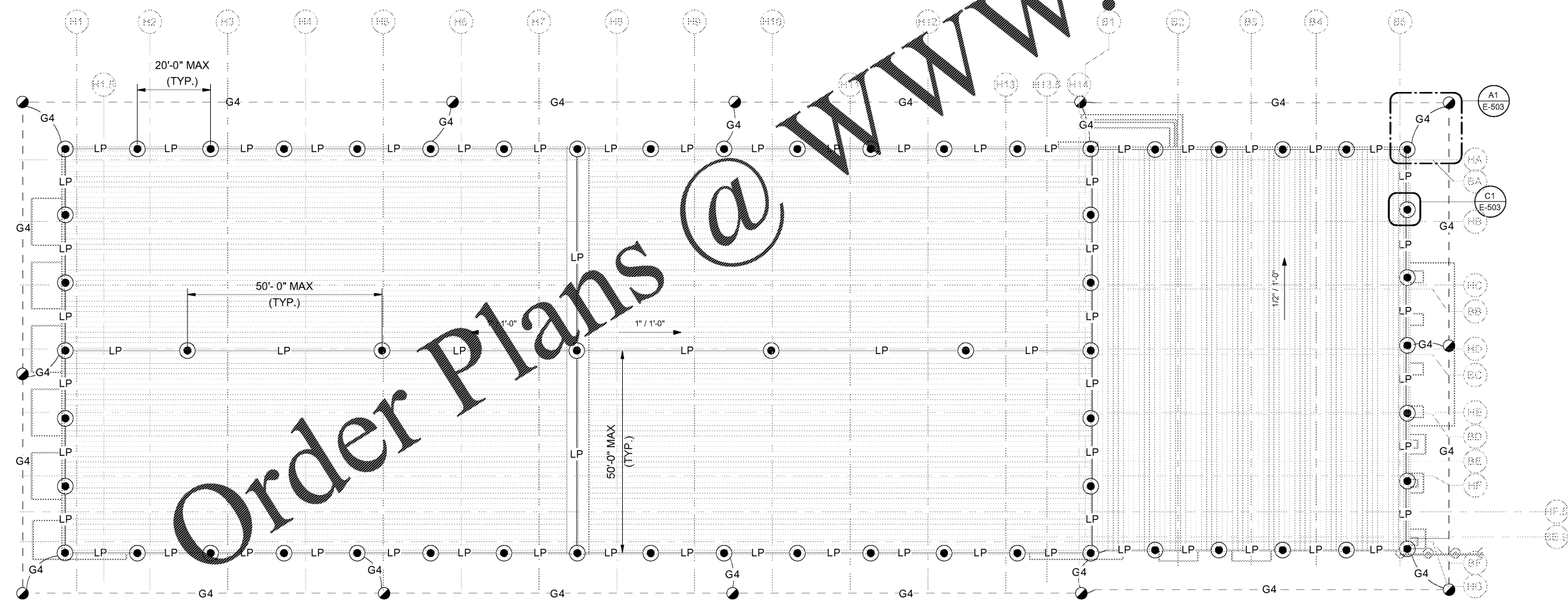


- SHEET NOTES:**
1. REFER TO E-001 & E-002 FOR ELECTRICAL GENERAL NOTES, ABBREVIATIONS & LEGEND.
 2. THE LIGHTNING PROTECTION SYSTEM SHALL BE PROVIDED AND INSTALLED BY A LPI CERTIFIED INSTALLER IN ACCORDANCE WITH NFPA 780 AND ALL APPLICABLE LOCAL AND STATE CODES AND REQUIREMENTS.

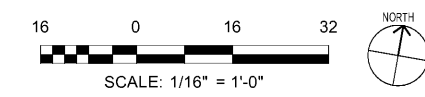


WWW.LDILine.com



Order Plans @

A1 LIGHTNING PROTECTION PLAN
SCALE: 1/16" = 1'-0"



MARK	DESCRIPTION	DATE

DESIGNED BY: DS	CHECKED BY: TEH	ISSUED FOR CONSTRUCTION: DC-MM-YYYY
DRAWN BY: TGS	DATE: 	
<small>OWNER'S REPRESENTATIVE NORFOLK SOUTHERN BUSINESS SERVICES TYPE OF CONSTRUCTION TYPE OF WORK/REPAIR *SEE AREA FOR CLEARANCE DIMENSIONS WITH THE HANGAR AND THE SITE</small>		
<small>NORFOLK SOUTHERN CORP 1200 PEACHTREE STREET, NE ATLANTA, GEORGIA 30309 POND 3000 Peachtree Lane, Suite 200 Atlanta, Georgia 30328 Phone (770) 335-7740 Fax (770) 335-7740 JOB NO. 1185517</small>		

CORPORATE AIRCRAFT HANGAR FOR NORFOLK SOUTHERN CORPORATION
FULTON COUNTY AIRPORT - BROWN FIELD (FTY)
3627 AVIATION CIRCLE, SUITE 200
ATLANTA, GEORGIA 30336

LIGHTNING PROTECTION PLAN

SHEET ID
E-131