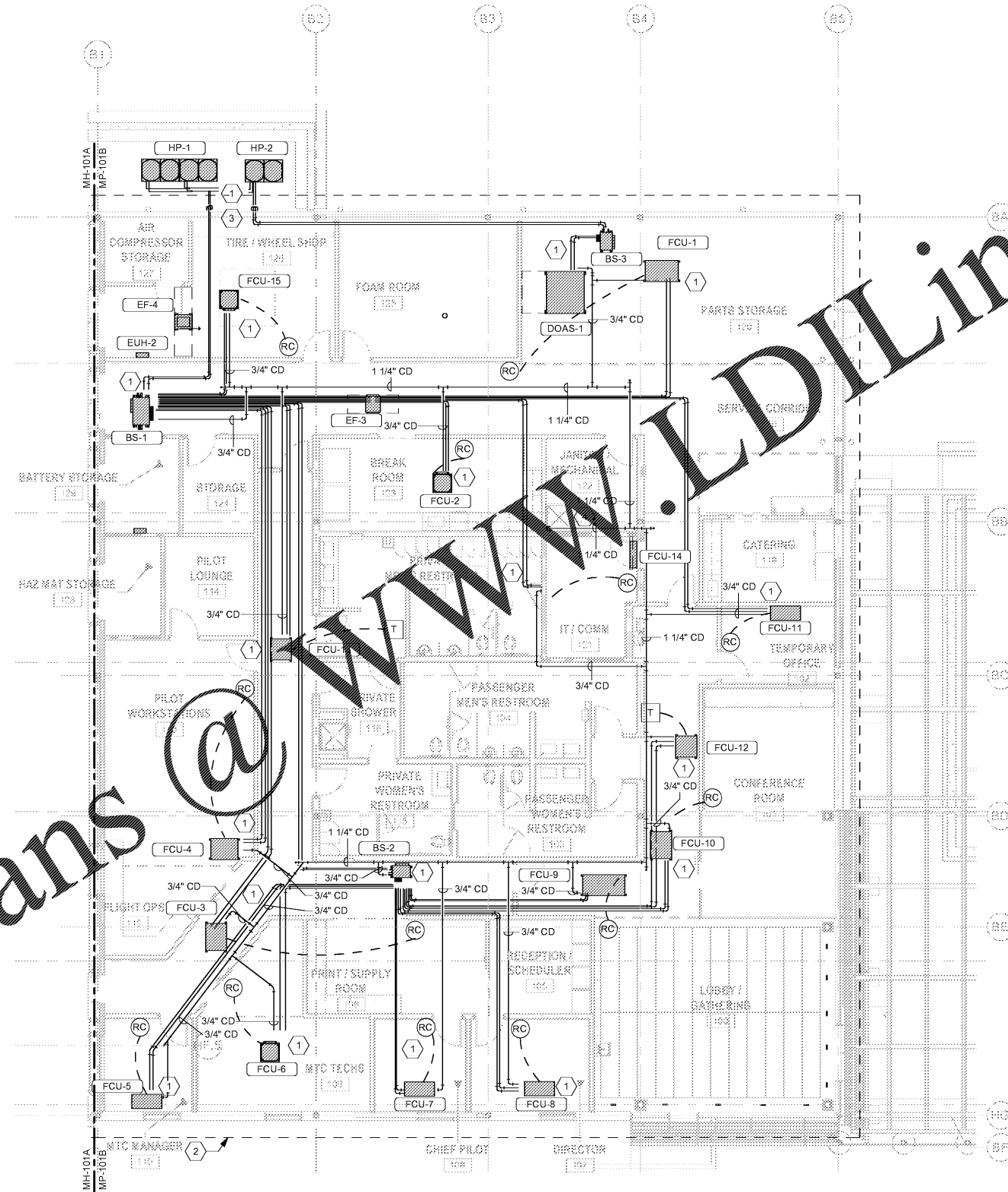


**SHEET NOTES:**  
 1. REFER TO M-001 FOR MECHANICAL GENERAL NOTES AND DESIGN CRITERIA.  
 2. REFER TO M-002 FOR MECHANICAL ABBREVIATIONS AND LEGENDS.

**KEYNOTES**

1. SIZE REFRIGERANT LINES PER MANUFACTURER'S RECOMMENDATION.  
 2. SOFFIT OVER-HANG SEE ARCHITECTURAL DRAWINGS FOR DETAIL.  
 3. PROVIDE ALUMINUM JACKET ON ALL EXTERIOR REFRIGERANT PIPING. PROVIDE PIPE SUPPORTS AS REQUIRED.

1-1/2" CONDENSATE DRAIN SHALL ROUTE DOWN WALL TO MOP SINK IN JANITOR/MECHANICAL.



Order Plans @ [www.LDILine.com](http://www.LDILine.com)

MARK	DESCRIPTION	DATE

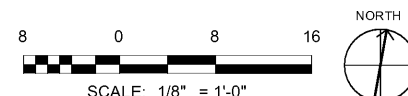
DESIGNED BY:  
 DRAWN BY:  
 CHECKED BY:  
 SUBMITTED BY:  
 ISSUED FOR CONSTRUCTION:  
 15-JUL-2020

**POND**  
 2000 Peachtree Lane, Suite 200  
 Atlanta, Georgia 30309  
 Phone (770) 335-7740  
 Fax (770) 335-7740  
 Job No. 11955517

CORPORATE AIRCRAFT HANGAR FOR NORFOLK SOUTHERN CORPORATION  
 FULTON COUNTY AIRPORT - BROWN FIELD (FTY)  
 382 AVIATION CIRCLE, SUITE 200  
 ATLANTA, GEORGIA 30335

**FIRST FLOOR PIPING - OFFICE**

**A2** FIRST FLOOR PIPING PLAN - OFFICE  
 SCALE: 1/8" = 1'-0"



SHEET ID  
**MP101B**

7/10/2020 11:40:27 AM BIM 360//1190557 - Pegasus/1190557\_Pegasus\_NS\_MEP\_FP\_v19.rvt